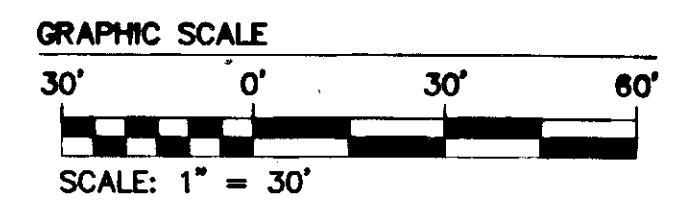


120018358

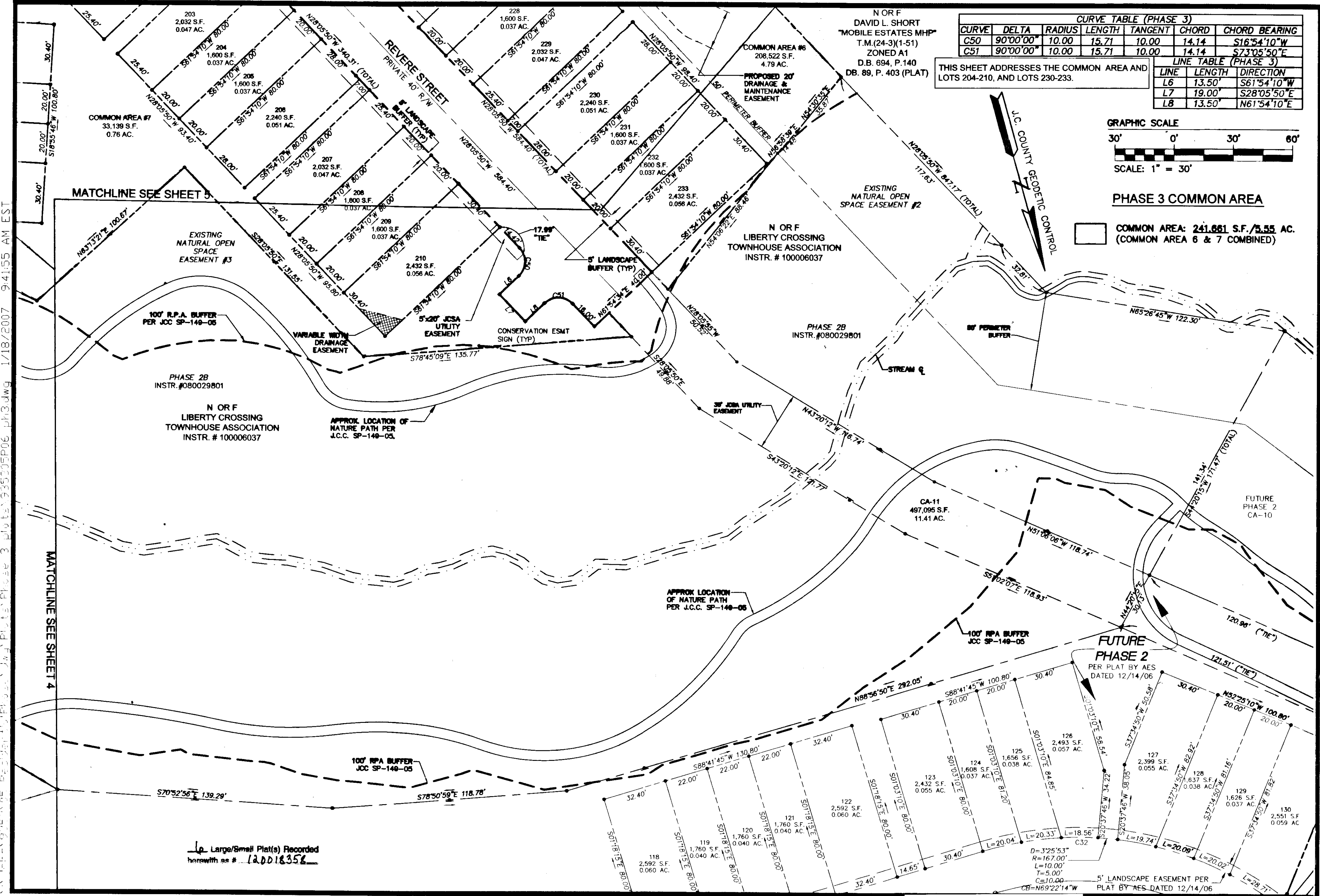
CURVE TABLE (PHASE 3)						
CURVE	DELTA	RADIUS	LENGTH	TANGENT	CHORD	CHORD BEARING
C50	90°00'00"	10.00	15.71	10.00	14.14	S16°54'10"W
C51	90°00'00"	10.00	15.71	10.00	14.14	S73°05'50"E

LINE TABLE (PHASE 3)		
LINE	LENGTH	DIRECTION
L6	13.50'	S61°54'10"W
L7	19.00'	S28°05'50"E
L8	13.50'	N61°54'10"E

THIS SHEET ADDRESSES THE COMMON AREA AND LOTS 204-210, AND LOTS 230-233.



PHASE 3 COMMON AREA
 COMMON AREA: 241,881 S.F./5.55 AC. (COMMON AREA 6 & 7 COMBINED)

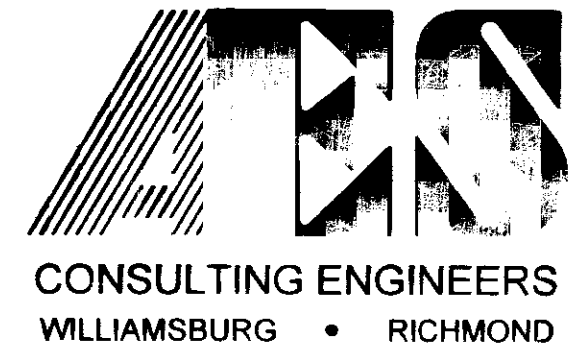


MATCHLINE SEE SHEET 5

MATCHLINE SEE SHEET 4

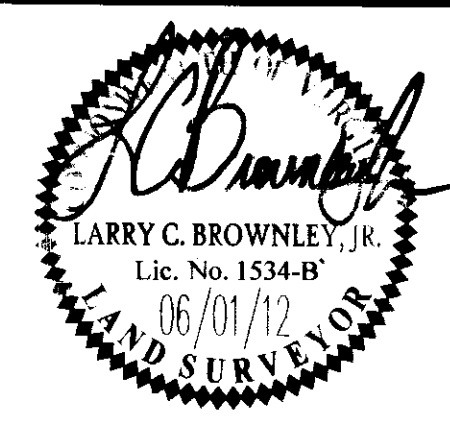
Large/Small Plat(s) Recorded herewith as # 120018358

1/18/2007 9:41:55 AM EST



5248 Olde Towne Road, Suite 1
 Williamsburg, Virginia 23188
 (757) 253-0040
 Fax (757) 220-8994

PLAT OF SUBDIVISION
PHASE 3
LIBERTY CROSSING
 LOTS 187 THRU 233
 STONEHOUSE DISTRICT JAMES CITY COUNTY VIRGINIA



City of Williamsburg & County of James City
 Circuit Court: This PLAT was recorded on
 5 September 2012
 at 9:52 AM/PM, PG
 Document # 120018358
 BESSY B. WOOLIDGE, CLERK
 Dep. Clerk

No.	DATE	REVISION / COMMENT / NOTE	BY
2	07-12-11	REVISIONS PER LOT CHANGES BY CLIENT	LCB
1	5-24-07	REVISIONS PER JAMES CITY COUNTY DATED 3-26-07	MEG

Designed	JAG	Drawn	MEG
Scale	1" = 30'	Date	1/22/07
Project No.		9353-05	
Drawing No.		6 OF 6	