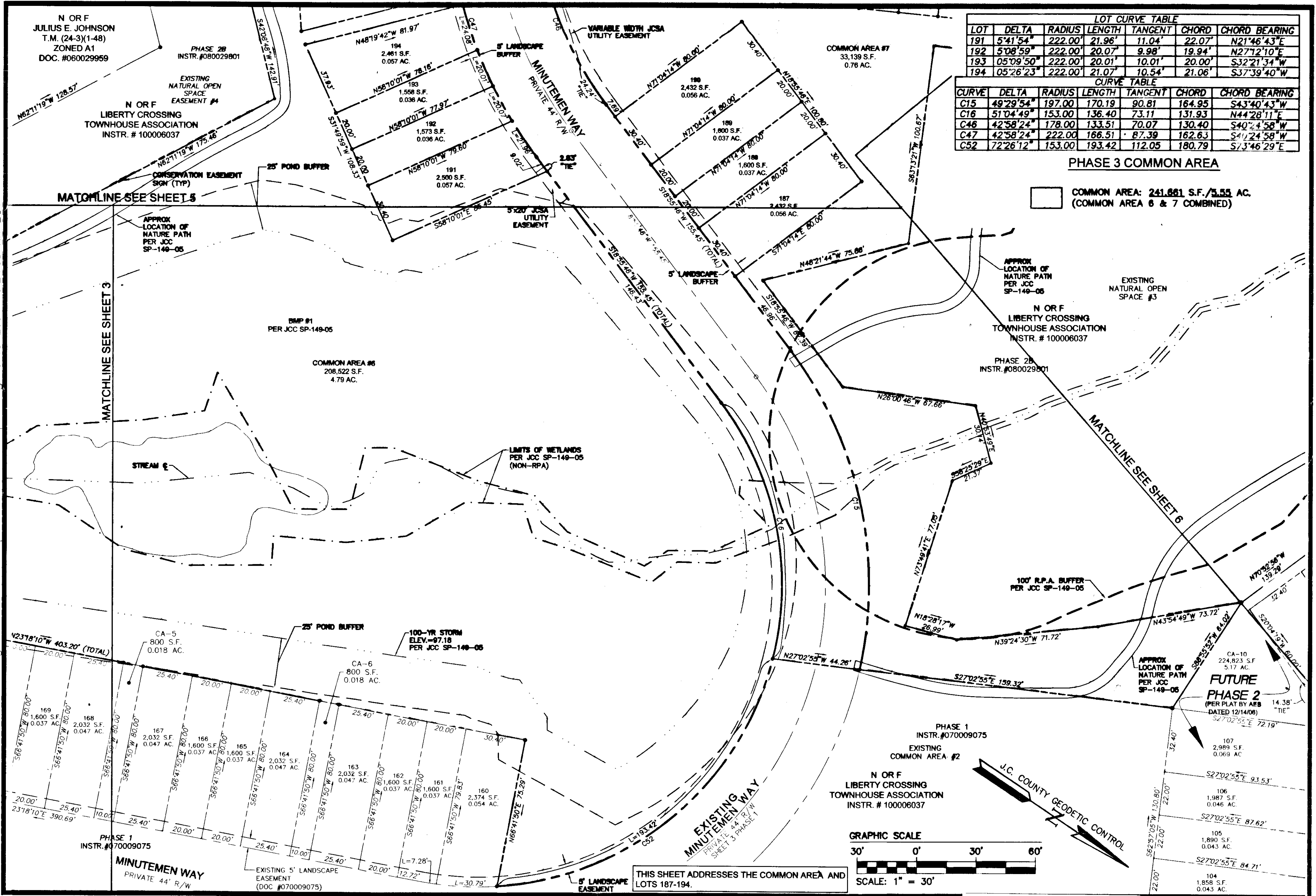


120018358



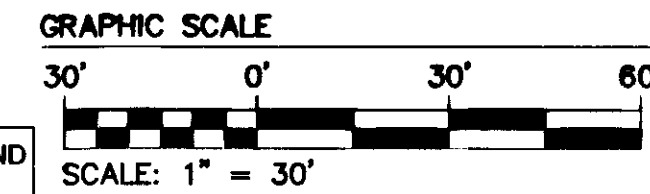
LOT CURVE TABLE						
LOT	DELTA	RADIUS	LENGTH	TANGENT	CHORD	CHORD BEARING
191	5°41'54"	222.00'	21.96'	11.04'	22.07'	N21°46'43"E
192	5°08'59"	222.00'	20.07'	9.98'	19.94'	N27°12'10"E
193	05°09'50"	222.00'	20.01'	10.01'	20.00'	S32°21'34"W
194	05°26'23"	222.00'	21.07'	10.54'	21.06'	S37°39'40"W

CURVE TABLE						
CURVE	DELTA	RADIUS	LENGTH	TANGENT	CHORD	CHORD BEARING
C15	49°29'54"	197.00'	170.19'	90.81'	164.95'	S43°40'43"E
C16	51°04'49"	153.00'	136.40'	73.11'	131.93'	N44°28'11"E
C46	42°58'24"	178.00'	133.51'	70.07'	130.40'	S40°24'58"W
C47	42°58'24"	222.00'	166.51'	87.39'	162.63'	S41°24'58"W
C52	72°26'12"	153.00'	193.42'	112.05'	180.79'	S13°46'29"E

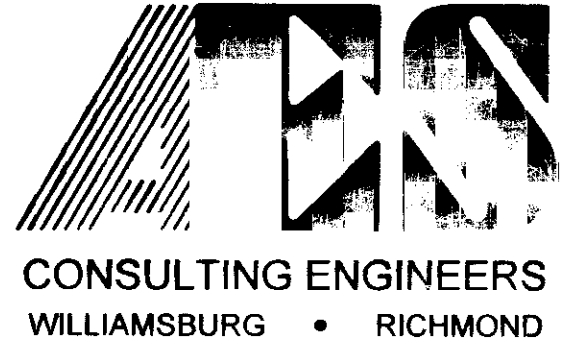
PHASE 3 COMMON AREA

COMMON AREA: 241,661 S.F./5.55 AC. (COMMON AREA 6 & 7 COMBINED)



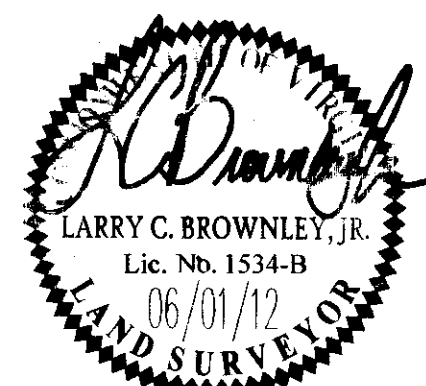
THIS SHEET ADDRESSES THE COMMON AREA AND LOTS 187-194.

S:\Info\0202\05\_Plan\Info\Phase\dwg\Plots\Phase 3 Plots\935305P04-ph3.dwg 1/18/2007 9:24:08 AM EST



5248 Olde Towne Road, Suite 1  
Williamsburg, Virginia 23188  
(757) 253-0040  
Fax (757) 220-8994

PLAT OF SUBDIVISION  
**PHASE 3**  
**LIBERTY CROSSING**  
LOTS  
187 THRU 233  
STONEHOUSE DISTRICT JAMES CITY COUNTY VIRGINIA



City of Williamsburg & County of James City Circuit Court: This PLAT was recorded on 5 September 2012 at 8:54 AM PM PG Document # 120018358 BETSY B. WOOLRIDGE, CLERK B. Woolridge, Dep. Clerk			
No.	DATE	REVISION / COMMENT / NOTE	BY
2	6-01-12	REVISIONS PER LOT CHANGED BY CLIENT	LCB
1	5-24-07	REVISIONS PER JAMES CITY COUNTY DATED 3-26-07	MEG

Designed	Drawn
JAG	MEG
Scale	Date
1" = 30'	1/25/07
Project No.	
9353-05	
Drawing No.	
4 OF 6	