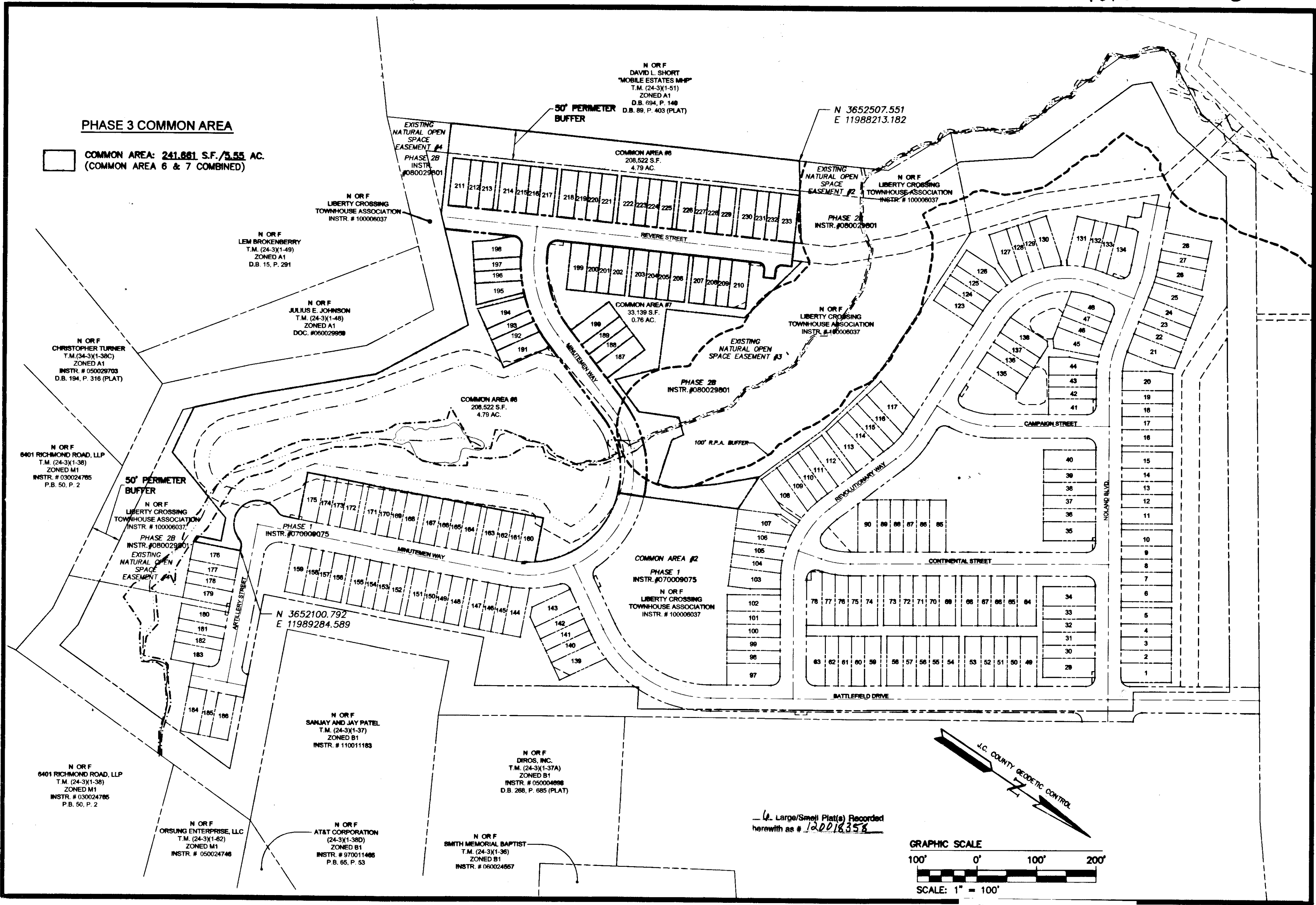


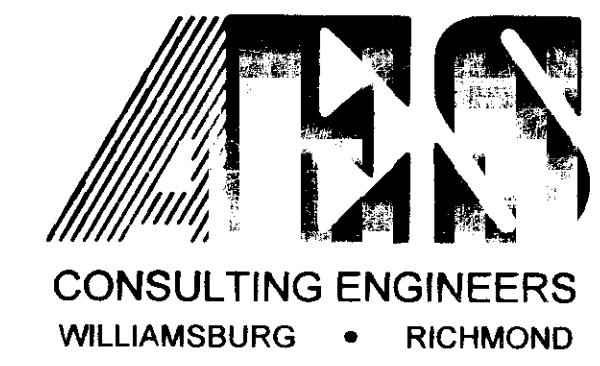
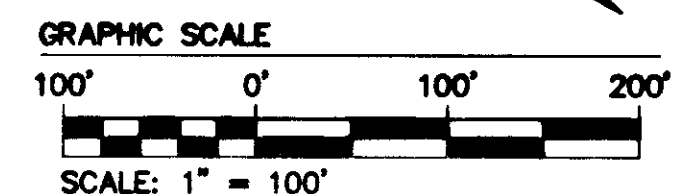
S:\Jobs\9353\05-Residential\Phase 3\Plat\9353\9353-1-17-2007 2:17:59 PM EST



PHASE 3 COMMON AREA
COMMON AREA: 241,661 S.F./5.55 AC.
(COMMON AREA 6 & 7 COMBINED)

EXISTING NATURAL OPEN SPACE EASEMENT #1 PHASE 2B INSTR.#080029801
50' PERIMETER BUFFER
N OR F DAVID L. SHORT "MOBILE ESTATES MVP" T.M. (24-3)(1-51) ZONED A1 D.B. 894, P. 148 D.B. 89, P. 403 (PLAT)
N OR F LIBERTY CROSSING TOWNSHIP ASSOCIATION INSTR.# 100006037
N OR F LEM BROKENBERRY T.M. (24-3)(1-49) ZONED A1 D.B. 15, P. 291
N OR F JULIUS E. JOHNSON T.M. (24-3)(1-48) ZONED A1 DOC. #060029898
N OR F CHRISTOPHER TURNER T.M. (24-3)(1-38C) ZONED A1 INSTR.# 050029703 D.B. 194, P. 316 (PLAT)
N OR F 6401 RICHMOND ROAD, LLP T.M. (24-3)(1-38) ZONED M1 INSTR.# 030024785 P.B. 50, P. 2
N OR F LIBERTY CROSSING TOWNSHIP ASSOCIATION INSTR.# 100006037
50' PERIMETER BUFFER
N OR F PHASE 2B INSTR.#080029801
EXISTING NATURAL OPEN SPACE EASEMENT #2
N OR F LIBERTY CROSSING TOWNSHIP ASSOCIATION INSTR.# 100006037
N OR F COMMON AREA #6 208,522 S.F. 4.79 AC.
100' R.P.A. BUFFER
N OR F COMMON AREA #7 33,139 S.F. 0.76 AC.
N OR F PHASE 2B INSTR.#080029801
EXISTING NATURAL OPEN SPACE EASEMENT #3
N OR F COMMON AREA #8 208,522 S.F. 4.79 AC.
N OR F PHASE 1 INSTR.#070009075
N OR F COMMON AREA #2 PHASE 1 INSTR.#070009075
N OR F LIBERTY CROSSING TOWNSHIP ASSOCIATION INSTR.# 100006037
N OR F SANJAY AND JAY PATEL T.M. (24-3)(1-37) ZONED B1 INSTR.# 110011183
N OR F DIROS, INC. T.M. (24-3)(1-37A) ZONED B1 INSTR.# 050004898 D.B. 268, P. 685 (PLAT)
N OR F ORSUNG ENTERPRISE, LLC T.M. (24-3)(1-62) ZONED M1 INSTR.# 050024748
N OR F AT&T CORPORATION (24-3)(1-38D) ZONED B1 INSTR.# 970011466 P.B. 65, P. 53
N OR F SMITH MEMORIAL BAPTIST T.M. (24-3)(1-36) ZONED B1 INSTR.# 060024657

(L. Large/Small Plat(s) Recorded herewith as # 120018358



5248 Olde Towne Road, Suite 3
Williamsburg, Virginia 23188
(757) 253-0040
Fax (757) 220-8994

PLAT OF SUBDIVISION
PHASE 3
LIBERTY CROSSING
OVERALL SITE
STONEHOUSE DISTRICT JAMES CITY COUNTY VIRGINIA



No.	DATE	REVISION / COMMENT / NOTE	BY
2	6-01-12	REVISIONS PER LOT CHANGES BY VIDEY	LCB
1	5-24-07	REVISIONS PER JAMES CITY COUNTY DATED 3-26-07	MEG

City of Williamsburg & County of James City
Circuit Court: This PLAT was recorded on
5 September 2012
at 8:51 AM/PM, PG. 1
Document # 120018358
BETSY B. WOOLRIDGE, CLERK
William H. Galt, Jr., Dep. Clerk

Designed	Drawn
JAG	MEG
Scale 1"=100'	Date 1/25/08
Project No. 9353-05	
Drawing No. 2 OF 6	