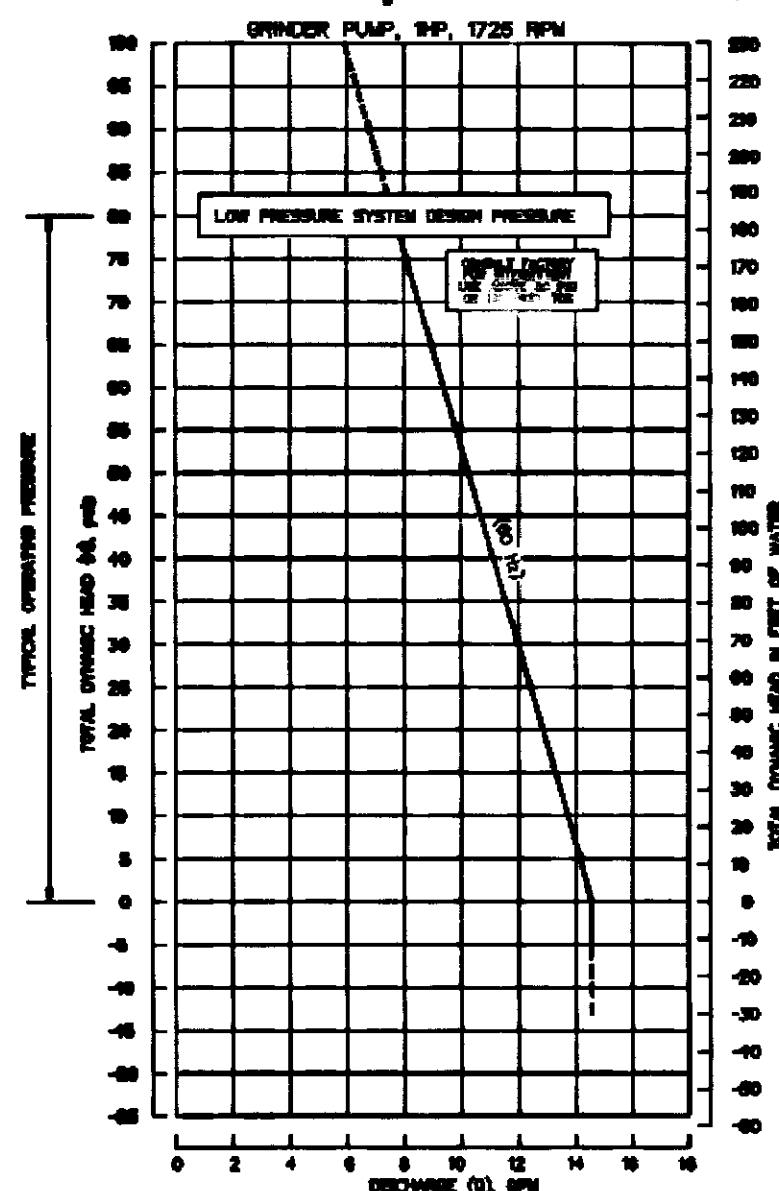


120018062

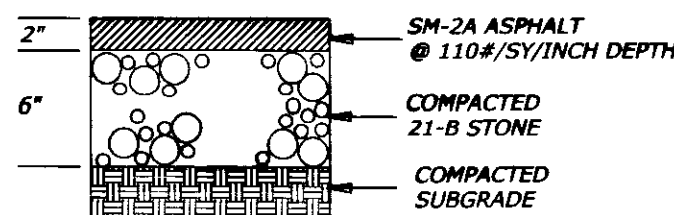
E-One SPD Pump Performance Curve



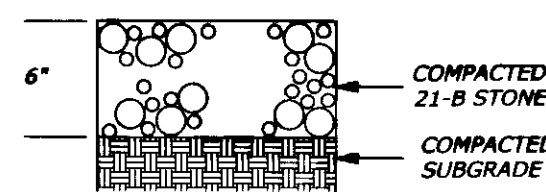
THE FOLLOWING STANDARD DETAILS SHALL BE INCORPORATED INTO THE CONSTRUCTION DOCUMENTS BY REFERENCE:

Utility Detail Reference Matrix

INSTALLATION	STANDARDS	DETAIL NUMBER
S.S. CLEANOUT	HRPDC	SS_11
S.S. SERVICE CONNECTION	HRPDC	SS_14
FORCE MAIN CONNECTION	HRPDC	SS_17
SEWAGE PUMP STATION	JCSA	GP-1
WATER SERVICE INSTALLATION	HRPDC	WD_01
WATER SERVICE INSTALLATION	HRPDC	WD_02
WATER METER BOX	HRPDC	WD_03



ASPHALT DRIVE SECTION



GRAVEL DRIVE SECTION

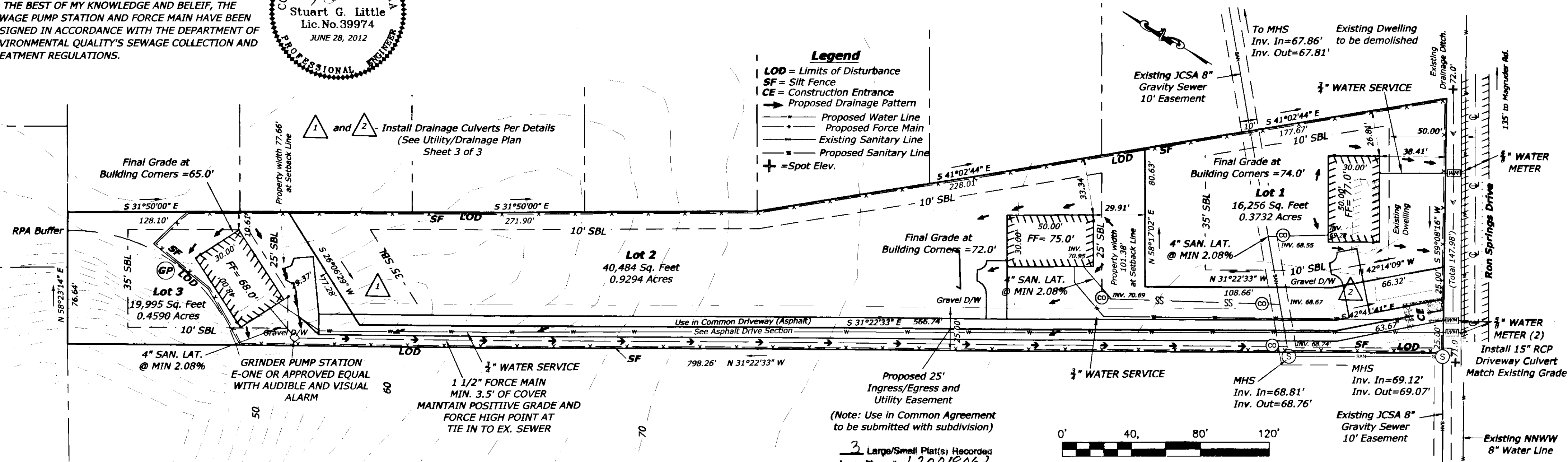
GENERAL EROSION AND SEDIMENT CONTROL NOTES

- ES-1: Unless otherwise indicated, construct and maintain all vegetative and structural erosion and sediment control practices according to minimum standards and specifications of the Virginia Erosion and Sediment Control Handbook and Virginia Regulations VR 625-02-00 Erosion and Sediment Control Regulations.
- ES-2: Local authorities having jurisdiction will make a continuing review and evaluation of the methods and effectiveness of the e.c. plan.
- ES-3: Place all erosion and sediment control measures prior to or as the first step in clearing, grading, or land disturbance.
- ES-4: Maintain a copy of the approved erosion and sediment control plan on the site at all times.
- ES-5: Prior to commencing land-disturbing activities in areas other than indicated on these plans (including, but not limited to, offsite borrow or waste area), submit a supplementary erosion control plan to the Architect/Engineer for review and acceptance.
- ES-6: Provide additional erosion control measures necessary to prevent erosion and sedimentation as determined by the local authority having jurisdiction.
- ES-7: All disturbed areas shall drain to approved sediment control measures at all times during land-disturbing activities and during site development.
- ES-8: During dewatering operations, pump water into an approved filtering device.
- ES-9: Inspect all erosion control measures daily and after each runoff-producing rainfall event. Make any necessary repairs or cleanup to maintain the effectiveness of the erosion control devices immediately.
- ES-10: Contact James City County Engineering and Resource Protection Division inspector at 757-253-6670 with 48 hours notice to arrange for a pre-construction conference.
- ES-11: Driveway surface is to be constructed flush with surrounding grades.

Residential Grinder Pump Calculations

Static Head = 13'
 Friction Head (2" Force Main) = 13'
 Total Dynamic Head = 26'
 Pump Rate per E-One Curve = 13 GPM
 Force Main Velocity = 2.4 FPS

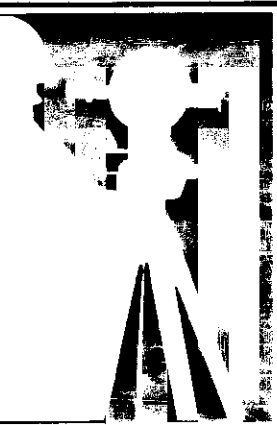
TO THE BEST OF MY KNOWLEDGE AND BELIEF, THE SEWAGE PUMP STATION AND FORCE MAIN HAVE BEEN DESIGNED IN ACCORDANCE WITH THE DEPARTMENT OF ENVIRONMENTAL QUALITY'S SEWAGE COLLECTION AND TREATMENT REGULATIONS.



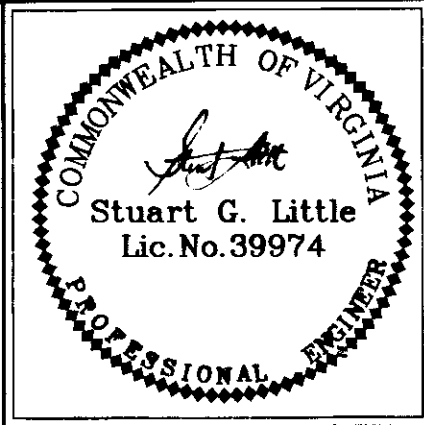
- Legend**
- LOD = Limits of Disturbance
 - SF = Silt Fence
 - CE = Construction Entrance
 - Proposed Drainage Pattern
 - Proposed Water Line
 - Proposed Force Main
 - Existing Sanitary Line
 - Proposed Sanitary Line
 - + = Spot Elev.



City of Williamsburg & County of James City
 Circuit Court: This PLAT was recorded on
 30 August 2012
 at 8:55 AM/PM, PG
 Document # 120018062
 BETSY B. WOOLRIDGE, CLERK
 (804) 376-2331 (804) 966-2820
 www.gardysurveying.com
 P.O. Box 15 New Kent, VA 23124



Utility/Site Plan
Subdivision Plat - Lots 1-3
 A Resubdivision of Parcel 1
 Sadie Lee Taylor Property
 122 Ron Springs Drive
 GPIN No.: 591-020-0018



MAG. DISTRICT:	COUNTY: James City
DATE: May 16, 2012	SCALE: 1"=40'
SHEET: 2 OF 3	J.N.: 11-0091
DRAWN BY: RIL	CHECKED BY: DRG
REV.	DATE
Per County Comments	July 10, 2012
Per County Comments	August 2, 2012