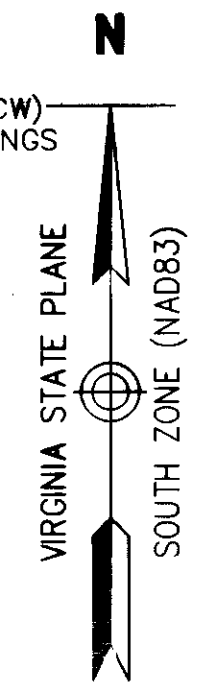


N/F
XANTERRA KINGSMILL, LLC.
PARCEL R-2
PART OF TAX PARCEL
5030100001 AND
5040100001
ZONED R-4
REF. DOC. NO. 100015441 OF RECORD
REF. INSTR. NO. 100014944 OF RECORD

00°00'29" (CCW)
RECORD BEARINGS



CENTERLINE OF
10' CITY OF NEWPORT NEWS
WATERLINE EASEMENT

N/F
CONFERENCE CENTER
CONDOMINIUMS UNIT
OWNERS ASSOCIATION
TAX MAP NO. 5041300001
ZONED R-4
REF. P.B. 48 PGS. 17-57 OF RECORD
PROPERTY IS IMPROVED
IMPROVEMENTS NOT SHOWN

N/F
XANTERRA KINGSMILL, LLC.
PARCEL R-2
PART OF TAX PARCEL
5030100001 AND
5040100001
ZONED R-4
REF. DOC. NO. 100015441 OF RECORD
REF. INSTR. NO. 100014944 OF RECORD

CURVE TABLE						
CURVE	LENGTH	RADIUS	TANGENT	CHORD	CHORD BEARING	DELTA
C1	268.57'	139.00'	201.13'	228.70'	S77°09'59"E	110°42'16"
C2	129.11'	311.00'	65.50'	128.18'	S59°22'27"E	23°47'08"
C3	5.35'	80.30'	2.68'	5.35'	S06°59'31"E	3°48'58"
C4	69.32'	95.45'	36.27'	67.81'	S25°53'13"E	41°36'39"
C5	45.21'	80.30'	23.22'	44.62'	N25°01'47"W	32°15'34"
C6	64.03'	1970.00'	32.02'	64.03'	N47°37'23"W	1°51'44"
C7	25.75'	35.45'	13.47'	25.18'	N25°53'13"W	41°36'39"
C8	88.34'	140.30'	45.69'	86.89'	N23°07'18"W	36°04'32"

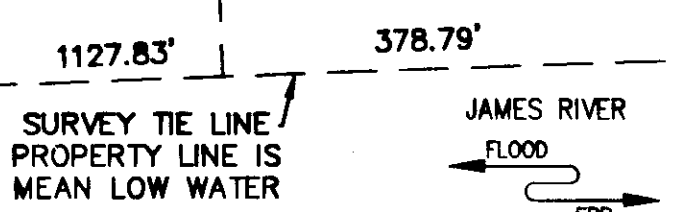
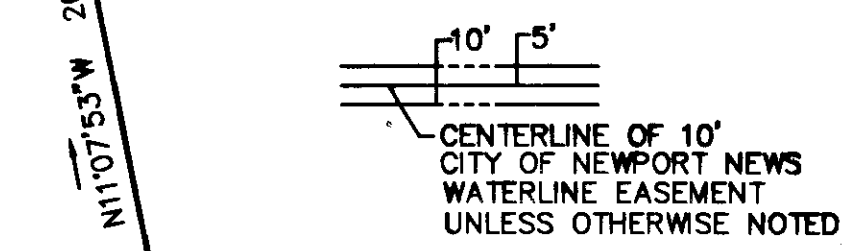
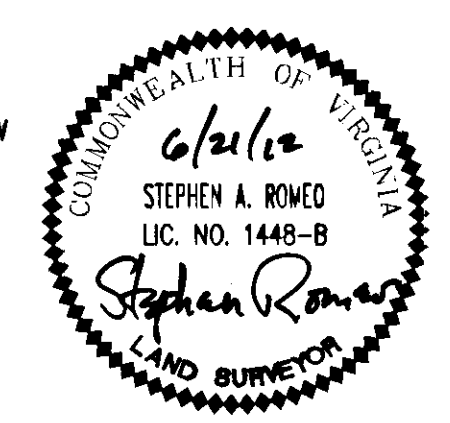
WATER MAIN EASEMENT LINE TABLE		
LINE	LENGTH	BEARING
E1	75.62'	S71°49'42"W
E2	76.05'	S64°53'10"W
E3	18.04'	S60°51'16"W
E4	17.99'	S59°40'03"W
E5	17.94'	S59°02'51"W
E6	17.94'	S63°25'33"W
E7	17.99'	S62°48'21"W
E8	18.03'	S61°11'17"W
E41	16.79'	S33°54'28"E
E42	24.84'	N34°39'15"W

WATER MAIN EASEMENT CURVE TABLE						
CURVE	LENGTH	RADIUS	DELTA	TANGENT	BEARING	CHORD
EC1	40.71'	336.00'	6°56'32"	20.38'	S68°21'26"W	40.69'
EC2	3.52'	640.64'	0°18'53"	1.76'	S56°14'59"W	3.52'
EC3	8.35'	640.64'	0°44'47"	4.17'	S55°43'09"W	8.35'
EC4	237.41'	640.64'	21°13'58"	120.08'	S44°43'46"W	236.05'
EC5	7.02'	640.64'	0°37'39"	3.51'	S33°47'58"W	7.02'

**PLAT OF
WATER MAIN EASEMENT
PROJECTING (ON/ACROSS) LAND OF
XANTERRA KINGSMILL, LLC.
TO BE CONVEYED TO
CITY OF NEWPORT NEWS
BY
CURRENT OWNER
SHEET 1 OF 2**

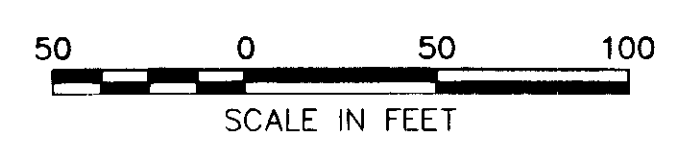
ROBERTS DISTRICT, JAMES CITY COUNTY, VIRGINIA
DATE: 6/21/12 SCALE: 1"=50'

THIS PLAT IS BASED UPON 2010 FIELD SURVEY BY LANDMARK DESIGN GROUP, NOW VANASSE HANGEN BRUSTLIN, INC. AND TO THE BEST OF MY KNOWLEDGE AND BELIEF COMPLIES WITH THE APPLICABLE REGULATIONS ESTABLISHED BY THE COMMONWEALTH OF VIRGINIA BOARD FOR ARCHITECTS, ENGINEERS, LAND SURVEYORS, CERTIFIED INTERIOR DESIGNERS AND LANDSCAPE ARCHITECTS.



METES AND BOUNDS PER RECORD AND BASED ON BEST FIT GRID FROM 2010 FIELD SURVEY. BEST FIT GRID DIFFERS FROM NAD 83 VA SOUTH GRID BY 29" COUNTER CLOCK WISE. COORDINATES SHOWN REFERENCED TO NAD 83 SOUTH GRID.

City of Williamsburg & County of James City
Circuit Court: This PLAT was recorded on
8 August 2012
at 9:49 AM/PM, PG _____
Document # 12.0016580
BETSY B. WOOLRIDGE, CLERK
_____, Dep. Clerk

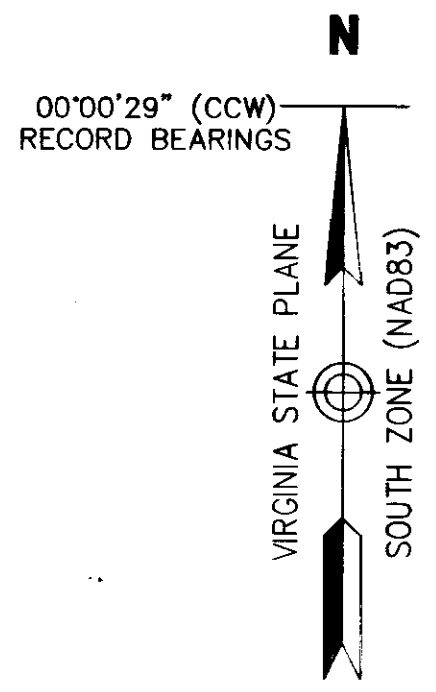


2 Large/Small Plats Recorded
here-with as # 12.0016580



Vanasse Hangen Brustlin, Inc.
Transportation Land Development Environmental Services
351 McLaws Circle, Suite 3
Williamsburg, Virginia 23185
(757) 220-0500 • FAX (757) 220-8544

120016580

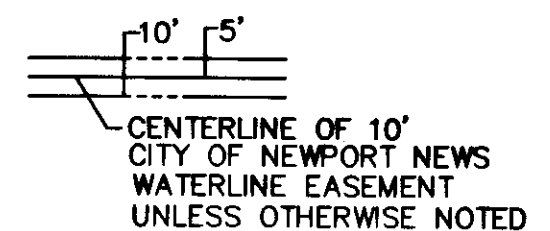


N/F
 XANTERRA KINGSMILL, LLC.
 PARCEL R-2
 PART OF TAX PARCEL
 5030100001 AND
 5040100001
 ZONED R-4
 REF. DOC. NO. 100015441 OF RECORD
 REF. INSTR. NO. 100014944 OF RECORD

N=3610107.6456
 E=12015430.4538

S89°47'10"W
 120.55' (TIE-LINE)
 S58°14'59"W
 29.74'
 S42°53'12"W
 21.07'
 S26°47'10"W
 40.10'
 S00°18'09"E
 34.29'

N=3610006.4713
 E=12015372.9161



378.79' S87°58'05"W

1127.83'

1608.70'

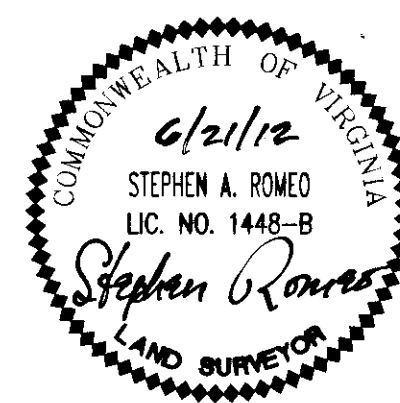
SURVEY TIE LINE
 PROPERTY LINE IS
 MEAN LOW WATER

WATER MAIN EASEMENT LINE TABLE			WATER MAIN EASEMENT LINE TABLE		
LINE	LENGTH	BEARING	LINE	LENGTH	BEARING
E9	15.77'	S32°27'23"W	E34	9.45'	S81°16'18"W
E10	78.32'	S32°27'23"W	E35	9.11'	S81°16'18"W
E11	51.84'	S54°57'23"W	E36	10.93'	S81°16'18"W
E12	9.99'	S66°12'23"W	E37	41.53'	S81°43'51"W
E13	69.13'	S66°12'23"W	E38	55.69'	S81°43'51"W
E14	29.39'	S88°42'23"W	E39	33.61'	S81°43'51"W
E15	90.92'	N71°21'12"W	E40	13.07'	S81°43'51"W
E16	41.61'	N51°00'13"W	E43	18.68'	N57°33'19"W
E17	14.05'	N62°15'13"W	E44	18.43'	N57°32'37"W
E18	13.62'	N73°30'13"W	E45	23.27'	S23°47'37"E
E19	12.55'	N84°45'13"W	E46	25.85'	S01°54'24"E
E20	36.54'	S87°57'39"W	E48	13.03'	N02°02'21"W
E21	22.80'	S87°57'39"W	E49	26.85'	S09°12'39"W
E22	20.56'	S87°57'39"W	E50	30.27'	S09°12'39"W
E23	44.92'	S87°57'39"W	E51	5.00'	N65°46'39"E
E24	19.31'	N80°47'21"W	E52	15.32'	N09°12'39"E
E25	1.44'	N80°47'21"W	E53	5.00'	N65°46'39"E
E26	1.72'	N80°47'21"W	E54	19.83'	N09°12'39"E
E27	1.27'	N80°47'21"W	E55	33.59'	S09°09'54"E
E28	21.16'	N80°47'21"W	E56	15.54'	N09°09'54"W
E29	13.14'	S54°12'39"W	E57	13.05'	N08°16'09"W
E30	15.34'	S76°42'39"W	E58	17.38'	N08°16'09"W
E31	13.14'	N80°47'21"W	E59	20.94'	N19°31'25"E
E32	15.34'	N58°17'21"W			
E33	11.09'	N47°02'21"W			

City of Williamsburg & County of James City
 Circuit Court: This PLAT was recorded on
8 August 2012
 at 3:44 AM/PM, PG —
 Document # 120016580
 BETSY B. WOOLRIDGE, CLERK
 Dep. Clerk

METES AND BOUNDS PER RECORD AND
 BASED ON BEST FIT GRID FROM 2010 FIELD
 SURVEY. BEST FIT GRID DIFFERS FROM NAD
 83 VA SOUTH GRID BY 29" COUNTER
 CLOCK WISE.
 COORDINATES SHOWN REFERENCED TO NAD
 83 SOUTH GRID.

THIS PLAT IS BASED UPON 2010 FIELD
 SURVEY BY LANDMARK DESIGN GROUP, NOW
 VANASSE HANGEN BRUSTLIN, INC. AND TO
 THE BEST OF MY KNOWLEDGE AND BELIEF
 COMPLIES WITH THE APPLICABLE
 REGULATIONS ESTABLISHED BY THE
 COMMONWEALTH OF VIRGINIA BOARD FOR
 ARCHITECTS, ENGINEERS, LAND SURVEYORS,
 CERTIFIED INTERIOR DESIGNERS AND
 LANDSCAPE ARCHITECTS.



2 Large/Small Plat(s) Recorded
 herewith as # 120016580

PLAT OF
 WATER MAIN EASEMENT
 PROJECTING (ON/ACROSS) LAND OF
 XANTERRA KINGSMILL, LLC.
 TO BE CONVEYED TO
 CITY OF NEWPORT NEWS
 BY
 CURRENT OWNER
 SHEET 2 OF 2

ROBERTS DISTRICT, JAMES CITY COUNTY, VIRGINIA
 DATE: 6/20/12 SCALE: 1"=50'



Vanasse Hangen Brustlin, Inc.
 Transportation Land Development Environmental Services
 351 McLaws Circle, Suite 3
 Williamsburg, Virginia 23185
 (757) 220-0500 • FAX (757) 220-8544