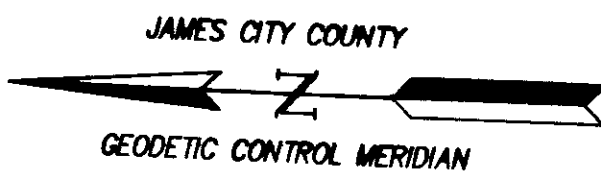
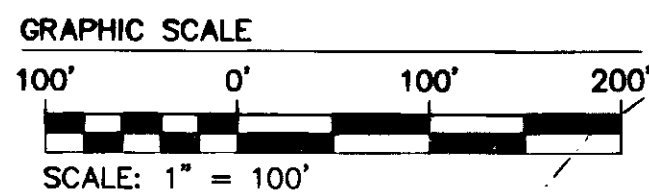
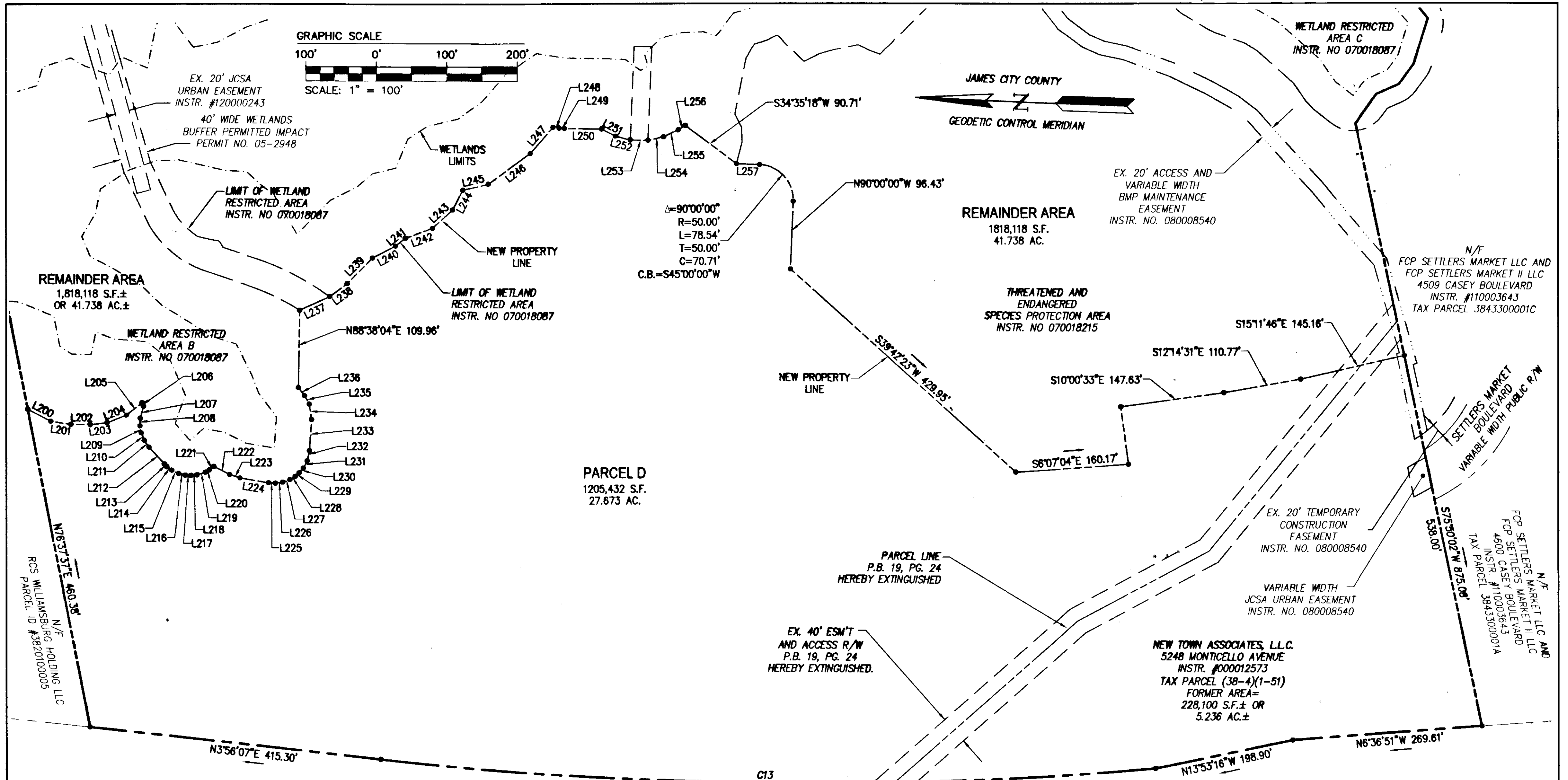


120016286



NOTE: SEE SHEET 2 FOR CONSERVATION EASEMENT AREA

ROUTE 199
(VARIABLE WIDTH RW - LIMITED ACCESS)

LINE	BEARING	LENGTH
L200	S25°08'28"W	36.73'
L201	S6°40'59"W	29.05'
L202	S1°40'07"E	27.38'
L203	S8°37'17"E	24.18'
L204	S23°59'06"E	29.36'
L205	S40°30'49"E	28.22'
L206	S67°07'10"W	5.17'
L207	N77°46'32"W	17.53'

LINE	BEARING	LENGTH
L208	N89°42'36"W	10.87'
L209	S78°13'16"W	10.15'
L210	S65°47'27"W	11.50'
L211	S52°19'42"W	11.94'
L212	S45°28'11"W	32.11'
L213	S45°28'11"W	4.93'
L214	S33°11'02"W	8.94'
L215	S23°18'35"W	10.99'

LINE	BEARING	LENGTH
L216	S11°18'12"W	9.93'
L217	S0°53'36"W	8.22'
L218	S8°47'07"E	8.66'
L219	S20°44'12"E	12.16'
L220	S31°33'07"E	6.68'
L221	S39°57'42"E	8.02'
L222	S24°51'19"W	25.20'
L223	S15°58'37"W	15.43'

LINE	BEARING	LENGTH
L224	S7°05'55"W	40.98'
L225	S1°28'13"W	9.81'
L226	S10°08'44"E	10.43'
L227	S22°32'38"E	11.17'
L228	S33°48'17"E	8.45'
L229	S43°01'49"E	7.63'
L230	S52°41'07"E	9.20'
L231	S64°33'19"E	11.48'

LINE	BEARING	LENGTH
L232	S79°43'34"E	14.92'
L233	S88°18'20"E	44.43'
L234	N78°54'32"E	22.13'
L235	N58°24'33"E	13.42'
L236	N50°41'41"E	14.60'
L237	S26°55'28"E	46.73'
L238	S38°53'27"E	31.15'
L239	S47°51'06"E	51.12'

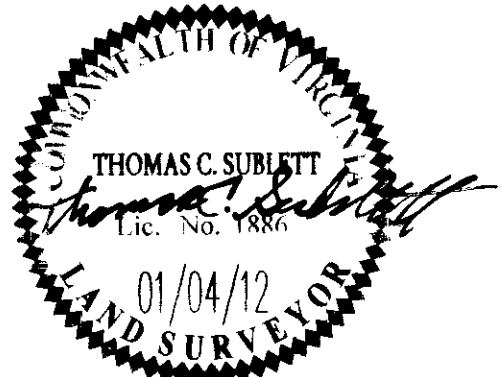
LINE	BEARING	LENGTH
L240	S30°04'07"E	36.92'
L241	S40°27'02"E	18.18'
L242	S22°38'12"E	40.76'
L243	S44°48'57"E	38.77'
L244	S64°34'11"E	31.73'
L245	S15°47'44"E	37.30'
L246	S38°28'48"E	73.61'
L247	S51°14'00"E	48.89'

LINE	BEARING	LENGTH
L248	S4°01'07"W	8.92'
L249	S0°55'31"W	7.53'
L250	S1°13'48"E	52.85'
L251	S24°59'40"W	21.88'
L252	S12°26'08"W	21.88'
L253	S1°01'33"E	25.00'
L254	S14°45'51"E	22.84'
L255	S27°52'38"E	22.84'

LINE	BEARING	LENGTH
L256	S34°26'01"E	11.84'
L257	S0°00'00"E	32.85'

City of Williamsburg & County of James City
Circuit Court: This PLAT was recorded on 6 August 2012
at 10:05 AMPM, PG. 4
Document # 120016286
BETSY B. WOOLRIDGE, CLERK
[Signature], Dep. Clerk

Rev	Date	Description	JFS Revised By
1	4-16-12		



NES
CONSULTING ENGINEERS
Hampton Roads | Central Virginia | Middle Peninsula

4 Large/Small Plat(s) Recorded
Instrument # 120016286

5248 Otis Towne Road, Suite 1
Williamsburg, Virginia 23188
Phone: (757) 253-0040
Fax: (757) 220-8994
www.nesva.com

PLAT OF SUBDIVISION
AND BOUNDARY LINE EXTINGUISHMENT
SECTION 7 AND 8
PARCEL B, PARCEL C AND PARCEL D
NEW TOWN
OWNED BY NEW TOWN ASSOCIATES, L.L.C.
BERKELEY DISTRICT JAMES CITY COUNTY VIRGINIA

Project Contacts: REC/TCB	
Project Number: 6632-07-07	Date: 01/04/12
Scale: 1"=100'	Date: 01/04/12
Sheet Number	
4 of 4	