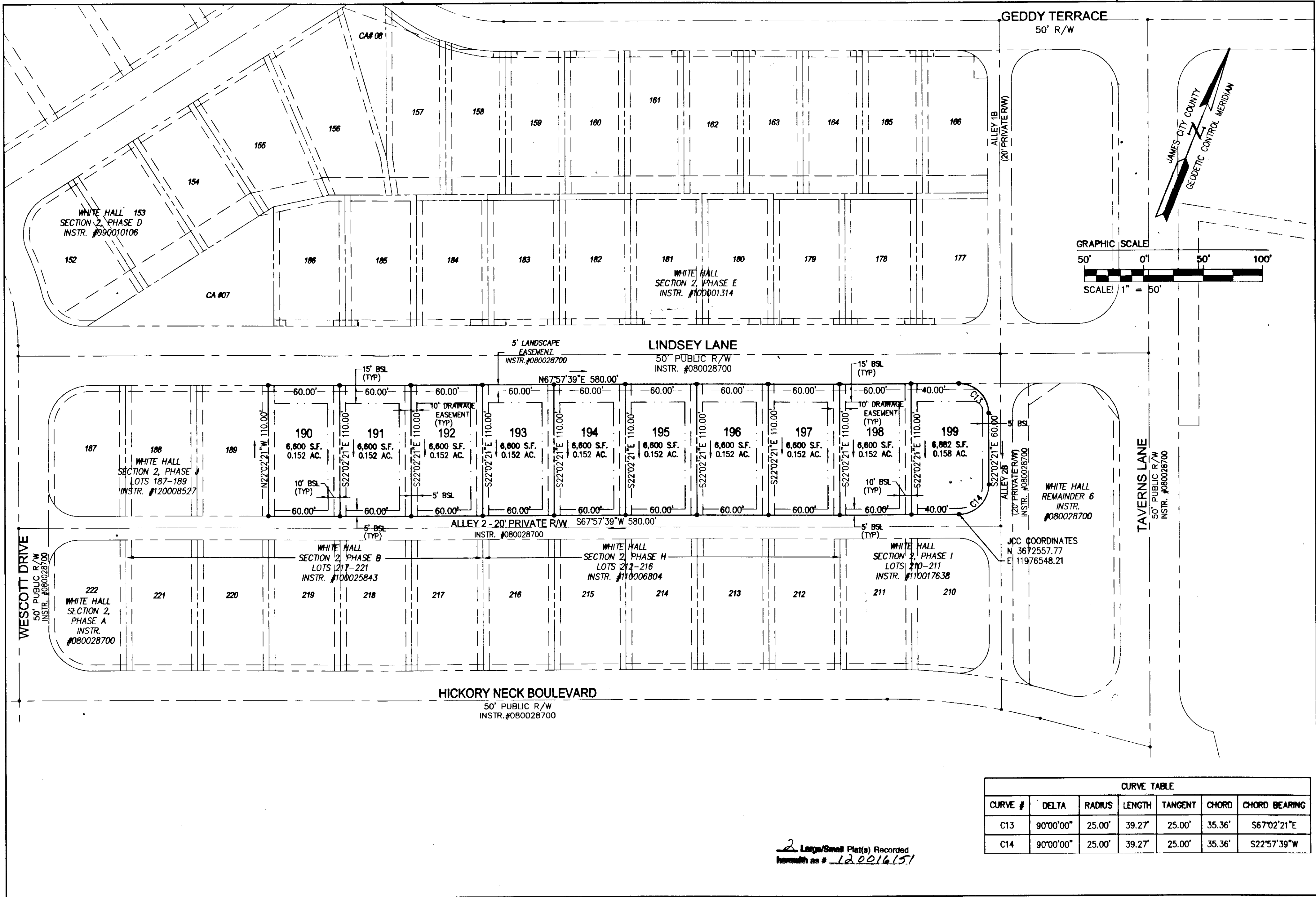


120016151

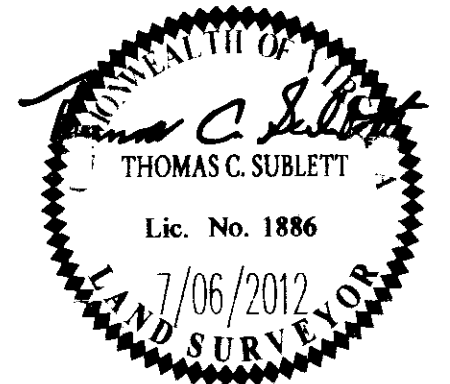


CURVE TABLE						
CURVE #	DELTA	RADIUS	LENGTH	TANGENT	CHORD	CHORD BEARING
C13	90°00'00"	25.00'	39.27'	25.00'	35.36'	S67°02'21"E
C14	90°00'00"	25.00'	39.27'	25.00'	35.36'	S22°57'39"W

2 Large/Small Plat(s) Recorded
 with as # 120016151

1	07/06/12	REVISED PER JCC & VDOT COMMENTS	ABS
Rev	Date	Description	Revised By

City of Williamsburg & County of James City
 Circuit Court: This PLAT was recorded on
 2 August 2012
 at 3:30 AM/PM, PG
 Document # 120016151
 BETSY B. WOOLRIDGE, CLERK
 Dep. Clerk



AES
 CONSULTING ENGINEERS
 Hampton Roads | Central Virginia | Middle Peninsula
 5248 Olde Towne Road, Suite 1
 Williamsburg, Virginia 23188
 Phone: (757) 253-0040
 Fax: (757) 220-8994
 www.aesva.com

**PLAT OF SUBDIVISION OF
 REMAINDER 4
 WHITE HALL
 SECTION 2, PHASE L
 OWNER: RAUCH DEVELOPMENT CO., L.L.C.
 JCC CASE NO. S-0022-2012**

STONEHOUSE DISTRICT | JAMES CITY COUNTY | VIRGINIA

Project Contacts:	TCS/RMS
Project Number:	9048-11
Scale:	Date:
1"=50'	8/05/12
Sheet Number	
2 OF 2	