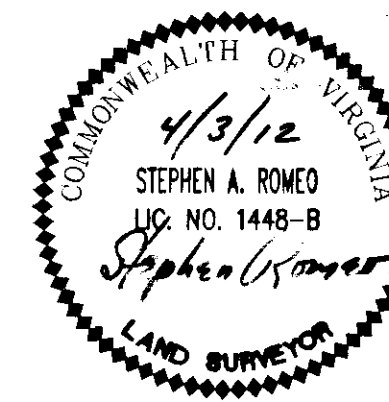


120013948

CURVE TABLE						
CURVE	LENGTH	RADIUS	TANGENT	CHORD	CHORD BEARING	DELTA
C1	50.55'	105.00'	25.78'	50.06'	N87°53'41"E	27°35'03"
C2	129.11'	311.00'	65.50'	128.18'	N59°22'27"E	23°47'08"
C3	5.35'	80.30'	2.68'	5.35'	S06°59'31"E	3°48'58"
C4	69.32'	95.45'	36.27'	67.81'	S25°53'13"E	41°36'39"
C5	45.21'	80.30'	23.22'	44.62'	N25°01'47"W	32°15'34"
C6	64.03'	1970.00'	32.02'	64.03'	N47°37'23"W	1°51'44"
C7	25.75'	35.45'	13.47'	25.18'	N25°53'13"W	41°36'39"
C8	88.34'	140.30'	45.69'	86.89'	N23°07'18"W	36°04'32"
C9	137.03'	2030.00'	68.54'	137.00'	S46°37'14"E	3°52'03"

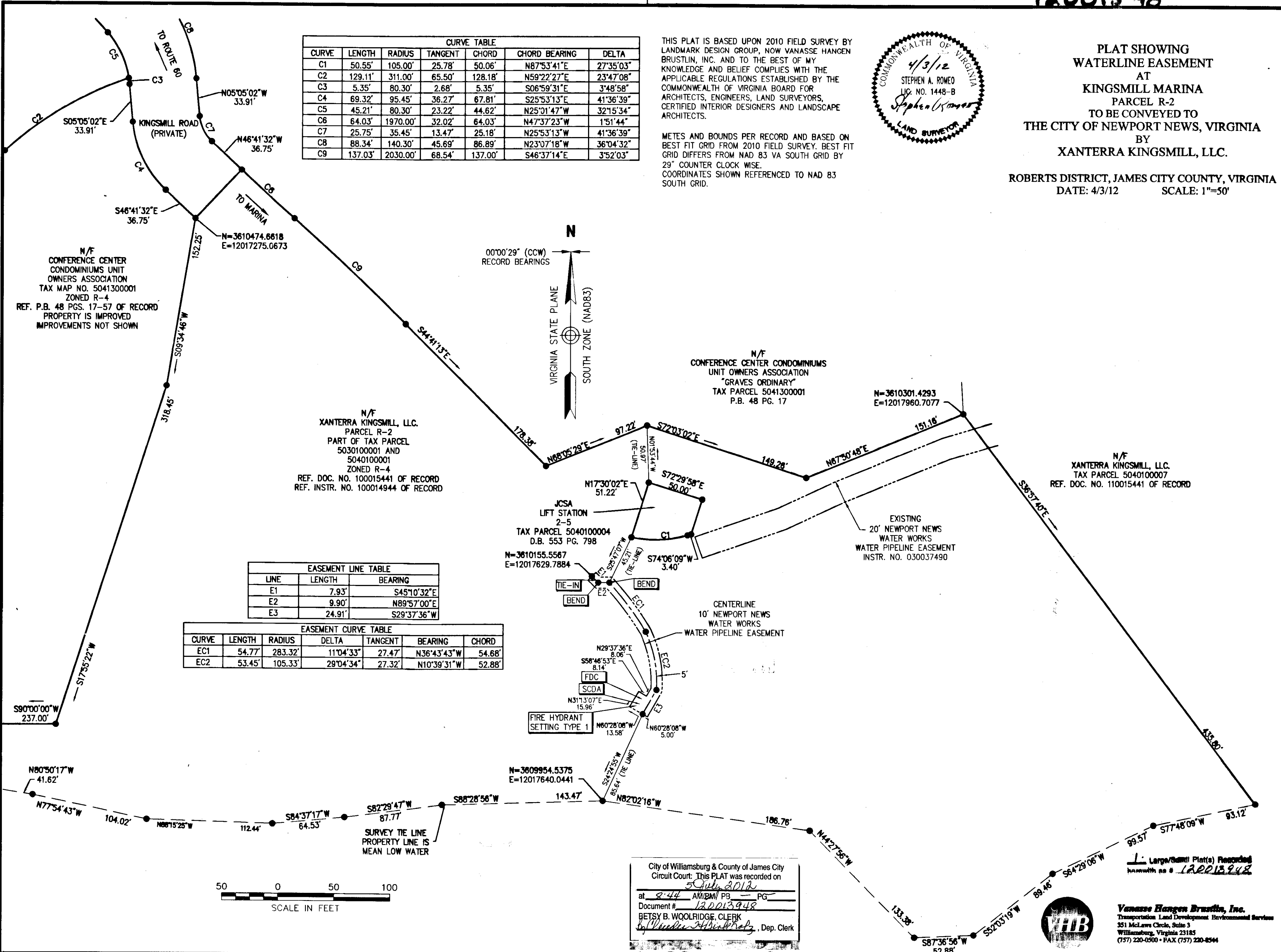
THIS PLAT IS BASED UPON 2010 FIELD SURVEY BY LANDMARK DESIGN GROUP, NOW VANASSE HANGEN BRUSTLIN, INC. AND TO THE BEST OF MY KNOWLEDGE AND BELIEF COMPLIES WITH THE APPLICABLE REGULATIONS ESTABLISHED BY THE COMMONWEALTH OF VIRGINIA BOARD FOR ARCHITECTS, ENGINEERS, LAND SURVEYORS, CERTIFIED INTERIOR DESIGNERS AND LANDSCAPE ARCHITECTS.

METES AND BOUNDS PER RECORD AND BASED ON BEST FIT GRID FROM 2010 FIELD SURVEY. BEST FIT GRID DIFFERS FROM NAD 83 VA SOUTH GRID BY 29" COUNTER CLOCK WISE. COORDINATES SHOWN REFERENCED TO NAD 83 SOUTH GRID.



PLAT SHOWING
WATERLINE EASEMENT
AT
KINGSMILL MARINA
PARCEL R-2
TO BE CONVEYED TO
THE CITY OF NEWPORT NEWS, VIRGINIA
BY
XANTERRA KINGSMILL, LLC.

ROBERTS DISTRICT, JAMES CITY COUNTY, VIRGINIA
DATE: 4/3/12 SCALE: 1"=50'



EASEMENT LINE TABLE		
LINE	LENGTH	BEARING
E1	7.93'	S45°10'32"E
E2	9.90'	N89°57'00"E
E3	24.91'	S29°37'36"W

EASEMENT CURVE TABLE						
CURVE	LENGTH	RADIUS	DELTA	TANGENT	BEARING	CHORD
EC1	54.77'	283.32'	11°04'33"	27.47'	N36°43'43"W	54.68'
EC2	53.45'	105.33'	29°04'34"	27.32'	N10°39'31"W	52.88'



City of Williamsburg & County of James City
Circuit Court: This PLAT was recorded on
5 July 2012
at 2:44 AM/PM PB PG
Document # 120013948
BETSY B. WOOLRIDGE, CLERK
By *[Signature]*, Dep. Clerk



Vanasse Hangen Brustlin, Inc.
Transportation Land Development Environmental Services
551 McLaws Circle, Suite 3
Williamsburg, Virginia 23185
(757) 220-0300 • FAX (757) 220-8544