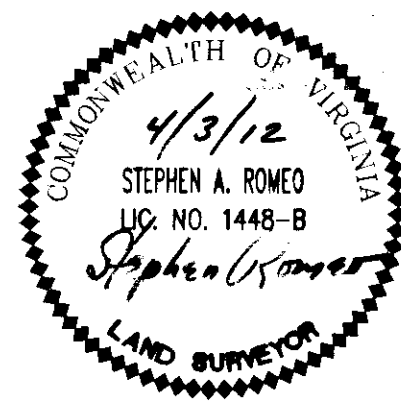


120013948

| CURVE TABLE | | | | | | |
|-------------|---------|----------|---------|---------|---------------|-----------|
| CURVE | LENGTH | RADIUS | TANGENT | CHORD | CHORD BEARING | DELTA |
| C1 | 50.55' | 105.00' | 25.78' | 50.06' | N87°53'41"E | 27°35'03" |
| C2 | 129.11' | 311.00' | 65.50' | 128.18' | N59°22'27"E | 23°47'08" |
| C3 | 5.35' | 80.30' | 2.68' | 5.35' | S06°59'31"E | 3°48'58" |
| C4 | 69.32' | 95.45' | 36.27' | 67.81' | S25°53'13"E | 41°36'39" |
| C5 | 45.21' | 80.30' | 23.22' | 44.62' | N25°01'47"W | 32°15'34" |
| C6 | 64.03' | 1970.00' | 32.02' | 64.03' | N47°37'23"W | 1°51'44" |
| C7 | 25.75' | 35.45' | 13.47' | 25.18' | N25°53'13"W | 41°36'39" |
| C8 | 88.34' | 140.30' | 45.69' | 86.89' | N23°07'18"W | 36°04'32" |
| C9 | 137.03' | 2030.00' | 68.54' | 137.00' | S46°37'14"E | 3°52'03" |

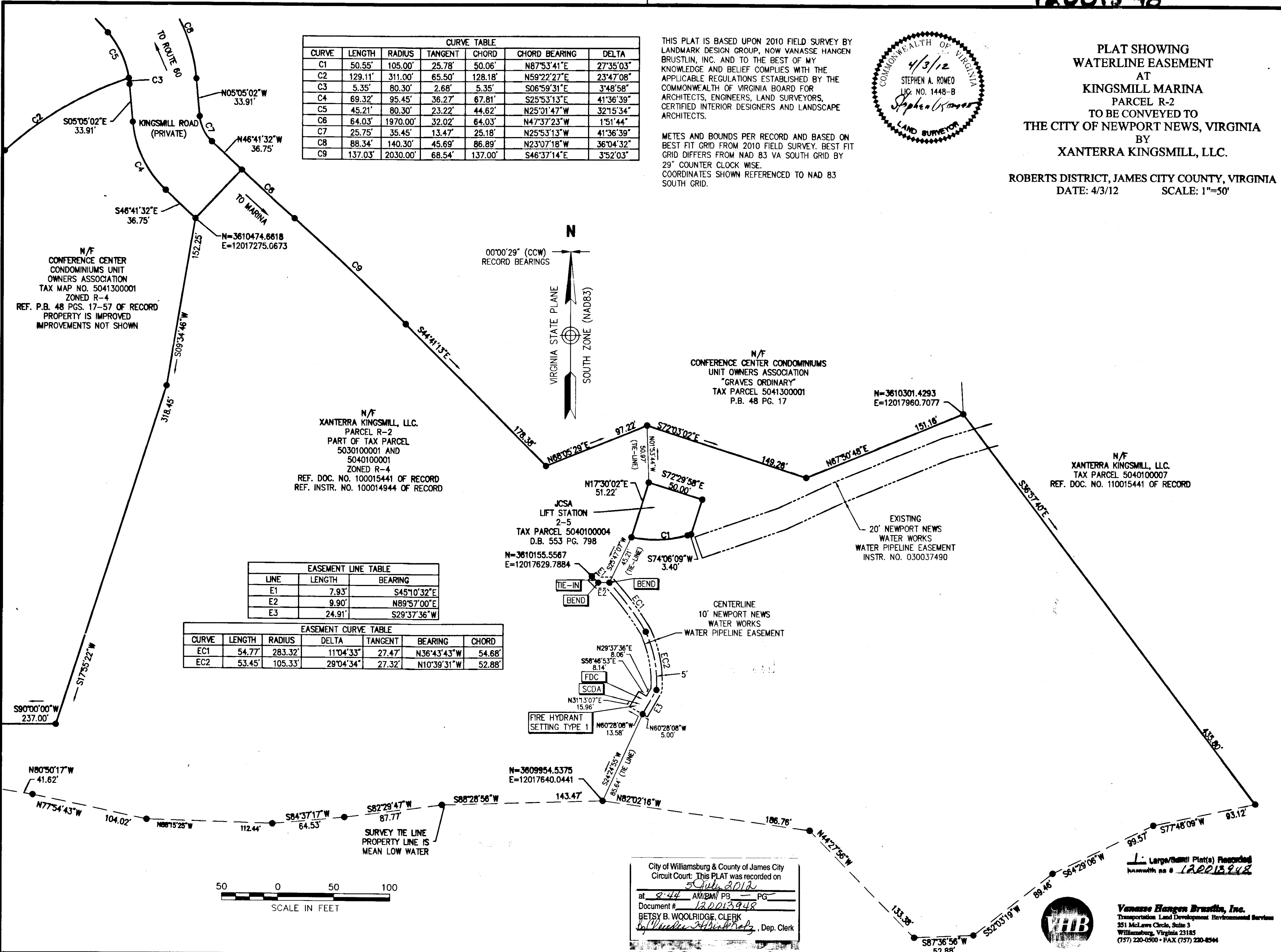
THIS PLAT IS BASED UPON 2010 FIELD SURVEY BY LANDMARK DESIGN GROUP, NOW VANASSE HANGEN BRUSTLIN, INC. AND TO THE BEST OF MY KNOWLEDGE AND BELIEF COMPLIES WITH THE APPLICABLE REGULATIONS ESTABLISHED BY THE COMMONWEALTH OF VIRGINIA BOARD FOR ARCHITECTS, ENGINEERS, LAND SURVEYORS, CERTIFIED INTERIOR DESIGNERS AND LANDSCAPE ARCHITECTS.



PLAT SHOWING WATERLINE EASEMENT AT KINGSMILL MARINA PARCEL R-2 TO BE CONVEYED TO THE CITY OF NEWPORT NEWS, VIRGINIA BY XANTERRA KINGSMILL, LLC.

ROBERTS DISTRICT, JAMES CITY COUNTY, VIRGINIA
 DATE: 4/3/12 SCALE: 1"=50'

METES AND BOUNDS PER RECORD AND BASED ON BEST FIT GRID FROM 2010 FIELD SURVEY. BEST FIT GRID DIFFERS FROM NAD 83 VA SOUTH GRID BY 29" COUNTER CLOCK WISE. COORDINATES SHOWN REFERENCED TO NAD 83 SOUTH GRID.



| EASEMENT LINE TABLE | | |
|---------------------|--------|-------------|
| LINE | LENGTH | BEARING |
| E1 | 7.93' | S45°10'32"E |
| E2 | 9.90' | N89°57'00"E |
| E3 | 24.91' | S29°37'36"W |

| EASEMENT CURVE TABLE | | | | | | |
|----------------------|--------|---------|-----------|---------|-------------|--------|
| CURVE | LENGTH | RADIUS | DELTA | TANGENT | BEARING | CHORD |
| EC1 | 54.77' | 283.32' | 11°04'33" | 27.47' | N36°43'43"W | 54.68' |
| EC2 | 53.45' | 105.33' | 29°04'34" | 27.32' | N10°39'31"W | 52.88' |



City of Williamsburg & County of James City Circuit Court: This PLAT was recorded on 5 July 2012 at 2:44 AM/PM PB PG Document # 120013948
 BETSY B. WOOLRIDGE, CLERK
 by Stephen A. Romeo, Dep. Clerk

Large/Small Plat(s) Recorded herewith as # 120013948



Vanasse Hangen Brustlin, Inc.
 Transportation Land Development Environmental Services
 551 McLaws Circle, Suite 3
 Williamsburg, Virginia 23185
 (757) 220-0300 • FAX (757) 220-8544