

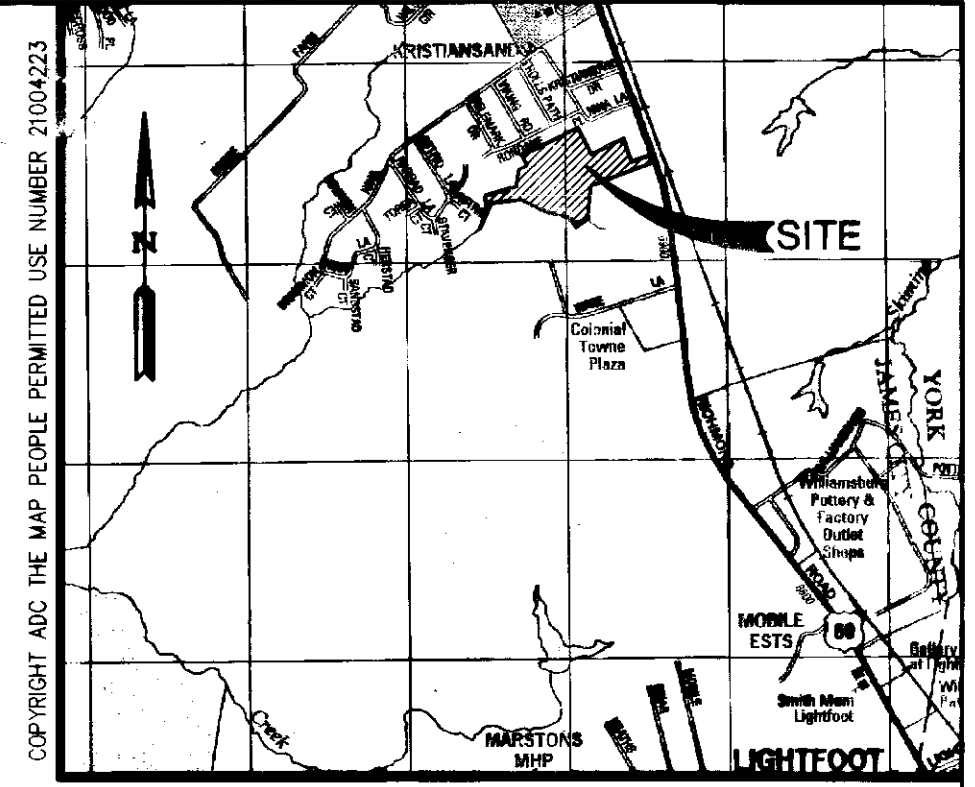
120013782

SURVEYOR'S CERTIFICATE
 I, ROBERT D. MANN, A DULY REGISTERED LAND SURVEYOR, DO HEREBY CERTIFY THAT, TO THE BEST OF MY KNOWLEDGE AND BELIEF, THIS PLAT FOR PHASE 19-A, UNITS #1901, 1902, 1903, AND 1904, WILLIAMSBURG VILLAGE AT NORGE CONDOMINIUM IS ACCURATE AND COMPLIES WITH THE PROVISIONS OF VIRGINIA CODE ANN., SUBSECTION SS-79.58 (A), AS AMENDED.
 _____ DATE 6/7/12
 ROBERT D. MANN, L.S. #002509

AREA TABULATION

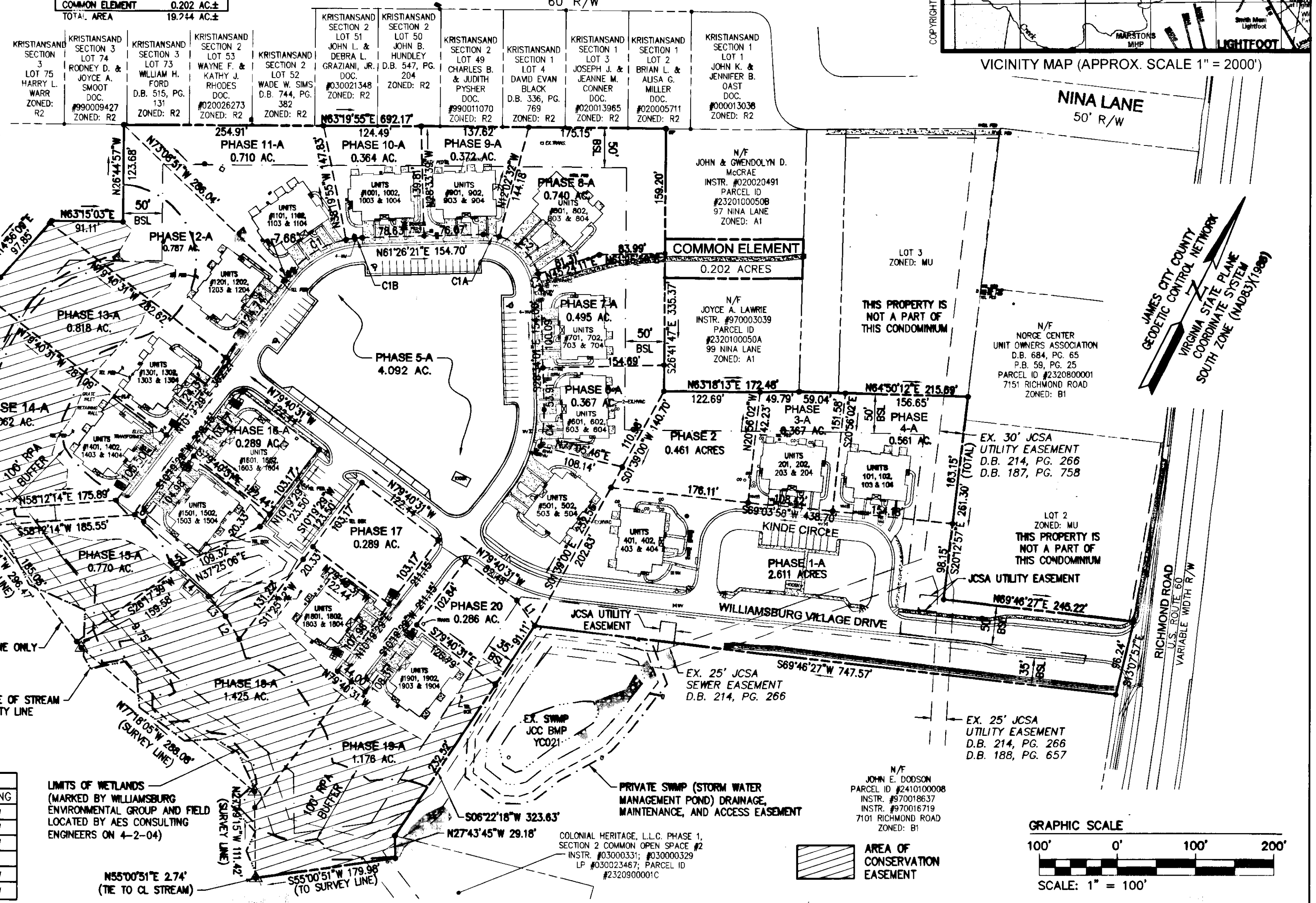
PHASE 1-A	2.611 AC.±
PHASE 2	0.461 AC.±
PHASE 3-A	0.367 AC.±
PHASE 4-A	0.561 AC.±
PHASE 5-A	4.092 AC.±
PHASE 6-A	0.367 AC.±
PHASE 7-A	0.495 AC.±
PHASE 8-A	0.740 AC.±
PHASE 9-A	0.372 AC.±
PHASE 10-A	0.364 AC.±
PHASE 11-A	0.710 AC.±
PHASE 12-A	0.787 AC.±
PHASE 13-A	0.818 AC.±
PHASE 14-A	2.062 AC.±
PHASE 15-A	0.770 AC.±
PHASE 16-A	0.289 AC.±
PHASE 17	0.289 AC.±
PHASE 18-A	1.425 AC.±
PHASE 19-A	1.176 AC.±
PHASE 20	0.286 AC.±
COMMON ELEMENT	0.202 AC.±
TOTAL AREA	19.244 AC.±

- GENERAL NOTES:**
- SITE IS ZONED M-U, (MIXED USE) - WITH PROFFERS (PROFFERS RECORDED AS INSTRUMENT #040010062)
 - WETLANDS AND LAND WITHIN THE RESOURCE PROTECTION AREAS SHALL REMAIN IN A NATURAL UNDISTURBED STATE EXCEPT FOR THOSE ACTIVITIES PERMITTED BY SECTION 23-9(C)(1) OF THE JAMES CITY COUNTY CODE.
 - NATURAL OPEN SPACE EASEMENTS SHALL REMAIN IN A NATURAL UNDISTURBED STATE EXCEPT FOR THOSE ACTIVITIES REFERENCED ON THE DEED OF EASEMENT.
 - THE PROPERTY AS SHOWN IS ALL OF TAX PARCEL (23-2)(1)-50. PROPERTY ADDRESS: 7145 RICHMOND ROAD.
 - THIS PROPERTY LIES IN ZONE "X", (AREAS DETERMINED TO BE OUTSIDE THE 0.2% ANNUAL CHANCE FLOODPLAIN) PER F.I.R.M. #S1095C0110 DATED 9/28/07.
 - PROPERTY REFERENCE: INSTRUMENT #040017945.
 - THIS PLAT HAS BEEN PREPARED WITHOUT THE BENEFIT OF A TITLE REPORT AND IS SUBJECT TO EASEMENTS, SERVITUDES AND COVENANTS OF RECORD.
 - THIS PLAT IS BASED ON AVAILABLE DEEDS AND PLATS OF RECORD AND DOES NOT REPRESENT AN ACTUAL FIELD SURVEY.
 - ALL AREAS COMPUTED TO SURVEY TIE LINE.



CE- COMMON ELEMENTS
 COMMON ELEMENTS INCLUDE ALL PORTIONS OF THE CONDOMINIUM OTHER THAN THE UNITS DEFINED IN THE CONDOMINIUM INSTRUMENTS (AS DEFINED IN THE DECLARATION OF CONDOMINIUM).
 EXAMPLES OF COMMON ELEMENTS ARE: PARKING, PAVED AREAS, THE GROUNDS (WHETHER OR NOT LANDSCAPED), ENTRANCE MONUMENTS, DRAINAGE PONDS, ALL PORTIONS OF THE BUILDINGS NOT A PART OF THE UNIT NOR DEFINED AS LIMITED COMMON ELEMENTS, AND ALL CONDUITS, INSTALLATIONS, WIRES, PIPES, EQUIPMENT, ETC. WHICH SERVE OTHER COMMON ELEMENTS OR WHICH SERVE MORE THAN ONE UNIT.
 THE UNIT OWNERS ASSOCIATION IS RESPONSIBLE FOR MAINTENANCE OF COMMON LANDS TO THE EXTENT THE SAME ARE LOCATED WITHIN THE COMMON ELEMENTS OF THE CONDOMINIUM AND NOT WITHSTANDING THE FACT THAT A PORTION OF THOSE COMMON LANDS MAY BE SUBJECT TO A NATURAL OPEN SPACE EASEMENT DEDICATED TO JAMES CITY COUNTY.

LCE- LIMITED COMMON ELEMENTS
 LIMITED COMMON ELEMENTS ARE AS DEFINED IN THE CONDOMINIUM INSTRUMENTS. EXCEPT AS MAY BE OTHERWISE EXPRESSLY PROVIDED, LIMITED COMMON ELEMENTS INCLUDE VERANDAH AND ANY OTHER APPARATUS DESIGNED TO SERVE A SINGLE UNIT, BUT LOCATED OUTSIDE THE BOUNDARIES THEREOF, (SUCH AS A FENCE AROUND A PATIO, PORCH OR DECK).



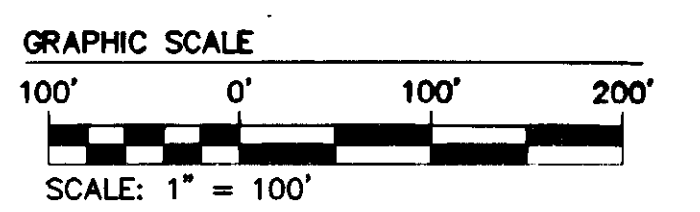
LINE TABLE

LINE	DIRECTION	LENGTH
L1	N62°13'39"W	39.87'
L2	N57°38'15"W	34.11'
L3	N66°36'40"W	32.90'
L4	N75°08'51"W	55.44'
L5	N26°17'39"E	9.63'
L6	N79°40'31"W	14.18'
L7	N63°42'21"W	23.56'

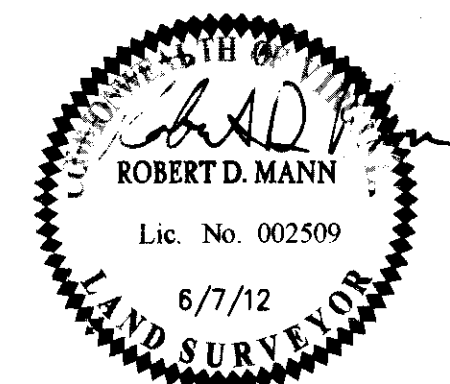
COLONIAL HERITAGE, L.L.C.
 PHASE 1, SECTION 2
 COMMON OPEN SPACE #2
 INSTR. #03000331
 LP #03000329
 LP #03000347
 PARCEL ID #232090001C
 ZONED MU (WITH PROFFERS)

CURVE TABLE

CURVE	DELTA	RADIUS	ARC	TANGENT	CHORD	CHORD BEARING
C1	41°20'36"	122.00'	88.03'	46.03'	86.14'	S30°59'47"W
C1A	16°31'07"	72.00'	20.76'	10.45'	20.69'	S69°41'55"W
C1B	9°46'16"	122.00'	20.81'	10.43'	20.78'	S56°33'13"W
C2	57°26'42"	72.00'	72.19'	39.46'	69.20'	N73°19'10"W
C3	16°01'48"	72.00'	20.14'	10.14'	20.08'	N36°34'55"W
C4	15°39'47"	172.00'	47.02'	23.66'	46.87'	N20°44'07"W



City of Williamsburg & County of James City
 Circuit Court: This PLAT was recorded on
 2 July 2012
 at 3:46 PM, PB _____ PG _____
 Document # 120013782
 BETSY B. WOOLRIDGE, CLERK
 _____, Dep. Clerk



"EXHIBIT M-1"
 PLAT OF CONDOMINIUM
 WILLIAMSBURG VILLAGE AT NORGE CONDOMINIUM
 PHASE 19-A
 UNITS #1901, 1902, 1903, AND 1904
 STONEHOUSE DISTRICT COUNTY OF JAMES CITY VIRGINIA

Project Contacts: AES
 Project Number: 9286-02-B
 Scale: 1" = 100'
 Date: 06-07-2012
 Sheet Number: 1 OF 9