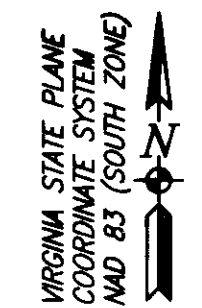
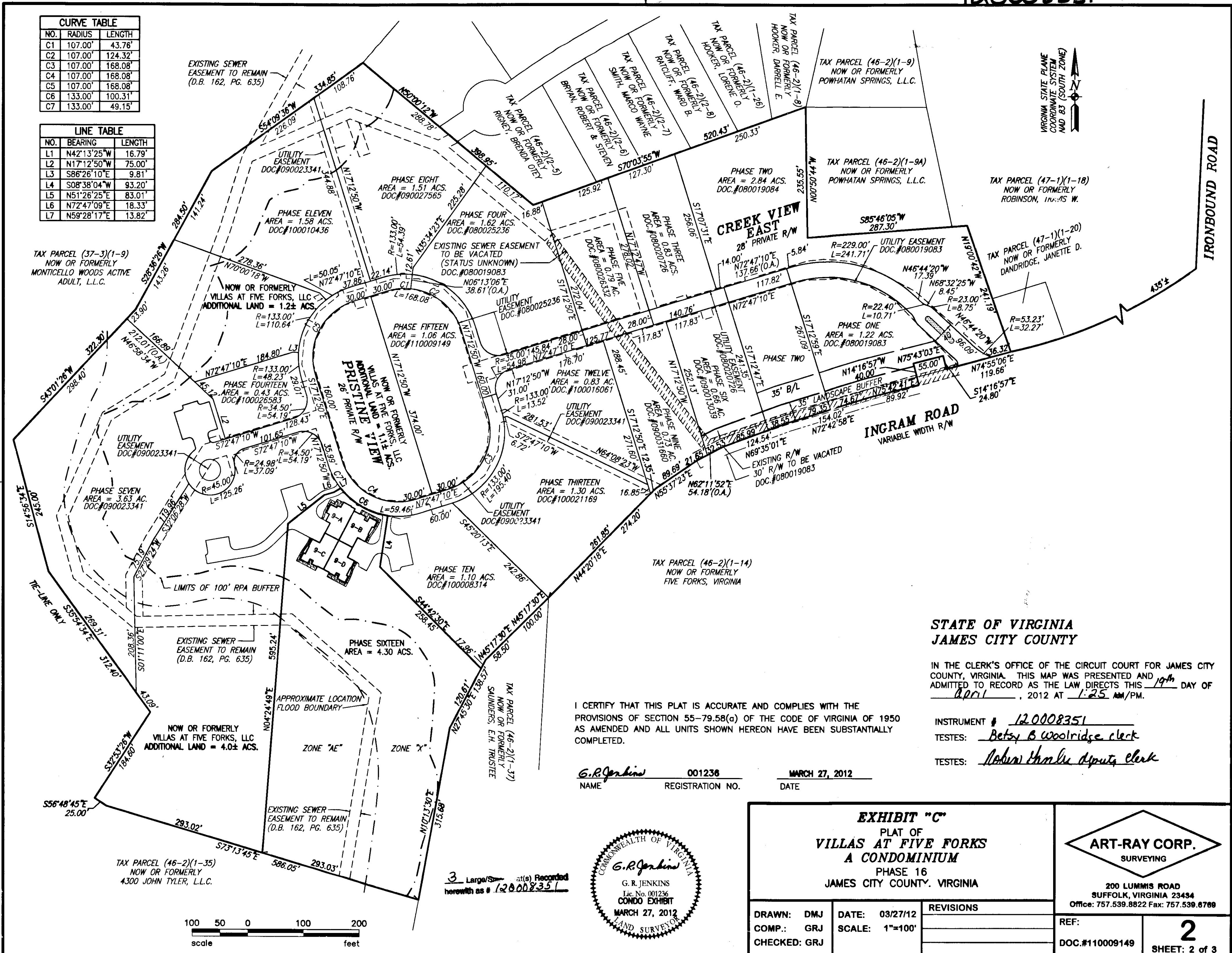


CURVE TABLE		
NO.	RADIUS	LENGTH
C1	107.00'	43.76'
C2	107.00'	124.32'
C3	107.00'	168.08'
C4	107.00'	168.08'
C5	107.00'	168.08'
C6	133.00'	100.31'
C7	133.00'	49.15'

LINE TABLE		
NO.	BEARING	LENGTH
L1	N42°13'25"W	16.79'
L2	N17°12'50"W	75.00'
L3	S86°26'10"E	9.81'
L4	S08°38'04"W	93.20'
L5	N51°26'25"E	83.01'
L6	N72°47'09"E	18.33'
L7	N59°28'17"E	13.82'



IRONBOUND ROAD



TAX PARCEL (37-3)(1-9) NOW OR FORMERLY MONTICELLO WOODS ACTIVE ADULT, L.L.C.

PHASE SEVEN AREA = 3.63 ACS. DOC.#090023341

EXISTING SEWER EASEMENT TO REMAIN (D.B. 162, PG. 635)

TAX PARCEL (46-2)(1-35) NOW OR FORMERLY 4300 JOHN TYLER, L.L.C.

I CERTIFY THAT THIS PLAT IS ACCURATE AND COMPLIES WITH THE PROVISIONS OF SECTION 55-79.58(a) OF THE CODE OF VIRGINIA OF 1950 AS AMENDED AND ALL UNITS SHOWN HEREON HAVE BEEN SUBSTANTIALLY COMPLETED.

G.R. Jenkins 001236 MARCH 27, 2012
NAME REGISTRATION NO. DATE

STATE OF VIRGINIA
JAMES CITY COUNTY

IN THE CLERK'S OFFICE OF THE CIRCUIT COURT FOR JAMES CITY COUNTY, VIRGINIA. THIS MAP WAS PRESENTED AND ADMITTED TO RECORD AS THE LAW DIRECTS THIS 19th DAY OF April, 2012 AT 1:25 AM/PM.

INSTRUMENT # 120008351
TESTES: Betsy B Woolridge clerk
TESTES: Robert Charles Depina clerk

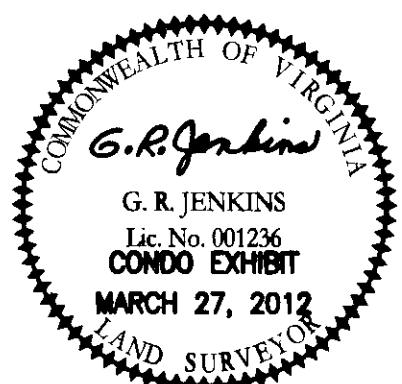
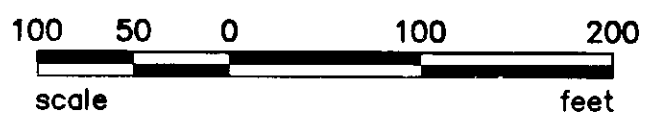


EXHIBIT "C"
PLAT OF
VILLAS AT FIVE FORKS
A CONDOMINIUM
PHASE 16
JAMES CITY COUNTY, VIRGINIA



DRAWN: DMJ	DATE: 03/27/12	REVISIONS
COMP.: GRJ	SCALE: 1"=100'	
CHECKED: GRJ		

REF:	2
DOC.#110009149	



6.12861.0-07 final.dwg 16.dwg