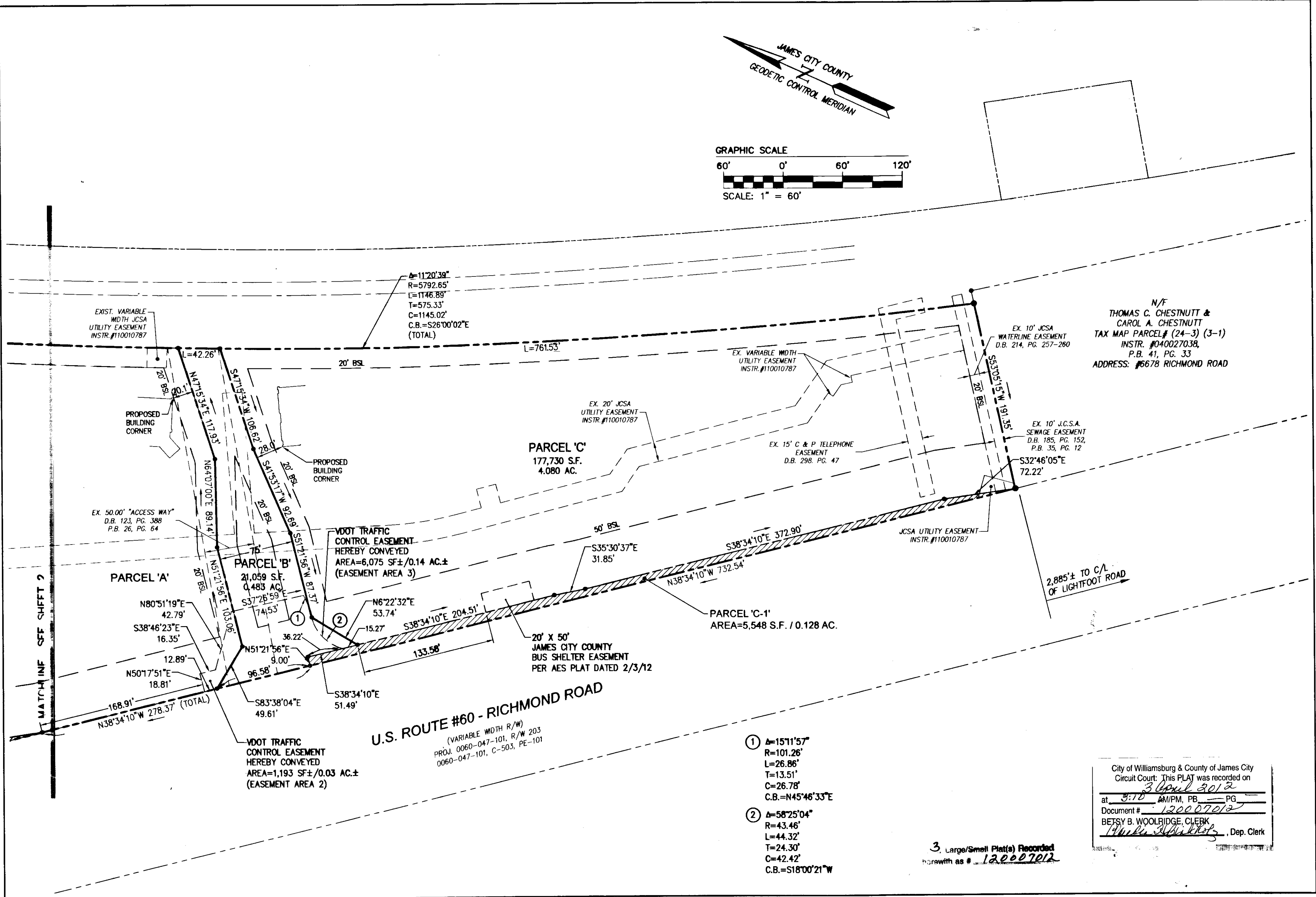
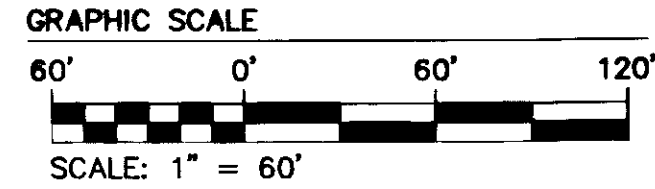
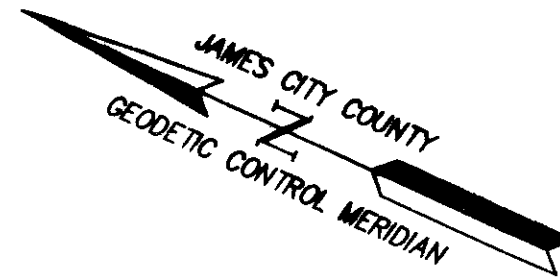


120007012



N/F
THOMAS C. CHESTNUTT &
CAROL A. CHESTNUTT
TAX MAP PARCEL# (24-3) (3-1)
INSTR. #040027038,
P.B. 41, PG. 33
ADDRESS: #6678 RICHMOND ROAD

City of Williamsburg & County of James City
Circuit Court: This PLAT was recorded on
3 April 2012
at 9:10 AM/PM, PB PG
Document # 120007012
BETSY B. WOOLRIDGE, CLERK
[Signature], Dep. Clerk

3 Large/Small Plat(s) Recorded
drawn as # 120007012

Rev	Date	Description	Revised By



AES
CONSULTING ENGINEERS
5248 Olde Towne Road, Suite 1
Williamsburg, Virginia 23188
Phone: (757) 253-0040
Fax: (757) 220-8994
www.aesva.com

Hampton Roads | Central Virginia | Middle Peninsula

**PLAT OF SUBDIVISION
AND RIGHT-OF-WAY DEDICATION
WILLIAMSBURG POTTERY PROPERTIES, LLC.
TO VIRGINIA DEPARTMENT OF TRANSPORTATION**

STONEHOUSE DISTRICT JAMES CITY COUNTY VIRGINIA

Project Contacts:	MJR/TCS
Project Number:	9510-04
Scale:	1"=60'
Date:	02/13/12
Sheet Number	
3 OF 3	