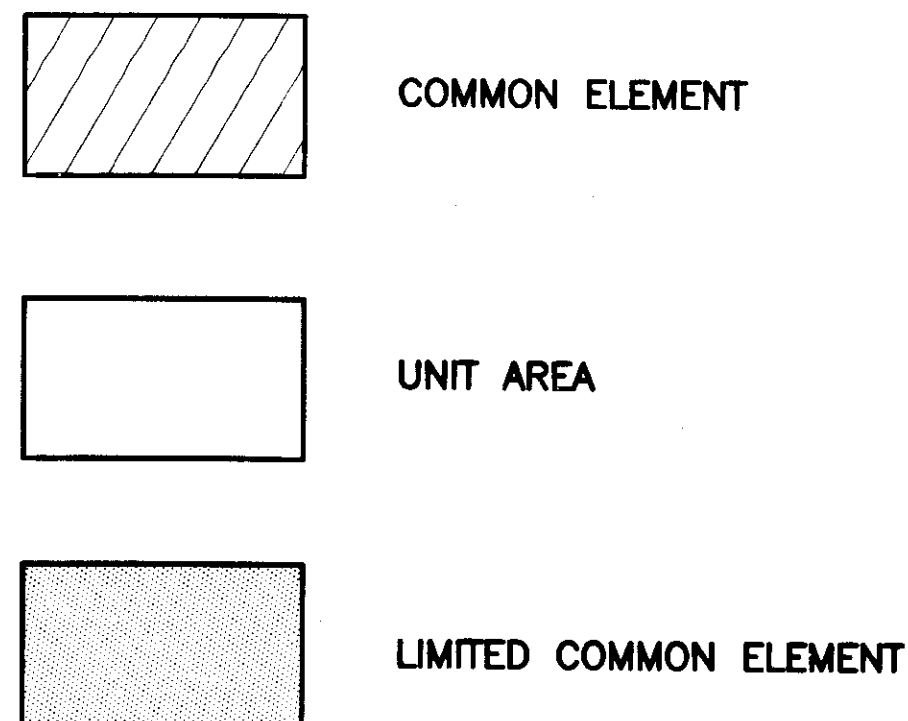
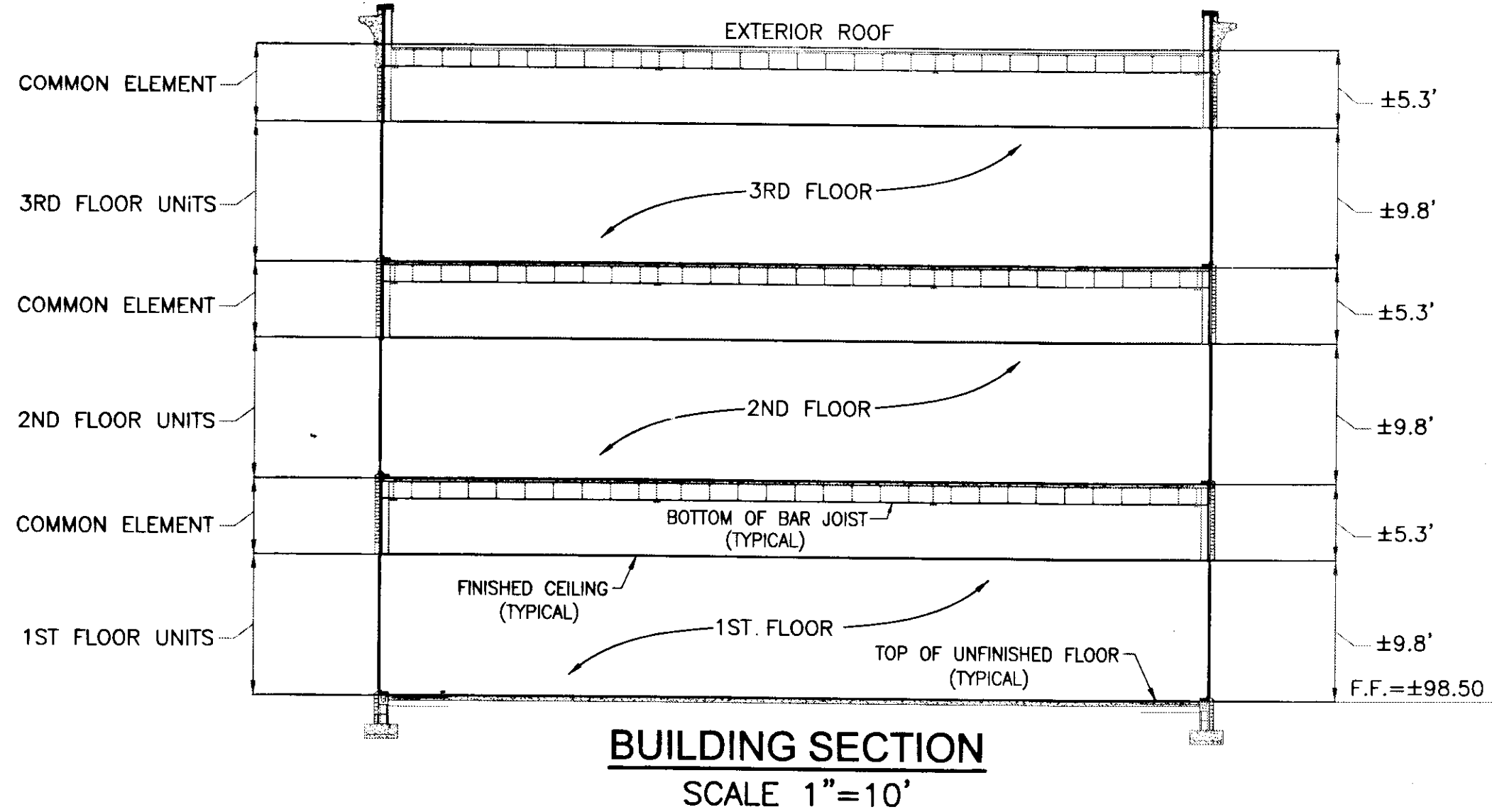
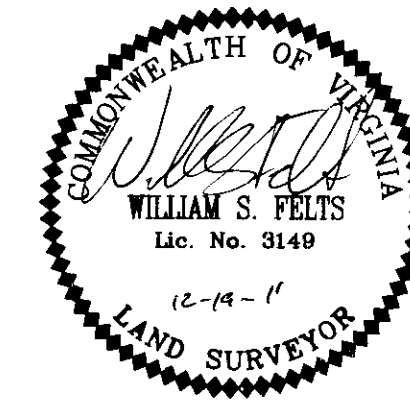
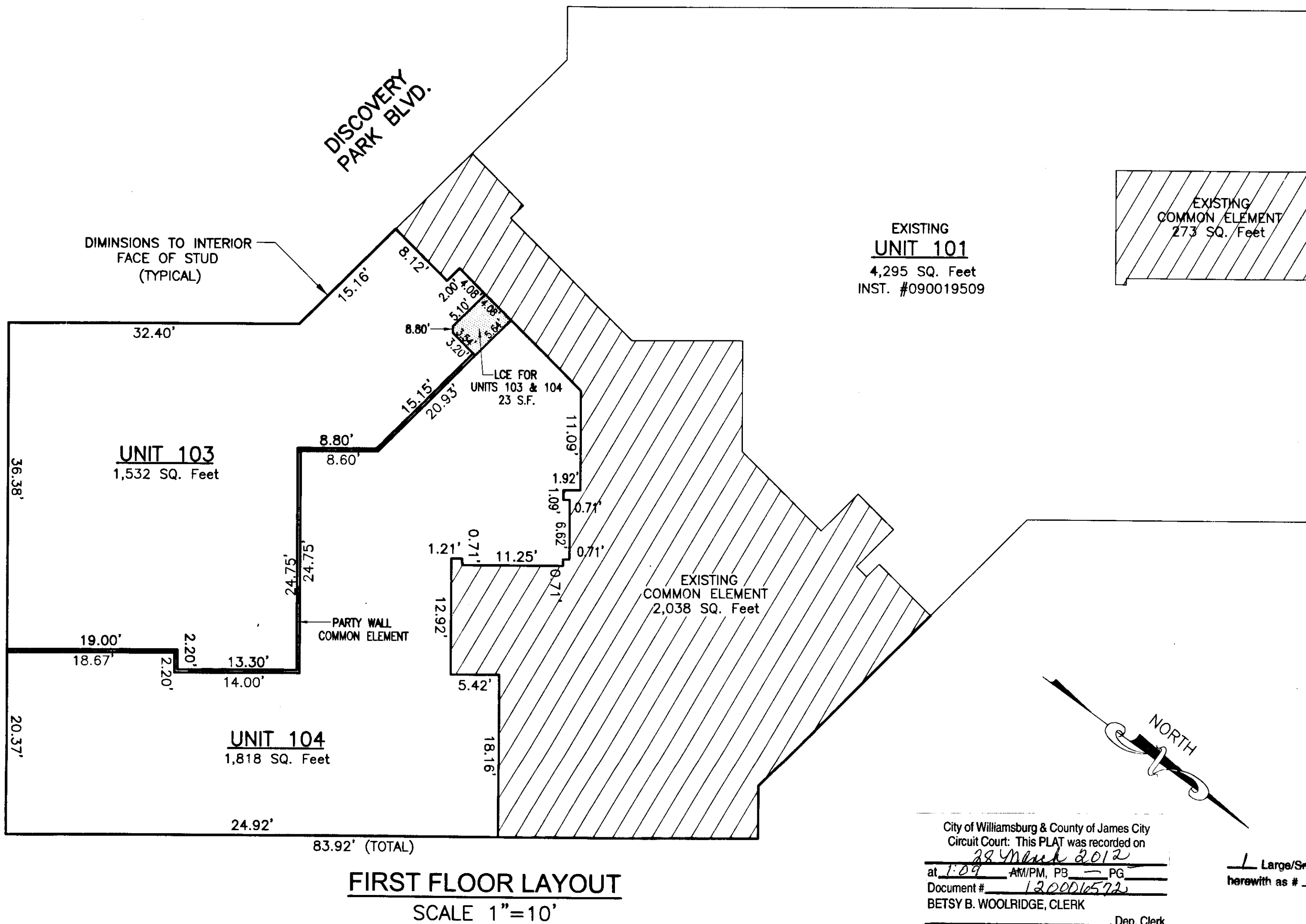


120006572



**A. Unit Boundaries.** A Unit consists of a portion of the Condominium designed and intended for individual ownership and use. The boundary of the individual units are as set out in the Declaration of restrictive covenants [the Declaration] recorded in Instrument #090019509 in the Circuit Court of the County of James City.

**B. Air Conditioning/Heating/Mechanical.** The air conditioning, refrigerating, heating and electrical lines within the Unit, and the heating/air conditioning unit (heat pump), fan units, water and sewer lines, and other apparatus in connection therewith, which serve an individual unit (wherever located), shall be owned by the Unit Owner as a part of the Unit and are not part of the Common Elements.



**SURVEYORS CERTIFICATE**

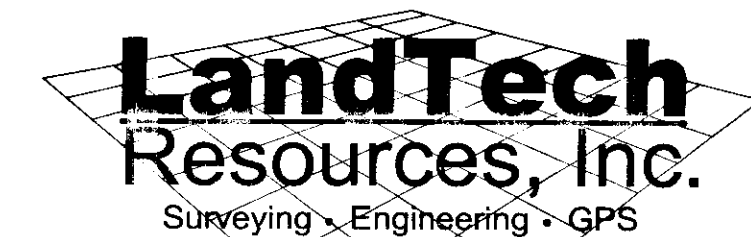
I HEREBY CERTIFY THAT TO THE BEST OF MY KNOWLEDGE OR BELIEF, THIS PLAN IS ACCURATE AND COMPLIES WITH THE PROVISIONS OF SECTION 55-79.58 (B) OF THE CODE OF VIRGINIA 1950 AS AMENDED AND THAT ALL UNITS DEPICTED HEREON HAVE BEEN SUBSTANTIALLY COMPLETED.

*William S. Felts*  
STATE CERTIFIED LAND SURVEYOR

12-19-11  
DATE

REVISED PLAN TO SHOW THE  
DIVISION OF EXISTING UNIT 104 INTO  
UNITS 103 & 104  
**5400 DISCOVERY PARK BOULEVARD  
OFFICE CONDOMINIUM**

BERKELEY DISTRICT, JAMES CITY COUNTY, VIRGINIA  
DATE: 12/19/11 SCALE: 1" = 10' JOB# 07-418



205-E-Bulifonts Blvd., Williamsburg, VA 23188  
Phone: (757) 565-1677 Fax: (757) 565-0782  
web: landtechresources.com

City of Williamsburg & County of James City  
Circuit Court: This PLAT was recorded on  
*28 March 2012*  
at 1:09 AM/PM, PG PG  
Document # *120006572*  
BETSY B. WOOLRIDGE, CLERK  
Dep. Clerk

Large/Small Plat(s) Recorded  
herewith as # *120006572*

