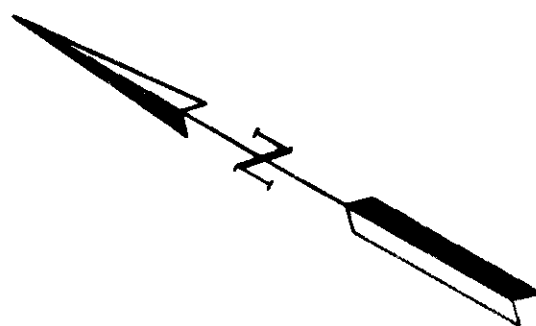


1. THIS PLAT WAS PREPARED WITHOUT THE BENEFIT OF A TITLE REPORT. THIS PROPERTY IS SUBJECT TO EASEMENTS, SERVITUDES, COVENANTS, AND ENCUMBRANCES OF RECORD.
2. THIS PLAT WAS PREPARED FOR EASEMENT PURPOSES ONLY. THIS IS NOT A BOUNDARY SURVEY.
3. THIS PLAT IS BASED ON DEEDS AND PLATS OF RECORD.
4. HORIZONTAL DATUM - JAMES CITY COUNTY GEODETIC CONTROL NETWORK, VIRGINIA STATE PLANE COORDINATE SYSTEM, SOUTH ZONE, NAD83.



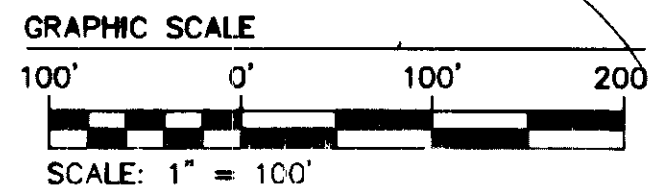
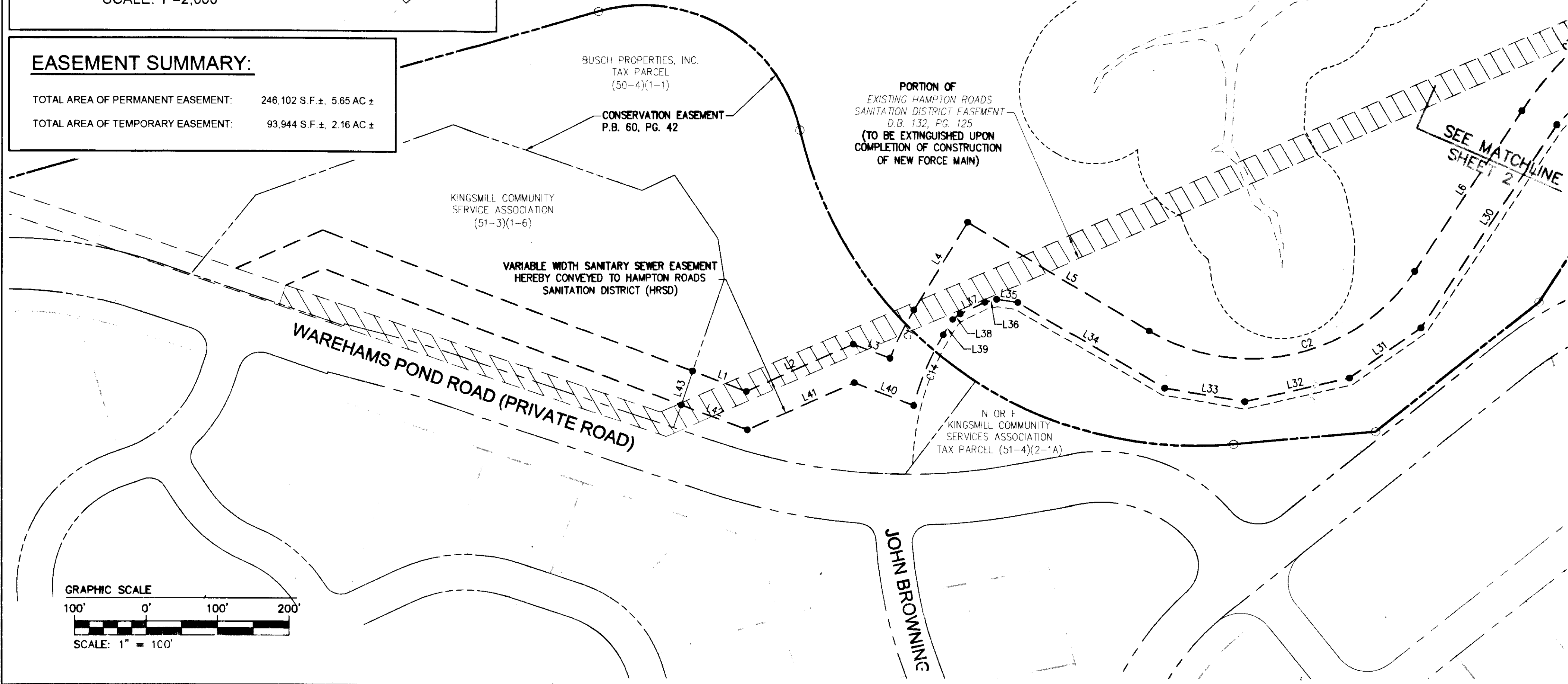
WETLANDS DELINEATED BY KERR ENVIRONMENTAL AND FIELD LOCATED BY AES CONSULTING ENGINEERS ON 11/19/2009

CARTERS GROVE COUNTRY ROAD
BUSCH PROPERTIES, INC.
INSTR. #060029609
P.B. 32, PG. 674

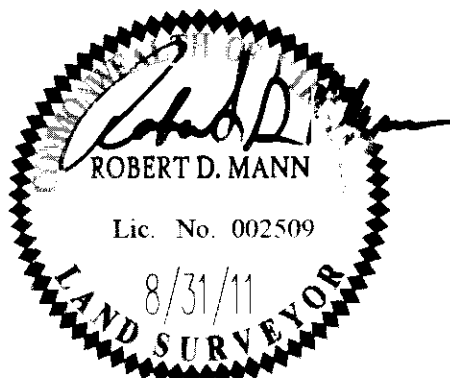
100' RPA BUFFER

EASEMENT SUMMARY:

TOTAL AREA OF PERMANENT EASEMENT: 246,102 S.F. ±, 5.65 AC ±
TOTAL AREA OF TEMPORARY EASEMENT: 93,944 S.F. ±, 2.16 AC ±



City of Williamsburg & County of James City Circuit Court: This PLAT was recorded on at <u>11:41 AM/PM, PG</u> Document # <u>120006334</u> BETSY B. WOOLRIDGE, CLERK <u>Betsy B. Woolridge</u> , Dep. Clerk	Rev. Date	Revised
--	-----------	---------



3 Large/Small Plat(s) Recorded
herewith as # 120006334

AES
CONSULTING ENGINEERS

3246 Old Towne Road, Suite 1
Williamsburg, Virginia 23186
Phone: (757) 253-0040
Fax: (757) 220-8984
www.aesva.com

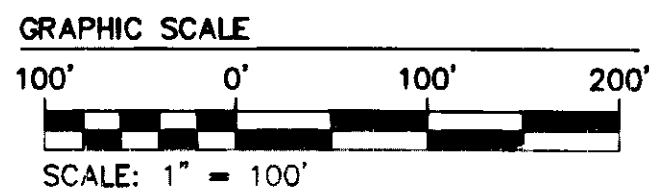
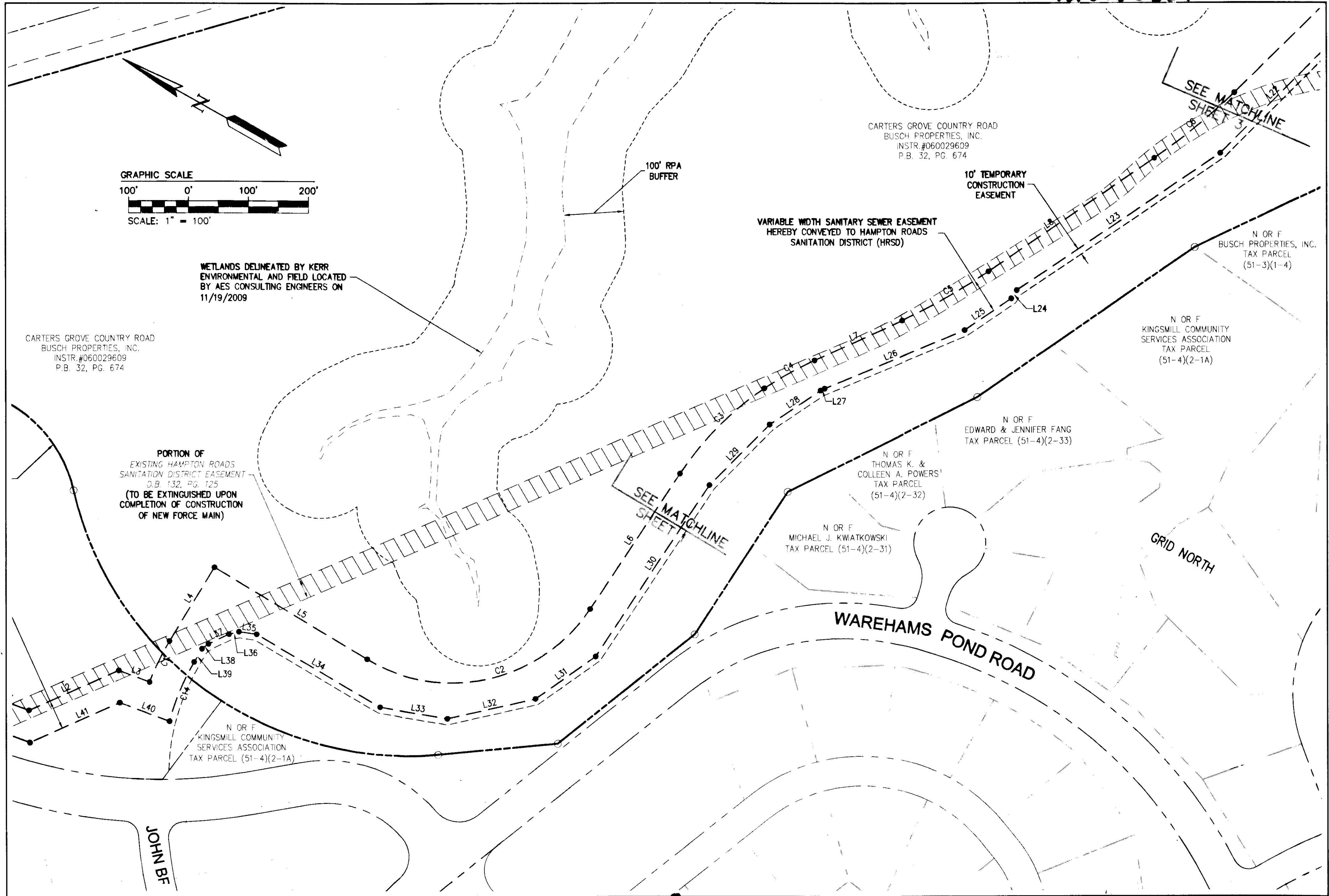
Hampton Roads | Central Virginia | Middle Peninsula

**WILLIAMSBURG INTERCEPTOR FORCE MAIN
CONTRACT A REPLACEMENT**
COMPOSITE PLAT OF EASEMENT TO BE ACQUIRED
FROM BUSCH PROPERTIES INC.
BY HAMPTON ROADS SANITATION DISTRICT
KINGSMILL ON THE JAMES

ROBERTS DISTRICT JAMES CITY COUNTY VIRGINIA

Project Contacts: RDM
Project Number: 7753-28
Scale: 1" = 100'
Date: 8/31/11
Sheet Number
1 OF 3

120006334



WETLANDS DELINEATED BY KERR ENVIRONMENTAL AND FIELD LOCATED BY AES CONSULTING ENGINEERS ON 11/19/2009

CARTERS GROVE COUNTRY ROAD
BUSCH PROPERTIES, INC.
INSTR. #060029609
P.B. 32, PG. 674

PORTION OF EXISTING HAMPTON ROADS SANITATION DISTRICT EASEMENT D.B. 132, PG. 125 (TO BE EXTINGUISHED UPON COMPLETION OF CONSTRUCTION OF NEW FORCE MAIN)

N OR F KINGSMILL COMMUNITY SERVICES ASSOCIATION TAX PARCEL (51-4)(2-1A)

VARIABLE WIDTH SANITARY SEWER EASEMENT HEREBY CONVEYED TO HAMPTON ROADS SANITATION DISTRICT (HRSD)

10' TEMPORARY CONSTRUCTION EASEMENT

CARTERS GROVE COUNTRY ROAD
BUSCH PROPERTIES, INC.
INSTR. #060029609
P.B. 32, PG. 674

N OR F BUSCH PROPERTIES, INC. TAX PARCEL (51-3)(1-4)

N OR F KINGSMILL COMMUNITY SERVICES ASSOCIATION TAX PARCEL (51-4)(2-1A)

N OR F EDWARD & JENNIFER FANG TAX PARCEL (51-4)(2-33)

N OR F THOMAS K. & COLLEEN A. POWERS' TAX PARCEL (51-4)(2-32)

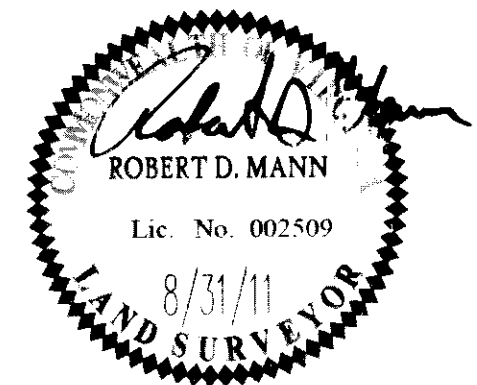
N OR F MICHAEL J. KWIAWKOWSKI TAX PARCEL (51-4)(2-31)

GRID NORTH

WAREHAMS POND ROAD

JOHN BF

Rev.	Date	Revised
City of Williamsburg & County of James City Circuit Court: This PLAT was recorded on <u>21 March 2013</u> at <u>11:41</u> AM/PM, PB PG Document # <u>120006334</u> BETSY B. WOOLRIDGE, CLERK <u>Wendy Strickland</u> , Dep. Clerk		



Large/Small Plat(s) Recorded
herewith as # 120006334

AES
CONSULTING ENGINEERS

5280 Old Towne Road, Suite 1
Williamsburg, Virginia 23188
Phone: (757) 253-0040
Fax: (757) 220-8994
www.aesva.com

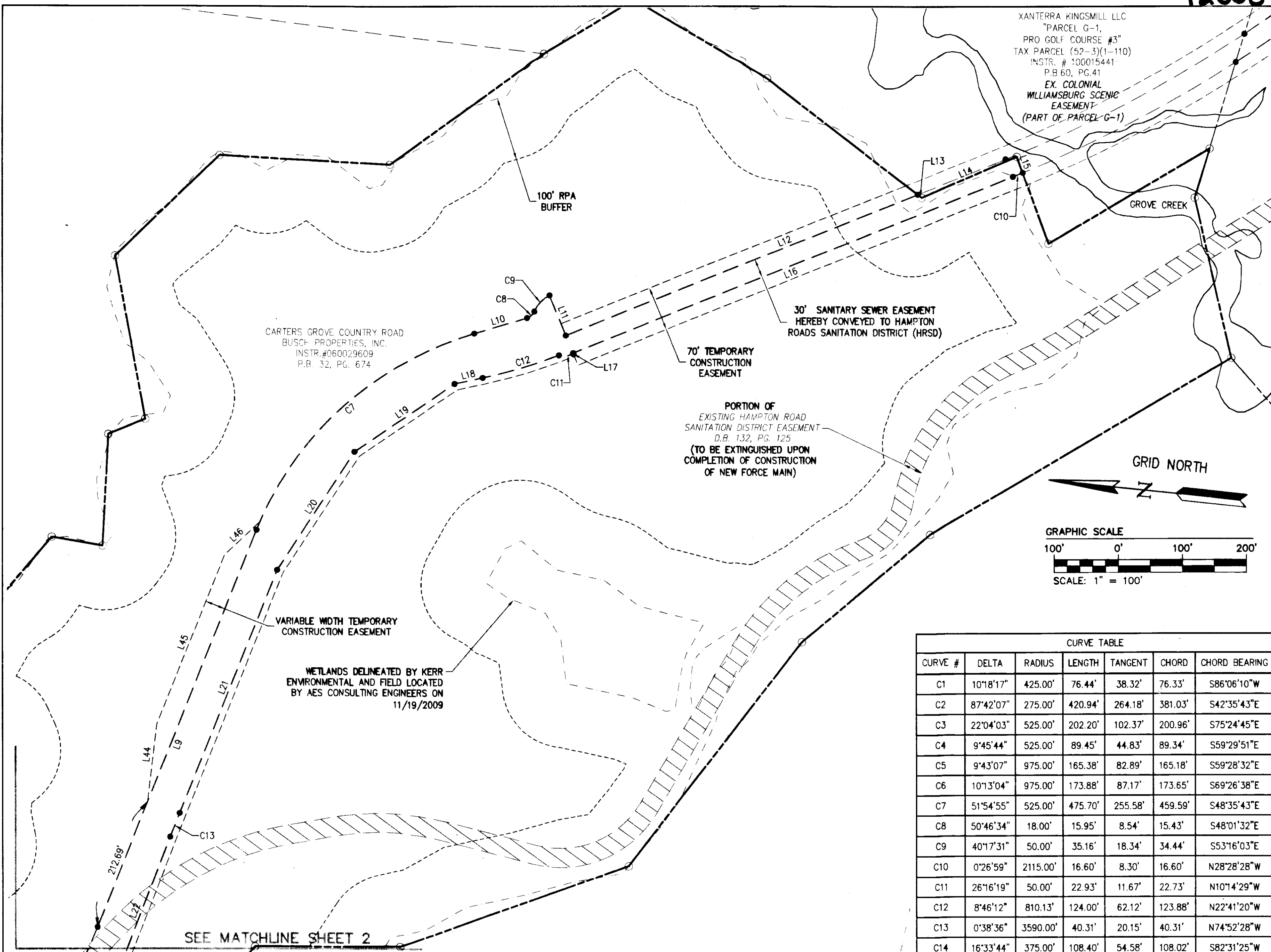
Hampton Roads | Central Virginia | Middle Peninsula

**WILLIAMSBURG INTERCEPTOR FORCE MAIN
CONTRACT A REPLACEMENT**
COMPOSITE PLAT OF EASEMENT TO BE AQUIRED
FROM BUSCH PROPERTIES INC.
BY HAMPTON ROADS SANITATION DISTRICT
KINGSMILL ON THE JAMES

ROBERTS DISTRICT JAMES CITY COUNTY VIRGINIA

Project Contacts:	RDM
Project Number:	7753-28
Scale:	1" = 100'
Date:	8/31/11
Sheet Number	2 OF 3

120006334



XANTERRA KINGSMILL LLC
 "PARCEL G-1,
 PRO GOLF COURSE #3"
 TAX PARCEL (52-3)(1-110)
 INSTR. # 10015441
 P.B. 60, PG. 41
 EX. COLONIAL
 WILLIAMSBURG SCENIC
 EASEMENT
 (PART OF PARCEL G-1)

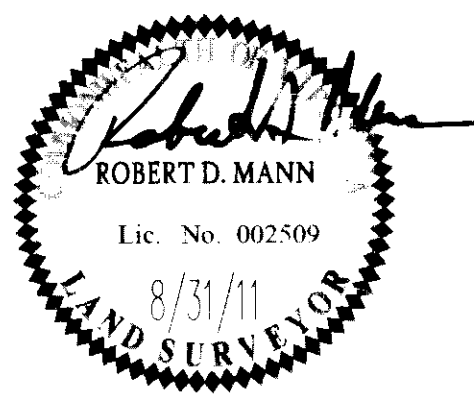
CARTERS GROVE COUNTRY ROAD
 BUSCH PROPERTIES, INC.
 INSTR. # 060029609
 P.B. 32, PG. 674

PORTION OF
 EXISTING HAMPTON ROAD
 SANITATION DISTRICT EASEMENT
 D.B. 132, PG. 125
 (TO BE EXTINGUISHED UPON
 COMPLETION OF CONSTRUCTION
 OF NEW FORCE MAIN)

LINE TABLE		
LINE	BEARING	LENGTH
L1	S9°00'43"E	80.24'
L2	S54°00'43"E	163.99'
L3	S9°00'43"E	55.06'
L4	S88°44'41"E	144.81'
L5	S1°15'19"W	296.93'
L6	S86°26'46"E	272.24'
L7	S54°36'59"E	160.89'
L8	S64°20'06"E	336.12'
L9	S74°33'10"E	671.96'
L10	S22°38'15"E	85.51'
L11	S61°45'02"W	67.78'
L12	S28°14'58"E	591.59'
L13	S31°38'14"W	8.02'
L14	S29°42'55"E	161.25'
L15	S64°01'47"W	27.14'
L16	N28°14'58"W	739.14'
L17	S61°45'02"W	1.86'
L18	N18°18'10"W	44.79'
L19	N40°48'10"W	189.51'
L20	N63°18'10"W	221.46'
L21	N74°33'10"W	411.90'
L22	N75°11'46"W	262.51'
L23	N63°56'46"W	410.54'
L24	N86°26'46"W	16.49'
L25	N63°56'46"W	93.94'
L26	N52°41'46"W	253.16'
L27	N54°51'38"W	7.51'
L28	N63°56'46"W	102.83'
L29	N75°11'46"W	142.73'
L30	N86°26'46"W	344.76'
L31	N65°09'52"W	122.85'
L32	N42°35'43"W	150.24'
L33	N20°10'22"W	113.82'
L34	N0°44'12"E	238.84'
L35	N21°41'43"W	29.89'
L36	N44°11'43"W	17.03'
L37	N55°26'43"W	38.03'
L38	N66°41'43"W	13.42'
L39	N89°11'43"W	25.54'
L40	S9°00'07"E	89.02'
L41	S54°00'43"E	163.99'
L42	S9°00'43"E	98.97'
L43	N78°43'11"E	50.04'
L44	S89°33'10"E	122.13'
L45	S74°33'11"E	286.86'
L46	S49°33'10"E	75.22'

CURVE TABLE						
CURVE #	DELTA	RADIUS	LENGTH	TANGENT	CHORD	CHORD BEARING
C1	10°18'17"	425.00'	76.44'	38.32'	76.33'	S86°06'10"W
C2	87°42'07"	275.00'	420.94'	264.18'	381.03'	S42°35'43"E
C3	22°04'03"	525.00'	202.20'	102.37'	200.96'	S75°24'45"E
C4	9°45'44"	525.00'	89.45'	44.83'	89.34'	S59°29'51"E
C5	9°43'07"	975.00'	165.38'	82.89'	165.18'	S59°28'32"E
C6	10°13'04"	975.00'	173.88'	87.17'	173.65'	S69°26'38"E
C7	51°54'55"	525.00'	475.70'	255.58'	459.59'	S48°35'43"E
C8	50°46'34"	18.00'	15.95'	8.54'	15.43'	S48°01'32"E
C9	40°17'31"	50.00'	35.16'	18.34'	34.44'	S53°16'03"E
C10	0°26'59"	2115.00'	16.60'	8.30'	16.60'	N28°28'28"W
C11	26°16'19"	50.00'	22.93'	11.67'	22.73'	N10°14'29"W
C12	8°46'12"	810.13'	124.00'	62.12'	123.88'	N22°41'20"W
C13	0°38'36"	3590.00'	40.31'	20.15'	40.31'	N74°52'28"W
C14	16°33'44"	375.00'	108.40'	54.58'	108.02'	S82°31'25"W

City of Williamsburg & County of James City
 Circuit Court: This PLAT was recorded on
26 March 2012
 at 11:41 AM/PM, PB PG
 Document # 120006334
 BETSY B. WOOLRIDGE, CLERK
Betsy Woolridge, Dep. Clerk



AES
 CONSULTING ENGINEERS
 5248 Old Towne Road, Suite 1
 Williamsburg, Virginia 23188
 Phone: (757) 253-0040
 Fax: (757) 220-8994
 www.aesva.com

**WILLIAMSBURG INTERCEPTOR FORCE MAIN
 CONTRACT A REPLACEMENT**
 COMPOSITE PLAT OF EASEMENT TO BE ACQUIRED
 FROM BUSCH PROPERTIES INC.
 BY HAMPTON ROADS SANITATION DISTRICT
 KINGSMILL ON THE JAMES

ROBERTS DISTRICT JAMES CITY COUNTY VIRGINIA

Project Contacts: RDM
 Project Number: 7753-28
 Scale: 1" = 100' Date: 8/31/11
 Sheet Number
3 OF 3

SEE MATCHLINE SHEET 2

