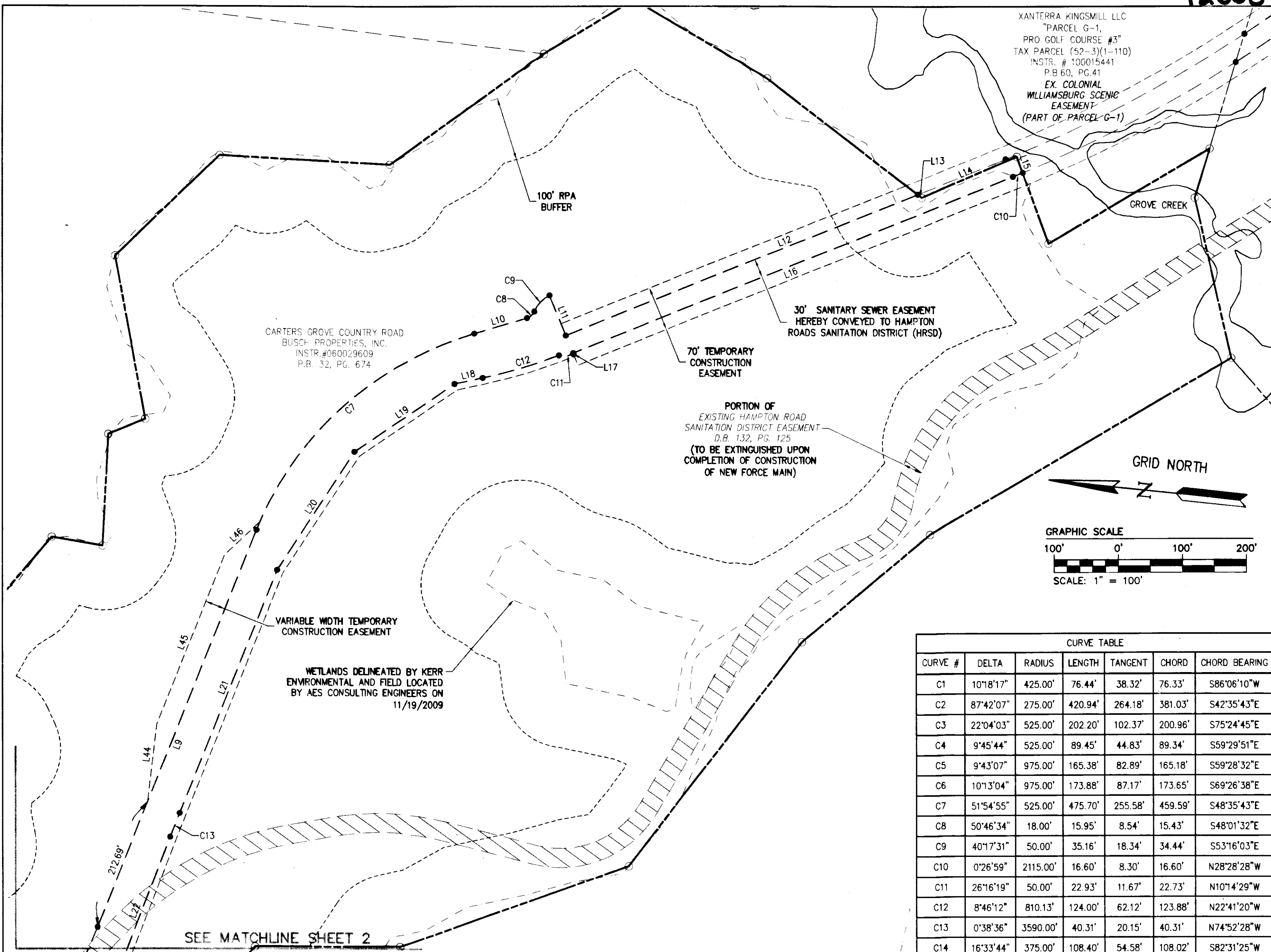


120006334



XANTERRA KINGSMILL LLC  
 "PARCEL G-1,  
 PRO GOLF COURSE #3"  
 TAX PARCEL (52-3)(1-110)  
 INSTR. # 10015441  
 P.B. 60, PG. 41  
 EX. COLONIAL  
 WILLIAMSBURG SCENIC  
 EASEMENT  
 (PART OF PARCEL G-1)

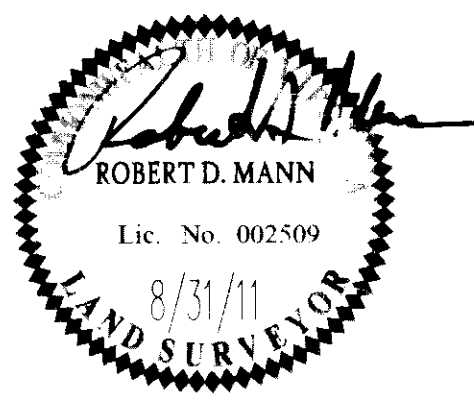
CARTERS GROVE COUNTRY ROAD  
 BUSCH PROPERTIES, INC.  
 INSTR. # 060029609  
 P.B. 32, PG. 674

PORTION OF  
 EXISTING HAMPTON ROAD  
 SANITATION DISTRICT EASEMENT  
 D.B. 132, PG. 125  
 (TO BE EXTINGUISHED UPON  
 COMPLETION OF CONSTRUCTION  
 OF NEW FORCE MAIN)

LINE TABLE		
LINE	BEARING	LENGTH
L1	S9°00'43"E	80.24'
L2	S54°00'43"E	163.99'
L3	S9°00'43"E	55.06'
L4	S88°44'41"E	144.81'
L5	S1°15'19"W	296.93'
L6	S86°26'46"E	272.24'
L7	S54°36'59"E	160.89'
L8	S64°20'06"E	336.12'
L9	S74°33'10"E	671.96'
L10	S22°38'15"E	85.51'
L11	S61°45'02"W	67.78'
L12	S28°14'58"E	591.59'
L13	S31°38'14"W	8.02'
L14	S29°42'55"E	161.25'
L15	S64°01'47"W	27.14'
L16	N28°14'58"W	739.14'
L17	S61°45'02"W	1.86'
L18	N18°18'10"W	44.79'
L19	N40°48'10"W	189.51'
L20	N63°18'10"W	221.46'
L21	N74°33'10"W	411.90'
L22	N75°11'46"W	262.51'
L23	N63°56'46"W	410.54'
L24	N86°26'46"W	16.49'
L25	N63°56'46"W	93.94'
L26	N52°41'46"W	253.16'
L27	N54°51'38"W	7.51'
L28	N63°56'46"W	102.83'
L29	N75°11'46"W	142.73'
L30	N86°26'46"W	344.76'
L31	N65°09'52"W	122.85'
L32	N42°35'43"W	150.24'
L33	N20°10'22"W	113.82'
L34	N0°44'12"E	238.84'
L35	N21°41'43"W	29.89'
L36	N44°11'43"W	17.03'
L37	N55°26'43"W	38.03'
L38	N66°41'43"W	13.42'
L39	N89°11'43"W	25.54'
L40	S9°00'07"E	89.02'
L41	S54°00'43"E	163.99'
L42	S9°00'43"E	98.97'
L43	N78°43'11"E	50.04'
L44	S89°33'10"E	122.13'
L45	S74°33'11"E	286.86'
L46	S49°33'10"E	75.22'

CURVE TABLE						
CURVE #	DELTA	RADIUS	LENGTH	TANGENT	CHORD	CHORD BEARING
C1	10°18'17"	425.00'	76.44'	38.32'	76.33'	S86°06'10"W
C2	87°42'07"	275.00'	420.94'	264.18'	381.03'	S42°35'43"E
C3	22°04'03"	525.00'	202.20'	102.37'	200.96'	S75°24'45"E
C4	9°45'44"	525.00'	89.45'	44.83'	89.34'	S59°29'51"E
C5	9°43'07"	975.00'	165.38'	82.89'	165.18'	S59°28'32"E
C6	10°13'04"	975.00'	173.88'	87.17'	173.65'	S69°26'38"E
C7	51°54'55"	525.00'	475.70'	255.58'	459.59'	S48°35'43"E
C8	50°46'34"	18.00'	15.95'	8.54'	15.43'	S48°01'32"E
C9	40°17'31"	50.00'	35.16'	18.34'	34.44'	S53°16'03"E
C10	0°26'59"	2115.00'	16.60'	8.30'	16.60'	N28°28'28"W
C11	26°16'19"	50.00'	22.93'	11.67'	22.73'	N10°14'29"W
C12	8°46'12"	810.13'	124.00'	62.12'	123.88'	N22°41'20"W
C13	0°38'36"	3590.00'	40.31'	20.15'	40.31'	N74°52'28"W
C14	16°33'44"	375.00'	108.40'	54.58'	108.02'	S82°31'25"W

City of Williamsburg & County of James City  
 Circuit Court: This PLAT was recorded on  
26 March 2012  
 at 11:41 AM/PM, PB PG  
 Document # 120006334  
 BETSY B. WOOLRIDGE, CLERK  
*Betsy Woolridge*, Dep. Clerk



**NES**  
 CONSULTING ENGINEERS  
 5248 Old Towne Road, Suite 1  
 Williamsburg, Virginia 23188  
 Phone: (757) 253-0040  
 Fax: (757) 220-8994  
 www.aesva.com

**WILLIAMSBURG INTERCEPTOR FORCE MAIN  
 CONTRACT A REPLACEMENT**  
 COMPOSITE PLAT OF EASEMENT TO BE ACQUIRED  
 FROM BUSCH PROPERTIES INC.  
 BY HAMPTON ROADS SANITATION DISTRICT  
 KINGSMILL ON THE JAMES

ROBERTS DISTRICT      JAMES CITY COUNTY      VIRGINIA

Project Contacts: RDM  
 Project Number: 7753-28  
 Scale: 1" = 100'      Date: 8/31/11  
 Sheet Number  
**3 OF 3**

SEE MATCHLINE SHEET 2

