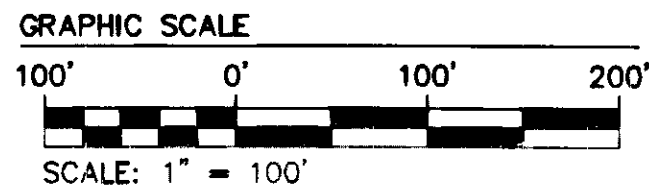
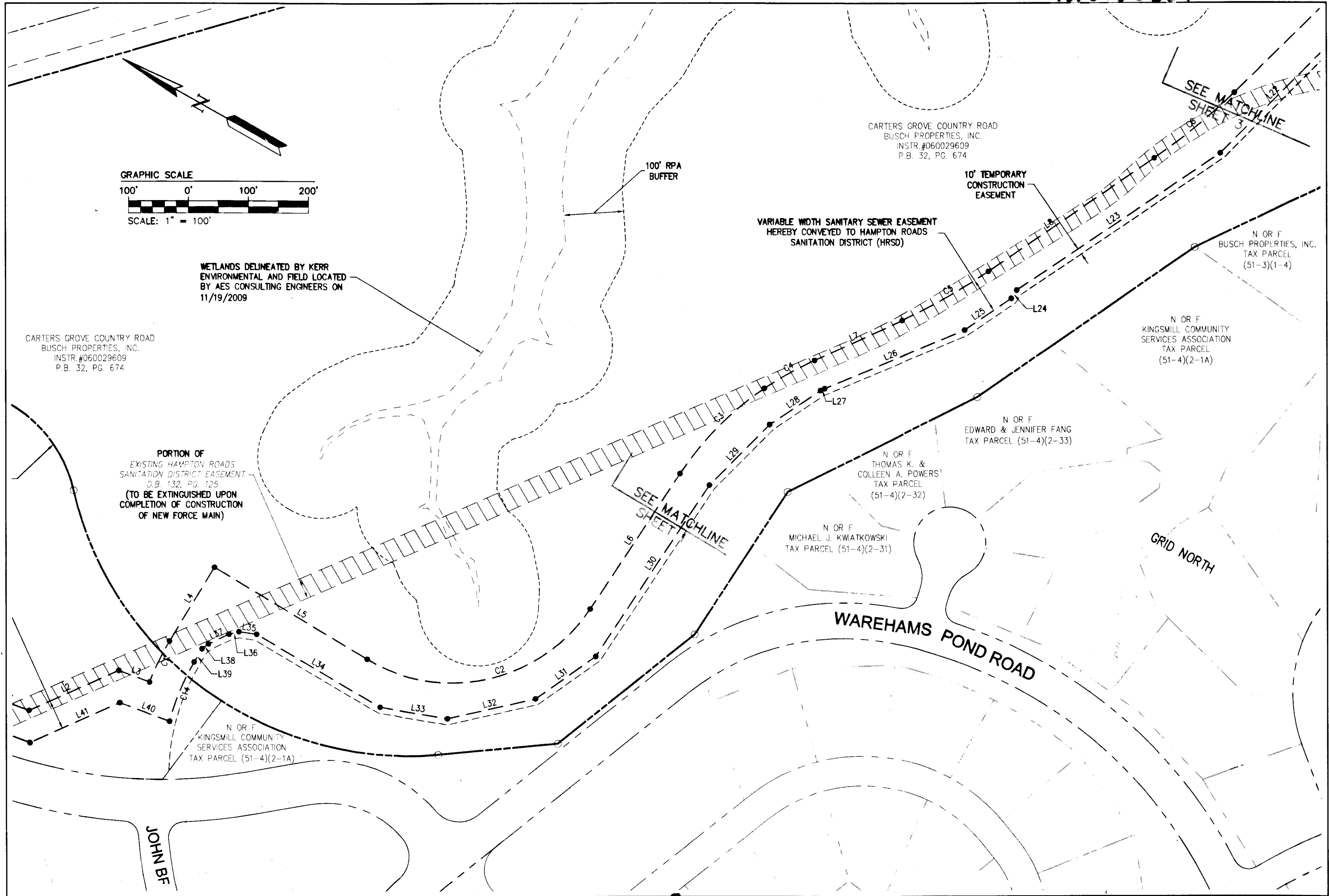


120006334



WETLANDS DELINEATED BY KERR ENVIRONMENTAL AND FIELD LOCATED BY AES CONSULTING ENGINEERS ON 11/19/2009

CARTERS GROVE COUNTRY ROAD  
BUSCH PROPERTIES, INC.  
INSTR. #060029609  
P.B. 32, PG. 674

PORTION OF EXISTING HAMPTON ROADS SANITATION DISTRICT EASEMENT D.B. 132, PG. 125 (TO BE EXTINGUISHED UPON COMPLETION OF CONSTRUCTION OF NEW FORCE MAIN)

N OR F KINGSMILL COMMUNITY SERVICES ASSOCIATION TAX PARCEL (51-4)(2-1A)

VARIABLE WIDTH SANITARY SEWER EASEMENT HEREBY CONVEYED TO HAMPTON ROADS SANITATION DISTRICT (HRSD)

10' TEMPORARY CONSTRUCTION EASEMENT

CARTERS GROVE COUNTRY ROAD  
BUSCH PROPERTIES, INC.  
INSTR. #060029609  
P.B. 32, PG. 674

N OR F BUSCH PROPERTIES, INC. TAX PARCEL (51-3)(1-4)

N OR F KINGSMILL COMMUNITY SERVICES ASSOCIATION TAX PARCEL (51-4)(2-1A)

N OR F EDWARD & JENNIFER FANG TAX PARCEL (51-4)(2-33)

N OR F THOMAS K. & COLLEEN A. POWERS' TAX PARCEL (51-4)(2-32)

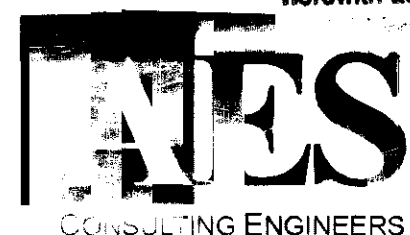
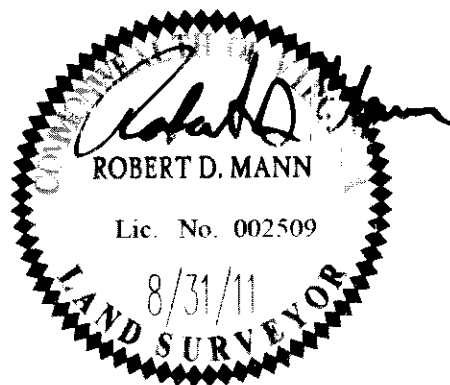
N OR F MICHAEL J. KWIAWKOWSKI TAX PARCEL (51-4)(2-31)

GRID NORTH

WAREHAMS POND ROAD

JOHN BF

Rev.	Date	Revised
City of Williamsburg & County of James City Circuit Court: This PLAT was recorded on <u>21 March 2013</u> at <u>11:41</u> AM/PM, PB PG Document # <u>120006334</u> BETSY B. WOOLRIDGE, CLERK <u>Woolridge</u> , Dep. Clerk		



Hampton Roads | Central Virginia | Middle Peninsula

3 Large/Small Plat(s) Recorded  
herewith as # 120006334

5288 Old Towne Road, Suite 1  
Williamsburg, Virginia 23188  
Phone: (757) 253-0040  
Fax: (757) 220-8994  
www.aesva.com

WILLIAMSBURG INTERCEPTOR FORCE MAIN  
CONTRACT A REPLACEMENT  
COMPOSITE PLAT OF EASEMENT TO BE AQUIRED  
FROM BUSCH PROPERTIES INC.  
BY HAMPTON ROADS SANITATION DISTRICT  
KINGSMILL ON THE JAMES

ROBERTS DISTRICT JAMES CITY COUNTY VIRGINIA

Project Contacts: RDM  
Project Number: 7753-28  
Scale: 1" = 100' Date: 8/31/11  
Sheet Number

2 OF 3