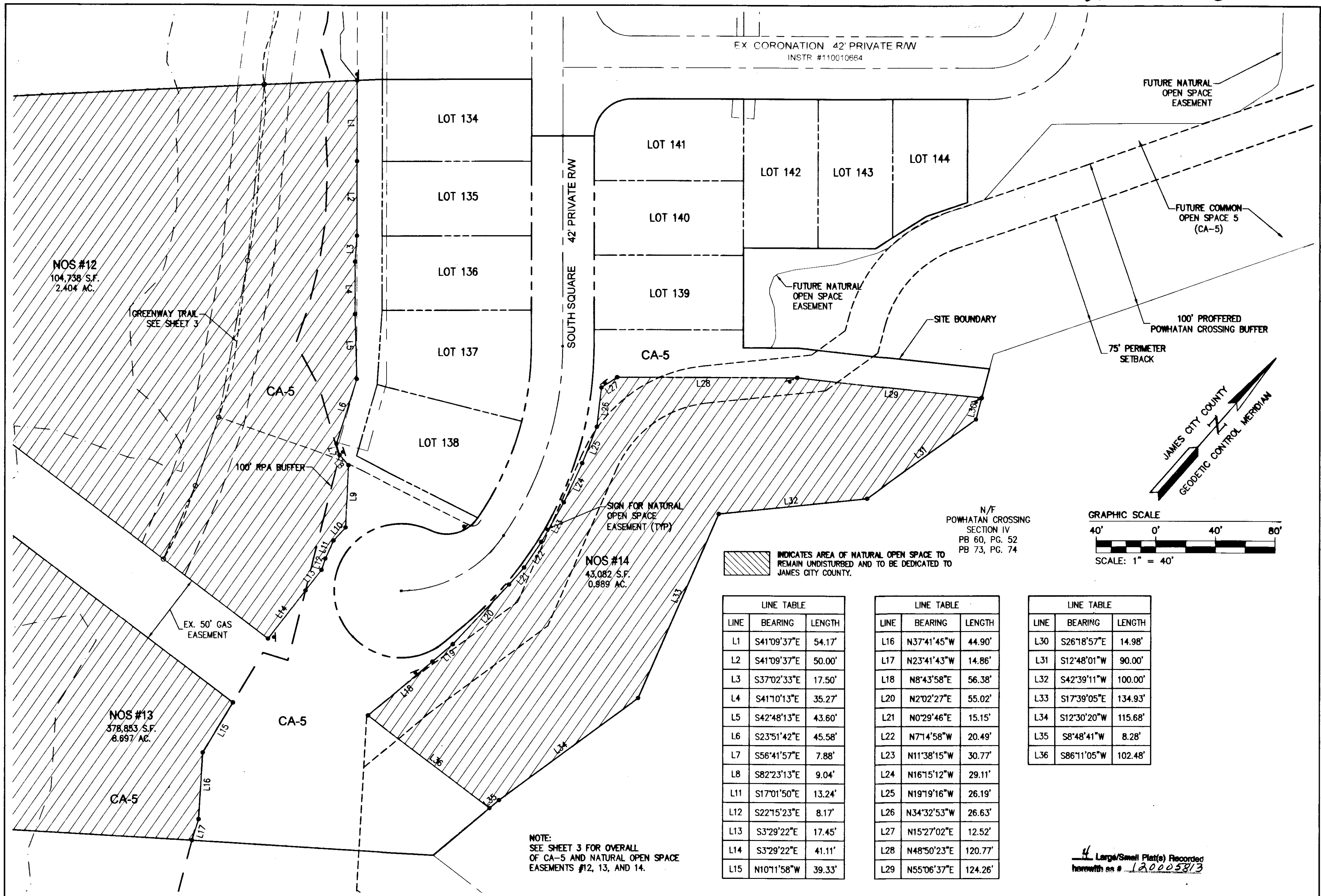


120005813



LINE	BEARING	LENGTH
L1	S41°09'37"E	54.17'
L2	S41°09'37"E	50.00'
L3	S37°02'33"E	17.50'
L4	S41°10'13"E	35.27'
L5	S42°48'13"E	43.60'
L6	S23°51'42"E	45.58'
L7	S56°41'57"E	7.88'
L8	S82°23'13"E	9.04'
L11	S17°01'50"E	13.24'
L12	S22°15'23"E	8.17'
L13	S3°29'22"E	17.45'
L14	S3°29'22"E	41.11'
L15	N10°11'58"W	39.33'

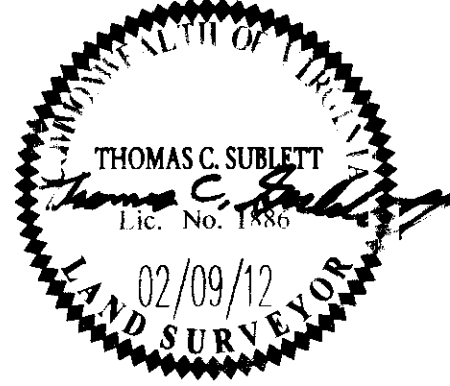
LINE	BEARING	LENGTH
L16	N37°41'45"W	44.90'
L17	N23°41'43"W	14.86'
L18	N8°43'58"E	56.38'
L20	N2°02'27"E	55.02'
L21	N0°29'46"E	15.15'
L22	N7°14'58"W	20.49'
L23	N11°38'15"W	30.77'
L24	N16°15'12"W	29.11'
L25	N19°19'16"W	26.19'
L26	N34°32'53"W	26.63'
L27	N15°27'02"E	12.52'
L28	N48°50'23"E	120.77'
L29	N55°06'37"E	124.26'

LINE	BEARING	LENGTH
L30	S26°18'57"E	14.98'
L31	S12°48'01"W	90.00'
L32	S42°39'11"W	100.00'
L33	S17°39'05"E	134.93'
L34	S12°30'20"W	115.68'
L35	S8°48'41"W	8.28'
L36	S86°11'05"W	102.48'

4 Large/Small Plat(s) Recorded
herewith as # 120005813

1	02/09/12		RMS
Rev	Date	Description	Revised By

City of Williamsburg & County of James City
Circuit Court: This PLAT was recorded on
16 March 2012
at 11:51 AM/PM, PB PG
Document # 120005813
BETSY B. WOOLRIDGE, CLERK
Wanda Adkins, Dep. Clerk



TCS
CONSULTING ENGINEERS
5248 Olde Towne Road, Suite 1
Williamsburg, Virginia 23188
Phone: (757) 253-0040
Fax: (757) 220-8994
www.aesva.com

Hampton Roads | Central Virginia | Middle Peninsula

PLAT OF SUBDIVISION
THE SETTLEMENT AT POWHATAN CREEK
PHASE II
LOTS 134-144, 183-185 AND CA-5

BERKELEY DISTRICT JAMES CITY COUNTY VIRGINIA

Project Contacts: TCS
Project Number: 9254-08
Scale: 1"=40' Date: 10/28/11
Sheet Number
4 of 4