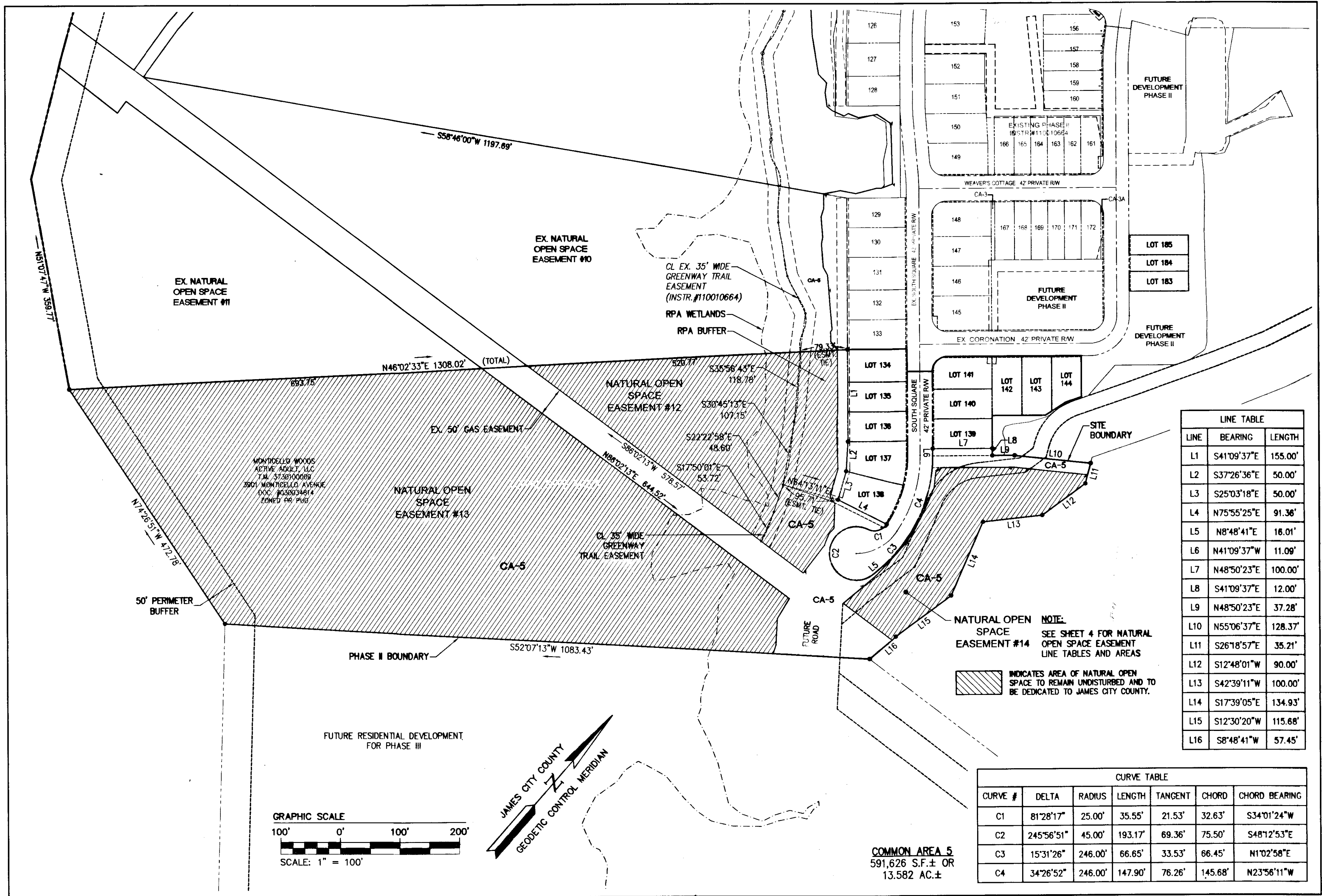


120005813



LINE TABLE		
LINE	BEARING	LENGTH
L1	S41°09'37"E	155.00'
L2	S37°26'36"E	50.00'
L3	S25°03'18"E	50.00'
L4	N75°55'25"E	91.36'
L5	N8°48'41"E	16.01'
L6	N41°09'37"W	11.09'
L7	N48°50'23"E	100.00'
L8	S41°09'37"E	12.00'
L9	N48°50'23"E	37.28'
L10	N55°06'37"E	128.37'
L11	S26°18'57"E	35.21'
L12	S12°48'01"W	90.00'
L13	S42°39'11"W	100.00'
L14	S17°39'05"E	134.93'
L15	S12°30'20"W	115.68'
L16	S8°48'41"W	57.45'

CURVE TABLE						
CURVE #	DELTA	RADIUS	LENGTH	TANGENT	CHORD	CHORD BEARING
C1	81°28'17"	25.00'	35.55'	21.53'	32.63'	S34°01'24"W
C2	245°56'51"	45.00'	193.17'	69.36'	75.50'	S48°12'53"E
C3	15°31'26"	246.00'	66.65'	33.53'	66.45'	N1°02'58"E
C4	34°26'52"	246.00'	147.90'	76.26'	145.68'	N23°56'11"W

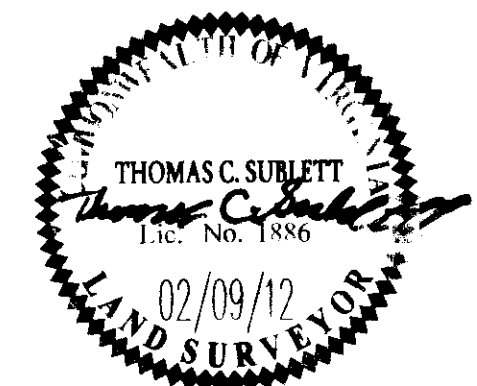
COMMON AREA 5
591,626 S.F. ± OR
13.582 AC. ±

NOTE:
SEE SHEET 4 FOR NATURAL
OPEN SPACE EASEMENT
LINE TABLES AND AREAS

INDICATES AREA OF NATURAL OPEN
SPACE TO REMAIN UNDISTURBED AND TO
BE DEDICATED TO JAMES CITY COUNTY.

1	02/09/12	REVISED PER COUNTY COMMENTS	RMS
Rev.	Date	Description	Revised By

City of Williamsburg & County of James City
Circuit Court: This PLAT was recorded on
16/08/2012
at 11:51 AM/PM, PB 3012 PG
Document # 120005813
BETSY B. WOOLRIDGE, CLERK
Christina A. Haddock, Dep. Clerk



AES
CONSULTING ENGINEERS
5248 Old Towne Road, Suite 1
Williamsburg, Virginia 23188
Phone: (757) 253-0040
Fax: (757) 220-8994
www.aesva.com

PLAT OF SUBDIVISION
THE SETTLEMENT AT POWHATAN CREEK
PHASE II
LOTS 134-144, 183-185 AND CA-5
BERKELEY DISTRICT JAMES CITY COUNTY VIRGINIA

Project Contacts: TCS
Project Number: 9254-08
Scale: 1"=100'
Date: 10/28/11
Sheet Number:
3 of 4