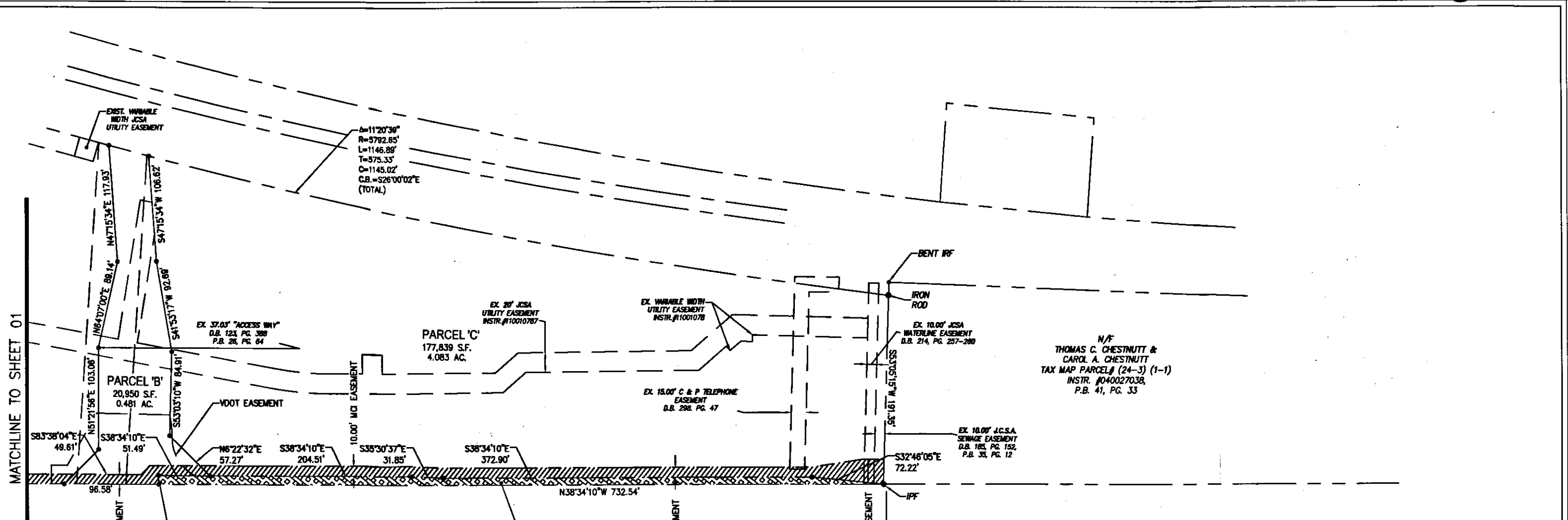


120004188



MATCHLINE TO SHEET 01
 U.S. ROUTE #60 - RICHMOND ROAD
 (VARIABLE WIDTH R/W)
 PROJ. 0080-047-101, R/W 203
 0080-047-101, C-303, PE-101
 RIGHT-OF-WAY HEREBY DEDICATED TO VDOT
 AREA=5,548 S.F. / 0.128 AC.
 2.885'± TO C/L OF LIGHTFOOT ROAD

WILLIAMSBURG POTTERY - RICHMOND ROAD
 PROJECT NUMBER 40003-003


 MCImetro ACCESS TRANSMISSION SERVICES OF VIRGINIA, INC.
 2400 NORTH GLENVILLE DRIVE
 RICHARDSON, TX 75082

PLAT SHOWING
 MCI EASEMENT
 THROUGH
WILLIAMSBURG POTTERY FACTORY, INC
 TAX MAP PARCEL #(24-3)(1-31)
 PROPERTY ADDRESS: #6692 RICHMOND ROAD
 D.B. 324, PG. 810
 D.B. 298, PG. 662
 D.B. 368, PG. 704
 P.B. 46, PG. 98

STONEHOUSE DISTRICT: JAMES CITY COUNTY, VA SHEET 2 OF 2
 SCALE: 1"=100' | DATE: 10/3/11 | DRAWN BY: S.LUPO

JAMES CITY COUNTY
 GEODETIC CONTROL MERIDIAN

EASEMENT AREA
 10'-25.35' MCI EASEMENT

9024 SQ. FT.

City of Williamsburg & County of James City
 Circuit Court: This PLAT was recorded on
16 February 2012
 at 11:03 AM/PM, PB 6 PG 1
 Document # 120004188
 BETSY B. WOOLRIDGE, CLERK
 by Clarecia H. Brinkholz, Dep. Clerk

EXHIBIT A
 2 Large/Small Plat(s) Recorded
 herewith as # 120004188

