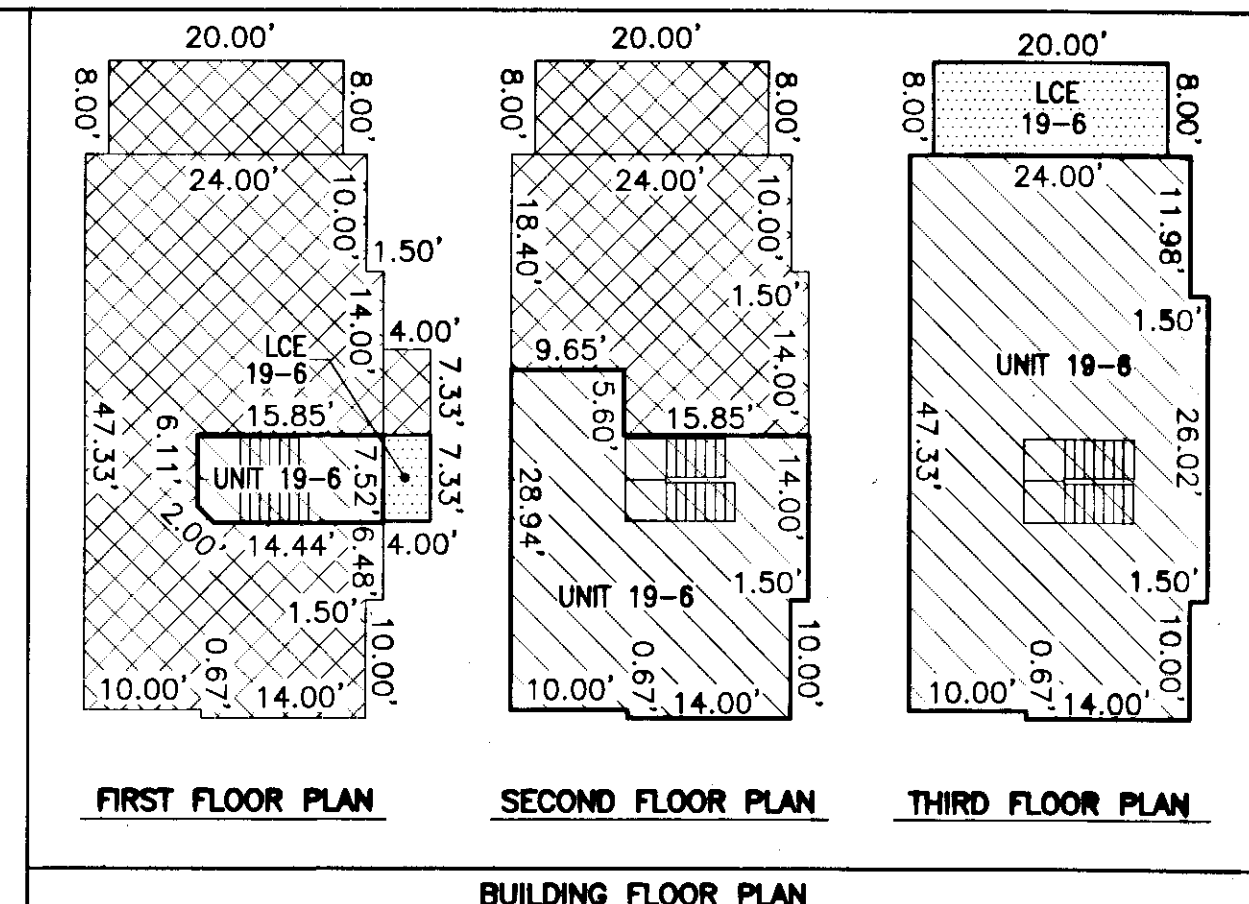
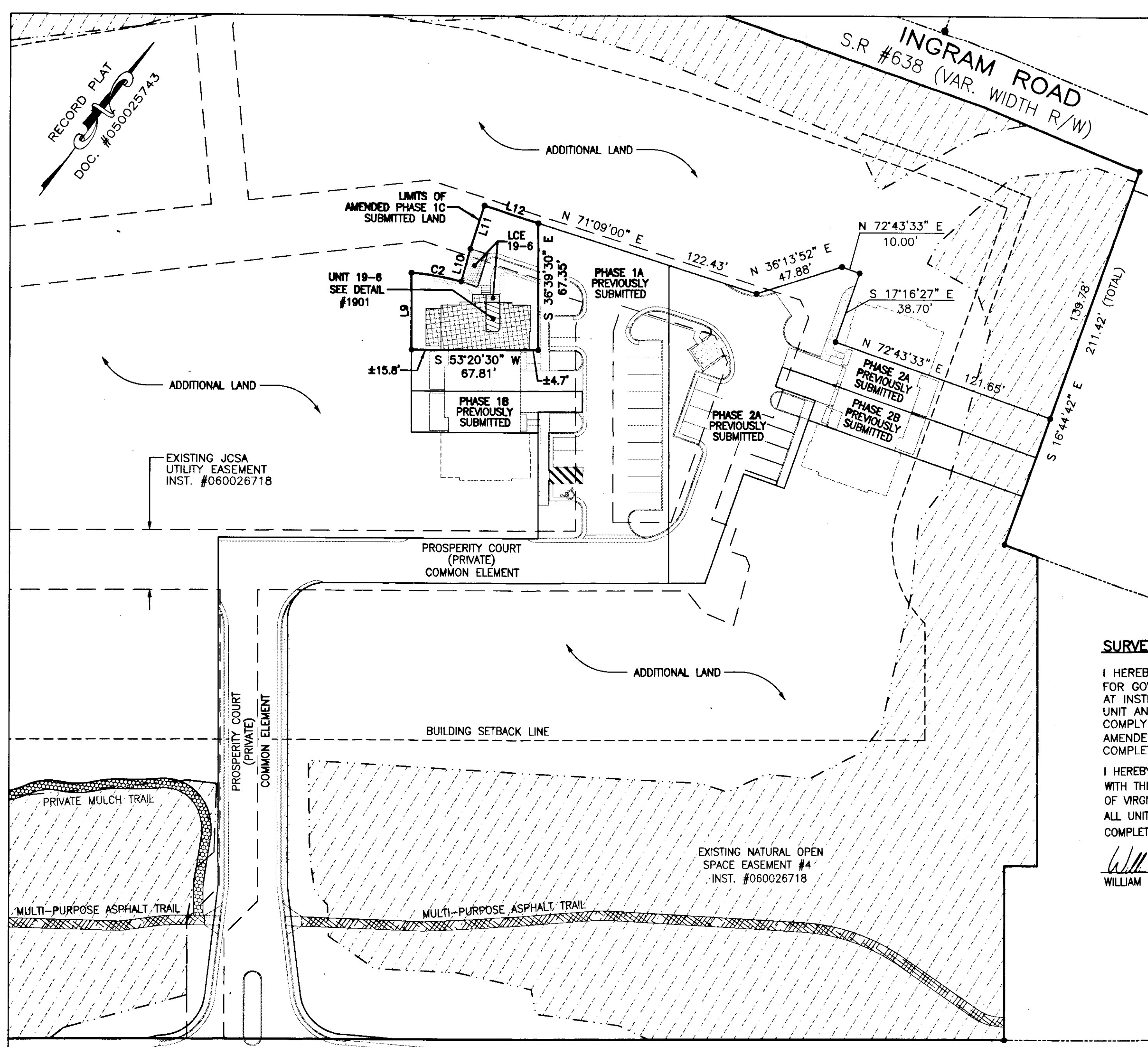


120001972

RECORD PLAT  
DOC. #050025743



- INDICATES ADDITIONAL LAND
  - INDICATES LIMITED COMMON ELEMENT
  - INDICATES UNIT AREA
  - INDICATES COMMON ELEMENT
- \*LCE=LIMITED COMMON ELEMENT

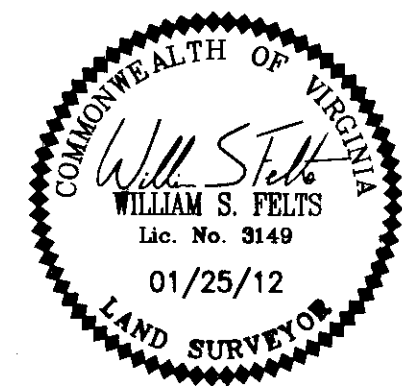
**SURVEYORS CERTIFICATE**

I HEREBY CERTIFY THAT THE PLAN PREVIOUSLY RECORDED FOR GOVERNOR'S GROVE AT FIVE FORKS, A CONDOMINIUM AT INSTRUMENT 090022560 ACCURATELY DEPICTS THE UNIT AND RELATED IMPROVEMENTS SHOWN AND THAT THEY COMPLY WITH THE CODE OF VIRGINIA OF 1950, AS AMENDED 55-79.58(B) AND ARE SUBSTANTIALLY COMPLETE.

I HEREBY CERTIFY THAT THIS PLAT IS ACCURATE AND COMPLIES WITH THE PROVISIONS OF SECTION 55-79.58 (A) OF THE CODE OF VIRGINIA 1950 AS AMENDED AND I FURTHER CERTIFY THAT ALL UNITS DEPICTED HEREON HAVE BEEN SUBSTANTIALLY COMPLETE.

*William S. Felts*  
WILLIAM S. FELTS LIC. #3149

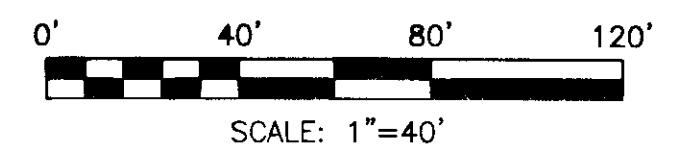
01/25/12  
DATE



AMENDED PLAT OF  
PHASE 1C  
GOVERNOR'S GROVE AT FIVE FORKS  
A CONDOMINIUM  
LOCATED IN THE BERKELEY DISTRICT  
JAMES CITY COUNTY, VIRGINIA

DATE: 01/25/12 SCALE: 1" = 40' JOB# 06-460  
SHEET 2 OF 2

JOHN TYLER HIGHWAY  
STATE ROUTE #5  
(VARIABLE WIDTH PUBLIC R/W)



UNIT NUMBER	UNIT TYPE	STREET ADDRESS	PARCEL ID#
19-6	B-(R)	#1901 PROSPERITY CT	4622101901

2 Large/Small Plat(s) Recorded  
herewith as # 120001972  
City of Williamsburg & County of James City  
Circuit Court: This PLAT was recorded on  
at 11:42 AM/PM, PG -  
Document # 120001972  
BETSY B. WOOLRIDGE, CLERK  
Dep. Clerk

**LandTech Resources, Inc.**  
Surveying • Engineering • GPS  
205-E Bulifants Blvd. Williamsburg, VA 23188  
Phone: (757) 565-1677 Fax: (757) 565-0782  
web: landtechresources.com