

120000845

PLANS OF 430 McLAWS
McLAW PROFESSIONAL CENTER, A CONDOMINIUM
ROBERTS DISTRICT, JAMES CITY COUNTY, VIRGINIA
DATE: 12-19-2011 SCALE: 1" = 10' JOB# 07-340
SHEET 1 OF 2

LandTech Resources, Inc.
Surveying • Engineering • GPS
205-E-Bulifants Blvd., Williamsburg, VA 23188
Phone: (757) 565-1677 Fax: (757) 565-0782
web: landtechresources.com

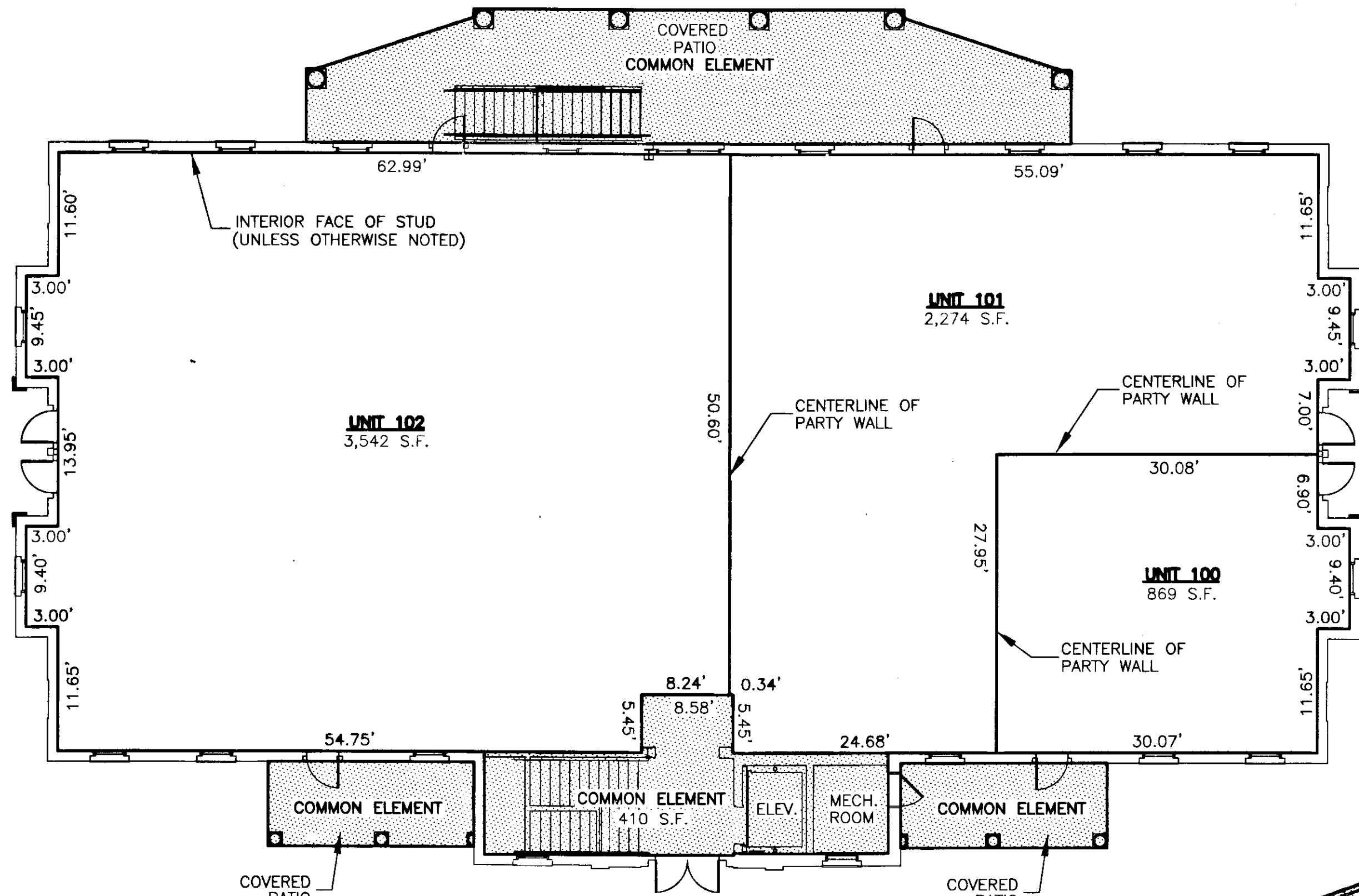
City of Williamsburg & County of James City
Circuit Court: This PLAT was recorded on
1-17-2012
at 9:33 AM/PM, PG. -
Document # 120000845
BETSY B. WOOLRIDGE, CLERK
B. O. Holloman, Dep. Clerk

3 Large/Small Plat(s) Recorded
herewith as # 120000845

NOTE:

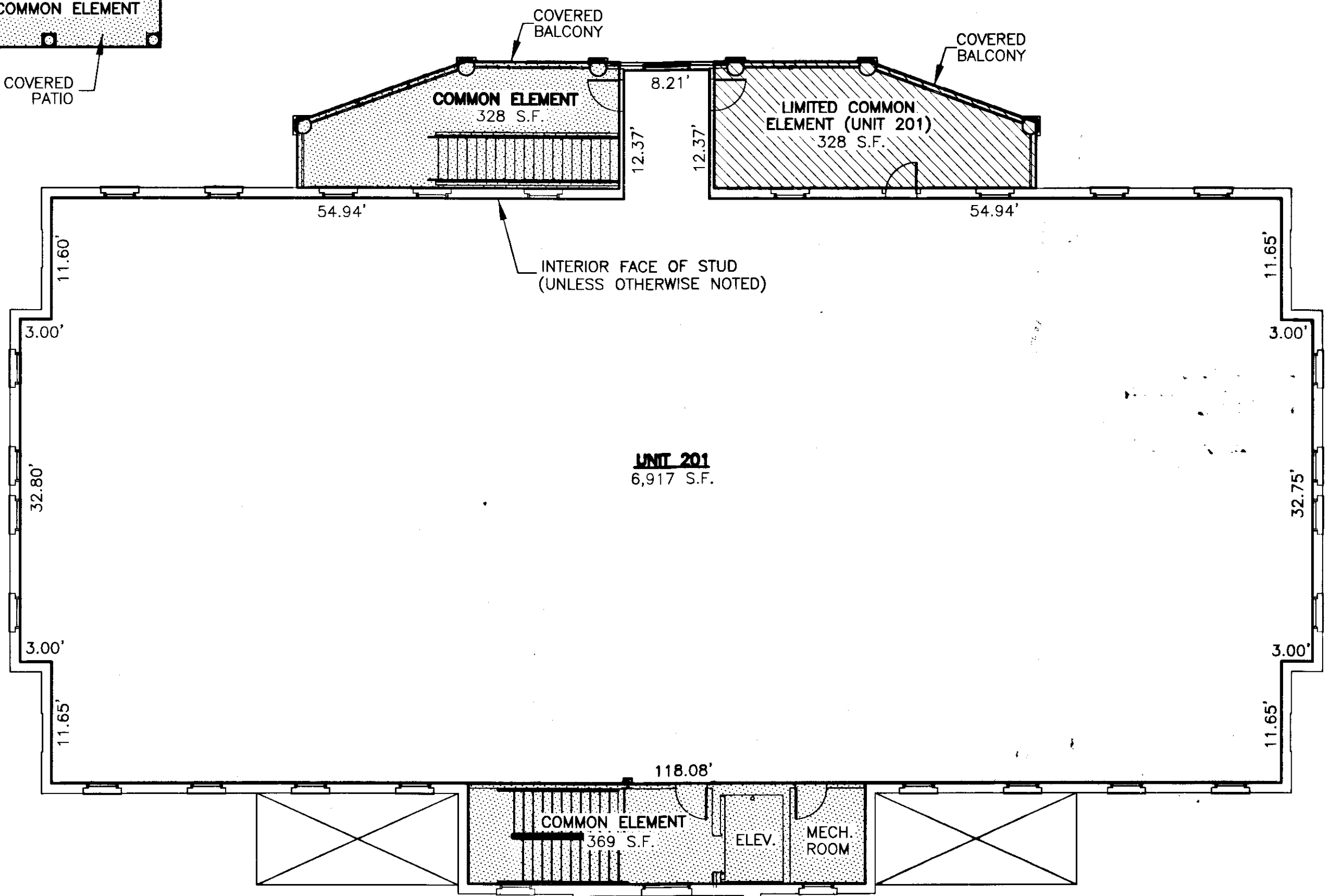
A. **Unit Boundaries.** A Unit consists of a portion of the Condominium designed and intended for individual ownership and use. The boundaries of the individual units are as set out in the Declaration of Condominium recorded as Instrument No. 10028271 in the Circuit Court of the County of James City.

B. **Air Conditioning/Heating/Mechanical.** The air conditioning, refrigerating, ventilation and heating equipment and water, sewer utility and electrical lines within the Unit, and the air conditioning, refrigerating, ventilation and heating equipment, water, sewer, utility and electrical lines, and other apparatus in connection therewith, which serve one Unit, wherever located, shall be owned by the Unit Owner as part of the Unit and are not part of Common Elements.



FIRST FLOOR
SCALE: 1"=10'

- LEGEND**
- COMMON ELEMENT FOR ALL UNITS WITHIN THIS BUILDING UNLESS OTHERWISE NOTED
 - UNIT AREA
 - LCE = LIMITED COMMON ELEMENT FOR UNIT 201 ONLY



SECOND FLOOR
SCALE: 1"=10'

SURVEYORS CERTIFICATE

I HEREBY CERTIFY THAT TO THE BEST OF MY KNOWLEDGE OR BELIEF, THIS PLAT IS ACCURATE AND COMPLIES WITH THE PROVISIONS OF SECTION 55-79.58 (B) OF THE CODE OF VIRGINIA 1950 AS AMENDED AND THAT ALL UNITS DEPICTED HEREON HAVE BEEN SUBSTANTIALLY COMPLETED.

CHACA
STATE CERTIFIED LAND SURVEYOR
12-19-2011
DATE

