

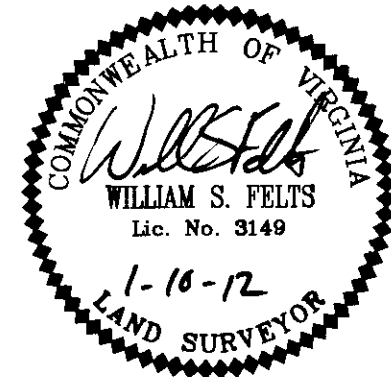
VICINITY MAP - NOT TO SCALE

**SURVEYORS CERTIFICATE**

I HEREBY CERTIFY THAT THIS PLAT IS ACCURATE AND COMPLIES WITH THE PROVISIONS OF SECTION 55-79.58 (A) OF THE CODE OF VIRGINIA 1950 AS AMENDED.

*W.S. Felts*  
WILLIAM S. FELTS LIC. #3149

1-10-12  
DATE

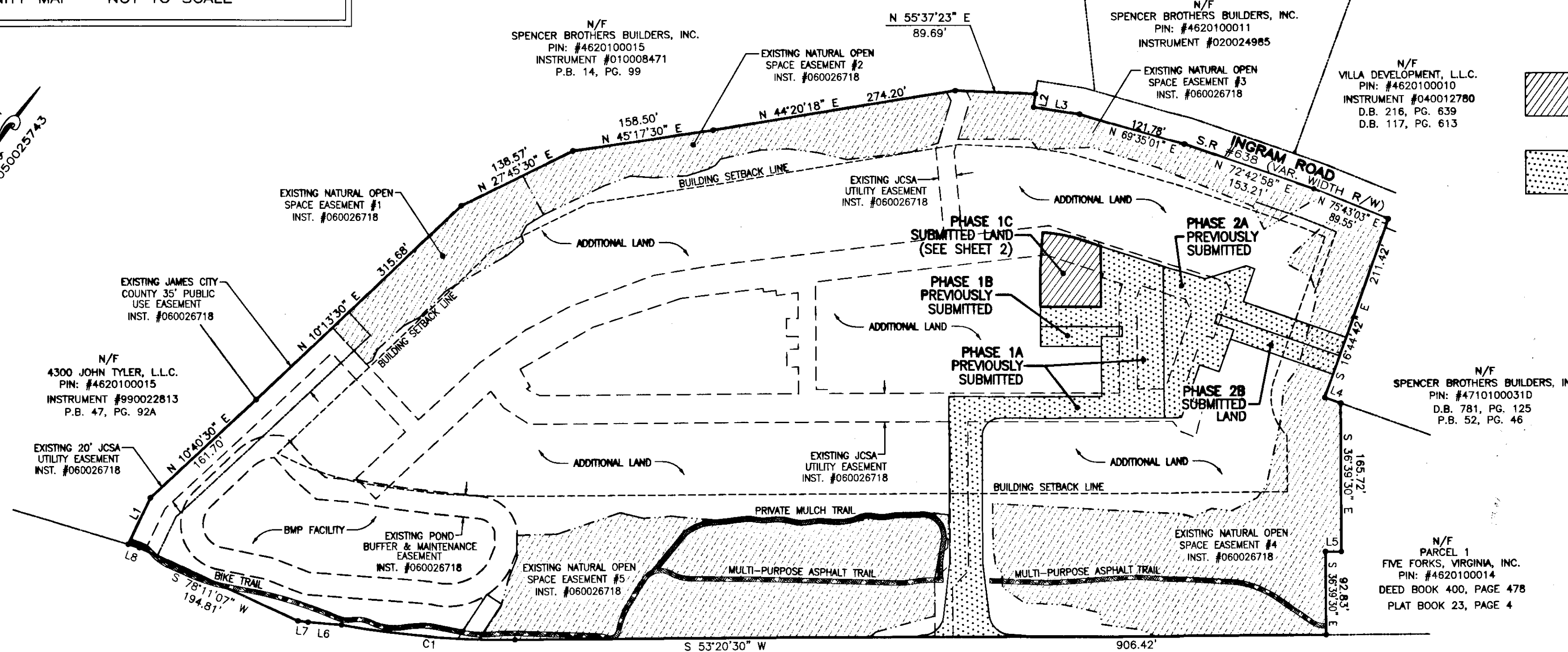


AREA TABLE

PARCEL	SQ. FT.	ACRES
PHASE 1C SUBMITTED LAND	5,157	0.118
PREVIOUSLY SUBMITTED LAND	45,676	1.048
ADDITIONAL LAND	602,403	13.830
TOTAL	653,236	14.996

PLAT OF  
PHASE 1C  
GOVERNOR'S GROVE AT FIVE FORKS  
A CONDOMINIUM  
LOCATED IN THE BERKELEY DISTRICT  
JAMES CITY COUNTY, VIRGINIA  
DATE: 01/10/12 SCALE: 1" = 100' JOB# 06-460  
SHEET 1 OF 2

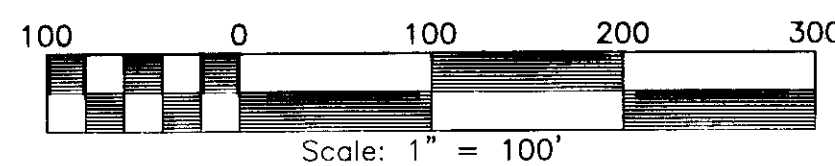
**LandTech Resources, Inc.**  
Surveying • Engineering • GPS  
205-E Bulfinch Blvd. Williamsburg, VA 23188  
Phone: (757) 565-1677 Fax: (757) 565-0782  
web: landtechresources.com



SUBMITTED LAND  
 PREVIOUSLY SUBMITTED LAND

**GENERAL NOTES**

1. THIS PLAT WAS PRODUCED WITHOUT A TITLE REPORT AND MAY NOT REFLECT ALL MATTERS AFFECTING PROPERTY.
2. THIS PROPERTY APPEARS TO FALL IN ZONE "X" AS SHOWN ON COMMUNITY PANEL 51095C0205C DATED SEPTEMBER 28, 2007.
3. ALL UNITS TO BE SERVED BY PUBLIC WATER AND SEWER.
4. ALL LAND AND IMPROVEMENTS OUTSIDE OF BUILDINGS AND WITHIN PHASE LIMITS SHALL BE KNOWN AS COMMON ELEMENT EXCEPT FOR LIMITED COMMON ELEMENTS DESIGNATED ON PLAT AND BUILDING PLANS.
5. THIS PARCEL OF LAND WAS CONVEYED TO GOVERNOR'S GROVE AT FIVE FORKS, L.L.C. BY DEED RECORDED IN INSTRUMENT #070006512.
6. THE STREETS WITHIN THIS CONDOMINIUM SHALL BE KNOWN AS COMMON ELEMENT AND NOT A PUBLIC DEDICATED RIGHT-OF-WAY.
7. PHASE 1C IS SUBMITTED LAND. THE REMAINING PROPERTY HAS BEEN PREVIOUSLY SUBMITTED OR ADDITIONAL LAND. ALL ADDITIONAL LAND AND ALL COMMON ELEMENTS ARE WITHDRAWABLE LAND.
8. PROFFERED COVENANTS, RESTRICTIONS, AND CONDITIONS AFFECTING THIS PROPERTY HAVE BEEN RECORDED AS INST. #050019045.
9. THE LOCATION OF THE PRIVATE MULCH TRAIL AND THE ASPHALT MULTI-PURPOSE TRAIL ARE APPROXIMATE ONLY AND SUBJECT TO CHANGE.



JOHN TYLER HIGHWAY  
STATE ROUTE #5  
(VARIABLE WIDTH PUBLIC R/W)

City of Williamsburg & County of James City  
Circuit Court: This PLAT was recorded on  
at 12:02 AM/PM, PB = PG =  
Document # 120000733  
BETSY B. WOOLRIDGE, CLERK  
*Betsy Woolridge*, Dep. Clerk

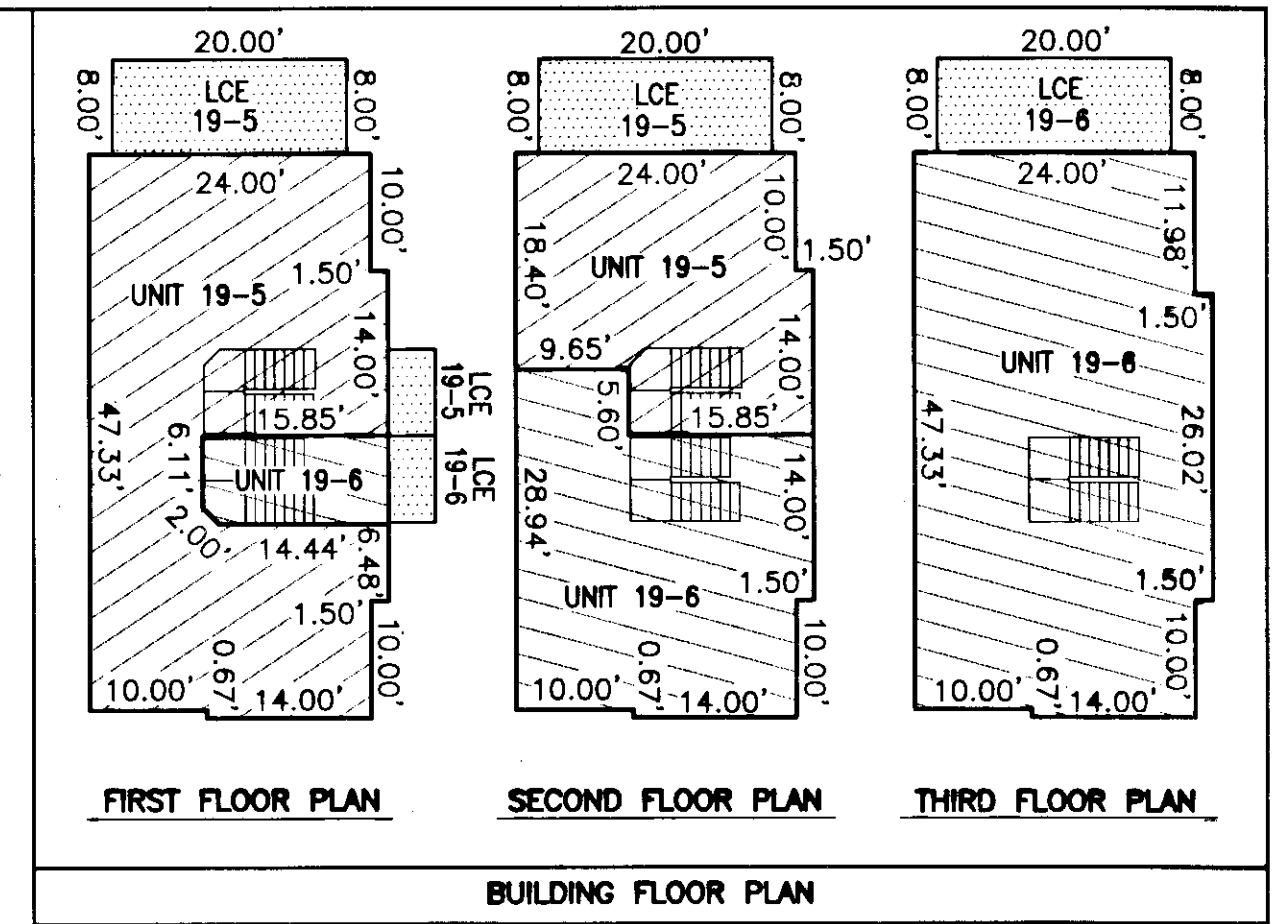
2 Large/Small Plat(s) Recorded  
herewith as # 120000733

CURVE TABLE

NO.	DELTA	CHORD BEARING	TANGENT	RADIUS	ARC	CHORD
C1	10°00'21"	S 58°20'41" W	97.69'	1116.00'	194.89'	194.64'
C2	11°06'17"	N 63°13'01" E	18.47'	190.00'	36.82'	36.77'

LINE TABLE

NO.	DIRECTION	DISTANCE
L1	N 10°44'30" W	57.40'
L2	S 27°48'08" E	15.00'
L3	N 62°11'52" E	52.25'
L4	N 73°15'18" E	18.75'
L5	S 53°20'30" W	17.63'
L6	S 58°14'37" W	37.63'
L7	S 60°24'36" W	11.43'
L8	S 70°12'23" W	12.96'
L9	S 36°39'30" E	40.91'
L10	N 32°56'08" W	42.10'
L11	S 71°09'00" W	30.30'



- INDICATES LIMITED COMMON ELEMENT
- INDICATES UNIT AREA
- INDICATES COMMON ELEMENT
- \*LCE=LIMITED COMMON ELEMENT

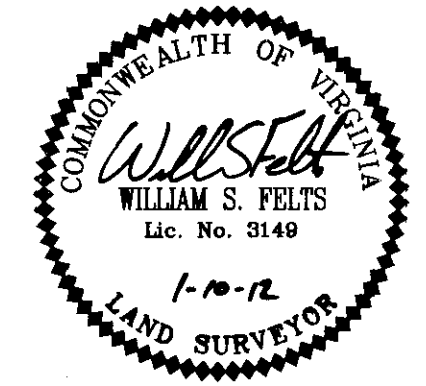
**SURVEYORS CERTIFICATE**

I HEREBY CERTIFY THAT THE PLAN PREVIOUSLY RECORDED FOR GOVERNOR'S GROVE AT FIVE FORKS, A CONDOMINIUM AT INSTRUMENT 090022560 ACCURATELY DEPICTS THE UNIT AND RELATED IMPROVEMENTS SHOWN AND THAT THEY COMPLY WITH THE CODE OF VIRGINIA OF 1950, AS AMENDED 55-79.58(B) AND ARE SUBSTANTIALLY COMPLETE.

I HEREBY CERTIFY THAT THIS PLAT IS ACCURATE AND COMPLIES WITH THE PROVISIONS OF SECTION 55-79.58 (A) OF THE CODE OF VIRGINIA 1950 AS AMENDED AND I FURTHER CERTIFY THAT ALL UNITS DEPICTED HEREON HAVE BEEN SUBSTANTIALLY COMPLETE.

*WillS Felts*  
 WILLIAM S. FELTS LIC. #3149

1-10-12  
 DATE



PLAT OF  
**PHASE 1C**  
**GOVERNOR'S GROVE AT FIVE FORKS**  
 A CONDOMINIUM  
 LOCATED IN THE BERKELEY DISTRICT  
 JAMES CITY COUNTY, VIRGINIA

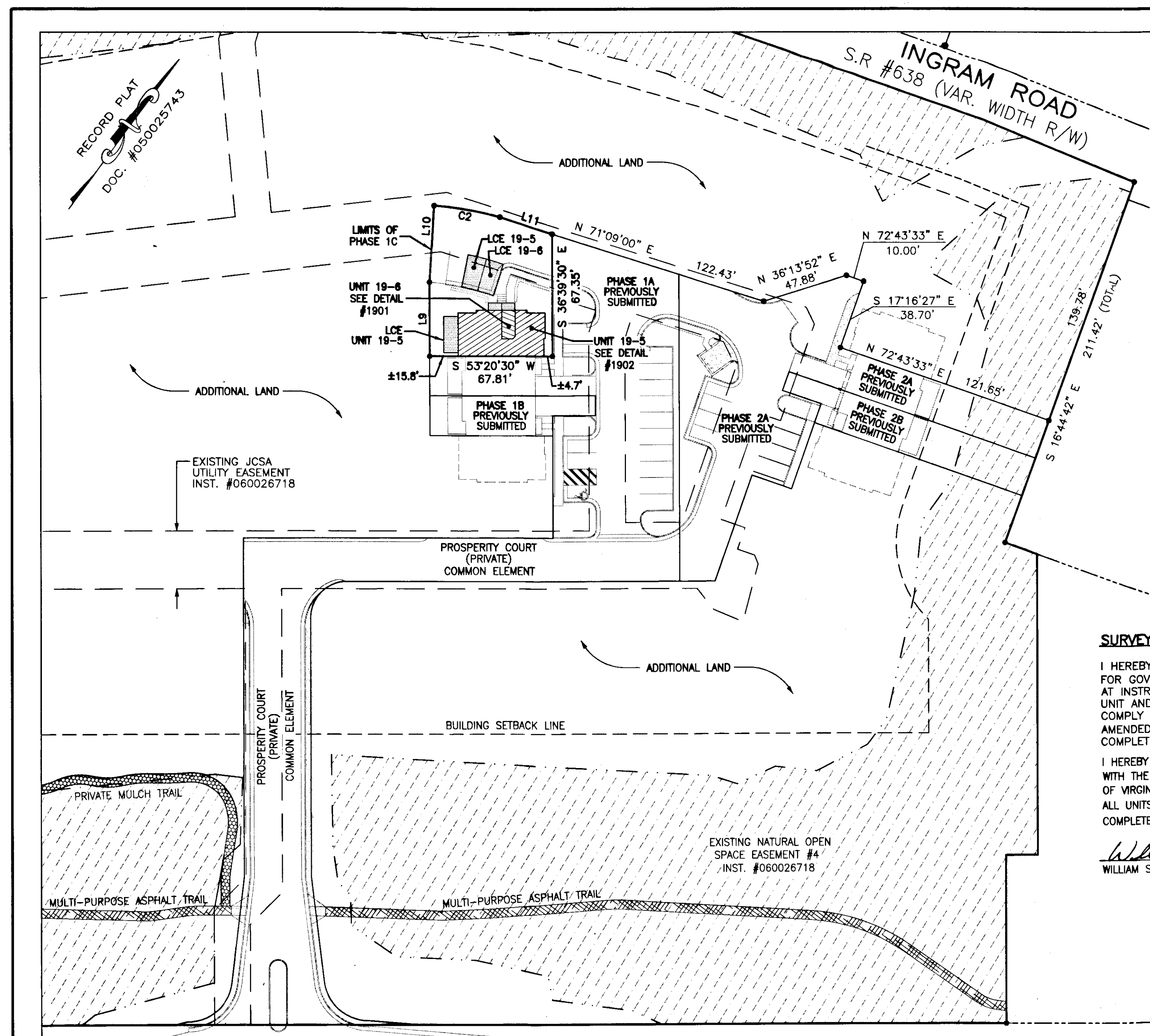
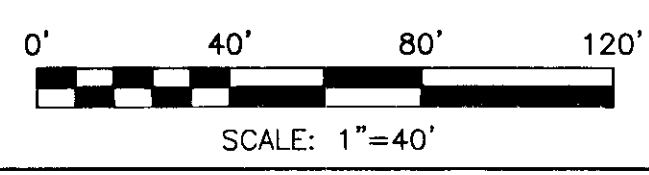
DATE: 01/10/12 SCALE: 1" = 40' JOB# 06-460  
 SHEET 2 OF 2

**LandTech Resources, Inc.**  
 Surveying • Engineering • GPS  
 205-E Bulifants Blvd. Williamsburg, VA 23188  
 Phone: (757) 565-1677 Fax: (757) 565-0782  
 web: landtechresources.com

2 Large/Small Plat(s) Recorded  
 herewith as # 120000733  
 City of Williamsburg & County of James City  
 Circuit Court: This PLAT was recorded on  
 1-12-2012  
 at 12:02 AM PM, PG. 1  
 Document # 120000733  
 BETSY B. WOOLRIDGE, CLERK  
*Betsy Woolridge*, Dep. Clerk

UNIT NUMBER	UNIT TYPE	STREET ADDRESS	PARCEL ID#
19-5	C-(R)	#1902 PROSPERITY CT	4662101902
19-6	B-(R)	#1901 PROSPERITY CT	4622101901

JOHN TYLER HIGHWAY  
 STATE ROUTE #5  
 (VARIABLE WIDTH PUBLIC R/W)



RECORD PLAT  
 DOC. #050025743

EXISTING JCSA  
 UTILITY EASEMENT  
 INST. #060026718

EXISTING NATURAL OPEN  
 SPACE EASEMENT #4  
 INST. #060026718