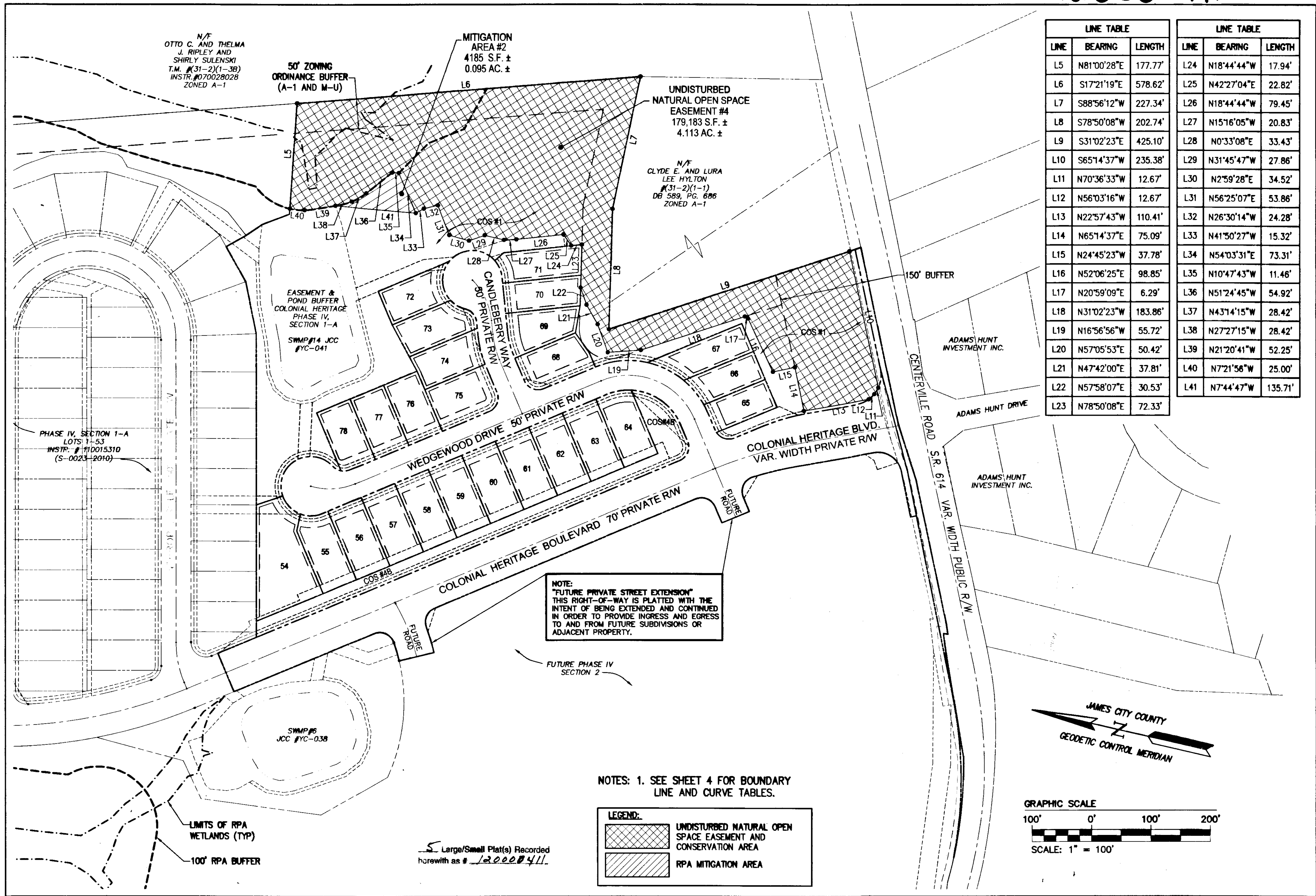


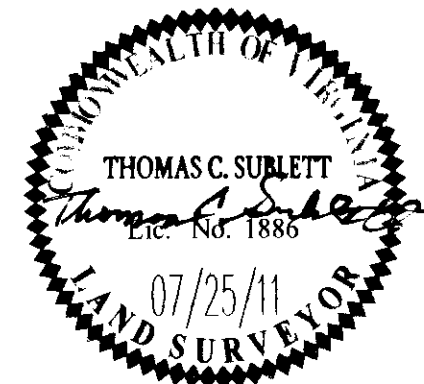
120000411



LINE TABLE			LINE TABLE		
LINE	BEARING	LENGTH	LINE	BEARING	LENGTH
L5	N81°00'28"E	177.77'	L24	N18°44'44"W	17.94'
L6	S17°21'19"E	578.62'	L25	N42°27'04"E	22.82'
L7	S88°56'12"W	227.34'	L26	N18°44'44"W	79.45'
L8	S78°50'08"W	202.74'	L27	N15°16'05"W	20.83'
L9	S31°02'23"E	425.10'	L28	N0°33'08"E	33.43'
L10	S65°14'37"W	235.38'	L29	N31°45'47"W	27.86'
L11	N70°36'33"W	12.67'	L30	N2°59'28"E	34.52'
L12	N56°03'16"W	12.67'	L31	N56°25'07"E	53.86'
L13	N22°57'43"W	110.41'	L32	N26°30'14"W	24.28'
L14	N65°14'37"E	75.09'	L33	N41°50'27"W	15.32'
L15	N24°45'23"W	37.78'	L34	N54°03'31"E	73.31'
L16	N52°06'25"E	98.85'	L35	N10°47'43"W	11.46'
L17	N20°59'09"E	6.29'	L36	N51°24'45"W	54.92'
L18	N31°02'23"W	183.86'	L37	N43°14'15"W	28.42'
L19	N16°56'56"W	55.72'	L38	N27°27'15"W	28.42'
L20	N57°05'53"E	50.42'	L39	N21°20'41"W	52.25'
L21	N47°42'00"E	37.81'	L40	N7°21'56"W	25.00'
L22	N57°58'07"E	30.53'	L41	N7°44'47"W	135.71'
L23	N78°50'08"E	72.33'			

City of Williamsburg & County of James City  
 Circuit Court: This PLAT was recorded on  
 10 January 2012  
 at 9:57 AM/PM, PG. PG.  
 Document # 120000411  
 BETSY B. WOOLRIDGE, CLERK  
 by *Thomas C. Sublett*, Dep. Clerk

1	9/20/2011		JFS
Rev.	Date	Description	Revised By



**AES**  
 CONSULTING ENGINEERS  
 5248 Olde Towne Road, Suite 1  
 Williamsburg, Virginia 23188  
 Phone: (757) 253-0040  
 Fax: (757) 220-8994  
 www.aesva.com

**PLAT OF SUBDIVISION  
 COLONIAL HERITAGE  
 PHASE IV, SECTION 1-B  
 LOTS 54-78  
 PREPARED FOR COLONIAL HERITAGE LLC**

STONEHOUSE DISTRICT    JAMES CITY COUNTY    VIRGINIA

Project Contacts: TCS  
 Project Number: 8861-40-1B  
 Scale: 1"=100'  
 Date: 07/25/11  
 Sheet Number  
**5 of 5**