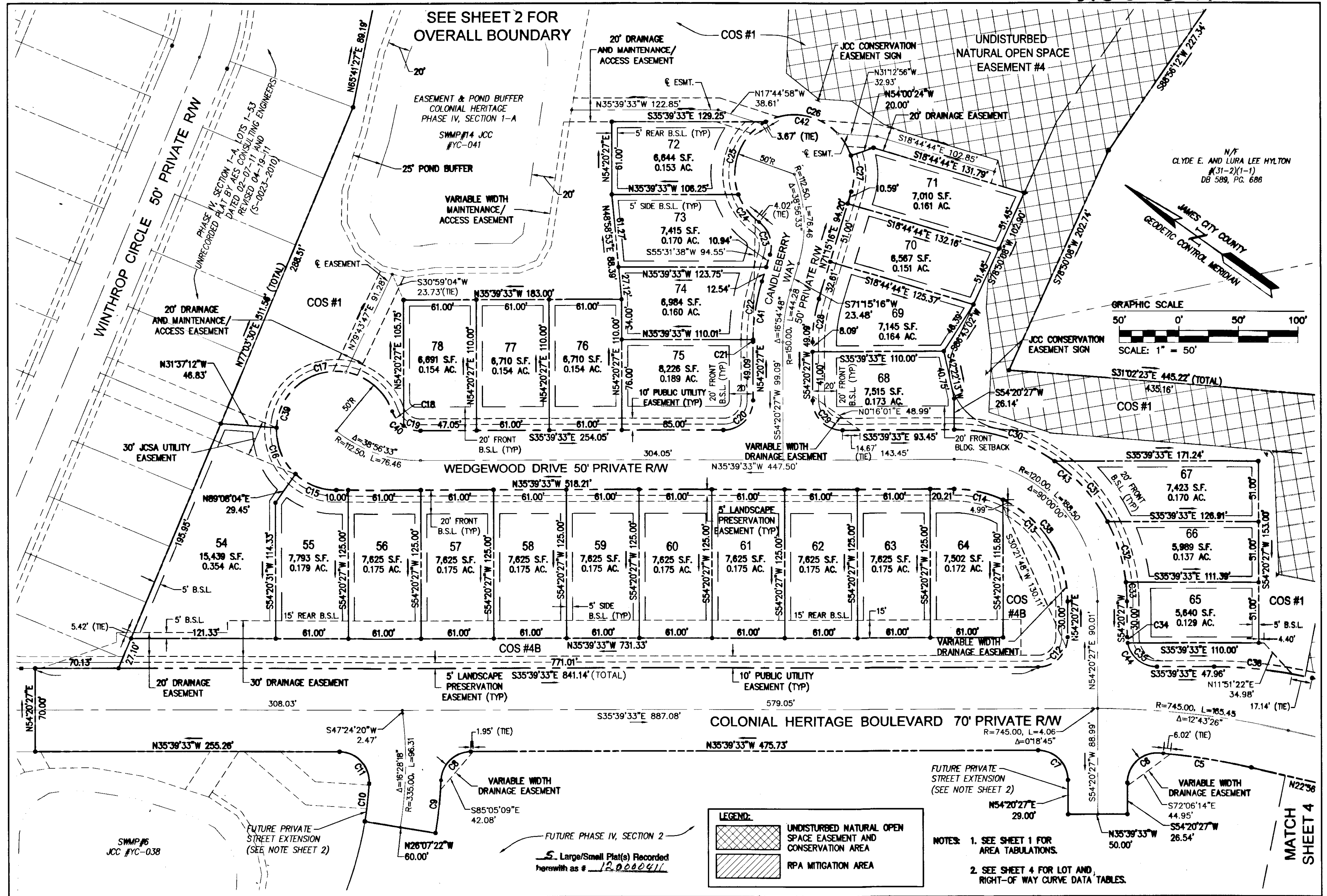
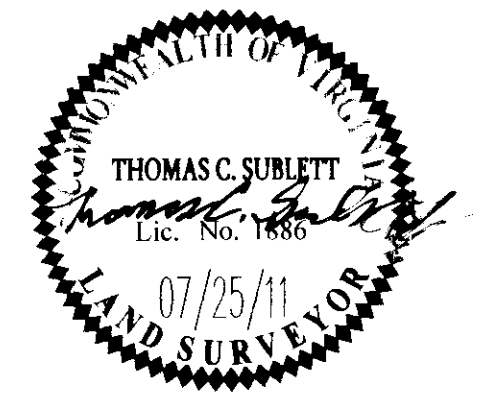


120000411



City of Williamsburg & County of James City Circuit Court: This PLAT was recorded on <u>10 January 2012</u> at <u>4:57 AM/PM</u> , PG. <u> </u>		
Document # <u>120000411</u>		
BETSY B. WOOLRIDGE, CLERK, <u>Betsy Woolridge</u> , Dep. Clerk		
REVISED PLAT PER COUNTY COMMENTS		
1	9/20/2011	JFS
Rev.	Date	Revised By



AES
CONSULTING ENGINEERS
Hampton Roads | Central Virginia | Middle Peninsula

5248 Olde Towne Road, Suite 1
Williamsburg, Virginia 23188
Phone: (757) 253-0040
Fax: (757) 220-8994
www.aesva.com

**PLAT OF SUBDIVISION
COLONIAL HERITAGE**
PHASE IV, SECTION 1-B
LOTS 54-78
PREPARED FOR COLONIAL HERITAGE LLC.

STONEHOUSE DISTRICT JAMES CITY COUNTY VIRGINIA

Project Contacts:	TCS
Project Number:	8881-40-1B
Scale:	1"=50'
Date:	07/25/11
Sheet Number	3 of 5

5. Large/Small Plat(s) Recorded herewith as # 120000411

LEGEND:

- UNDISTURBED NATURAL OPEN SPACE EASEMENT AND CONSERVATION AREA
- RPA MITIGATION AREA

- NOTES:**
1. SEE SHEET 1 FOR AREA TABULATIONS.
 2. SEE SHEET 4 FOR LOT AND RIGHT-OF WAY CURVE DATA TABLES.

MATCH SHEET 4