

111136

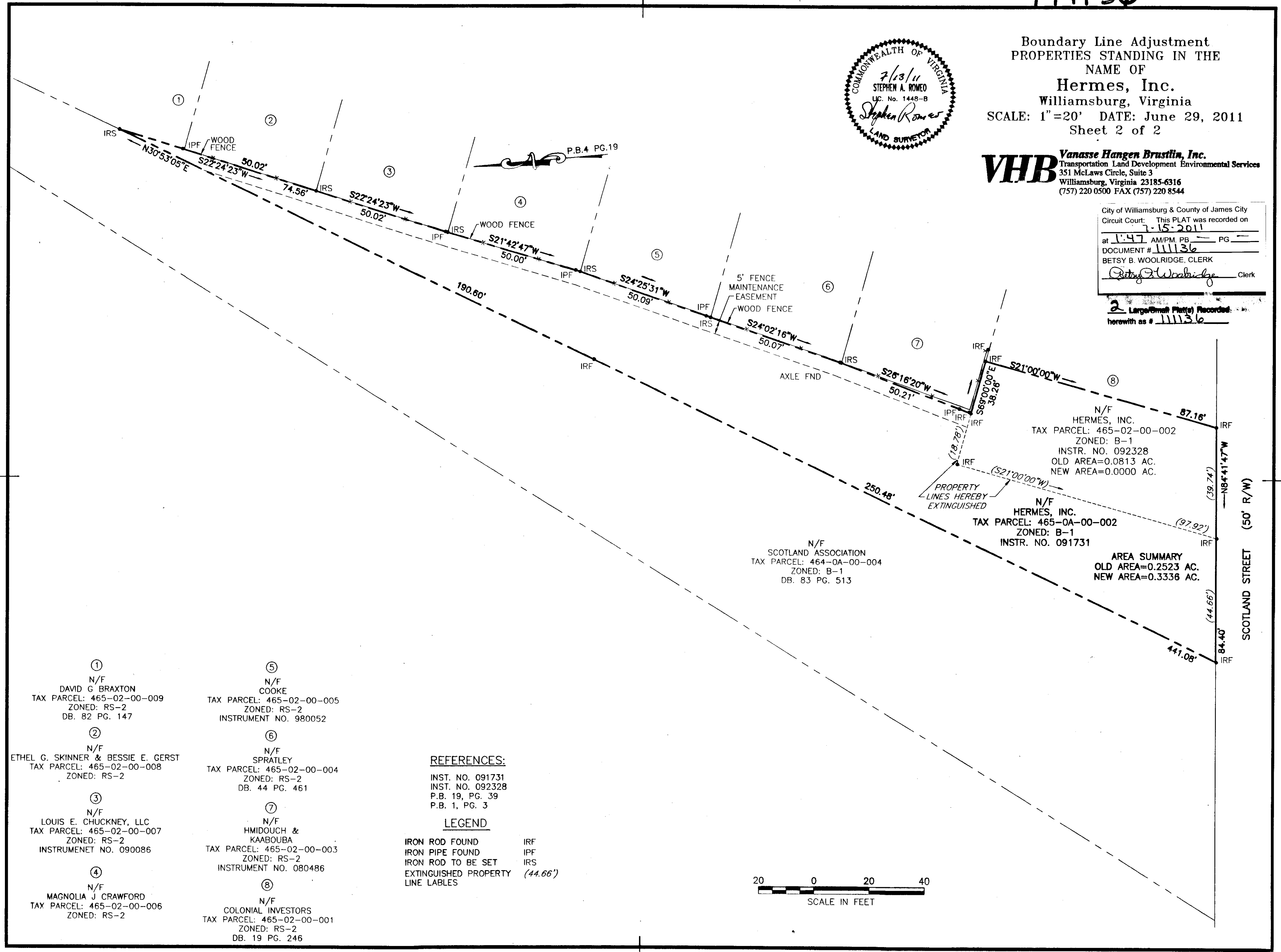


Boundary Line Adjustment
 PROPERTIES STANDING IN THE
 NAME OF
Hermes, Inc.
 Williamsburg, Virginia
 SCALE: 1"=20' DATE: June 29, 2011
 Sheet 2 of 2

VHB Vanasse Hangen Brustlin, Inc.
 Transportation Land Development Environmental Services
 351 McLaws Circle, Suite 3
 Williamsburg, Virginia 23185-6316
 (757) 220 0500 FAX (757) 220 8544

City of Williamsburg & County of James City
 Circuit Court: This PLAT was recorded on
 7-15-2011
 at 1:47 AM/PM, PG. --
 DOCUMENT # 111136
 BETSY B. WOOLRIDGE, CLERK
Betsy B. Woolridge Clerk

2 Large Format Plats Recorded:
 herewith as # 111136



①
 N/F
 DAVID G. BRAXTON
 TAX PARCEL: 465-02-00-009
 ZONED: RS-2
 DB. 82 PG. 147

②
 N/F
 ETHEL G. SKINNER & BESSIE E. GERST
 TAX PARCEL: 465-02-00-008
 ZONED: RS-2

③
 N/F
 LOUIS E. CHUCKNEY, LLC
 TAX PARCEL: 465-02-00-007
 ZONED: RS-2
 INSTRUMENT NO. 090086

④
 N/F
 MAGNOLIA J. CRAWFORD
 TAX PARCEL: 465-02-00-006
 ZONED: RS-2

⑤
 N/F
 COOKE
 TAX PARCEL: 465-02-00-005
 ZONED: RS-2
 INSTRUMENT NO. 980052

⑥
 N/F
 SPRATLEY
 TAX PARCEL: 465-02-00-004
 ZONED: RS-2
 DB. 44 PG. 461

⑦
 N/F
 HMIDOUCH & KAABOUBA
 TAX PARCEL: 465-02-00-003
 ZONED: RS-2
 INSTRUMENT NO. 080486

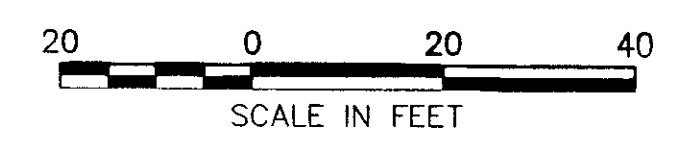
⑧
 N/F
 COLONIAL INVESTORS
 TAX PARCEL: 465-02-00-001
 ZONED: RS-2
 DB. 19 PG. 246

REFERENCES:

INST. NO. 091731
 INST. NO. 092328
 P.B. 19, PG. 39
 P.B. 1, PG. 3

LEGEND

IRON ROD FOUND IRF
 IRON PIPE FOUND IPF
 IRON ROD TO BE SET IRS
 EXTINGUISHED PROPERTY LINE LABELS (44.66')



N/F
 HERMES, INC.
 TAX PARCEL: 465-02-00-002
 ZONED: B-1
 INSTR. NO. 092328
 OLD AREA=0.0813 AC.
 NEW AREA=0.0000 AC.

N/F
 HERMES, INC.
 TAX PARCEL: 465-0A-00-002
 ZONED: B-1
 INSTR. NO. 091731

N/F
 SCOTLAND ASSOCIATION
 TAX PARCEL: 464-0A-00-004
 ZONED: B-1
 DB. 83 PG. 513

AREA SUMMARY
 OLD AREA=0.2523 AC.
 NEW AREA=0.3336 AC.