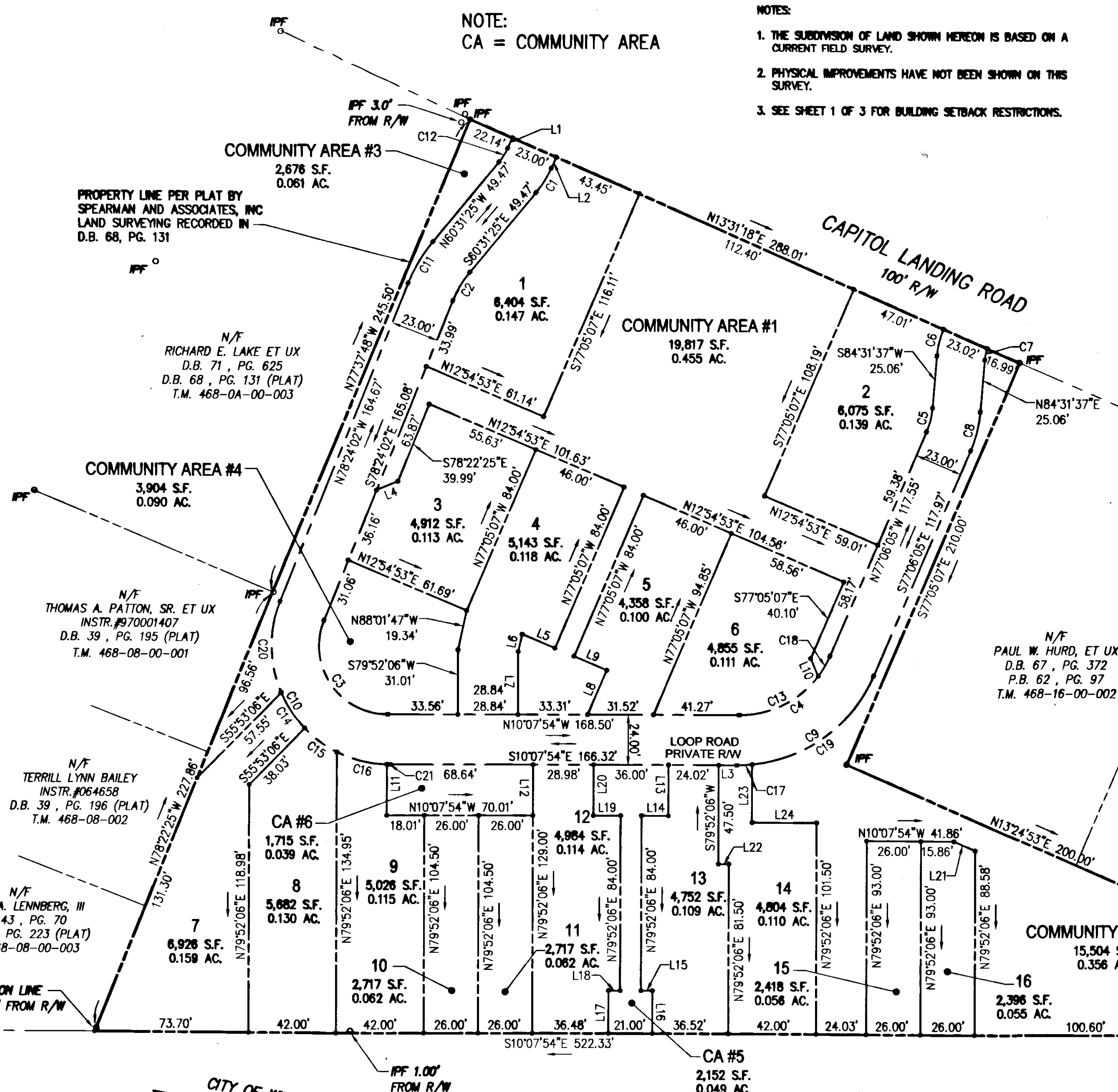


LINE TABLE		
LINE	BEARING	LENGTH
L1	N75°54'17"W	5.48'
L2	S75°54'17"E	5.72'
L3	S10°07'54"E	8.68'
L4	S32°22'25"E	11.08'
L5	S12°54'53"W	17.00'
L6	S87°17'58"E	8.55'
L7	S79°52'06"W	30.23'
L8	N77°05'07"W	23.19'
L9	S12°54'53"W	17.00'
L10	N56°54'53"E	9.29'
L11	N79°52'06"E	24.52'
L12	N79°52'06"E	24.50'
L13	S79°52'06"W	24.50'
L14	N10°07'54"W	13.00'
L15	S10°07'54"E	5.50'
L16	S79°52'06"W	20.50'
L17	N79°52'06"E	20.50'
L18	S10°07'54"E	5.50'
L19	N10°07'54"W	13.00'
L20	N79°52'06"E	24.50'
L21	N13°24'53"E	11.06'
L22	N10°07'54"W	5.00'
L23	N79°52'06"E	27.88'
L24	N10°07'54"W	31.00'



CURVE TABLE						
CURVE #	DELTA	RADIUS	LENGTH	TANGENT	CHORD	CHORD BEARING
C1	15°22'52"	52.00'	13.96'	7.02'	13.92'	S68°12'51"E
C2	17°52'36"	51.00'	15.91'	8.02'	15.85'	S69°27'44"E
C3	111°43'53"	33.00'	64.35'	48.68'	54.63'	N45°44'02"E
C4	66°58'10"	47.00'	54.94'	31.09'	51.86'	N43°37'00"W
C5	18°22'18"	37.00'	11.86'	5.98'	11.81'	N86°17'14"W
C6	17°27'51"	43.00'	13.11'	6.60'	13.06'	N86°44'28"W
C7	15°42'09"	20.00'	5.48'	2.76'	5.46'	S87°37'19"E
C8	18°22'18"	60.00'	19.24'	9.70'	19.16'	S86°17'14"E
C9	66°58'10"	71.00'	82.99'	46.97'	78.34'	S43°37'00"E
C10	111°43'53"	57.00'	111.15'	84.08'	94.36'	S45°44'02"W
C11	17°52'36"	74.00'	23.09'	11.64'	23.00'	N69°27'44"W
C12	15°22'52"	29.00'	7.79'	3.92'	7.76'	N68°12'51"W
C13	53°16'57"	47.00'	43.71'	23.58'	42.15'	S36°46'23"E
C14	20°39'04"	57.00'	20.54'	10.38'	20.43'	N45°56'12"E
C15	19°19'42"	57.00'	19.23'	9.71'	19.14'	N25°56'50"E
C16	25°02'19"	57.00'	24.91'	12.66'	24.71'	N3°45'49"E
C17	5°54'50"	71.00'	7.33'	3.67'	7.33'	N13°05'19"W
C18	13°41'14"	47.00'	11.23'	5.64'	11.20'	N70°15'28"W
C19	61°03'20"	71.00'	75.66'	41.87'	72.13'	N46°34'25"W
C20	45°20'14"	57.00'	45.10'	23.81'	43.94'	N78°55'51"E
C21	1°22'34"	57.00'	1.37'	0.68'	1.37'	N9°26'38"W

- NOTES:
1. THE SUBDIVISION OF LAND SHOWN HEREON IS BASED ON A CURRENT FIELD SURVEY.
 2. PHYSICAL IMPROVEMENTS HAVE NOT BEEN SHOWN ON THIS SURVEY.
 3. SEE SHEET 1 OF 3 FOR BUILDING SETBACK RESTRICTIONS.

NOTE:
CA = COMMUNITY AREA

PROPERTY LINE PER PLAT BY SPEARMAN AND ASSOCIATES, INC LAND SURVEYING RECORDED IN D.B. 68, PG. 131

N/F RICHARD E. LAKE ET UX D.B. 71, PG. 625 D.B. 68, PG. 131 (PLAT) T.M. 468-0A-00-003

N/F THOMAS A. PATTON, SR. ET UX INSTR. #970001407 D.B. 39, PG. 195 (PLAT) T.M. 468-08-00-001

N/F TERRILL LYNN BAILEY INSTR. #064658 D.B. 39, PG. 196 (PLAT) T.M. 468-08-00-002

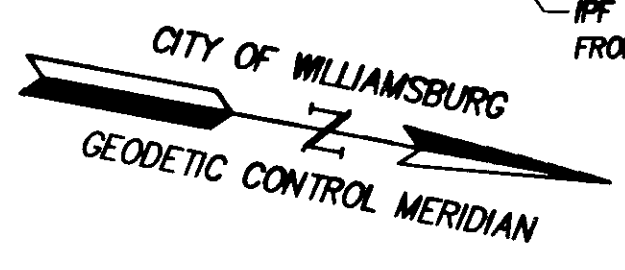
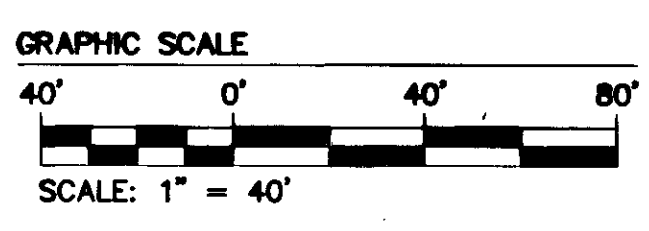
N/F FRANK A. LENNBERG, III D.B. 43, PG. 70 D.B. 50, PG. 223 (PLAT) T.M. 468-08-00-003

N/F PAUL W. HURD, ET UX D.B. 67, PG. 372 P.B. 62, PG. 97 T.M. 468-16-00-002

N/F PAUL W. HURD, ET UX D.B. 67, PG. 372 P.B. 62, PG. 97 T.M. 468-16-00-001

N/F OUMKAAR SARRAN & FONTAINE R. SARRAN INSTR. #052719 P.B. 14, PG. 47 T.M. 438-03-00-004A

SEE SHEET 3 FOR EXISTING AND PROPOSED EASEMENTS AND PROPERTY LINES TO BE EXTINGUISHED



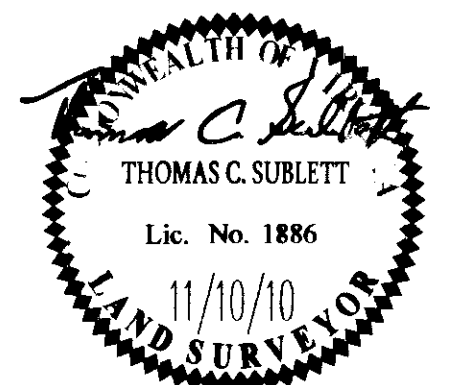
PAGE STREET 80' R/W

2nd STREET 80' R/W

STATE OF VIRGINIA
CITY OF WILLIAMSBURG & COUNTY OF JAMES CITY CIRCUIT COURT.
THIS 19 DAY OF April 2011
THE PLAT SHOWN HEREON WAS PRESENTED AND ADMITTED TO THE RECORD AS THE LAW DIRECTS. @12:51 PM/PM
INSTRUMENT # 110642

TESTE: Betsy B. Woolridge
BETSY B. WOOLRIDGE, CLERK
[Signature]

Rev.	Date	Description	Revised By
1	3/3/11	REVISED PER COMMENTS FROM THE CITY OF WILLIAMSBURG	TCS



AES
CONSULTING ENGINEERS
5248 Old Towne Road, Suite 1
Williamsburg, Virginia 23188
Phone: (757) 253-0040
Fax: (757) 220-8994
www.aesva.com

PLAT OF SUBDIVISION AND LOT LINE EXTINGUISHMENT
CAPITOL LANDING GREEN
OWNED BY COLONIAL PENNIMAN, LLC
CITY OF WILLIAMSBURG VIRGINIA

Project Contacts: TCS/JFS	
Project Number: 8987	
Scale: 1"=40'	Date: 11/10/10
Sheet Number	
2 OF 3	