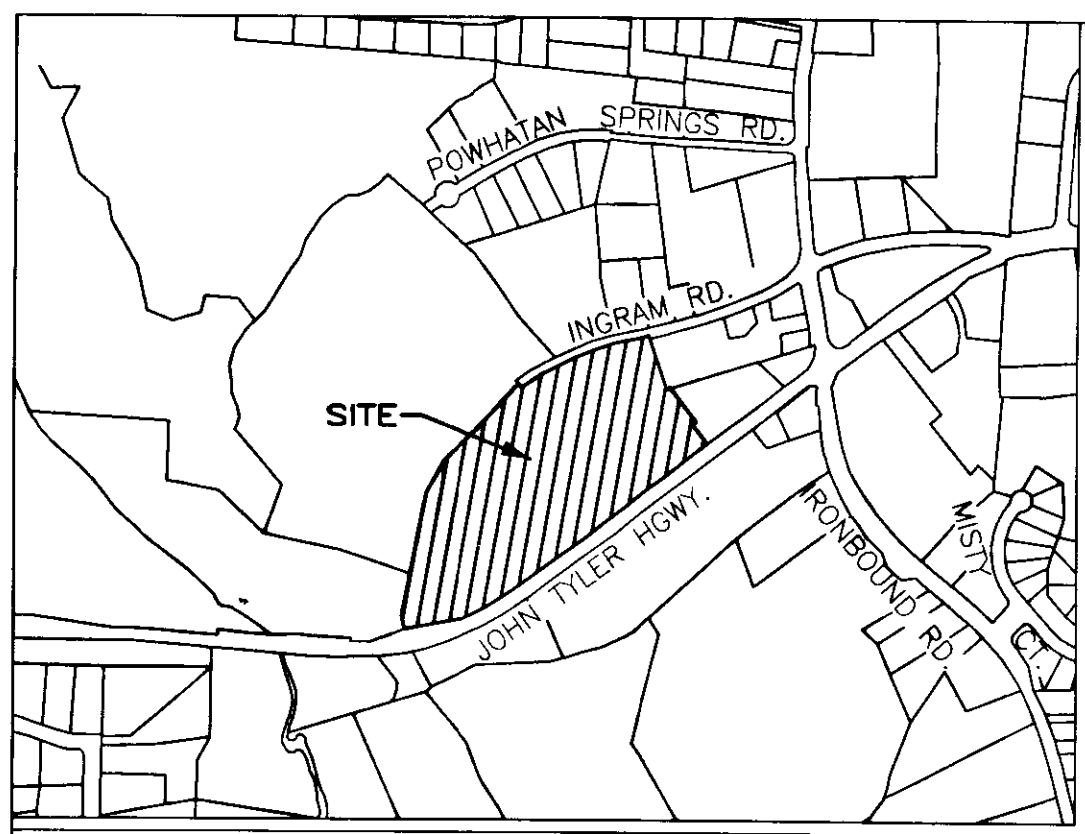


110024808

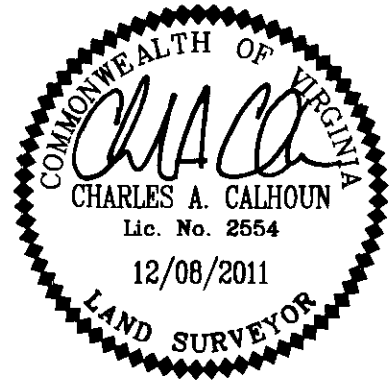


VICINITY MAP - NOT TO SCALE

SURVEYORS CERTIFICATE

I HEREBY CERTIFY THAT THIS PLAT IS ACCURATE AND COMPLIES WITH THE PROVISIONS OF SECTION 55-79.58 (A) OF THE CODE OF VIRGINIA 1950 AS AMENDED.

CHACA
 CHARLES A. CALHOUN LIC.# 2554 12/08/2011 DATE

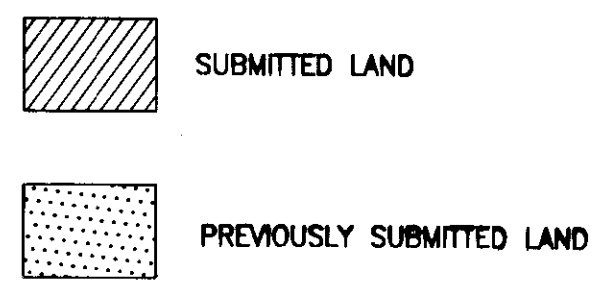
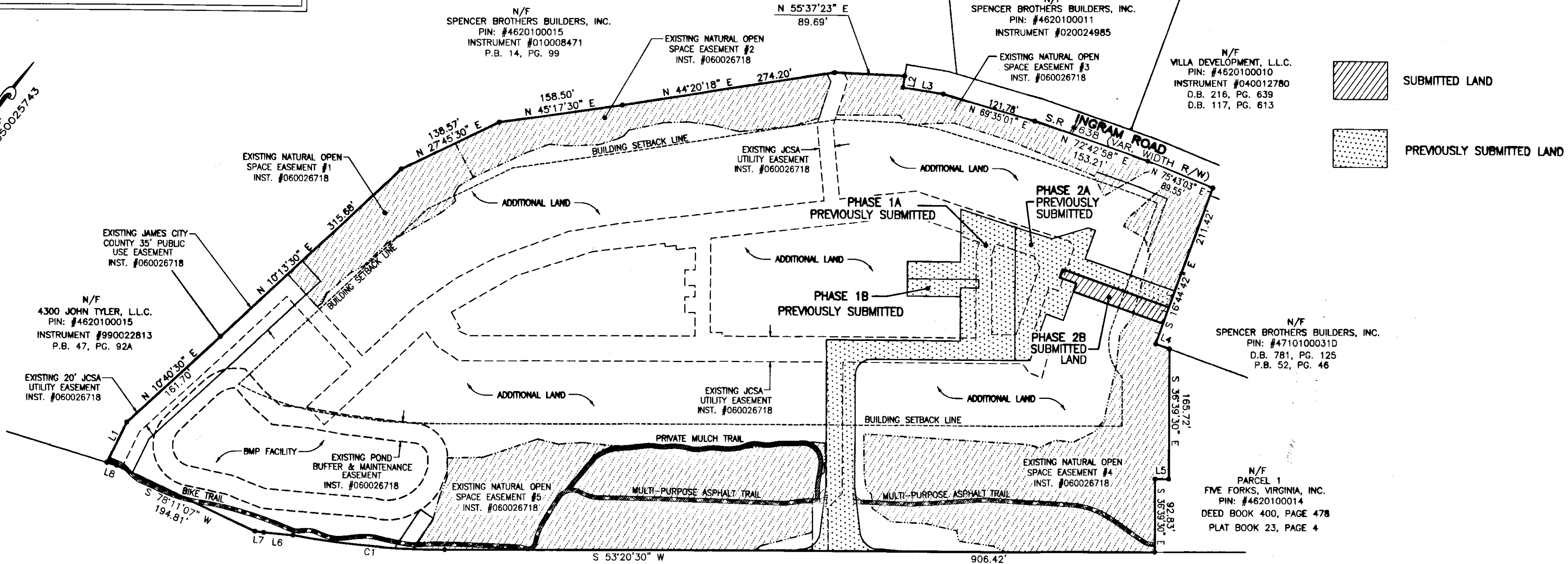
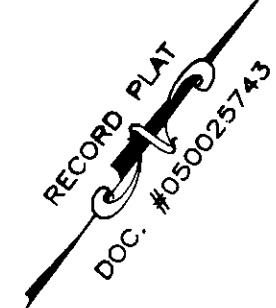


AREA TABLE

PARCEL	SQ. FT.	ACRES
PHASE 2B SUBMITTED LAND	2,917	0.067
PREVIOUSLY SUBMITTED LAND	42,759	0.981
ADDITIONAL LAND	607,560	13.948
TOTAL	653,236	14.996

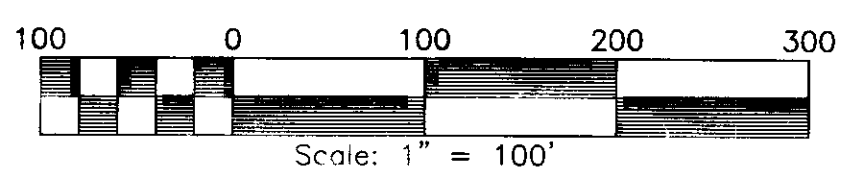
PLAT OF
PHASE 2B
GOVERNOR'S GROVE AT FIVE FORKS
 A CONDOMINIUM
 LOCATED IN THE BERKELEY DISTRICT
 JAMES CITY COUNTY, VIRGINIA
 DATE: 12/08/11 SCALE: 1" = 100' JOB# 06-460
 SHEET 1 OF 2

LandTech Resources, Inc.
 Surveying · Engineering · GPS
 205-E Bulfoats Blvd. Williamsburg, VA 23188
 Phone: (757) 565-1677 Fax: (757) 565-0782
 web: landtechresources.com



GENERAL NOTES

1. THIS PLAT WAS PRODUCED WITHOUT A TITLE REPORT AND MAY NOT REFLECT ALL MATTERS AFFECTING PROPERTY.
2. THIS PROPERTY APPEARS TO FALL IN ZONE "X" AS SHOWN ON COMMUNITY PANEL 51095C0205C DATED SEPTEMBER 28, 2007.
3. ALL UNITS TO BE SERVED BY PUBLIC WATER AND SEWER.
4. ALL LAND AND IMPROVEMENTS OUTSIDE OF BUILDINGS AND WITHIN PHASE LIMITS SHALL BE KNOWN AS COMMON ELEMENT EXCEPT FOR LIMITED COMMON ELEMENTS DESIGNATED ON PLAT AND BUILDING PLANS.
5. THIS PARCEL OF LAND WAS CONVEYED TO LEGACY GOVERNOR'S GROVE, LLC BY DEED RECORDED IN INSTRUMENT #090022562.
6. THE STREETS WITHIN THIS CONDOMINIUM SHALL BE KNOWN AS COMMON ELEMENT AND NOT A PUBLIC DEDICATED RIGHT-OF-WAY.
7. PHASE 2B IS SUBMITTED LAND. THE REMAINING PROPERTY HAS BEEN PREVIOUSLY SUBMITTED OR ADDITIONAL LAND. ALL ADDITIONAL LAND AND ALL COMMON ELEMENTS ARE WITHDRAWABLE LAND.
8. PROFFERED COVENANTS, RESTRICTIONS, AND CONDITIONS AFFECTING THIS PROPERTY HAVE BEEN RECORDED AS INST. #050019045.
9. THE LOCATION OF THE PRIVATE MULCH TRAIL AND THE ASPHALT MULTI-PURPOSE TRAIL ARE APPROXIMATE ONLY AND SUBJECT TO CHANGE.



JOHN TYLER HIGHWAY
 STATE ROUTE #5
 (VARIABLE WIDTH PUBLIC R/W)

2 Large/Small Plats Recorded herewith as # 110024808

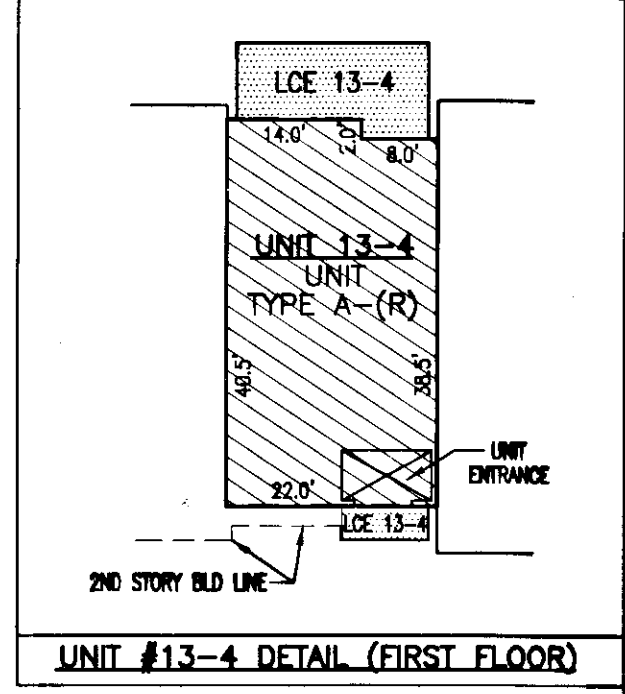
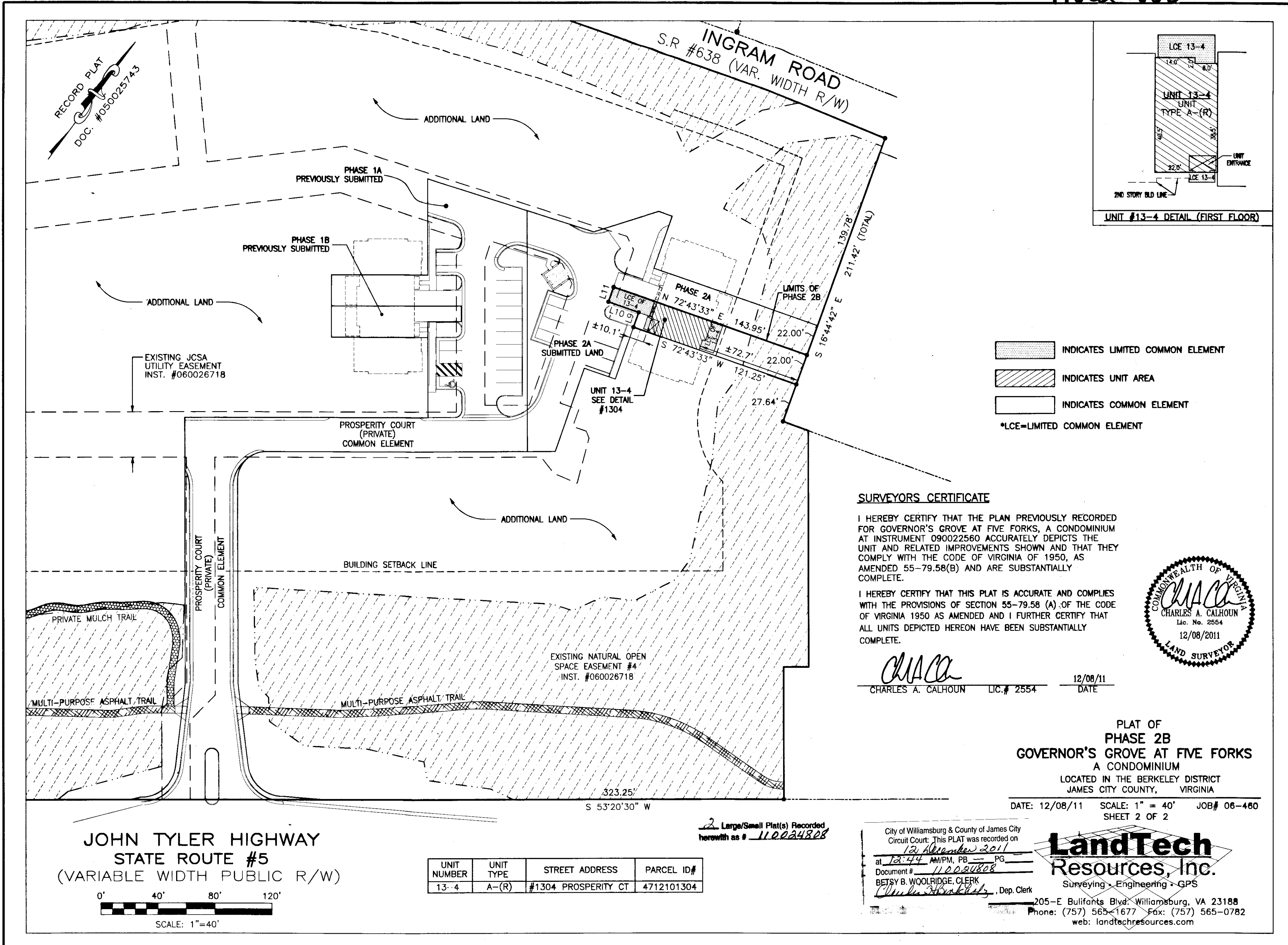
City of Williamsburg & County of James City
 Circuit Court: This PLAT was recorded on
 12 December 2011
 at 12:44 AM/PM, PG _____
 Document # 110024808
 BETSY B. WOOLRIDGE, CLERK
 _____, Dep. Clerk

CURVE TABLE

NO.	DELTA	CHORD BEARING	TANGENT	RADIUS	ARC	CHORD
C1	10°00'21"	S 58°20'41" W	97.69'	1116.00'	194.89'	194.64'
C2	84°01'13"	N 85°30'40" W	22.07'	24.50'	35.93'	32.79'
C3	90°00'00"	N 08°20'30" E	20.00'	20.00'	31.42'	28.28'

LINE TABLE

NO.	DIRECTION	DISTANCE
L1	N 10°44'30" W	57.40'
L2	S 27°48'08" E	15.00'
L3	N 62°11'52" E	52.25'
L4	N 73°15'18" E	18.75'
L5	S 53°20'30" W	17.63'
L6	S 58°14'37" W	37.63'
L7	S 60°24'36" W	11.43'
L8	S 70°12'23" W	12.96'
L9	N 17°16'27" W	11.00'
L10	S 72°43'33" W	22.50'
L11	N 17°16'27" W	11.00'



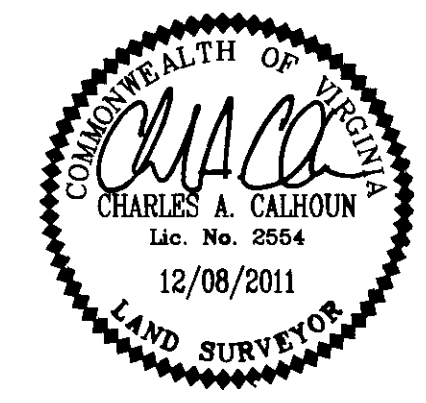
- INDICATES LIMITED COMMON ELEMENT
- INDICATES UNIT AREA
- INDICATES COMMON ELEMENT
- *LCE=LIMITED COMMON ELEMENT

SURVEYORS CERTIFICATE

I HEREBY CERTIFY THAT THE PLAN PREVIOUSLY RECORDED FOR GOVERNOR'S GROVE AT FIVE FORKS, A CONDOMINIUM AT INSTRUMENT 090022560 ACCURATELY DEPICTS THE UNIT AND RELATED IMPROVEMENTS SHOWN AND THAT THEY COMPLY WITH THE CODE OF VIRGINIA OF 1950, AS AMENDED 55-79.58(B) AND ARE SUBSTANTIALLY COMPLETE.

I HEREBY CERTIFY THAT THIS PLAT IS ACCURATE AND COMPLIES WITH THE PROVISIONS OF SECTION 55-79.58 (A) OF THE CODE OF VIRGINIA 1950 AS AMENDED AND I FURTHER CERTIFY THAT ALL UNITS DEPICTED HEREON HAVE BEEN SUBSTANTIALLY COMPLETE.

CHACA
 CHARLES A. CALHOUN LIC.# 2554 12/08/11
 DATE



PLAT OF
 PHASE 2B
 GOVERNOR'S GROVE AT FIVE FORKS
 A CONDOMINIUM
 LOCATED IN THE BERKELEY DISTRICT
 JAMES CITY COUNTY, VIRGINIA

DATE: 12/08/11 SCALE: 1" = 40' JOB# 06-460
 SHEET 2 OF 2

JOHN TYLER HIGHWAY
 STATE ROUTE #5
 (VARIABLE WIDTH PUBLIC R/W)

0' 40' 80' 120'
 SCALE: 1"=40'

UNIT NUMBER	UNIT TYPE	STREET ADDRESS	PARCEL ID#
13-4	A-(R)	#1304 PROSPERITY CT	4712101304

2 Large/Small Plat(s) Recorded herewith as # 110024808

City of Williamsburg & County of James City
 Circuit Court: This PLAT was recorded on
 12 December 2011
 at 12:44 AM/PM, PB PG
 Document # 110024808
 BETSY B. WOOLRIDGE, CLERK
Charles Calhoun, Dep. Clerk

LandTech Resources, Inc.
 Surveying • Engineering • GPS
 205-E Bulfinch Blvd. Williamsburg, VA 23188
 Phone: (757) 565-1677 Fax: (757) 565-0782
 web: landtechresources.com