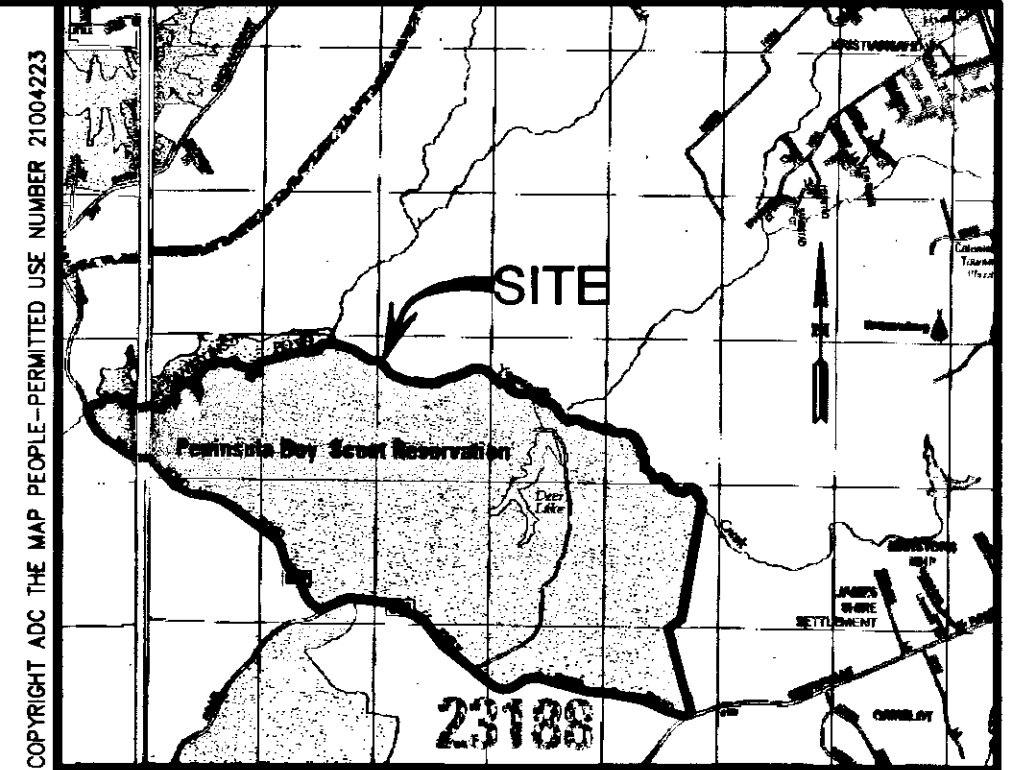
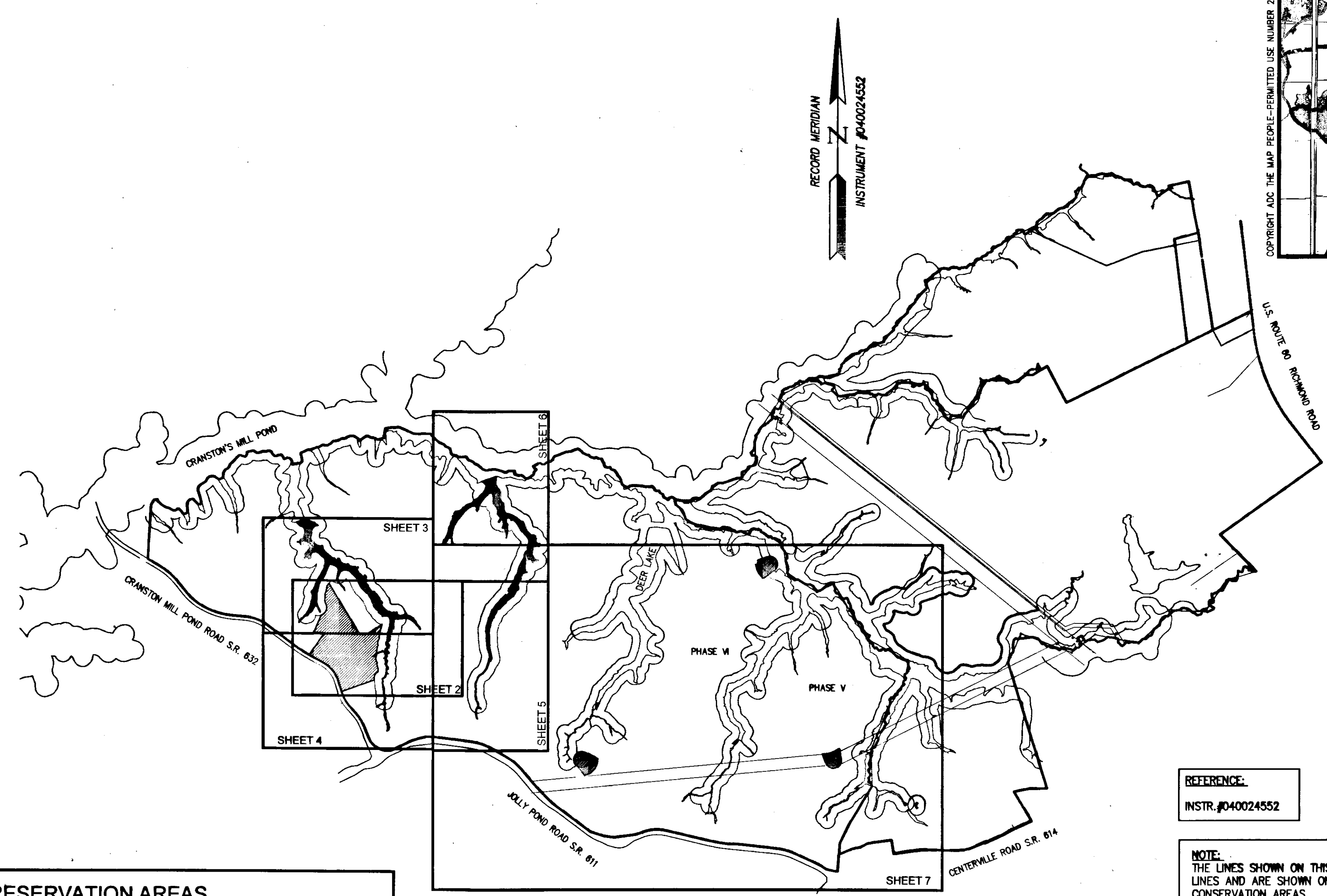


110019144



VICINITY MAP
SCALE 1"=3000'



RECORD MERIDIAN
INSTRUMENT #040024552

COPYRIGHT ADC THE MAP PEOPLE-PERMITTED USE NUMBER 21004223

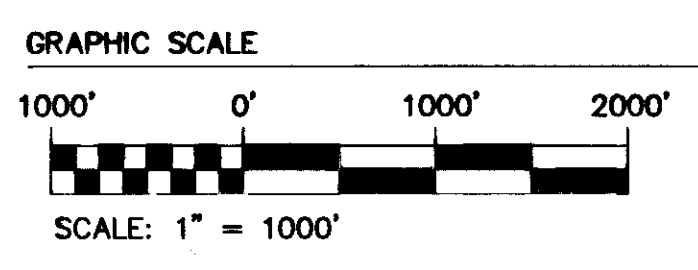
REFERENCE:
INSTR. #040024552

NOTE:
THE LINES SHOWN ON THIS MAP ARE NOT INTENDED TO BE PROPERTY LINES AND ARE SHOWN ONLY TO DESIGNATE THE PRESERVATION AND CONSERVATION AREAS.

PRESERVATION AREAS

NON-RPA UPLAND BUFFER ADJACENT TO WETLANDS PRESERVATION	14.63 ACRES±
WETLAND PRESERVATION	11.95 ACRES±
ENDANGERED SPECIES CONSERVATION AREA	3.50 ACRES±
STREAM CHANNEL PRESERVATION	5,423 LF

KEY MAP



STATE OF VIRGINIA
CITY OF WILLIAMSBURG & COUNTY OF JAMES CITY CIRCUIT COURT. THIS 12 DAY OF Sept 2002.
THE MAP SHOWN HEREON WAS PRESENTED AND ADMITTED TO THE RECORD AS THE LAW DIRECTS. ●
2:06 AM/PM
INSTRUMENT # 110019144 10 Large Format Plat(s) Recorded herewith as # 110019144
TESTE: Betsy B. Woolridge, Clerk By: Betsy B. Woolridge, Deputy
BETSY B. WOOLRIDGE, CLERK

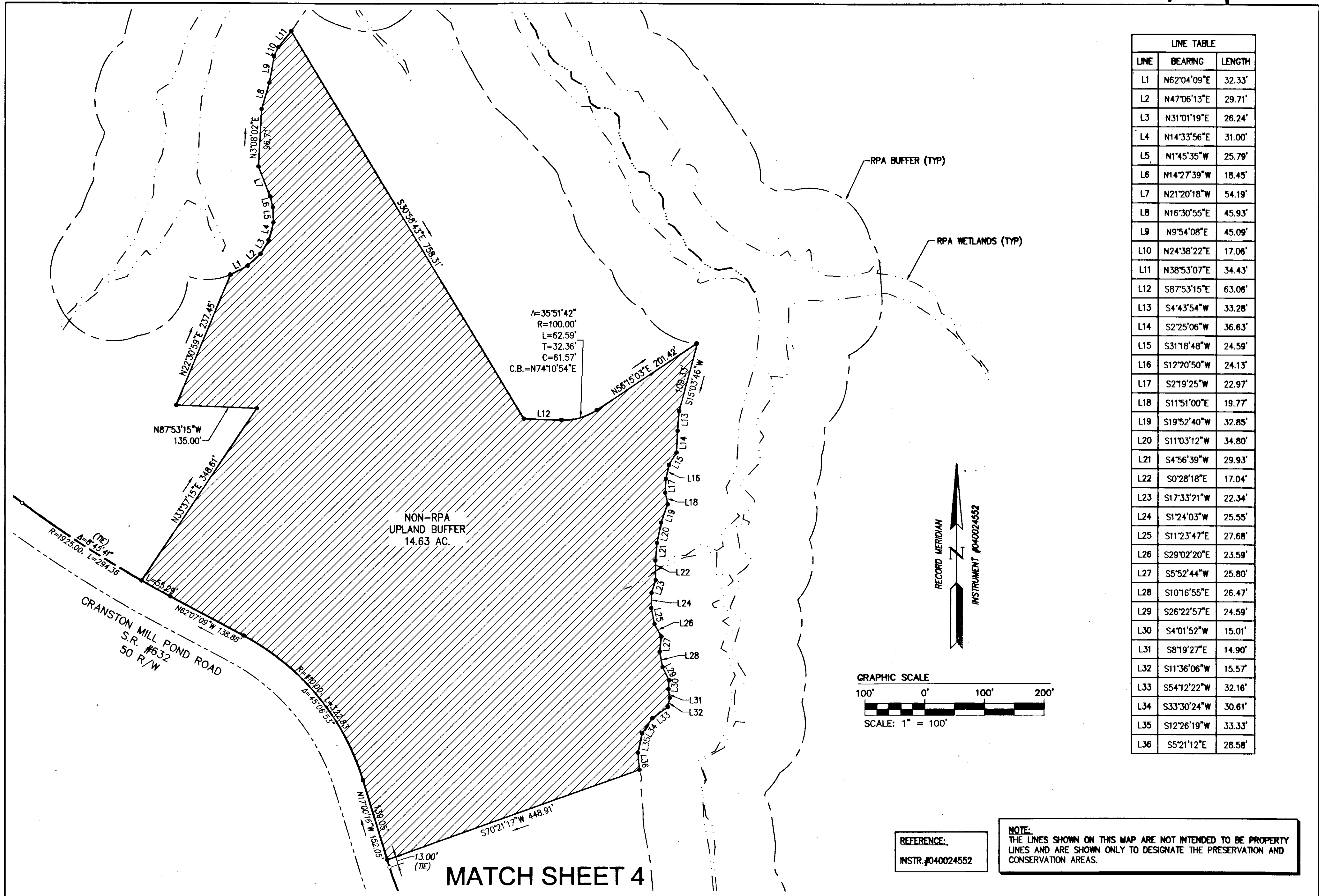
Rev	Date	Description	Revised By

AES
CONSULTING ENGINEERS
Hampton Roads | Central Virginia | Middle Peninsula
5248 Old Towne Road, Suite 1
Williamsburg, Virginia 23186
Phone: (757) 253-0040
Fax: (757) 220-8994
www.aesva.com

MAP SHOWING PRESERVATION AREAS
PHASE V AND VI
LOCATED ON THE PROPERTY OWNED BY
COLONIAL HERITAGE LLC
STONEHOUSE DISTRICT COUNTY OF JAMES CITY VIRGINIA

Project Contacts: **HWP/RWE**
Project Number: **8881-11-L**
Scale: **1"=1000'** Date: **02/07/11**
Sheet Number
1 of 10

110019144



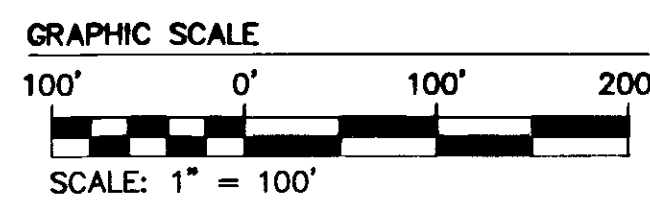
LINE TABLE		
LINE	BEARING	LENGTH
L1	N62°04'09"E	32.33'
L2	N47°06'13"E	29.71'
L3	N31°01'19"E	26.24'
L4	N14°33'56"E	31.00'
L5	N1°45'35"W	25.79'
L6	N14°27'39"W	18.45'
L7	N21°20'18"W	54.19'
L8	N16°30'55"E	45.93'
L9	N9°54'08"E	45.09'
L10	N24°38'22"E	17.06'
L11	N38°53'07"E	34.43'
L12	S87°53'15"E	63.06'
L13	S4°43'54"W	33.28'
L14	S2°25'06"W	36.63'
L15	S31°18'48"W	24.59'
L16	S12°20'50"W	24.13'
L17	S2°19'25"W	22.97'
L18	S11°51'00"E	19.77'
L19	S19°52'40"W	32.85'
L20	S11°03'12"W	34.80'
L21	S4°56'39"W	29.93'
L22	S0°28'18"E	17.04'
L23	S17°33'21"W	22.34'
L24	S1°24'03"W	25.55'
L25	S11°23'47"E	27.68'
L26	S29°02'20"E	23.59'
L27	S5°52'44"W	25.80'
L28	S10°16'55"E	26.47'
L29	S26°22'57"E	24.59'
L30	S4°01'52"W	15.01'
L31	S8°19'27"E	14.90'
L32	S11°36'06"W	15.57'
L33	S54°12'22"W	32.16'
L34	S33°30'24"W	30.61'
L35	S12°26'19"W	33.33'
L36	S5°21'12"E	28.58'

Δ=35°51'42"
 R=100.00'
 L=62.59'
 T=32.36'
 C=61.57'
 C.B.=N74°10'54"E

NON-RPA
 UPLAND BUFFER
 14.63 AC.

CRANSTON MILL POND ROAD
 S.R. #632
 50 R/W

MATCH SHEET 4



REFERENCE:
 INSTR. #040024552

NOTE:
 THE LINES SHOWN ON THIS MAP ARE NOT INTENDED TO BE PROPERTY LINES AND ARE SHOWN ONLY TO DESIGNATE THE PRESERVATION AND CONSERVATION AREAS.

Rev.	Date	Revised By

City of Williamsburg & County of James City
 Circuit Court: This PLAT was recorded on
 9/12/2011
 at 2:06 PM, PG
 DOCUMENT # 110019144
 BETSY B. WOOLRIDGE, CLERK
 Betsy B. Woolridge Clerk

10 Large/Small Plat(s) Recorded
 herewith as # 110019144

AVES
 CONSULTING ENGINEERS
 Hampton Roads | Central Virginia | Middle Peninsula

5248 Old Towne Road, Suite 1
 Williamsburg, Virginia 23188
 Phone: (757) 253-0040
 Fax: (757) 220-8994
 www.avesa.com

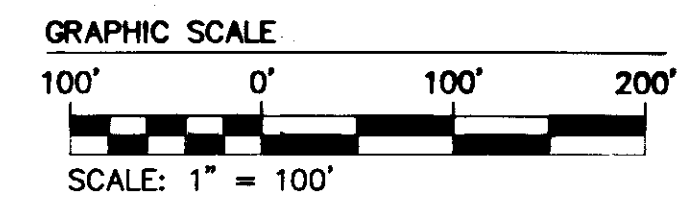
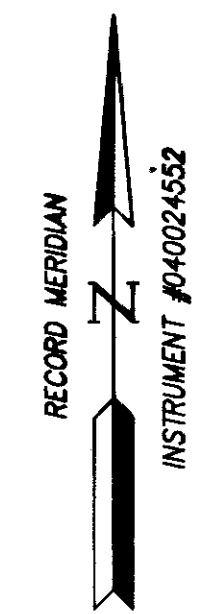
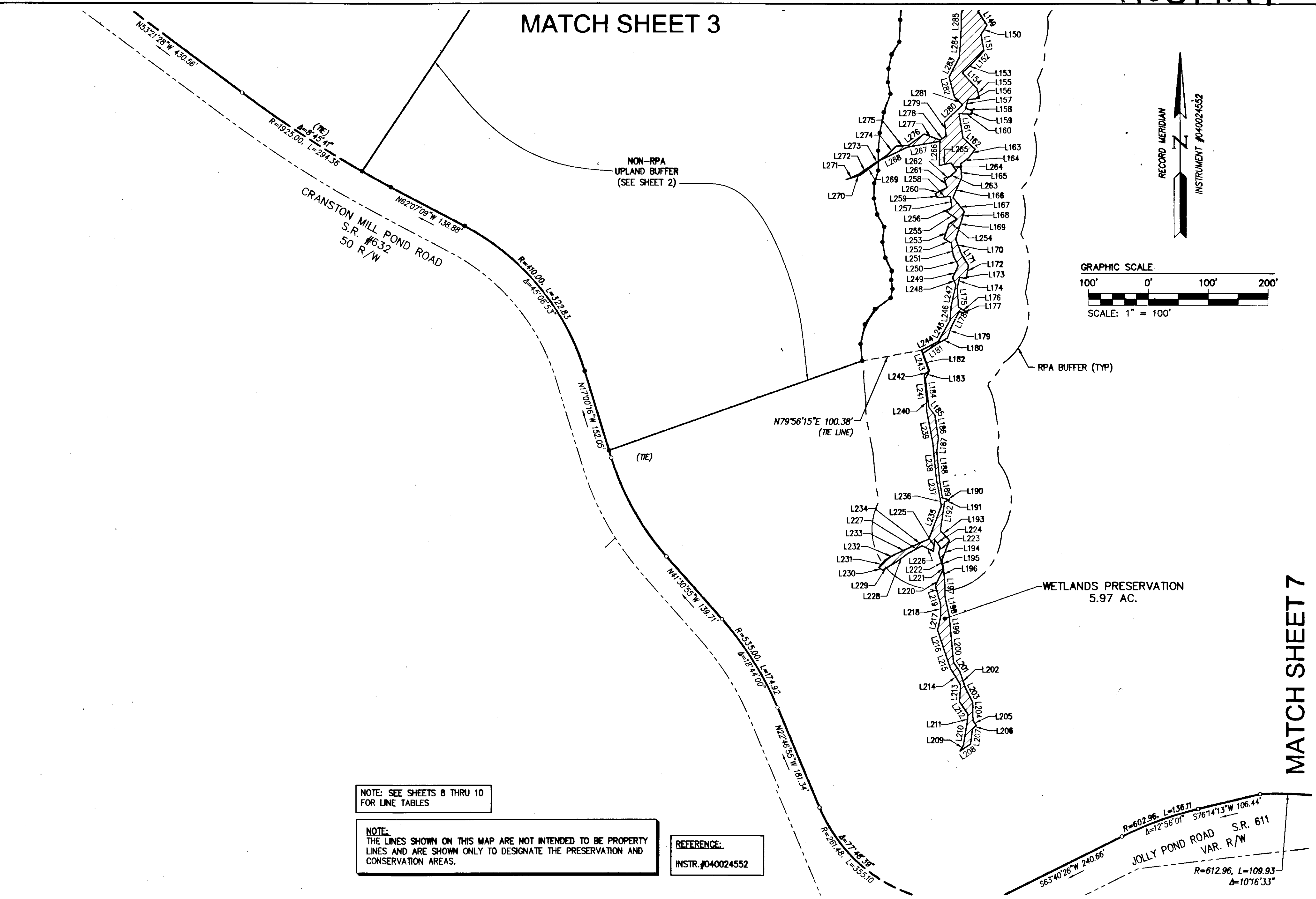
MAP SHOWING PRESERVATION AREAS
 PHASE V AND VI
 LOCATED ON THE PROPERTY OWNED BY
COLONIAL HERITAGE LLC

STONEHOUSE DISTRICT COUNTY OF JAMES CITY VIRGINIA

Project Contacts: HWP/RWE
 Project Number: 8881-11-L
 Scale: 1"=100' Date: 02/07/11
 Sheet Number
2 of 10

110019144

MATCH SHEET 3



NOTE: SEE SHEETS 8 THRU 10 FOR LINE TABLES

NOTE: THE LINES SHOWN ON THIS MAP ARE NOT INTENDED TO BE PROPERTY LINES AND ARE SHOWN ONLY TO DESIGNATE THE PRESERVATION AND CONSERVATION AREAS.

REFERENCE:
INSTR. #040024552

MATCH SHEET 7

Rev.	Date	City of Williamsburg & County of James City Circuit Court: This PLAT was recorded on 9/12/2011 at 2:06 AM PM. PG. DOCUMENT # 110019144 Betsy B. Woolridge, CLERK	Revised By
		Betsy B. Woolridge Clerk	

10 Large/Small Plat(s) Recorded herewith as # 110019144

NES
CONSULTING ENGINEERS
Hampton Roads | Central Virginia | Middle Peninsula

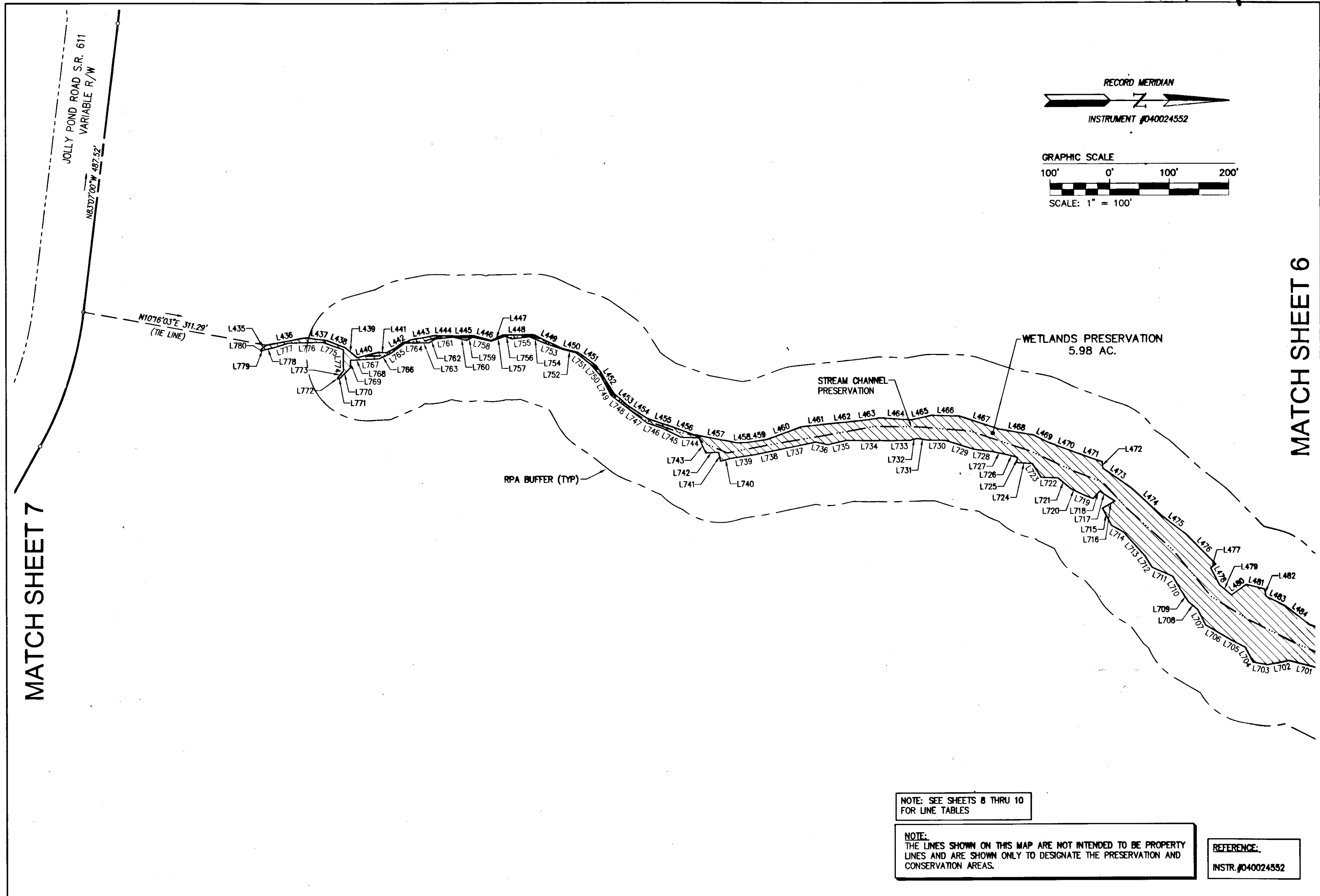
5248 Olde Towne Road, Suite 1
Williamsburg, Virginia 23188
Phone: (757) 253-0040
Fax: (757) 220-8994
www.nesva.com

MAP SHOWING PRESERVATION AREAS
PHASE V AND VI
LOCATED ON THE PROPERTY OWNED BY
COLONIAL HERITAGE LLC

STONEHOUSE DISTRICT COUNTY OF JAMES CITY VIRGINIA

Project Contacts:	HWP/RWE
Project Number:	8881-11-L
Scale:	1"=100'
Date:	02/07/11
Sheet Number	4 of 10

110019144



NOTE: SEE SHEETS 8 THRU 10
FOR LINE TABLES

NOTE:
THE LINES SHOWN ON THIS MAP ARE NOT INTENDED TO BE PROPERTY
LINES AND ARE SHOWN ONLY TO DESIGNATE THE PRESERVATION AND
CONSERVATION AREAS.

REFERENCE:
INSTR. #040024552

Rev.	Date	Revised By

City of Williamsburg & County of James City
Circuit Court: This PLAT was recorded on
9-12-2011
at 2:06 AM/PM, PG
DOCUMENT # 110019144
BETSY B. WOOLRIDGE, CLERK
Betsy B. Woolridge Clerk

10 Large Area Plat(s) Recorded
herewith as # 110019144

AES
CONSULTING ENGINEERS
Hampton Roads | Central Virginia | Middle Peninsula

5248 Old Towne Road, Suite 1
Williamsburg, Virginia 23188
Phone: (757) 253-0040
Fax: (757) 220-8994
www.aesva.com

**MAP SHOWING PRESERVATION AREAS
PHASE V AND VI
LOCATED ON THE PROPERTY OWNED BY
COLONIAL HERITAGE LLC**

STONEHOUSE DISTRICT COUNTY OF JAMES CITY VIRGINIA

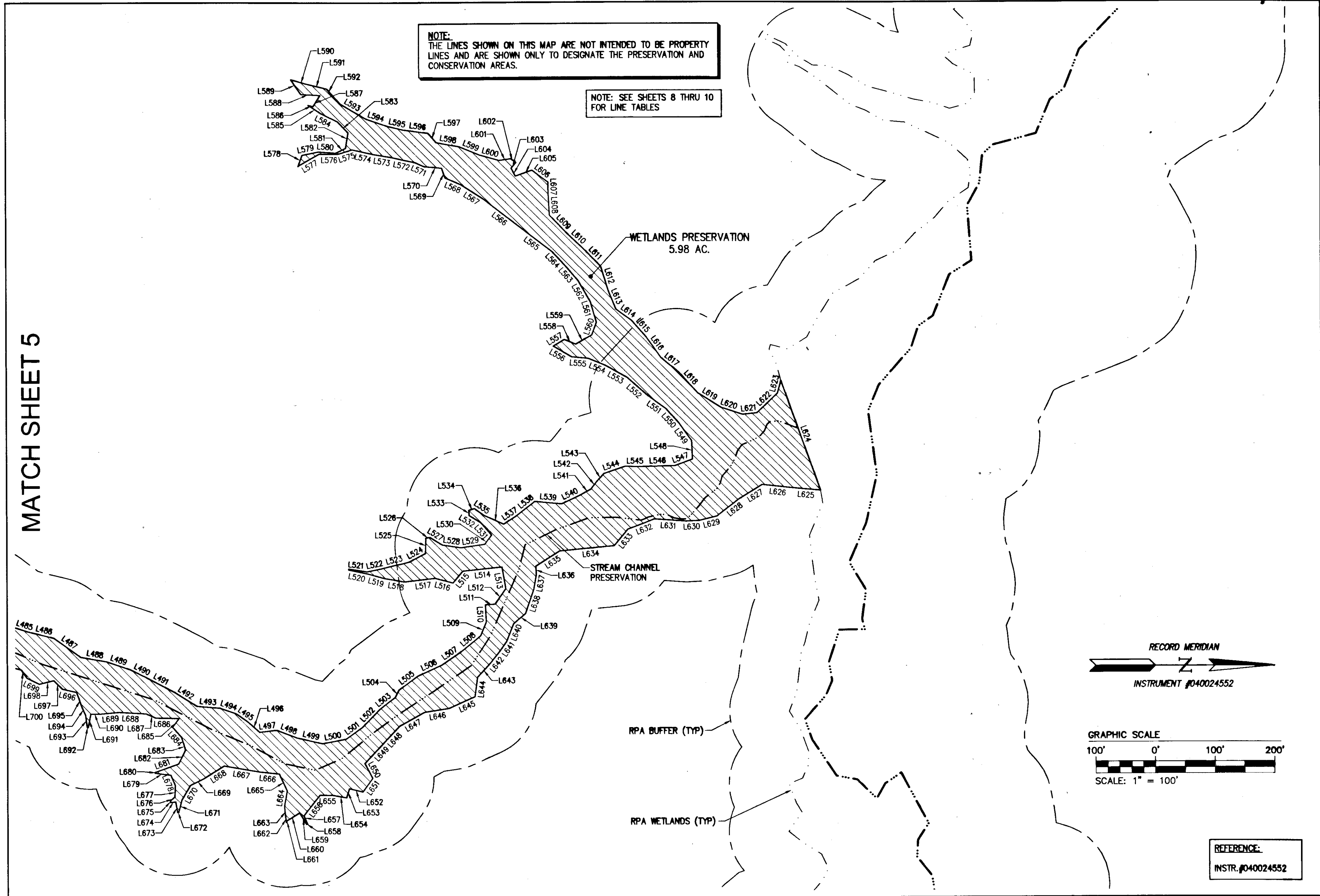
Project Contacts:	HWP/RWE
Project Number:	8881-11-L
Scale:	1"=100'
Date:	02/07/11
Sheet Number	5 of 10

110019144

MATCH SHEET 5

NOTE:
THE LINES SHOWN ON THIS MAP ARE NOT INTENDED TO BE PROPERTY LINES AND ARE SHOWN ONLY TO DESIGNATE THE PRESERVATION AND CONSERVATION AREAS.

NOTE: SEE SHEETS 8 THRU 10 FOR LINE TABLES



RECORD MERIDIAN
INSTRUMENT #040024552

GRAPHIC SCALE
100' 0' 100' 200'
SCALE: 1" = 100'

REFERENCE:
INSTR. #040024552

Rev.	Date	Description	Revised By

City of Williamsburg & County of James City
Circuit Court: This PLAT was recorded on
9-12-2011
at 2:06 PM, PG
DOCUMENT # 110019144
BETSY B. WOOLRIDGE, CLERK
Betsy B. Woolridge, Clerk

10 Large Maps Plat(s) Recorded
herewith as # 110019144

AES
CONSULTING ENGINEERS
Hampton Roads | Central Virginia | Middle Peninsula

5248 Olde Towne Road, Suite 1
Williamsburg, Virginia 23188
Phone: (757) 253-0040
Fax: (757) 220-8994
www.aesva.com

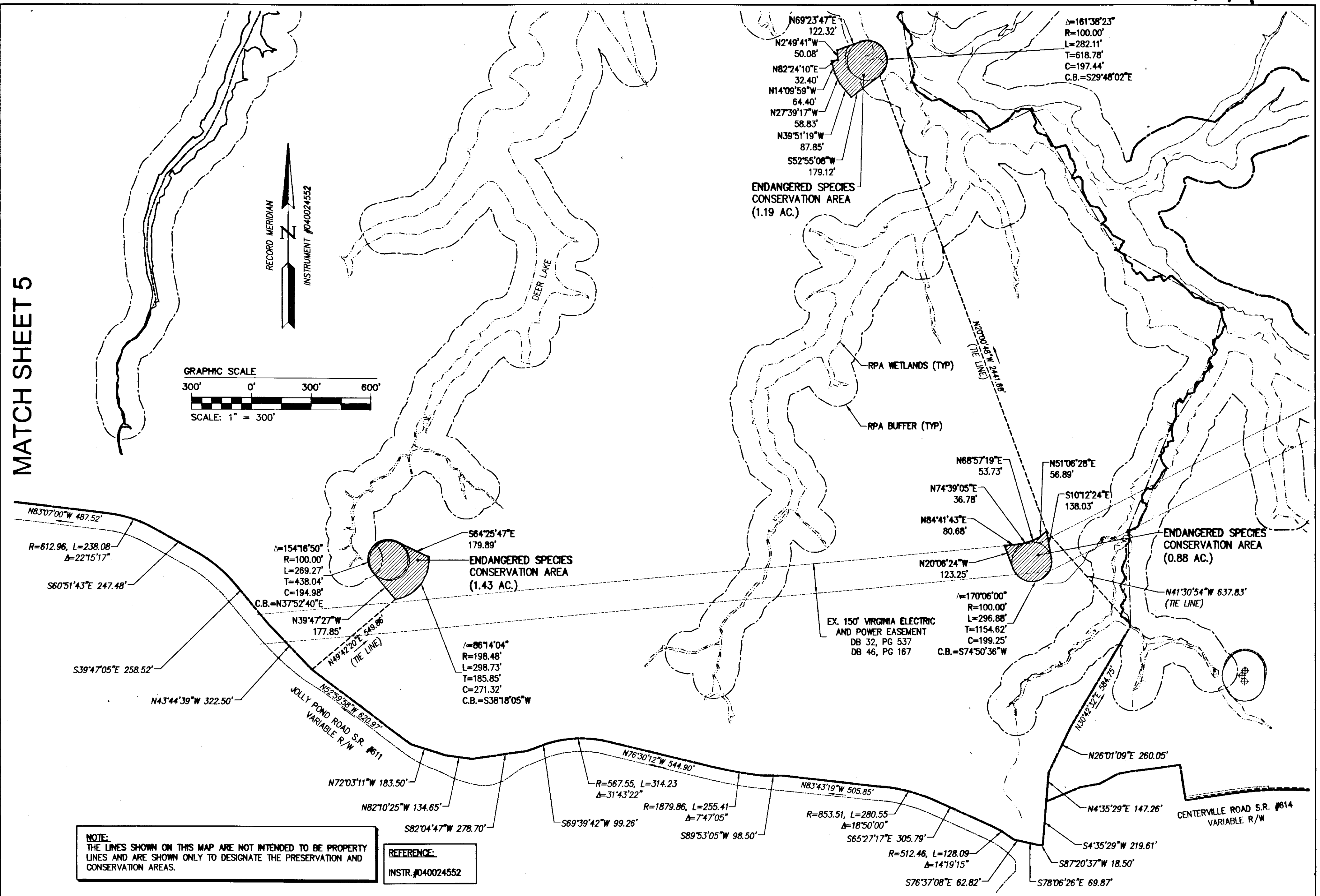
**MAP SHOWING PRESERVATION AREAS
PHASE V AND VI
LOCATED ON THE PROPERTY OWNED BY
COLONIAL HERITAGE LLC**

STONEHOUSE DISTRICT COUNTY OF JAMES CITY VIRGINIA

Project Contacts:	HWP/RWE
Project Number:	8881-11-L
Scale:	Date:
1"=100'	02/07/11
Sheet Number	
6 of 10	

110019144

MATCH SHEET 5



NOTE:
THE LINES SHOWN ON THIS MAP ARE NOT INTENDED TO BE PROPERTY LINES AND ARE SHOWN ONLY TO DESIGNATE THE PRESERVATION AND CONSERVATION AREAS.

REFERENCE:
INSTR. #040024552

City of Williamsburg & County of James City Circuit Court: This PLAT was recorded on at 2:06 AM PM, PG = DOCUMENT # 110019144 BETSY B. WOOLRIDGE, CLERK <i>Betsy B. Woolridge</i> Clerk	10 Plat(s) Recorded 110019144		
Rev.	Date	Description	Revised By

AES
CONSULTING ENGINEERS
Hampton Roads | Central Virginia | Middle Peninsula

5248 Old Towne Road, Suite 1
Williamsburg, Virginia 23188
Phone: (757) 253-0040
Fax: (757) 220-8994
www.aesva.com

**MAP SHOWING PRESERVATION AREAS
PHASE V AND VI
LOCATED ON THE PROPERTY OWNED BY
COLONIAL HERITAGE LLC**

STONEHOUSE DISTRICT COUNTY OF JAMES CITY VIRGINIA

Project Contacts: HWP/RWE
Project Number: 8881-11-L
Scale: 1"=300'
Date: 02/07/11
Sheet Number
7 of 10

LINE TABLE		
LINE	BEARING	LENGTH
L37	N69°45'09"E	131.34'
L38	S59°28'01"E	25.61'
L39	S62°54'05"E	40.49'
L40	S64°24'42"E	32.41'
L41	S87°02'37"E	18.44'
L42	S37°04'30"E	28.01'
L43	S67°33'16"E	33.08'
L44	S74°43'58"W	41.53'
L45	S43°53'51"W	23.39'
L46	S23°52'21"W	44.10'
L47	S4°56'34"W	43.93'
L48	S12°32'32"W	42.14'
L49	S4°30'28"E	35.34'
L50	S37°44'32"E	49.40'
L51	S41°03'31"E	25.86'
L52	S63°00'28"E	35.05'
L53	S80°59'35"E	46.03'
L54	N75°59'14"E	19.86'
L55	S10°34'16"E	17.02'
L56	S3°30'25"E	27.26'
L57	S46°03'46"E	33.76'
L58	S27°46'12"E	28.25'
L59	S52°25'39"E	34.38'
L60	S50°53'49"E	41.06'
L61	S51°34'42"E	37.23'
L62	N87°53'51"E	24.76'
L63	S38°33'51"E	38.07'
L64	S87°01'17"E	20.74'
L65	N2°18'18"W	29.98'
L66	N85°36'20"E	10.65'
L67	S30°38'37"E	26.92'
L68	S43°29'00"W	17.67'
L69	S55°17'47"E	24.46'
L70	S57°05'33"E	41.10'
L71	S81°19'35"E	37.17'
L72	N78°04'03"E	27.75'
L73	S32°20'05"E	27.84'
L74	S68°49'09"E	49.81'

LINE TABLE		
LINE	BEARING	LENGTH
L75	N72°02'44"E	28.63'
L76	S24°24'38"E	24.42'
L77	N69°55'51"E	24.21'
L78	N42°18'56"E	11.86'
L79	S25°20'14"W	7.98'
L80	S49°51'34"W	29.14'
L81	S39°32'15"E	30.69'
L82	S25°36'29"E	28.59'
L83	S56°04'17"E	43.87'
L84	S37°27'59"E	37.83'
L85	N42°28'23"E	32.94'
L86	S42°33'52"E	13.21'
L87	S15°08'49"E	16.53'
L88	S48°26'59"W	33.14'
L89	S19°41'10"E	29.34'
L90	S26°06'19"E	25.77'
L91	S49°01'16"E	37.03'
L92	S13°23'14"E	24.24'
L93	S39°35'00"E	39.10'
L94	S36°06'45"E	32.72'
L95	S84°19'51"E	33.23'
L96	S28°50'48"E	23.47'
L97	S50°38'48"E	26.34'
L98	S34°09'34"E	68.78'
L99	S31°33'08"W	34.44'
L100	N85°36'44"E	32.88'
L101	S59°56'07"E	10.83'
L102	S28°38'01"E	17.18'
L103	S25°16'26"W	27.44'
L104	S33°22'52"E	36.08'
L105	S43°07'33"E	41.82'
L106	S54°36'01"E	36.02'
L107	S62°11'59"E	35.94'
L108	S70°40'06"E	36.25'
L109	N54°10'13"E	18.53'
L110	S32°26'11"E	20.82'
L111	N51°31'51"E	32.52'
L112	S28°55'16"E	5.87'

LINE TABLE		
LINE	BEARING	LENGTH
L113	S5°41'56"E	27.23'
L114	S62°09'35"E	25.32'
L115	S86°54'22"E	35.63'
L116	N76°40'18"E	38.42'
L117	N37°36'45"E	28.16'
L118	S34°53'23"E	5.31'
L119	S19°59'21"W	22.24'
L120	S82°15'45"E	23.46'
L121	S72°58'42"E	41.05'
L122	S58°43'51"E	40.05'
L123	S19°52'41"E	33.16'
L124	S60°38'53"E	22.81'
L125	S14°03'53"E	24.03'
L126	S36°59'16"E	34.76'
L127	S49°02'03"E	21.68'
L128	S36°24'32"E	25.12'
L129	S37°10'35"E	15.60'
L130	N26°41'56"W	30.88'
L131	N46°36'02"W	26.11'
L132	N38°26'50"W	38.73'
L133	N50°46'57"W	55.54'
L134	N57°07'09"W	34.82'
L135	N68°43'17"W	44.89'
L136	S82°34'24"W	33.40'
L137	S82°43'00"W	45.19'
L138	S84°17'58"W	31.77'
L139	N87°44'49"W	33.62'
L140	S59°30'02"W	23.50'
L141	S07°3'50"W	24.77'
L142	S5°42'50"W	40.51'
L143	S8°03'19"E	27.60'
L144	S7°42'06"W	26.66'
L145	N83°38'16"W	26.65'
L146	S10°44'34"E	31.00'
L147	S34°30'55"W	23.25'
L148	S33°01'30"W	35.06'
L149	S33°37'28"E	27.10'
L150	S32°23'09"W	18.41'

LINE TABLE		
LINE	BEARING	LENGTH
L151	S10°06'34"E	27.46'
L152	S42°45'20"W	31.59'
L153	S46°42'38"W	20.26'
L154	S43°28'27"E	36.18'
L155	S12°15'16"E	16.68'
L156	S82°19'11"W	19.12'
L157	S13°14'02"W	14.57'
L158	S67°55'15"E	11.54'
L159	S12°23'26"W	5.80'
L160	N87°00'54"W	20.86'
L161	S9°06'06"E	41.09'
L162	S46°52'35"E	27.89'
L163	S37°58'19"W	17.74'
L164	S52°14'24"W	16.88'
L165	S4°33'34"E	22.68'
L166	S23°21'11"W	36.58'
L167	S38°22'21"E	30.18'
L168	S16°57'37"W	11.15'
L169	S17°19'05"W	37.11'
L170	S21°09'50"E	27.73'
L171	S31°56'59"E	21.28'
L172	S10°06'06"W	22.53'
L173	N77°26'04"W	10.91'
L174	S13°07'44"W	17.31'
L175	S37°10'05"E	32.67'
L176	S56°31'54"E	18.37'
L177	N82°01'17"W	14.39'
L178	S27°23'59"W	25.66'
L179	S20°01'49"W	22.60'
L180	S60°19'35"W	21.21'
L181	S56°21'18"W	26.61'
L182	S20°08'20"E	31.01'
L183	S26°05'54"W	15.41'
L184	S7°16'14"E	48.15'
L185	S37°46'49"E	15.93'
L186	S8°12'45"E	39.15'
L187	S6°19'02"W	22.05'
L188	S5°32'51"E	48.70'

LINE TABLE		
LINE	BEARING	LENGTH
L189	S9°11'45"E	30.11'
L190	S75°09'45"E	12.18'
L191	S68°02'34"W	8.70'
L192	S8°39'19"W	48.42'
L193	S42°58'07"E	22.45'
L194	S21°03'44"W	34.74'
L195	S7°42'22"E	15.42'
L196	S7°42'22"E	16.55'
L197	S1°38'42"E	32.01'
L198	S13°13'42"E	29.87'
L199	S4°56'28"E	39.25'
L200	S5°22'48"E	39.32'
L201	S34°19'07"E	18.73'
L202	S18°25'01"E	28.88'
L203	S27°02'55"E	27.27'
L204	S0°58'19"E	30.64'
L205	S33°56'56"E	9.63'
L206	S47°27'00"W	8.44'
L207	S7°17'10"W	25.57'
L208	S56°34'24"W	21.20'
L209	N30°51'52"E	11.13'
L210	N9°06'57"E	40.01'
L211	N5°50'06"E	12.61'
L212	N34°18'28"W	25.05'
L213	N3°33'02"E	28.32'
L214	N31°36'00"W	31.73'
L215	N18°56'10"W	31.76'
L216	N18°07'55"W	36.79'
L217	N12°51'11"E	23.09'
L218	N0°19'00"W	20.84'
L219	N16°12'51"W	31.81'
L220	N25°45'50"E	30.34'
L221	N8°41'22"W	3.33'
L222	N16°15'40"W	25.29'
L223	N14°15'48"E	10.43'
L224	N36°55'11"W	15.19'
L225	S6°03'44"W	19.44'
L226	N64°03'30"W	20.88'

LINE TABLE		
LINE	BEARING	LENGTH
L227	S61°44'27"W	26.72'
L228	S53°21'44"W	22.76'
L229	S59°37'53"W	28.30'
L230	N53°23'00"W	7.77'
L231	N40°28'12"E	16.62'
L232	N61°36'14"E	19.47'
L233	N65°07'25"E	29.76'
L234	N65°38'04"E	31.37'
L235	N20°42'33"E	59.08'
L236	N10°25'18"W	20.21'
L237	N10°50'45"W	24.78'
L238	N5°31'37"W	60.30'
L239	N10°43'51"W	58.40'
L240	N0°10'18"E	19.13'
L241	N5°28'20"W	37.82'
L242	N42°13'03"E	10.69'
L243	N19°10'27"W	36.00'
L244	N62°08'34"E	32.09'
L245	N28°42'20"E	39.86'
L246	N4°52'55"E	24.06'
L247	N12°33'09"E	36.05'
L248	N23°40'34"W	13.57'
L249	N25°42'42"E	22.20'
L250	N27°41'57"W	18.11'
L251	N9°11'59"W	21.61'
L252	N58°03'36"W	14.32'
L253	N18°34'30"E	25.78'
L254	N58°14'03"E	15.92'
L255	N55°10'14"W	23.30'
L256	N58°12'15"E	12.43'
L257	N9°20'51"W	18.60'
L258	S83°38'06"W	21.43'
L259	N28°19'14"W	7.70'
L260	N63°00'13"E	22.17'
L261	N16°46'46"W	16.87'
L262	N77°06'46"E	10.05'
L263	N47°15'51"E	14.52'
L264	N33°52'37"W	15.71'

LINE TABLE		
LINE	BEARING	LENGTH
L265	S77°23'32"W	20.11'
L266	N1°33'07"E	40.37'
L267	S79°53'13"W	55.39'
L268	S64°16'02"W	51.69'
L269	S52°50'56"W	36.56'
L270	S71°56'06"W	25.69'
L271	N68°21'06"E	19.26'
L272	N55°50'24"E	28.18'
L273	N56°30'25"E	14.80'
L274	N47°02'19"E	22.29'
L275	N85°38'42"E	20.73'
L276	N54°07'44"E	32.07'
L277	S68°34'32"E	28.16'
L278	N55°34'45"E	12.66'
L279	N7°23'30"W	22.91'
L280	N46°01'46"E	42.05'
L281	N44°47'02"W	19.42'
L282	N15°05'16"W	34.11'
L283	N27°31'50"E	37.66'
L284	N3°36'57"E	39.89'
L285	N1°09'46"E	32.84'
L286	N13°52'00"E	35.76'
L287	N15°44'59"E	77.07'
L288	N5°51'23"E	45.26'
L289	N1°17'27"E	31.55'
L290	N9°33'23"W	44.42'
L291	N62°30'08"W	36.01'
L292	S88°35'09"W	36.34'
L293	S72°01'58"W	24.65'
L294	N64°07'02"W	5.20'
L295	N21°53'05"E	15.17'
L296	N58°20'20"W	37.97'
L297	N61°04'20"W	21.22'
L298	N0°45'07"W	20.13'
L299	N46°27'57"W	60.11'
L300	N38°45'44"W	28.46'
L301	N13°04'53"W	33.67'
L302	N27°39'40"W	37.02'

LINE TABLE		
LINE	BEARING	LENGTH
L303	N17°10'16"W	35.67'
L304	N36°09'50"W	38.28'
L305	N23°24'27"W	38.80'
L306	S88°50'33"W	16.96'
L307	N42°03'01"W	52.94'
L308	N48°25'12"W	40.54'
L309	N32°12'12"W	36.22'
L310	N28°32'55"W	39.56'
L311	N20°45'21"W	71.49'
L312	N47°03'56"W	81.74'
L313	N44°02'18"W	44.16'
L314	N74°20'30"W	37.51'
L315	S89°03'59"W	39.56'
L316	S71°10'58"W	22.18'
L317	S53°55'45"W	24.41'
L318	S27°14'26"W	42.17'
L319	S27°23'37"W	33.95'
L320	S0°13'35"E	43.18'
L321	S35°53'16"E	47.26'
L322	S45°59'27"E	69.68'
L323	S17°54'26"E	39.56'
L324	N29°13'25"W	33.66'
L325	N44°19'44"W	40.30'
L326	N41°02'34"W	48.23'
L327	N35°06'19"W	30.66'
L328	N10°00'07"W	34.95'
L329	N3°15'25"E	33.24'
L330	N11°49'00"E	50.79'
L331	N18°46'09"E	19.82'
L332	N21°20'16"W	36.10'
L333	N52°26'04"W	43.51'
L334	N70°31'35"W	45.38'
L335	S89°40'38"W	24.79'
L336	S23°45'06"W	79.49'
L337	S20°34'09"W	51.43'
L338	S29°16'35"W	37.30'
L339	S34°11'03"W	38.24'
L340	S39°21'58"W	39.79'

City of Williamsburg & County of James City Circuit Court: This PLAT was recorded on 9-12-2011 at 2:06 PM. PG. -- DOCUMENT # 110019144 BETSY B. WOOLRIDGE, CLERK <i>Betsy B. Woolridge</i> Clerk	Rev. Date	Revised By
--	-----------	------------

10
Plat(s) Recorded
110019144



5248 Old Towne Road, Suite 1
Williamsburg, Virginia 23188
Phone: (757) 253-0040
Fax: (757) 220-8994
www.aesva.com

110019144

LINE TABLE			LINE TABLE			LINE TABLE			LINE TABLE			LINE TABLE			LINE TABLE			LINE TABLE			LINE TABLE		
LINE	BEARING	LENGTH	LINE	BEARING	LENGTH	LINE	BEARING	LENGTH	LINE	BEARING	LENGTH	LINE	BEARING	LENGTH	LINE	BEARING	LENGTH	LINE	BEARING	LENGTH	LINE	BEARING	LENGTH
L341	S24°38'22"W	43.35'	L379	N24°45'26"E	32.71'	L417	N43°54'36"W	42.07'	L455	N18°24'43"E	45.24'	L493	N4°57'16"E	39.01'	L531	S49°21'59"W	27.08'	L569	S69°59'32"W	17.56'	L607	N88°42'22"E	17.82'
L342	S9°54'08"W	52.37'	L380	N8°13'05"E	46.56'	L418	N82°25'35"W	22.91'	L456	N20°26'46"E	34.72'	L494	N18°36'41"E	28.33'	L532	S31°33'51"W	23.40'	L570	S5°17'43"W	28.95'	L608	N86°44'48"E	38.05'
L343	S16°30'55"W	50.83'	L381	N10°10'06"W	38.18'	L419	S71°21'54"W	38.70'	L457	N10°37'15"E	75.06'	L495	N35°07'28"E	23.73'	L533	S88°03'02"W	8.69'	L571	S24°23'51"W	16.26'	L609	N46°29'33"E	41.26'
L344	S4°25'10"W	44.81'	L382	N52°39'16"W	14.50'	L420	N48°08'22"W	41.61'	L458	N2°48'45"W	17.60'	L496	N41°23'34"E	26.26'	L534	N17°05'31"W	9.50'	L572	S12°01'29"W	38.55'	L610	N43°27'36"E	38.78'
L345	S1°49'48"W	45.84'	L383	N17°03'06"E	14.55'	L421	N57°36'21"W	13.46'	L459	N8°47'48"W	31.92'	L497	N6°39'42"W	28.95'	L535	N34°26'55"E	20.13'	L573	S9°33'35"W	33.75'	L611	N45°33'56"E	40.86'
L346	S4°05'25"W	39.36'	L384	N56°48'08"E	26.12'	L422	N87°12'33"W	17.04'	L460	N20°09'52"W	62.17'	L498	N20°42'57"E	36.88'	L536	N24°28'31"E	35.56'	L574	S12°40'47"W	36.13'	L612	N72°48'09"E	43.36'
L347	S20°14'06"E	57.66'	L385	N22°46'43"E	36.94'	L423	N11°11'25"E	3.48'	L461	N6°25'54"W	46.84'	L499	N12°31'29"E	43.05'	L537	N32°56'22"W	24.07'	L575	S17°39'59"E	25.47'	L613	N67°31'21"E	33.13'
L348	S23°37'48"E	49.72'	L386	N15°39'46"E	48.55'	L424	N83°05'08"E	33.82'	L462	N5°38'49"W	45.12'	L500	N10°40'22"W	40.29'	L538	N37°29'58"W	40.50'	L576	S0°28'43"W	31.02'	L614	N36°01'27"E	31.65'
L349	S22°55'30"E	20.05'	L387	N31°15'58"E	34.12'	L425	N12°05'17"E	16.92'	L463	N6°53'50"W	40.61'	L501	N36°01'00"W	34.00'	L539	N5°24'19"E	45.25'	L577	S30°23'44"E	40.53'	L615	N48°36'59"E	38.59'
L350	S21°02'09"W	11.73'	L388	N24°42'56"E	49.26'	L426	N46°27'03"E	31.80'	L464	N3°58'26"E	51.69'	L502	N45°40'48"W	42.12'	L540	N25°18'48"W	32.60'	L578	N70°56'23"W	19.69'	L616	N54°36'47"E	42.03'
L351	N33°20'39"W	18.55'	L389	N33°02'42"E	54.81'	L427	N34°30'09"E	42.34'	L465	N12°22'23"W	35.06'	L503	N37°56'47"W	32.58'	L541	N28°23'33"W	21.94'	L579	N11°32'46"W	27.92'	L617	N39°28'25"E	37.18'
L352	N24°45'21"W	32.20'	L390	N27°16'06"E	51.80'	L428	N10°41'01"E	42.55'	L466	N1°36'26"E	46.45'	L504	N63°05'46"W	14.34'	L542	N52°17'26"W	17.04'	L580	N3°48'02"E	29.16'	L618	N47°32'54"E	48.01'
L353	N11°46'43"W	28.79'	L391	N30°55'51"E	42.26'	L429	N0°28'23"W	31.63'	L467	N18°17'52"E	69.34'	L505	N36°39'57"W	39.21'	L543	N47°20'18"W	17.31'	L581	N25°49'02"W	18.64'	L619	N31°47'19"E	46.45'
L354	S67°25'39"W	8.57'	L392	N1°05'10"W	33.92'	L430	N19°59'01"W	29.54'	L468	N10°17'41"E	60.35'	L506	N24°28'39"W	44.37'	L544	N18°44'57"W	36.93'	L582	N80°56'42"W	26.26'	L620	N17°54'54"E	37.26'
L355	N7°02'55"W	6.11'	L393	N66°21'54"E	13.77'	L431	N55°05'10"W	29.44'	L469	N26°45'20"E	26.78'	L507	N34°06'19"W	39.10'	L545	N0°40'56"E	32.68'	L583	S46°01'29"W	25.43'	L621	N5°49'44"W	24.35'
L356	N63°15'22"W	23.55'	L394	N2°27'56"E	30.65'	L432	N65°22'21"W	32.60'	L470	N20°37'23"E	53.49'	L508	N39°07'01"W	42.25'	L546	N1°32'32"W	51.27'	L584	S26°14'21"W	31.09'	L622	N43°47'08"W	47.51'
L357	S35°16'44"W	24.53'	L395	N4°38'30"W	31.21'	L433	N39°46'24"W	27.00'	L471	N19°51'05"E	39.32'	L509	N67°49'47"W	24.86'	L547	N20°14'27"W	31.45'	L585	S33°40'38"W	25.46'	L623	N74°54'11"W	21.92'
L358	S29°16'02"W	32.60'	L396	N24°14'57"W	29.62'	L434	N49°42'45"W	33.81'	L472	N83°41'15"E	11.59'	L510	S87°35'50"W	28.93'	L548	S87°36'41"W	31.16'	L586	N14°31'25"E	8.59'	L624	N70°14'26"E	195.32'
L359	S34°21'38"W	40.20'	L397	N57°11'33"W	43.44'	L435	N38°42'56"W	12.54'	L473	N34°29'34"E	58.50'	L511	N3°44'49"W	16.21'	L549	S54°43'02"W	36.76'	L587	N58°37'30"W	21.85'	L625	S4°48'23"W	49.15'
L360	S42°23'57"W	14.42'	L398	N40°09'17"W	51.62'	L436	N10°45'16"W	66.67'	L474	N42°27'22"E	70.11'	L512	N55°14'32"W	31.68'	L550	S47°36'17"W	32.26'	L588	S2°47'51"W	31.97'	L626	S6°12'15"W	49.09'
L361	N39°27'40"W	10.40'	L399	N63°09'59"W	48.02'	L437	N6°55'13"E	35.58'	L475	N37°11'51"E	49.61'	L513	S79°52'36"W	36.71'	L551	S36°03'03"W	38.90'	L589	S55°43'47"W	30.02'	L627	S31°55'38"E	45.88'
L362	S41°40'51"W	25.04'	L400	S64°24'06"W	24.40'	L438	N21°00'49"E	33.47'	L476	N45°20'49"E	70.84'	L514	S5°33'47"E	65.79'	L552	S41°29'00"W	44.55'	L590	N15°47'42"E	26.00'	L628	S37°46'10"E	46.86'
L363	S31°23'56"W	29.49'	L401	S66°51'15"W	30.18'	L439	N39°40'53"E	26.22'	L477	S37°10'20"E	10.99'	L515	S50°18'09"E	25.90'	L553	S29°16'10"W	43.72'	L591	N13°30'24"E	35.81'	L629	S14°02'06"E	30.17'
L364	S73°45'57"W	34.03'	L402	S19°16'26"W	27.93'	L440	N14°20'02"W	37.31'	L478	N62°09'22"E	32.01'	L516	S14°52'16"W	31.17'	L554	S21°54'24"W	28.75'	L592	N48°04'49"E	33.87'	L630	S2°51'57"E	22.11'
L365	S45°05'17"W	27.87'	L403	S2°43'13"E	36.58'	L441	N3°12'01"E	12.81'	L479	N40°28'13"E	26.15'	L517	S6°24'18"E	51.30'	L555	S5°40'42"W	27.84'	L593	N30°25'27"E	50.56'	L631	S3°53'47"W	53.40'
L366	S52°33'14"W	36.73'	L404	S40°09'21"W	33.02'	L442	N27°48'29"W	45.22'	L480	N35°40'57"W	30.48'	L518	S8°41'34"W	33.79'	L556	S30°21'26"W	35.87'	L594	N18°40'54"E	37.98'	L632	S20°47'43"E	48.03'
L367	S33°59'23"W	50.64'	L405	N29°07'03"W	23.68'	L443	N9°57'08"W	40.81'	L481	N13°38'08"E	31.63'	L519	S15°39'35"W	28.44'	L557	N30°45'11"W	21.48'	L595	N12°19'07"E	27.15'	L633	S50°16'05"E	35.67'
L368	N0°17'28"W	21.40'	L406	N61°21'49"W	29.17'	L444	N1°10'08"E	35.90'	L482	N77°47'36"E	12.66'	L520	S12°03'05"W	33.75'	L558	N22°01'23"E	20.67'	L596	N7°52'35"E	41.63'	L634	S5°15'04"E	91.93'
L369	N46°40'07"E	32.57'	L407	S58°55'00"W	32.04'	L445	N0°43'33"W	30.31'	L483	N26°04'09"E	35.72'	L521	N5°54'43"E	30.71'	L559	N29°28'24"W	31.02'	L597	N49°09'17"E	20.79'	L635	S32°32'45"E	47.15'
L370	N25°19'56"E	13.75'	L408	S58°56'45"W	28.56'	L446	N15°35'30"E	30.16'	L484	N37°37'20"E	51.51'	L522	N11°12'08"W	24.01'	L560	N70°21'05"W	22.70'	L598	N10°24'44"E	39.27'	L636	N86°47'49"E	14.21'
L371	N62°40'48"E	29.72'	L409	N13°03'23"E	10.33'	L447	N24°04'00"W	21.86'	L485	N18°13'36"E	32.73'	L523	N14°13'04"W	49.37'	L561	S74°01'48"W	35.20'	L599	N22°21'29"E	36.89'	L637	S79°56'22"E	24.42'
L372	N32°34'53"E	26.87'	L410	N19°47'19"E	18.35'	L448	N0°03'59"W	51.16'	L486	N13°44'49"E	45.04'	L524	N27°45'48"W	30.52'	L562	S60°13'56"W	40.89'	L600	N15°45'42"E	33.41'	L638	S71°15'07"E	43.51'
L373	N64°43'22"E	19.15'	L411	S84°14'03"E	17.82'	L449	N25°27'20"E	53.17'	L487	N35°37'17"E	55.28'	L525	N88°20'32"W	23.36'	L563	S49°39'07"W	33.60'	L601	N7°18'07"W	19.98'	L639	S40°13'38"E	26.34'
L374	N22°31'21"E	20.33'	L412	N48°58'19"E	18.45'	L450	N13°56'47"E	27.03'	L488	N9°59'06"E	43.45'	L526	N9°39'22"W	6.92'	L564	S47°05'07"W	32.31'	L602	N33°49'26"E	10.54'	L640	S68°21'09"E	31.58'
L375	N36°42'25"E	45.62'	L413	N18°36'52"W	36.71'	L451	N36°16'29"E	37.78'	L489	N18°49'36"E	42.47'	L527	N31°02'04"E	24.79'	L565	S37°35'24"W	71.75'	L603	S50°05'38"E	12.79'	L641	S54°57'06"E	21.23'
L376	N20°20'16"E	39.71'	L414	N43°33'31"E	42.78'	L452	N57°53'43"E	55.48'	L490	N26°19'01"E	31.92'	L528	N8°32'13"E	31.24'	L566	S37°54'37"W	74.11'	L604	N61°43'02"E	14.94'	L642	S51°29'22"E	25.40'
L377	N25°29'29"E	41.36'	L415	N36°32'51"E	55.20'	L453	N40°22'03"E	33.48'	L491	N27°38'31"E	49.57'	L529	N8°00'48"W	39.97'	L567	S32°56'52"W	43.92'	L605	N18°59'34"W	29.42'	L643	S46°58'10"E	30.92'
L378	N1°02'24"E	38.47'	L416	N15°29'28"W	22.36'	L454	N33°04'29"E	38.04'	L492	N32°08'40"E	46.13'	L530	N52°56'22"W	19.30'	L568	S23°09'57"W	28.70'	L606	N36°36'18"E	33.19'	L644	S82°31'09"E	33.14'

City of Williamsburg and County of James City
 Circuit Court: This PLAT was recorded on
9-12-2011
 at 2:06 PM PG 110019144
 DOCUMENT # 110019144
 BETSY B. WOOLRIDGE, CLERK
Betsy B. Woolridge Clerk

Rev	Date	Description	Revised By

10 Large Small Plat(s) Recorded
 hereon as # 110019144

AES
 CONSULTING ENGINEERS
 Hampton Roads | Central Virginia | Middle Peninsula

5248 Old Towne Road, Suite 1
 Williamsburg, Virginia 23188
 Phone: (757) 253-0040
 Fax: (757) 220-8994
 www.aesva.com

MAP SHOWING PRESERVATION AREAS
 PHASE V AND VI
 LOCATED ON THE PROPERTY OWNED BY
COLONIAL HERITAGE LLC

STONEHOUSE DISTRICT COUNTY OF JAMES CITY VIRGINIA

Project Contacts: **HWP/RWE**
 Project Number: **8861-11-L**
 Scale: **1"=100'** Date: **02/07/11**
 Sheet Number
9 of 10

110019144

LINE TABLE		
LINE	BEARING	LENGTH
L645	S24°17'08"E	47.68'
L646	S8°37'56"E	41.75'
L647	S29°04'02"E	47.28'
L648	S47°07'19"E	37.69'
L649	S46°34'15"E	48.67'
L650	N61°51'32"E	28.14'
L651	S53°56'42"E	28.35'
L652	S14°21'55"W	23.16'
L653	S72°42'39"E	16.15'
L654	S9°55'52"W	22.81'
L655	S0°49'45"W	22.20'
L656	S52°10'57"E	44.05'
L657	N65°50'32"E	15.25'
L658	S12°36'37"E	1.99'
L659	S59°20'04"W	22.33'
L660	S32°03'02"E	23.37'
L661	S54°07'27"E	4.62'
L662	S83°00'03"W	11.54'
L663	S85°27'08"W	16.32'
L664	N79°53'06"W	26.07'
L665	S64°44'17"W	30.88'
L666	S5°49'29"W	33.12'
L667	S9°30'15"W	60.49'
L668	S32°06'44"E	40.44'
L669	S26°00'05"E	24.65'
L670	S59°41'35"E	28.16'
L671	S75°45'33"E	21.99'
L672	S3°57'22"E	1.89'
L673	S80°09'35"W	18.40'
L674	S8°31'03"E	8.77'
L675	S81°38'31"W	2.76'
L676	N43°05'14"W	10.25'
L677	N86°58'35"W	18.63'
L678	S66°56'14"W	19.03'
L679	S7°30'16"W	26.03'
L680	N87°33'52"W	1.63'
L681	N19°34'53"W	41.23'
L682	N63°36'47"W	26.14'

LINE TABLE		
LINE	BEARING	LENGTH
L683	S72°54'12"W	22.26'
L684	S48°38'45"W	22.72'
L685	N52°53'17"W	18.09'
L686	S1°12'50"W	38.91'
L687	S24°03'13"W	17.68'
L688	S3°26'46"W	45.81'
L689	S5°09'16"E	29.83'
L690	S0°30'45"E	17.63'
L691	S79°22'22"E	23.01'
L692	S23°12'57"W	2.02'
L693	S82°23'40"W	20.57'
L694	S65°41'29"W	14.54'
L695	S70°14'57"W	26.28'
L696	S13°09'30"W	24.00'
L697	S44°05'01"W	20.60'
L698	S13°35'19"E	24.64'
L699	S26°09'27"W	22.84'
L700	S55°12'51"W	17.23'
L701	S14°19'22"W	56.46'
L702	S12°02'46"E	36.50'
L703	S9°32'58"W	24.48'
L704	S61°52'35"W	28.69'
L705	S26°34'52"W	26.13'
L706	S30°25'53"W	49.95'
L707	S63°25'19"W	28.90'
L708	S39°57'36"W	20.38'
L709	S56°40'25"W	23.84'
L710	S59°55'22"W	26.57'
L711	S23°27'36"W	37.32'
L712	S58°20'32"W	22.53'
L713	S48°19'13"W	53.12'
L714	S29°28'39"W	24.25'
L715	S62°08'58"W	32.55'
L716	N29°35'21"W	23.95'
L717	S33°15'54"W	30.40'
L718	S48°02'41"E	16.58'
L719	S21°17'06"W	15.66'
L720	S25°34'38"W	24.86'

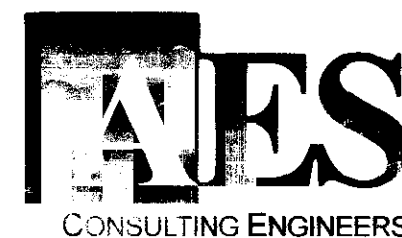
LINE TABLE		
LINE	BEARING	LENGTH
L721	S40°27'52"W	28.72'
L722	S1°59'58"W	28.06'
L723	S57°34'50"W	27.40'
L724	S3°12'35"W	26.23'
L725	N83°11'52"W	9.15'
L726	S15°28'14"W	14.95'
L727	S11°38'08"W	28.25'
L728	S7°33'30"W	30.38'
L729	S17°36'30"W	51.12'
L730	S0°57'54"W	29.00'
L731	S8°53'18"W	18.12'
L732	S14°53'59"E	11.91'
L733	S11°12'22"E	30.56'
L734	S0°50'06"W	76.47'
L735	S12°48'19"E	31.93'
L736	S12°20'21"W	20.24'
L737	S11°57'24"E	68.45'
L738	S11°49'58"E	35.68'
L739	S8°49'41"E	41.06'
L740	S15°49'00"E	17.98'
L741	S78°12'06"W	15.26'
L742	S2°39'41"E	21.69'
L743	S66°13'25"W	27.70'
L744	S2°07'47"W	29.98'
L745	S25°48'08"W	34.83'
L746	S19°15'52"W	26.89'
L747	S37°09'47"W	39.36'
L748	S37°18'40"W	36.49'
L749	S62°41'31"W	35.32'
L750	S49°01'06"W	30.28'
L751	S37°33'26"W	29.16'
L752	S14°37'02"W	21.39'
L753	S18°54'14"W	32.57'
L754	S23°07'02"W	28.07'
L755	S6°31'33"E	29.32'
L756	S19°50'01"W	12.79'
L757	S19°22'03"E	24.40'
L758	S12°40'18"W	31.76'

LINE TABLE		
LINE	BEARING	LENGTH
L759	S28°31'43"E	11.59'
L760	S14°19'12"W	23.12'
L761	S5°36'49"E	29.98'
L762	S30°34'22"E	12.90'
L763	S0°02'13"E	18.73'
L764	S0°20'02"W	20.82'
L765	S35°35'52"E	29.92'
L766	S24°24'57"E	21.39'
L767	S3°54'54"E	25.39'
L768	S2°48'10"E	22.66'
L769	S89°11'18"E	12.61'
L770	S45°29'11"E	23.48'
L771	S27°09'47"E	4.97'
L772	S68°46'03"W	2.14'
L773	N49°21'34"W	14.99'
L774	S89°59'47"W	35.95'
L775	S19°49'13"W	36.33'
L776	S1°30'08"E	57.90'
L777	S17°56'56"E	26.07'
L778	S12°21'16"E	16.36'
L779	S22°10'50"E	5.69'
L780	S79°19'31"W	2.31'

Rev	Date	Description	Revised By

City of Williamsburg & County of James City
 Circuit Court: This PLAT was recorded on
 9.12.2011
 at 2:06 PM, PB _____ PC _____
 DOCUMENT # 110019144
 BETSY B. WOOLRIDGE, CLERK
Betsy B. Woolridge Clerk

10 Large Plats Recorded
 as # 110019144



5248 Old Towne Road, Suite 1
 Williamsburg, Virginia 23188
 Phone: (757) 253-0040
 Fax: (757) 220-8994
 www.aesva.com

Hampton Roads | Central Virginia | Middle Peninsula

MAP SHOWING PRESERVATION AREAS
 PHASE V AND VI
 LOCATED ON THE PROPERTY OWNED BY
COLONIAL HERITAGE LLC

STONEHOUSE DISTRICT COUNTY OF JAMES CITY VIRGINIA

Project Contacts:	HWP/RWE
Project Number:	8881-11-L
Scale:	1"=100'
Date:	02/07/11
Sheet Number	10 of 10