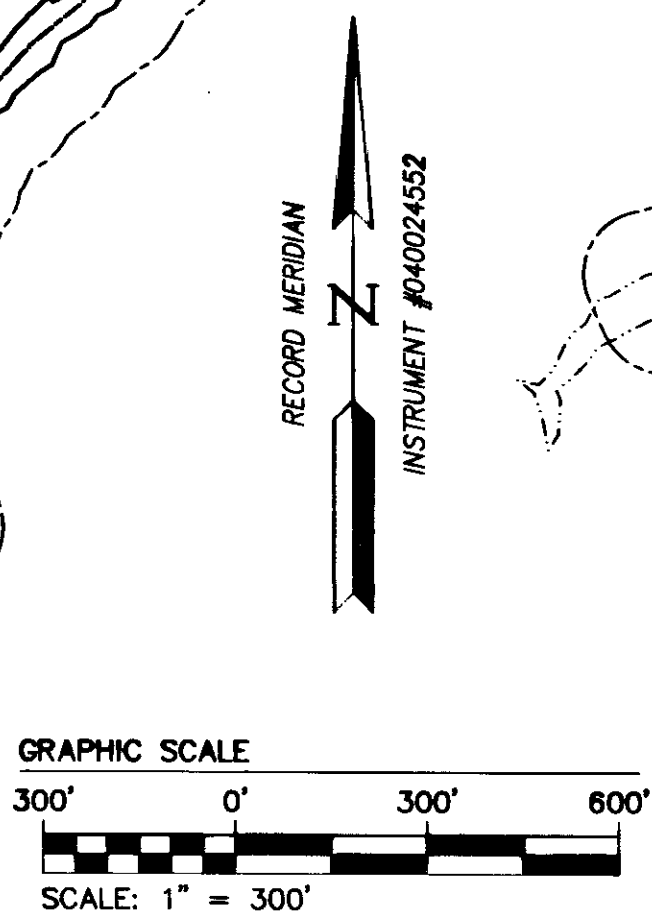
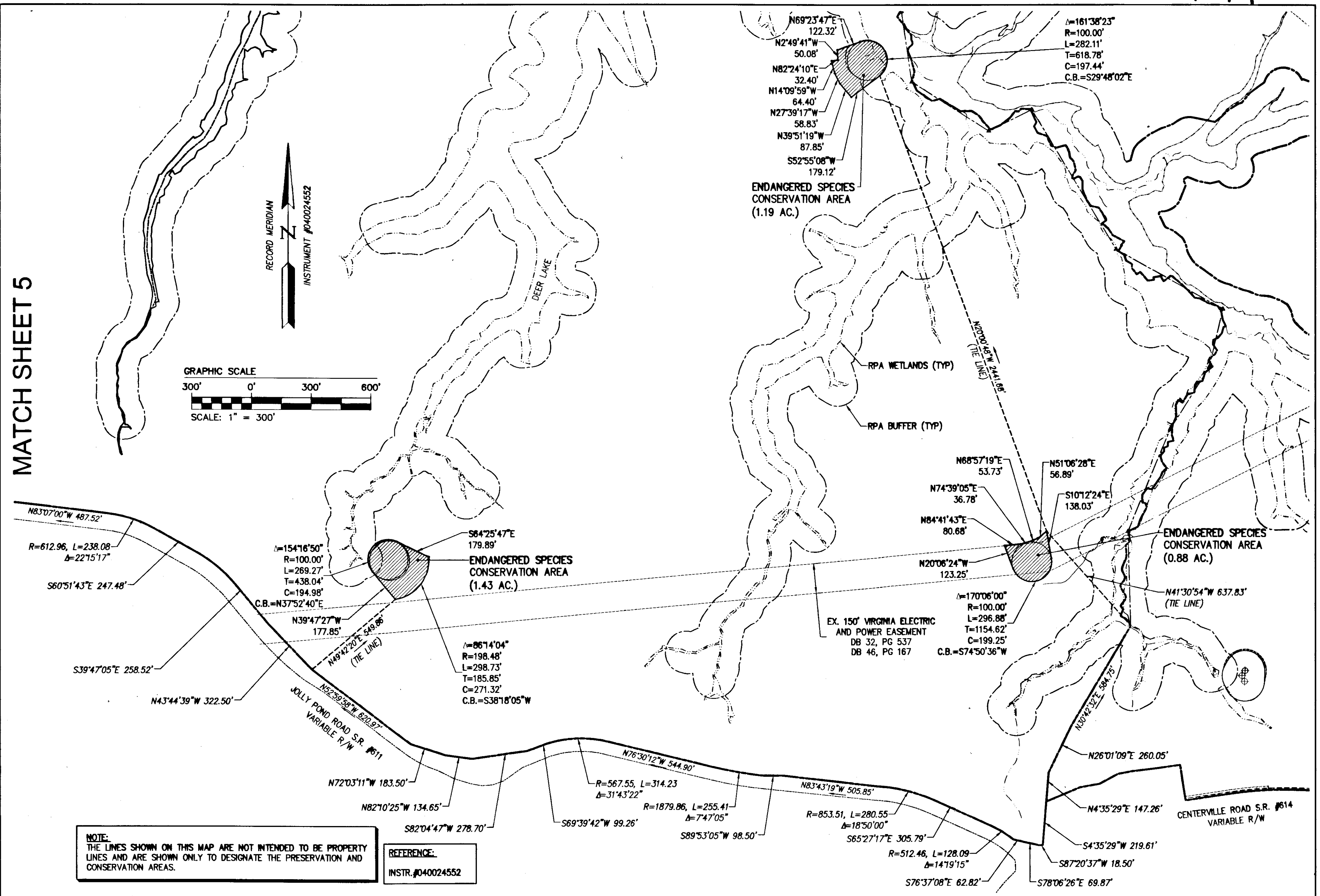


110019144

MATCH SHEET 5



**NOTE:**  
THE LINES SHOWN ON THIS MAP ARE NOT INTENDED TO BE PROPERTY LINES AND ARE SHOWN ONLY TO DESIGNATE THE PRESERVATION AND CONSERVATION AREAS.

**REFERENCE:**  
INSTR. #040024552

City of Williamsburg & County of James City Circuit Court: This PLAT was recorded on at 2:06 AM PM, PG = DOCUMENT # 110019144 BETSY B. WOOLRIDGE, CLERK Betsy B. Woolridge Clerk	10 Plat(s) Recorded 110019144		
Rev.	Date	Description	Revised By

**AES**  
CONSULTING ENGINEERS  
Hampton Roads | Central Virginia | Middle Peninsula

5248 Old Towne Road, Suite 1  
Williamsburg, Virginia 23188  
Phone: (757) 253-0040  
Fax: (757) 220-8994  
www.aesva.com

**MAP SHOWING PRESERVATION AREAS  
PHASE V AND VI  
LOCATED ON THE PROPERTY OWNED BY  
COLONIAL HERITAGE LLC**

STONEHOUSE DISTRICT      COUNTY OF JAMES CITY      VIRGINIA

Project Contacts: HWP/RWE  
Project Number: 8881-11-L  
Scale: 1"=300'      Date: 02/07/11  
Sheet Number  
**7 of 10**