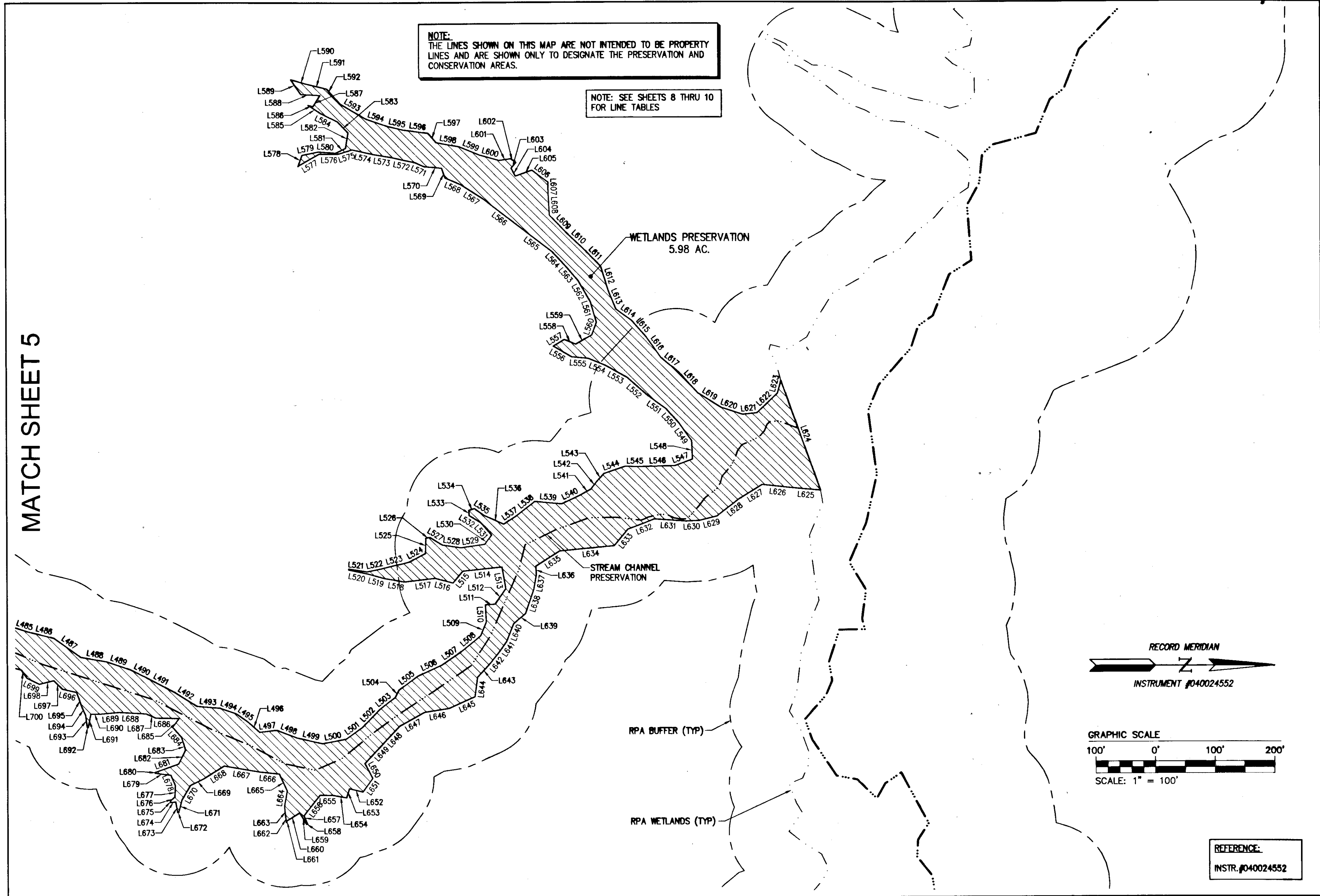


110019144

MATCH SHEET 5

NOTE:  
THE LINES SHOWN ON THIS MAP ARE NOT INTENDED TO BE PROPERTY LINES AND ARE SHOWN ONLY TO DESIGNATE THE PRESERVATION AND CONSERVATION AREAS.

NOTE: SEE SHEETS 8 THRU 10 FOR LINE TABLES



RECORD MERIDIAN  
INSTRUMENT #040024552

GRAPHIC SCALE  
100' 0' 100' 200'  
SCALE: 1" = 100'

REFERENCE:  
INSTR. #040024552

Rev.	Date	Description	Revised By

City of Williamsburg & County of James City  
Circuit Court: This PLAT was recorded on  
9-12-2011  
at 2:06 PM, PG  
DOCUMENT # 110019144  
BETSY B. WOOLRIDGE, CLERK  
Betsy B. Woolridge, Clerk

10 Large Small Plat(s) Recorded  
herewith as # 110019144

**AES**  
CONSULTING ENGINEERS  
Hampton Roads | Central Virginia | Middle Peninsula

5248 Olde Towne Road, Suite 1  
Williamsburg, Virginia 23188  
Phone: (757) 253-0040  
Fax: (757) 220-8994  
www.aesva.com

**MAP SHOWING PRESERVATION AREAS  
PHASE V AND VI  
LOCATED ON THE PROPERTY OWNED BY  
COLONIAL HERITAGE LLC**

STONEHOUSE DISTRICT      COUNTY OF JAMES CITY      VIRGINIA

Project Contacts:	HWP/RWE
Project Number:	8881-11-L
Scale:	Date:
1"=100'	02/07/11
Sheet Number	
6 of 10	