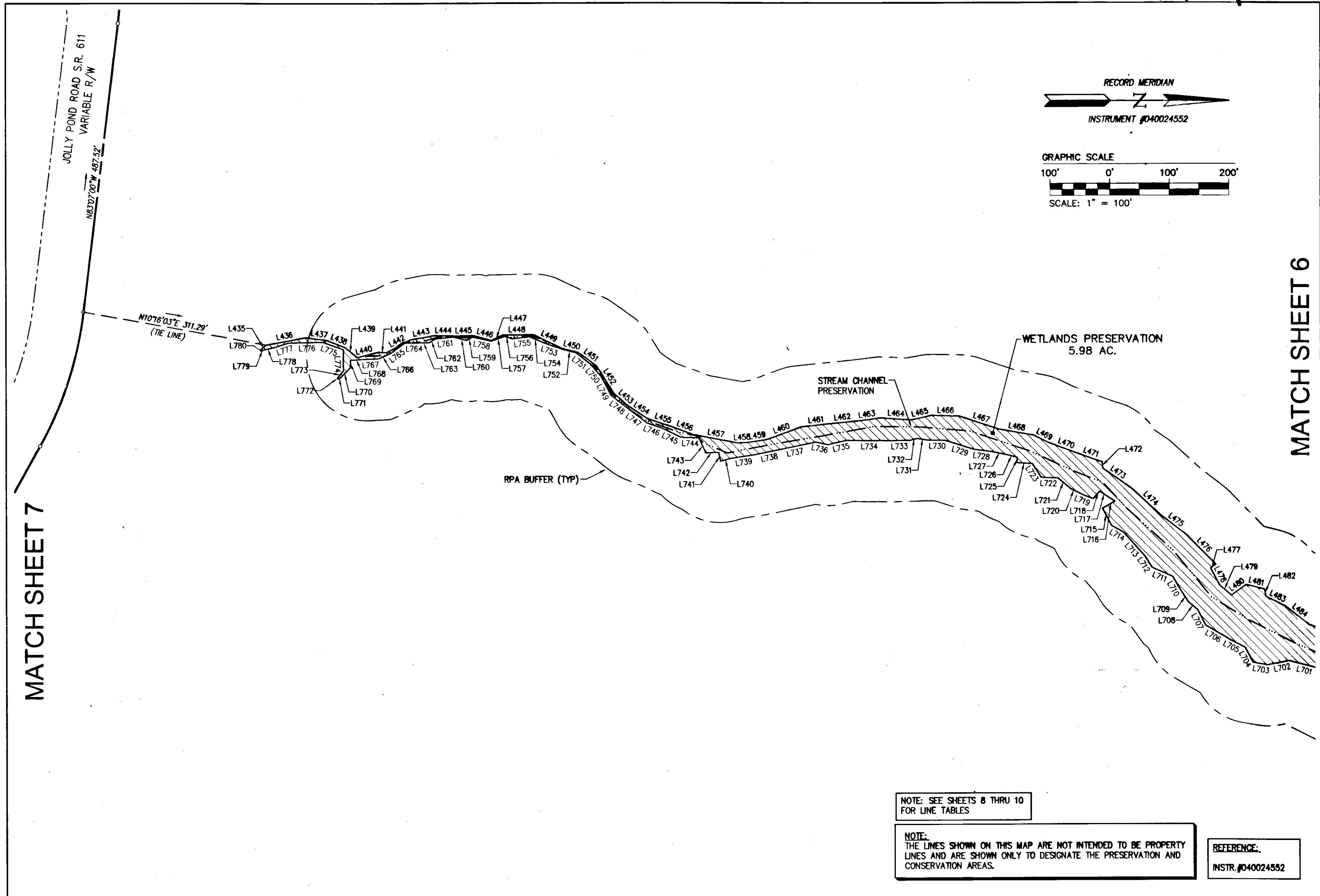


110019144



NOTE: SEE SHEETS 8 THRU 10 FOR LINE TABLES

NOTE: THE LINES SHOWN ON THIS MAP ARE NOT INTENDED TO BE PROPERTY LINES AND ARE SHOWN ONLY TO DESIGNATE THE PRESERVATION AND CONSERVATION AREAS.

REFERENCE:
INSTR. #040024552

Rev.	Date	Revised By
City of Williamsburg & County of James City Circuit Court: This PLAT was recorded on at 2:06 AM/PM, PB PG DOCUMENT # 110019144 BETSY B. WOOLRIDGE, CLERK <i>Betsy B. Woolridge</i> Clerk		

10 Large Area Plat(s) Recorded
herewith as # 110019144

AES
CONSULTING ENGINEERS

5248 Old Towne Road, Suite 1
Williamsburg, Virginia 23188
Phone: (757) 253-0040
Fax: (757) 220-8994
www.aesva.com

Hampton Roads | Central Virginia | Middle Peninsula

MAP SHOWING PRESERVATION AREAS
PHASE V AND VI
LOCATED ON THE PROPERTY OWNED BY
COLONIAL HERITAGE LLC

STONEHOUSE DISTRICT COUNTY OF JAMES CITY VIRGINIA

Project Contacts:	HWP/RWE
Project Number:	8881-11-L
Scale:	1"=100'
Date:	02/07/11
Sheet Number	5 of 10