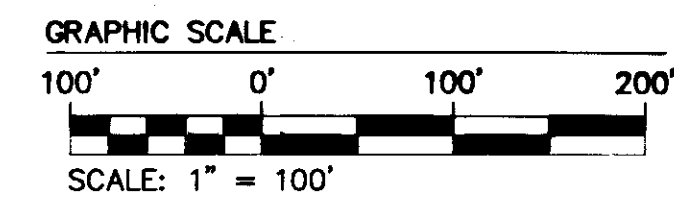
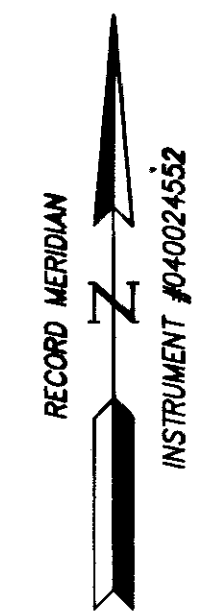
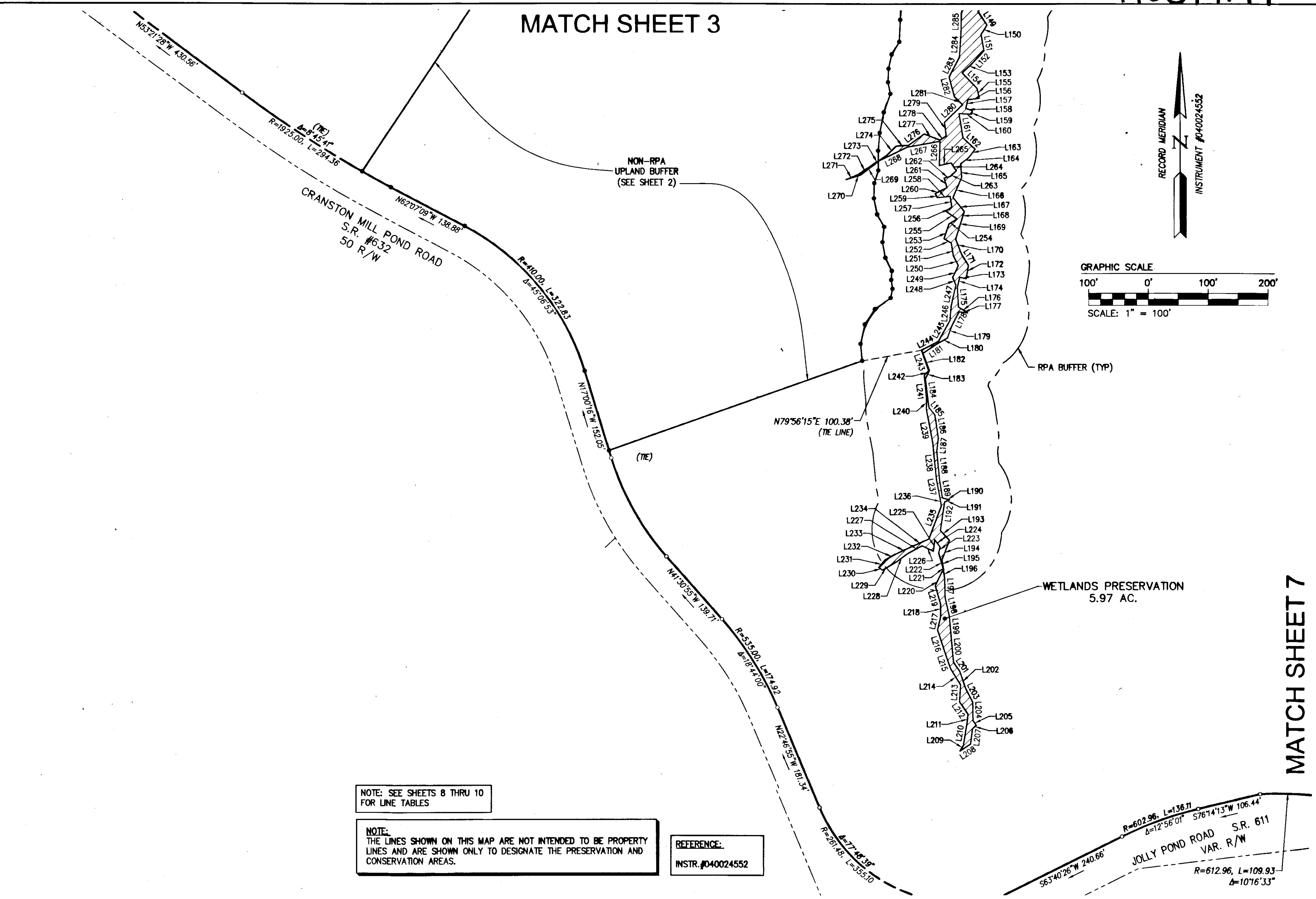


110019144

MATCH SHEET 3



MATCH SHEET 7

NOTE: SEE SHEETS 8 THRU 10 FOR LINE TABLES

NOTE: THE LINES SHOWN ON THIS MAP ARE NOT INTENDED TO BE PROPERTY LINES AND ARE SHOWN ONLY TO DESIGNATE THE PRESERVATION AND CONSERVATION AREAS.

REFERENCE:
INSTR. #040024552

Rev.	Date	City of Williamsburg & County of James City Circuit Court: This PLAT was recorded on 9/12/2011 at 2:06 AM PM. PG. DOCUMENT # 110019144 Betsy B. Woolridge, CLERK	Revised By

10 Large/Small Plat(s) Recorded herewith as # 110019144

NES
CONSULTING ENGINEERS
Hampton Roads | Central Virginia | Middle Peninsula
5248 Olde Towne Road, Suite 1
Williamsburg, Virginia 23188
Phone: (757) 253-0040
Fax: (757) 220-8994
www.aesva.com

MAP SHOWING PRESERVATION AREAS
PHASE V AND VI
LOCATED ON THE PROPERTY OWNED BY
COLONIAL HERITAGE LLC
STONEHOUSE DISTRICT COUNTY OF JAMES CITY VIRGINIA

Project Contacts: HWP/RWE
Project Number: 8881-11-L
Scale: 1"=100' Date: 02/07/11
Sheet Number
4 of 10