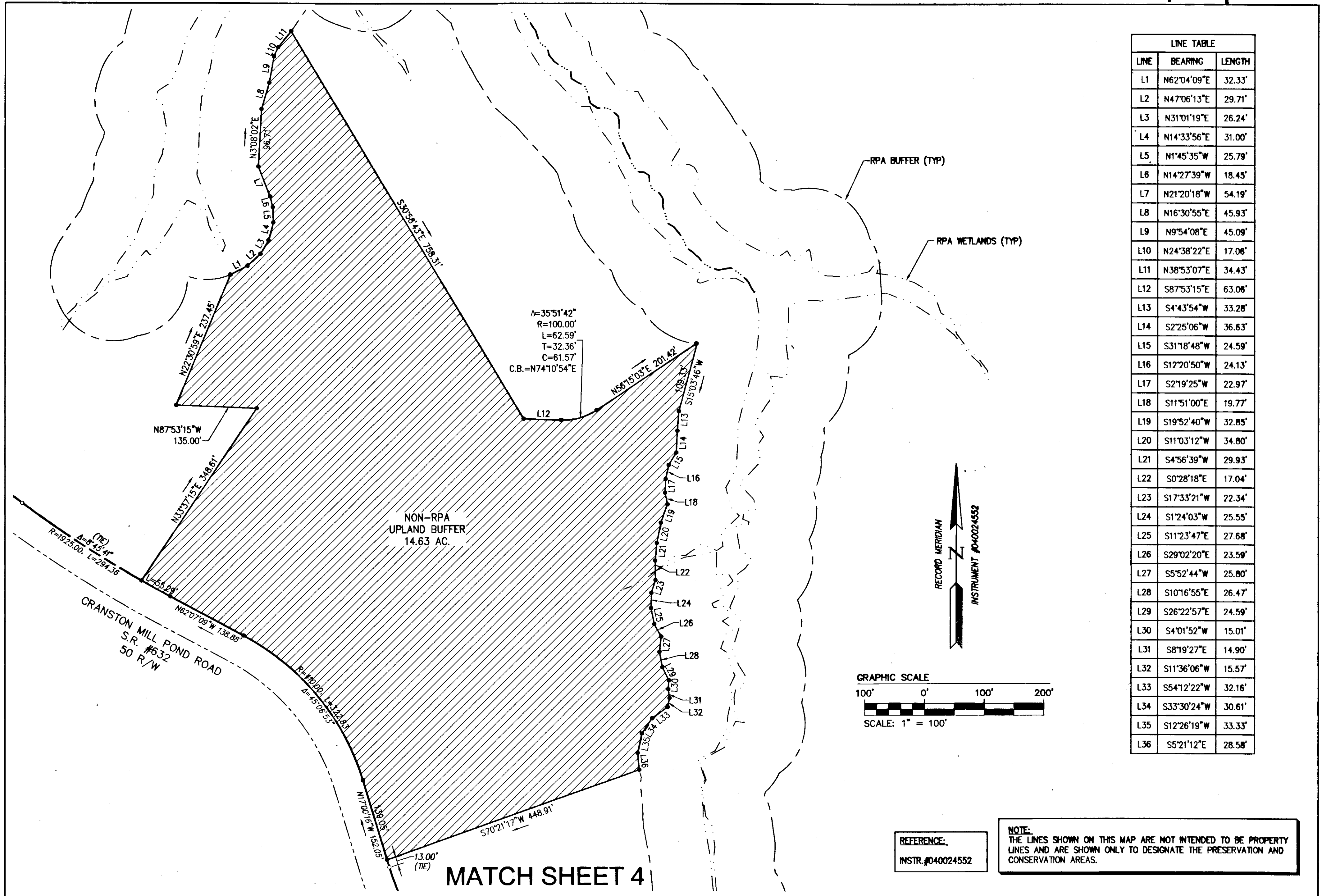


110019144



LINE TABLE		
LINE	BEARING	LENGTH
L1	N62°04'09"E	32.33'
L2	N47°06'13"E	29.71'
L3	N31°01'19"E	26.24'
L4	N14°33'56"E	31.00'
L5	N1°45'35"W	25.79'
L6	N14°27'39"W	18.45'
L7	N21°20'18"W	54.19'
L8	N16°30'55"E	45.93'
L9	N9°54'08"E	45.09'
L10	N24°38'22"E	17.06'
L11	N38°53'07"E	34.43'
L12	S87°53'15"E	63.06'
L13	S4°43'54"W	33.28'
L14	S2°25'06"W	36.63'
L15	S31°18'48"W	24.59'
L16	S12°20'50"W	24.13'
L17	S2°19'25"W	22.97'
L18	S11°51'00"E	19.77'
L19	S19°52'40"W	32.85'
L20	S11°03'12"W	34.80'
L21	S4°56'39"W	29.93'
L22	S0°28'18"E	17.04'
L23	S17°33'21"W	22.34'
L24	S1°24'03"W	25.55'
L25	S11°23'47"E	27.68'
L26	S29°02'20"E	23.59'
L27	S5°52'44"W	25.80'
L28	S10°16'55"E	26.47'
L29	S26°22'57"E	24.59'
L30	S4°01'52"W	15.01'
L31	S8°19'27"E	14.90'
L32	S11°36'06"W	15.57'
L33	S54°12'22"W	32.16'
L34	S33°30'24"W	30.61'
L35	S12°26'19"W	33.33'
L36	S5°21'12"E	28.58'

$\Delta = 35^{\circ}51'42''$
 $R = 100.00'$
 $L = 62.59'$
 $T = 32.36'$
 $C = 61.57'$
 $C.B. = N74^{\circ}10'54''E$

NON-RPA
 UPLAND BUFFER
 14.63 AC.

CRANSTON MILL POND ROAD
 S.R. #632
 50 R/W

MATCH SHEET 4

REFERENCE:
 INSTR. #040024552

NOTE:
 THE LINES SHOWN ON THIS MAP ARE NOT INTENDED TO BE PROPERTY LINES AND ARE SHOWN ONLY TO DESIGNATE THE PRESERVATION AND CONSERVATION AREAS.

Rev.	Date	Revised By

City of Williamsburg & County of James City
 Circuit Court: This PLAT was recorded on
 9/12/2011
 at 2:06 PM, PG
 DOCUMENT # 110019144
 BETSY B. WOOLRIDGE, CLERK
 Betsy B. Woolridge Clerk

10 Large/Small Plat(s) Recorded
 herewith as # 110019144

AVES
 CONSULTING ENGINEERS
 Hampton Roads | Central Virginia | Middle Peninsula
 5248 Old Towne Road, Suite 1
 Williamsburg, Virginia 23188
 Phone: (757) 253-0040
 Fax: (757) 220-8994
 www.avesva.com

MAP SHOWING PRESERVATION AREAS
 PHASE V AND VI
 LOCATED ON THE PROPERTY OWNED BY
COLONIAL HERITAGE LLC
 STONEHOUSE DISTRICT COUNTY OF JAMES CITY VIRGINIA

Project Contacts: HWP/RWE
 Project Number: 8881-11-L
 Scale: 1"=100' Date: 02/07/11
 Sheet Number
2 of 10