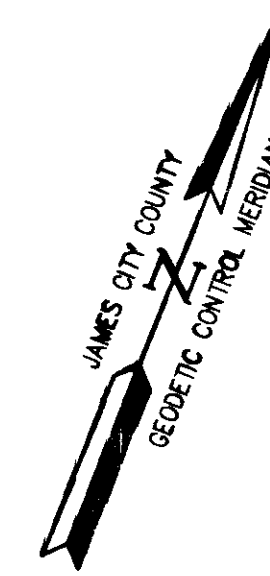
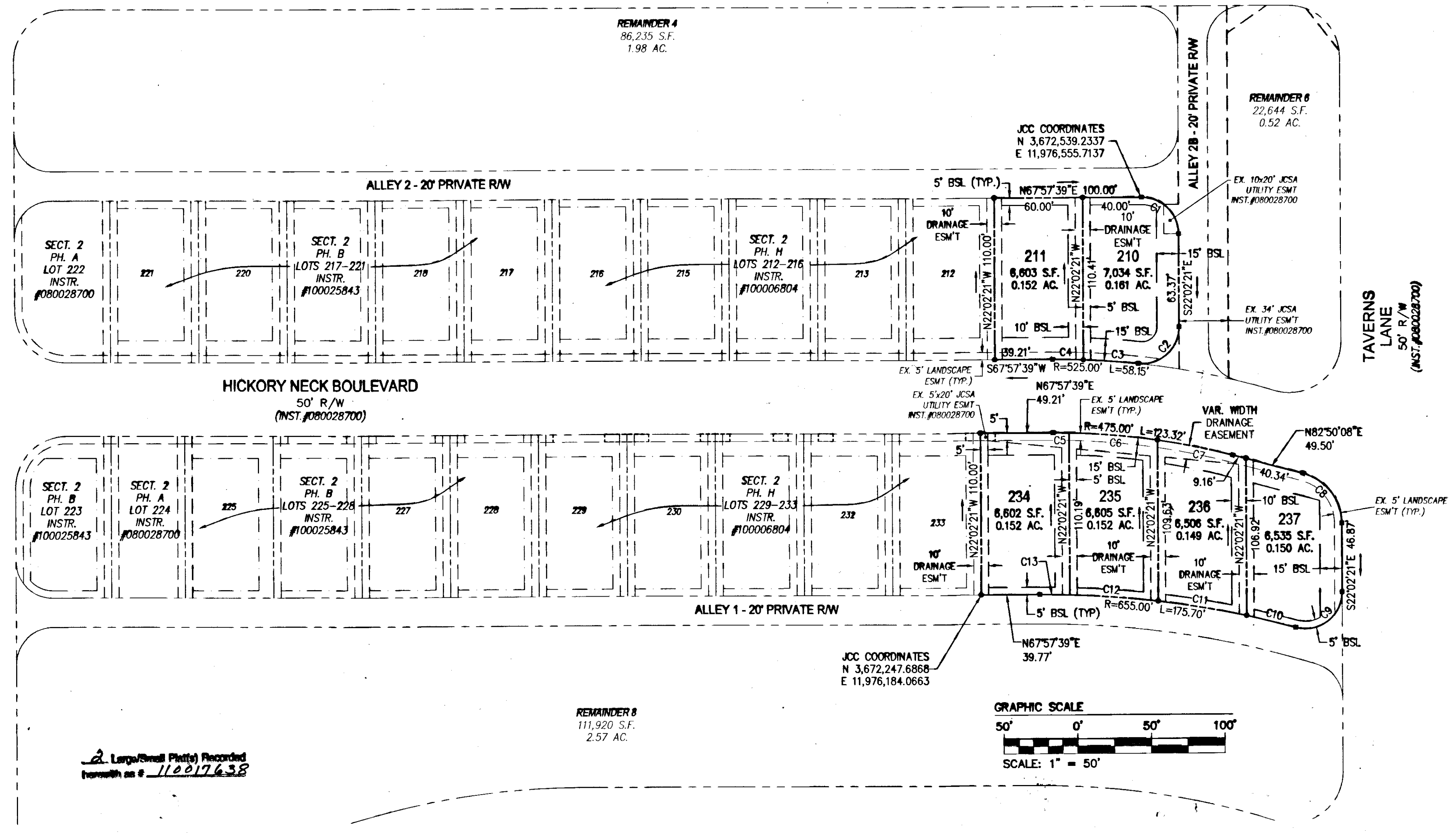


CURVE TABLE						
CURVE #	DELTA	RADIUS	LENGTH	TANGENT	CHORD	CHORD BEARING
C1	90°00'00"	25.00'	39.27'	25.00'	35.36'	S67°02'21"E
C2	96°20'45"	25.00'	42.04'	27.93'	37.26'	S26°08'02"W
C3	4°04'34"	525.00'	37.35'	18.68'	37.34'	S72°16'07"W
C4	2°16'10"	525.00'	20.80'	10.40'	20.79'	S69°05'44"W
C5	1°18'06"	475.00'	10.79'	5.40'	10.79'	N68°36'42"E
C6	7°16'09"	475.00'	60.26'	30.17'	60.22'	N72°53'50"E
C7	6°18'14"	475.00'	52.26'	26.16'	52.23'	N79°41'01"E

CURVE TABLE						
CURVE #	DELTA	RADIUS	LENGTH	TANGENT	CHORD	CHORD BEARING
C8	75°07'31"	35.00'	45.89'	26.92'	42.67'	S59°36'06"E
C9	105°22'09"	25.00'	45.98'	32.80'	39.77'	S30°38'44"W
C10	3°00'26"	655.00'	34.38'	17.19'	34.38'	S81°49'35"W
C11	5°19'35"	655.00'	60.89'	30.47'	60.87'	S77°39'34"W
C12	5°15'57"	655.00'	60.20'	30.12'	60.18'	S72°21'48"W
C13	1°46'10"	655.00'	20.23'	10.11'	20.23'	S68°50'44"W

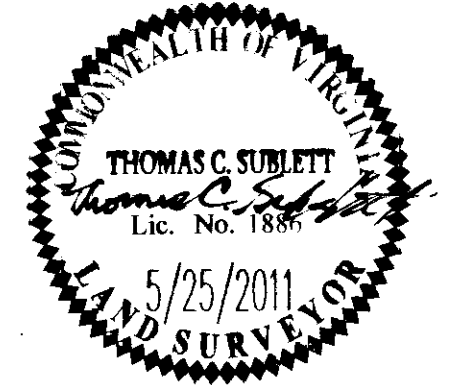


WESCOTT DRIVE  
50' R/W  
(INST. #080028700)



1	7/7/11	Revised per JCC comments dated June 17, 2011	ABS
Rev.	Date	Description	Revised By

City of Williamsburg & County of James City  
Circuit Court: This PLAT was recorded on  
15 August 2011  
at 3:03 AM/PM, PB - PG -  
DOCUMENT # 110017638  
BETSY B. WOOLRIDGE, CLERK  
*Betsy B. Woolridge* Clerk



**AES**  
CONSULTING ENGINEERS  
2248 Old Towne Road, Suite 1  
Williamsburg, Virginia 23188  
Phone: (757) 253-0040  
Fax: (757) 220-8994  
www.aesva.com

**PLAT OF SUBDIVISION OF**  
**REMAINDERS 5 & 7**  
**WHITE HALL**  
SECTION 2, PHASE I  
OWNER: RAUCH DEVELOPMENT CO., L.L.C.  
JCC CASE NO. S-0031-2011  
STONEHOUSE DISTRICT | JAMES CITY COUNTY | VIRGINIA

Project Contacts:	TCS/JFS
Project Number:	9048-11
Scale:	1"=50'
Date:	5/25/11
Sheet Number	<b>2 OF 2</b>