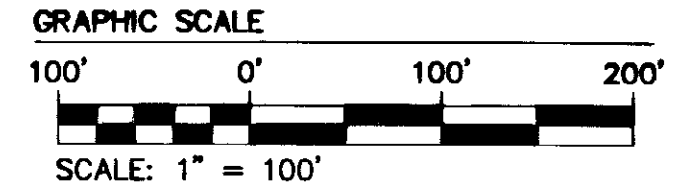
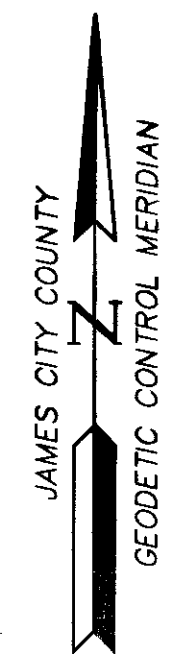
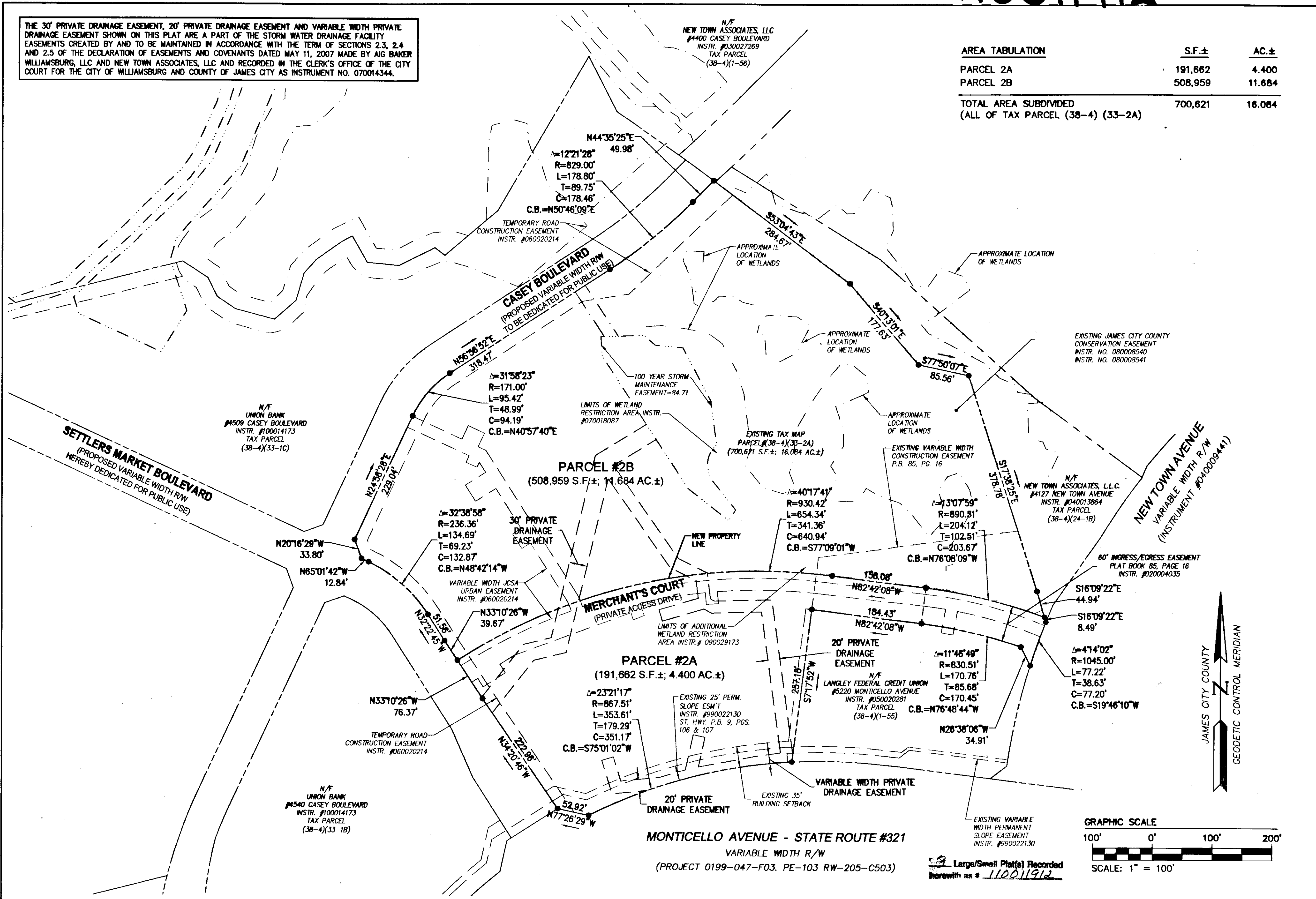


110011912

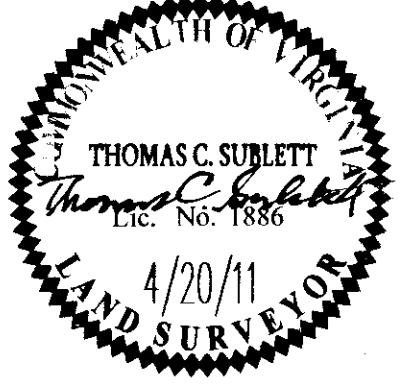
THE 30' PRIVATE DRAINAGE EASEMENT, 20' PRIVATE DRAINAGE EASEMENT AND VARIABLE WIDTH PRIVATE DRAINAGE EASEMENT SHOWN ON THIS PLAT ARE A PART OF THE STORM WATER DRAINAGE FACILITY EASEMENTS CREATED BY AND TO BE MAINTAINED IN ACCORDANCE WITH THE TERM OF SECTIONS 2.3, 2.4 AND 2.5 OF THE DECLARATION OF EASEMENTS AND COVENANTS DATED MAY 11, 2007 MADE BY AIG BAKER WILLIAMSURG, LLC AND NEW TOWN ASSOCIATES, LLC AND RECORDED IN THE CLERK'S OFFICE OF THE CITY COURT FOR THE CITY OF WILLIAMSURG AND COUNTY OF JAMES CITY AS INSTRUMENT NO. 070014344.

AREA TABULATION	S.F.±	AC.±
PARCEL 2A	191,662	4.400
PARCEL 2B	508,959	11.684
TOTAL AREA SUBDIVDED (ALL OF TAX PARCEL (38-4) (33-2A))	700,621	16.084



Large/Small Plat(s) Recorded herewith as # 110011912

City of Williamsburg & County of James City		Circuit Court: This PLAT was recorded on	
		at 3:28 AM/PM, PG. 10 June 2011	
		DOCUMENT # 110011912	
		BETSY B. WOOLRIDGE, CLERK	
		<i>Betsy B. Woolridge</i> Clerk	
1	4/20/11		JAG
Rev.	Date	Description	Revised By



AES
CONSULTING ENGINEERS
Hampton Roads | Central Virginia | Middle Peninsula

5248 Old Towne Road, Suite 1
Williamsburg, Virginia 23188
Phone: (757) 253-0040
Fax: (757) 220-8994
www.aesva.com

PLAT OF SUBDIVISION
PARCEL 2A
NEW TOWN, SECTION 9
"SETTLER'S MARKET AT NEW TOWN"
PROPERTY OF FCP SETTLER'S MARKET, L.L.C. (FCP I)

COUNTY OF JAMES CITY BERKELEY DISTRICT VIRGINIA

Project Contacts: JAG, GAM
Project Number: 6532-59-015
Scale: 1"=100' Date: 4/20/11
Sheet Number
2 OF 3