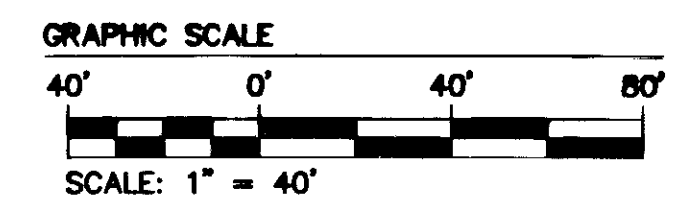
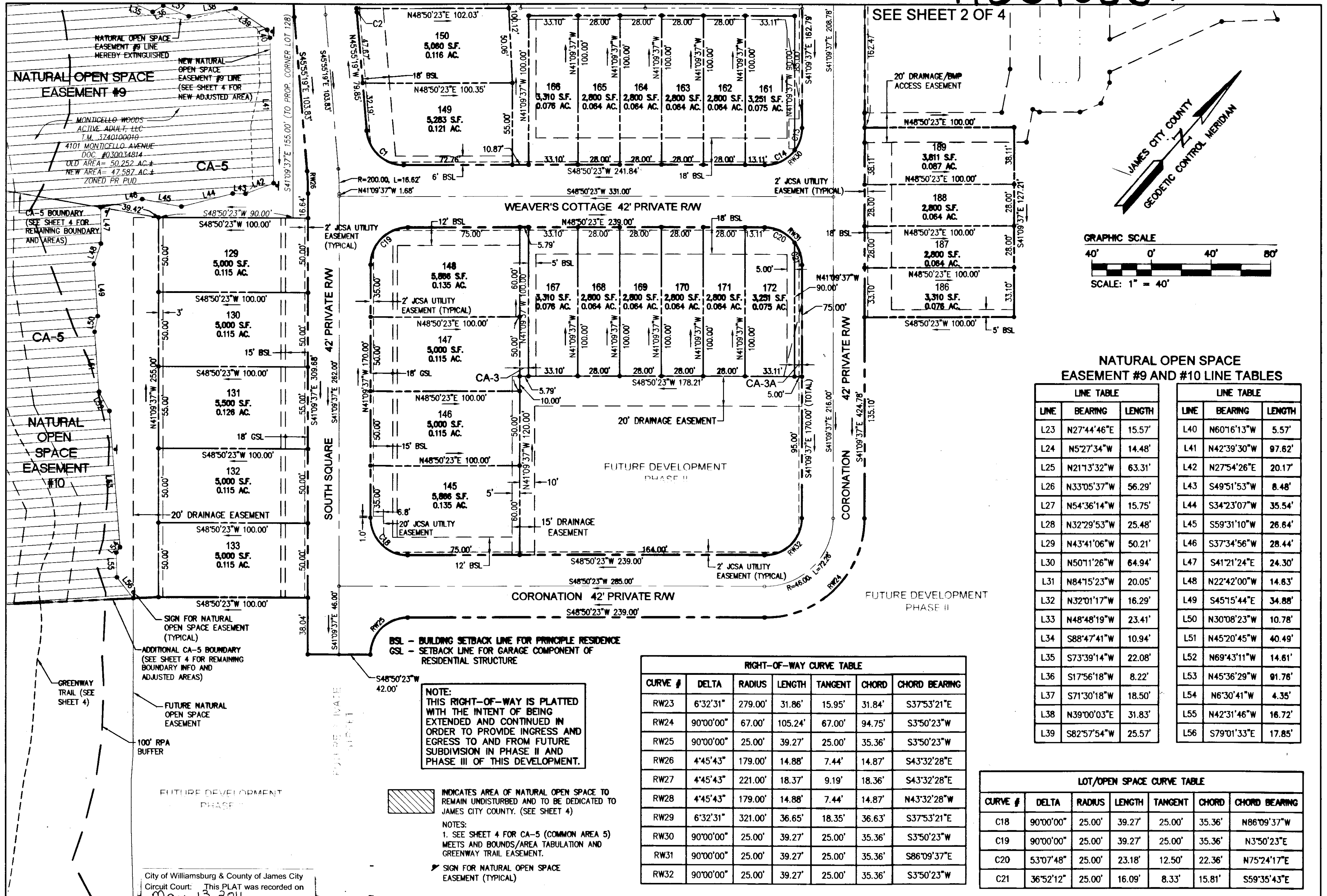


110010664



NATURAL OPEN SPACE EASEMENT #9 AND #10 LINE TABLES

LINE TABLE			LINE TABLE		
LINE	BEARING	LENGTH	LINE	BEARING	LENGTH
L23	N27°44'46"E	15.57'	L40	N60°16'13"W	5.57'
L24	N5°27'34"W	14.48'	L41	N42°39'30"W	97.62'
L25	N21°13'32"W	63.31'	L42	N27°54'26"E	20.17'
L26	N33°05'37"W	56.29'	L43	S49°51'53"W	8.48'
L27	N54°36'14"W	15.75'	L44	S34°23'07"W	35.54'
L28	N32°29'53"W	25.48'	L45	S59°31'10"W	26.84'
L29	N43°41'06"W	50.21'	L46	S37°34'56"W	28.44'
L30	N50°11'26"W	64.94'	L47	S41°21'24"E	24.30'
L31	N84°15'23"W	20.05'	L48	N22°42'00"W	14.63'
L32	N32°01'17"W	16.29'	L49	S45°15'44"E	34.88'
L33	N48°48'19"W	23.41'	L50	N30°08'23"W	10.78'
L34	S88°47'41"W	10.94'	L51	N45°20'45"W	40.49'
L35	S73°39'14"W	22.08'	L52	N69°43'11"W	14.61'
L36	S17°56'18"W	8.22'	L53	N45°36'29"W	91.76'
L37	S71°30'18"W	18.50'	L54	N6°30'41"W	4.35'
L38	N39°00'03"E	31.83'	L55	N42°31'46"W	16.72'
L39	S82°57'54"W	25.57'	L56	S79°01'33"E	17.85'

RIGHT-OF-WAY CURVE TABLE

CURVE #	DELTA	RADIUS	LENGTH	TANGENT	CHORD	CHORD BEARING
RW23	6°32'31"	279.00'	31.86'	15.95'	31.84'	S37°53'21"E
RW24	90°00'00"	67.00'	105.24'	67.00'	94.75'	S3°50'23"W
RW25	90°00'00"	25.00'	39.27'	25.00'	35.36'	S3°50'23"W
RW26	4°45'43"	179.00'	14.88'	7.44'	14.87'	S43°32'28"E
RW27	4°45'43"	221.00'	18.37'	9.19'	18.36'	S43°32'28"E
RW28	4°45'43"	179.00'	14.88'	7.44'	14.87'	N43°32'28"W
RW29	6°32'31"	321.00'	36.65'	18.35'	36.63'	S37°53'21"E
RW30	90°00'00"	25.00'	39.27'	25.00'	35.36'	S3°50'23"W
RW31	90°00'00"	25.00'	39.27'	25.00'	35.36'	S86°09'37"E
RW32	90°00'00"	25.00'	39.27'	25.00'	35.36'	S3°50'23"W

LOT/OPEN SPACE CURVE TABLE

CURVE #	DELTA	RADIUS	LENGTH	TANGENT	CHORD	CHORD BEARING
C18	90°00'00"	25.00'	39.27'	25.00'	35.36'	N86°09'37"W
C19	90°00'00"	25.00'	39.27'	25.00'	35.36'	N3°50'23"E
C20	53°07'48"	25.00'	23.18'	12.50'	22.36'	N75°24'17"E
C21	36°52'12"	25.00'	16.09'	8.33'	15.81'	S59°35'43"E

NOTE: THIS RIGHT-OF-WAY IS PLATTED WITH THE INTENT OF BEING EXTENDED AND CONTINUED IN ORDER TO PROVIDE INGRESS AND EGRESS TO AND FROM FUTURE SUBDIVISION IN PHASE II AND PHASE III OF THIS DEVELOPMENT.

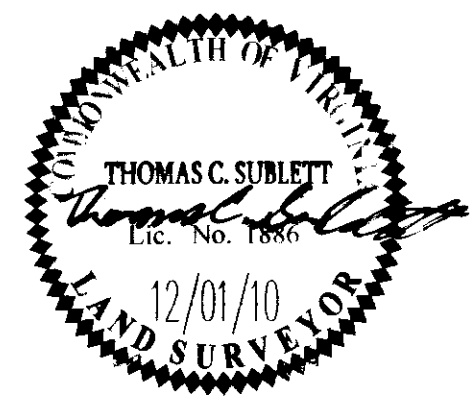
INDICATES AREA OF NATURAL OPEN SPACE TO REMAIN UNDISTURBED AND TO BE DEDICATED TO JAMES CITY COUNTY. (SEE SHEET 4)

NOTES:
1. SEE SHEET 4 FOR CA-5 (COMMON AREA 5) MEETS AND BOUNDS/AREA TABULATION AND GREENWAY TRAIL EASEMENT.

➤ SIGN FOR NATURAL OPEN SPACE EASEMENT (TYPICAL)

City of Williamsburg & County of James City
Circuit Court: This PLAT was recorded on
May 13, 2011
at 10:00 AM/PM, PB PG
DOCUMENT # 110010664
BETSY B. WOOLRIDGE, CLERK
Betsy B. Woolridge Clerk

Rev.	Date	Description	Revised By
3	3/18/11	REVISED SETBACK LINES	JFS
2	3/15/11	REMOVED LOT 123 PER OWNER	JFS
1	3/4/11	REVISED PER COUNTY COMMENTS	JFS



Large/Small Plat(s) Recorded herewith as # 110010664

5248 Old Towne Road, Suite 1
Williamsburg, Virginia 23188
Phone: (757) 253-0040
Fax: (757) 220-8994
www.aesva.com

Hampton Roads | Central Virginia | Middle Peninsula

PLAT OF SUBDIVISION AND BOUNDARY LINE ADJUSTMENT
THE SETTLEMENT AT POWHATAN CREEK
PHASE II
LOTS 124-133, 145-172, AND 186-189

BERKELEY DISTRICT JAMES CITY COUNTY VIRGINIA

Project Contacts: TRS/RDM
Project Number: 9254-08
Scale: 1"=40' Date: 12/01/10
Sheet Number: 3 of 4