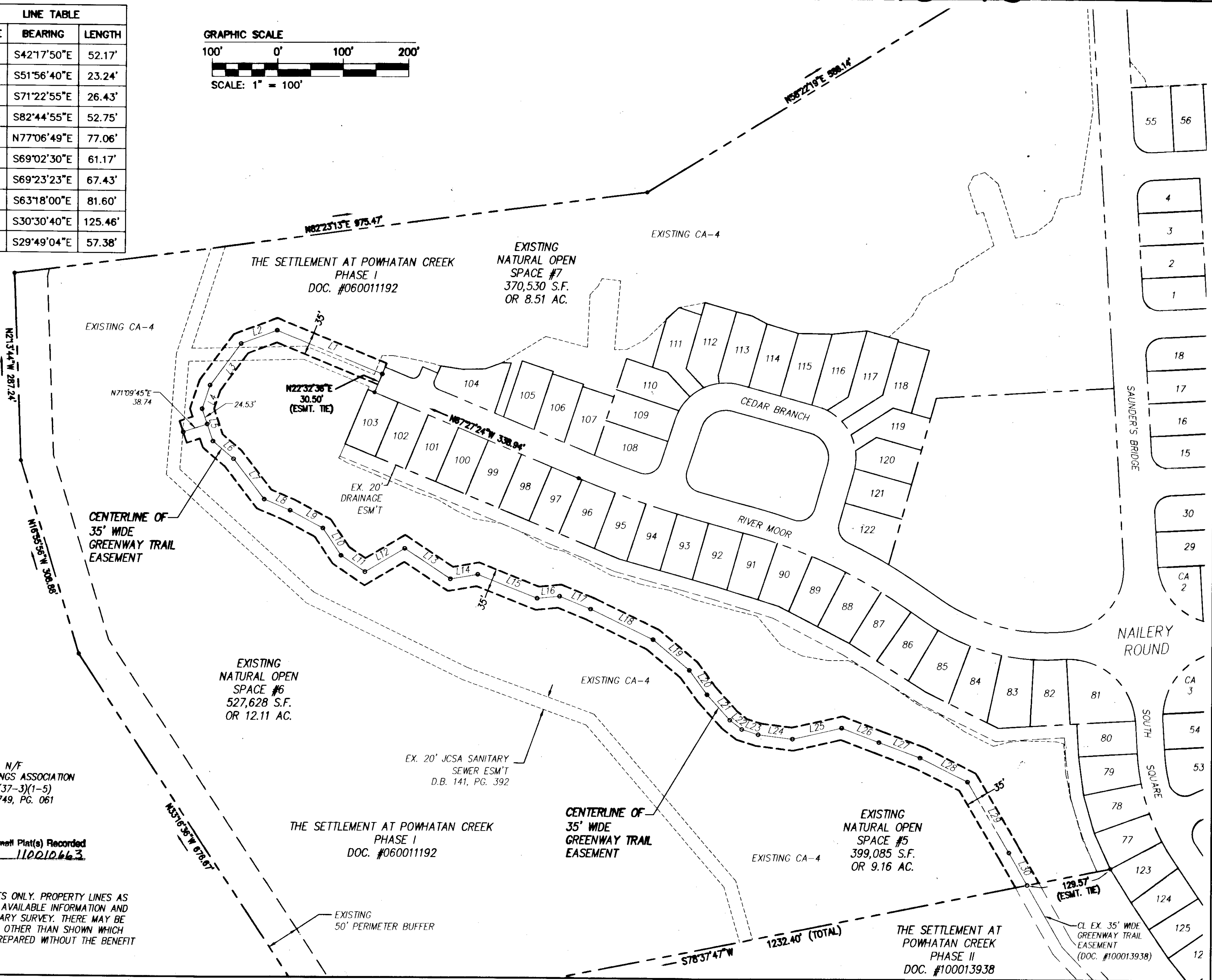
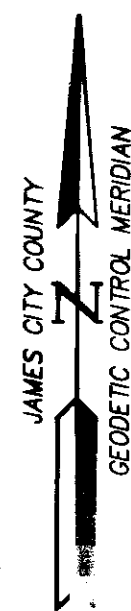
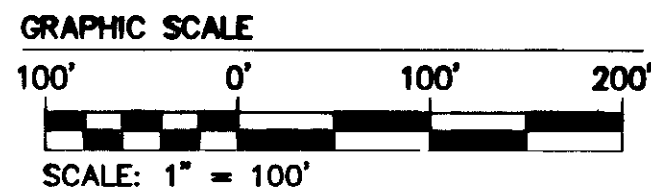


110010663

LINE TABLE		
LINE	BEARING	LENGTH
L1	N67°27'24"W	174.24'
L2	S69°30'32"W	58.73'
L3	S36°28'37"W	79.22'
L4	S18°19'58"W	38.32'
L5	S18°50'15"E	52.02'
L6	S49°27'23"E	41.54'
L7	S37°20'43"E	77.97'
L8	S66°52'09"E	43.17'
L9	S61°33'58"E	57.16'
L10	S33°46'30"E	50.27'
L11	S55°52'46"E	44.23'
L12	N59°26'10"E	70.45'
L13	S56°27'38"E	83.98'
L14	N80°24'22"E	42.78'
L15	S68°20'23"E	97.77'
L16	N84°28'14"E	34.41'
L17	S67°46'58"E	51.27'
L18	S64°19'58"E	106.27'
L19	S50°11'58"E	72.54'
L20	S36°10'04"E	46.15'

LINE TABLE		
LINE	BEARING	LENGTH
L21	S42°17'50"E	52.17'
L22	S51°56'40"E	23.24'
L23	S71°22'55"E	26.43'
L24	S82°44'55"E	52.75'
L25	N77°06'49"E	77.06'
L26	S69°02'30"E	61.17'
L27	S69°23'23"E	67.43'
L28	S63°18'00"E	81.60'
L29	S30°30'40"E	125.46'
L30	S29°49'04"E	57.38'

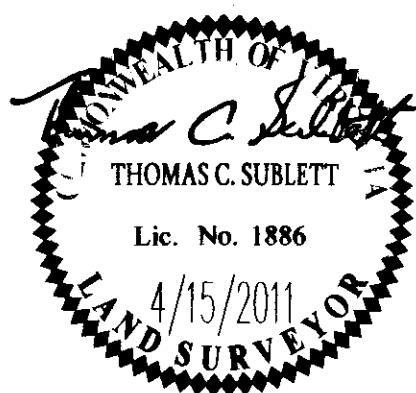


N/F
GREENSPRINGS ASSOCIATION
T.M. (37-3)(1-5)
D.B. 749, PG. 061

Large/Small Plat(s) Recorded
herewith as # 110010663.

NOTE:
THIS PLAT IS INTENDED FOR EASEMENT PURPOSES ONLY. PROPERTY LINES AS SHOWN WERE TAKEN FROM RECORD AND OTHER AVAILABLE INFORMATION AND DOES NOT REPRESENT AN ACTUAL FIELD BOUNDARY SURVEY. THERE MAY BE EASEMENTS AND OTHER COVENANTS OF RECORD OTHER THAN SHOWN WHICH MAY AFFECT THIS PROPERTY. THIS PLAT WAS PREPARED WITHOUT THE BENEFIT OF A CURRENT TITLE REPORT.

City of Williamsburg & County of James City	
Circuit Court	This PLAT was recorded on
	13 May 2011
at 9:37 AM/PM	PB PG
	DOCUMENT # 110010663
BETSY B. WOOLRIDGE, CLERK	
<i>Betsy B. Woolridge</i>	Clerk
Rev.	Date
Revised By	



AES
CONSULTING ENGINEERS
5248 Old Towne Road, Suite 1
Williamsburg, Virginia 23188
Phone: (757) 253-0040
Fax: (757) 220-8994
www.aesva.com

**PLAT OF GREENWAY TRAIL EASEMENT
THE SETTLEMENT AT POWHATAN CREEK
PHASE I**
BERKELEY DISTRICT JAMES CITY COUNTY VIRGINIA

Project Contacts: TCS/JFS
Project Number: 9254-02
Scale: 1"=100' Date: 4/15/11
Sheet Number
1 OF 1