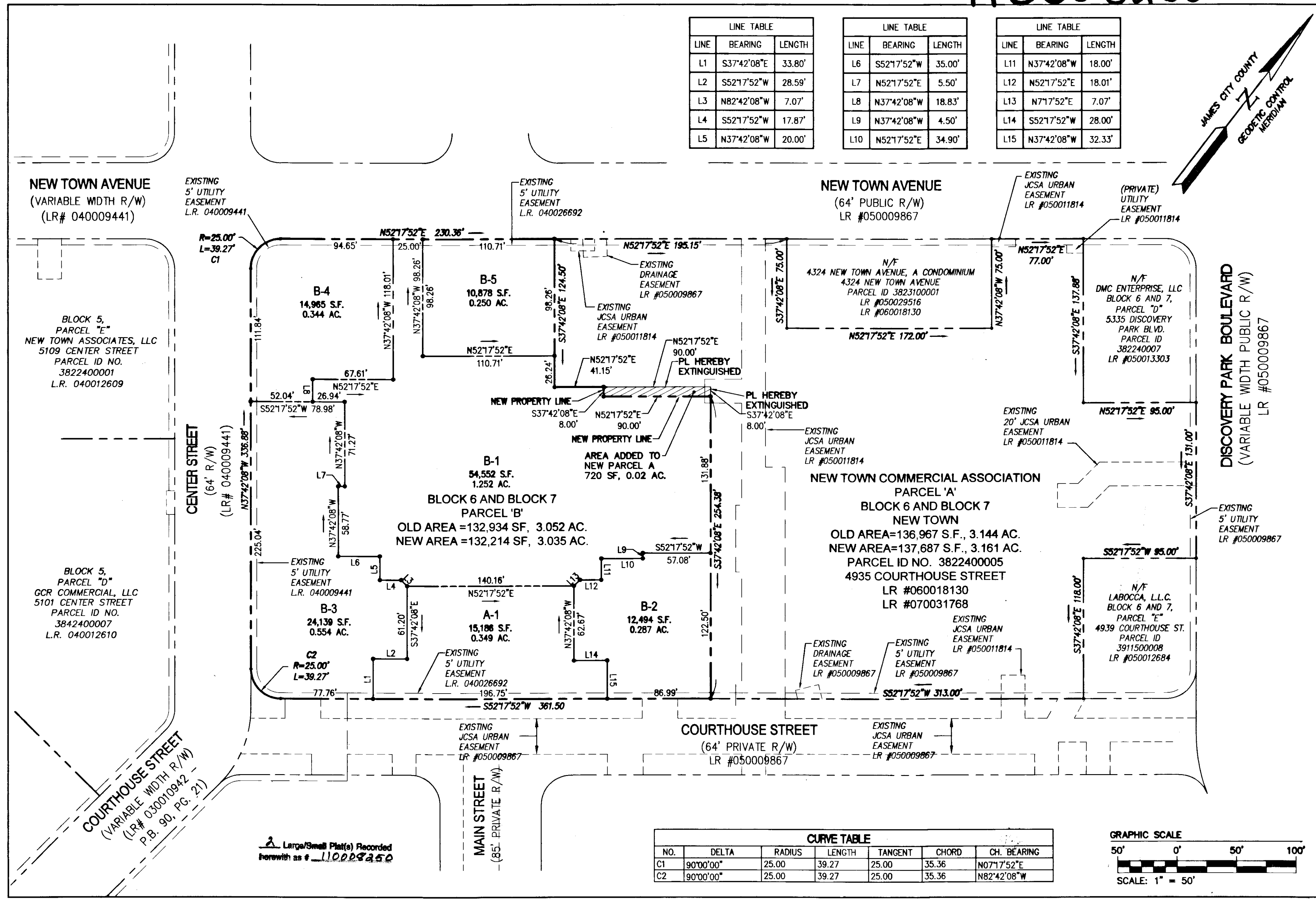
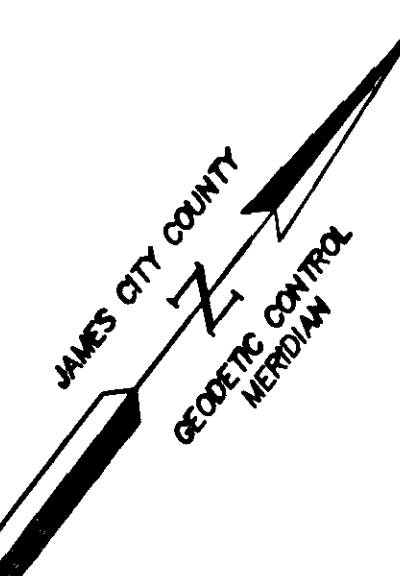


110008250

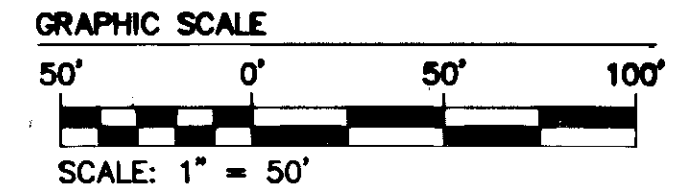
LINE	BEARING	LENGTH
L1	S37°42'08"E	33.80'
L2	S52°17'52"W	28.59'
L3	N82°42'08"W	7.07'
L4	S52°17'52"W	17.87'
L5	N37°42'08"W	20.00'

LINE	BEARING	LENGTH
L6	S52°17'52"W	35.00'
L7	N52°17'52"E	5.50'
L8	N37°42'08"W	18.83'
L9	N37°42'08"W	4.50'
L10	N52°17'52"E	34.90'

LINE	BEARING	LENGTH
L11	N37°42'08"W	18.00'
L12	N52°17'52"E	18.01'
L13	N7°17'52"E	7.07'
L14	S52°17'52"W	28.00'
L15	N37°42'08"W	32.33'



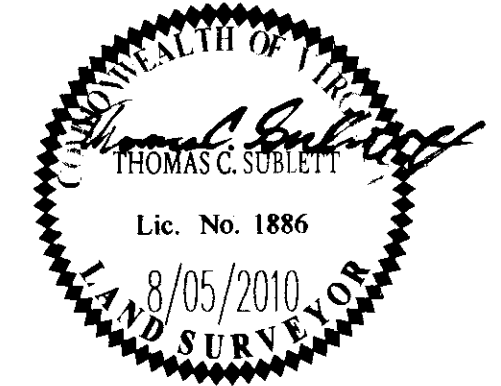
NO.	DELTA	RADIUS	LENGTH	TANGENT	CHORD	CH. BEARING
C1	90°00'00"	25.00	39.27	25.00	35.36	N07°17'52"E
C2	90°00'00"	25.00	39.27	25.00	35.36	N82°42'08"W



Large/Small Plat(s) Recorded herewith as # 110008250

1	9/2/10		JFS
Rev.	Date	Description	Revised By

City of Williamsburg & County of James City  
 Circuit Court: This PLAT was recorded on 14 April 2011  
 at 12:43 AM/PM, PB \_\_\_\_\_ PG \_\_\_\_\_  
 DOCUMENT # 110008250  
 BETSY B. WOOLRIDGE, CLERK  
*Betsy B. Woolridge* Clerk



**NEES**  
 CONSULTING ENGINEERS  
 Hampton Roads | Central Virginia | Middle Peninsula  
 5248 Old Towne Road, Suite 1  
 Williamsburg, Virginia 23188  
 Phone: (757) 253-0040  
 Fax: (757) 220-8994  
 www.aesva.com

PLAT OF SUBDIVISION AND BOUNDARY LINE ADJUSTMENT  
 BEING PARCELS 'A' AND 'B'  
 OF BLOCK 6 AND BLOCK 7  
 NEW TOWN  
 OWNED BY NEW TOWN COMMERCIAL ASSOCIATION  
 AND WILLIAMSBURG DEVELOPERS, LLC  
 BERKELEY DISTRICT COUNTY OF JAMES CITY VIRGINIA

Project Contacts:	REC/TCS
Project Number:	6632-21-11
Scale:	1"=50'
Date:	8/5/2010
Sheet Number	2 OF 2