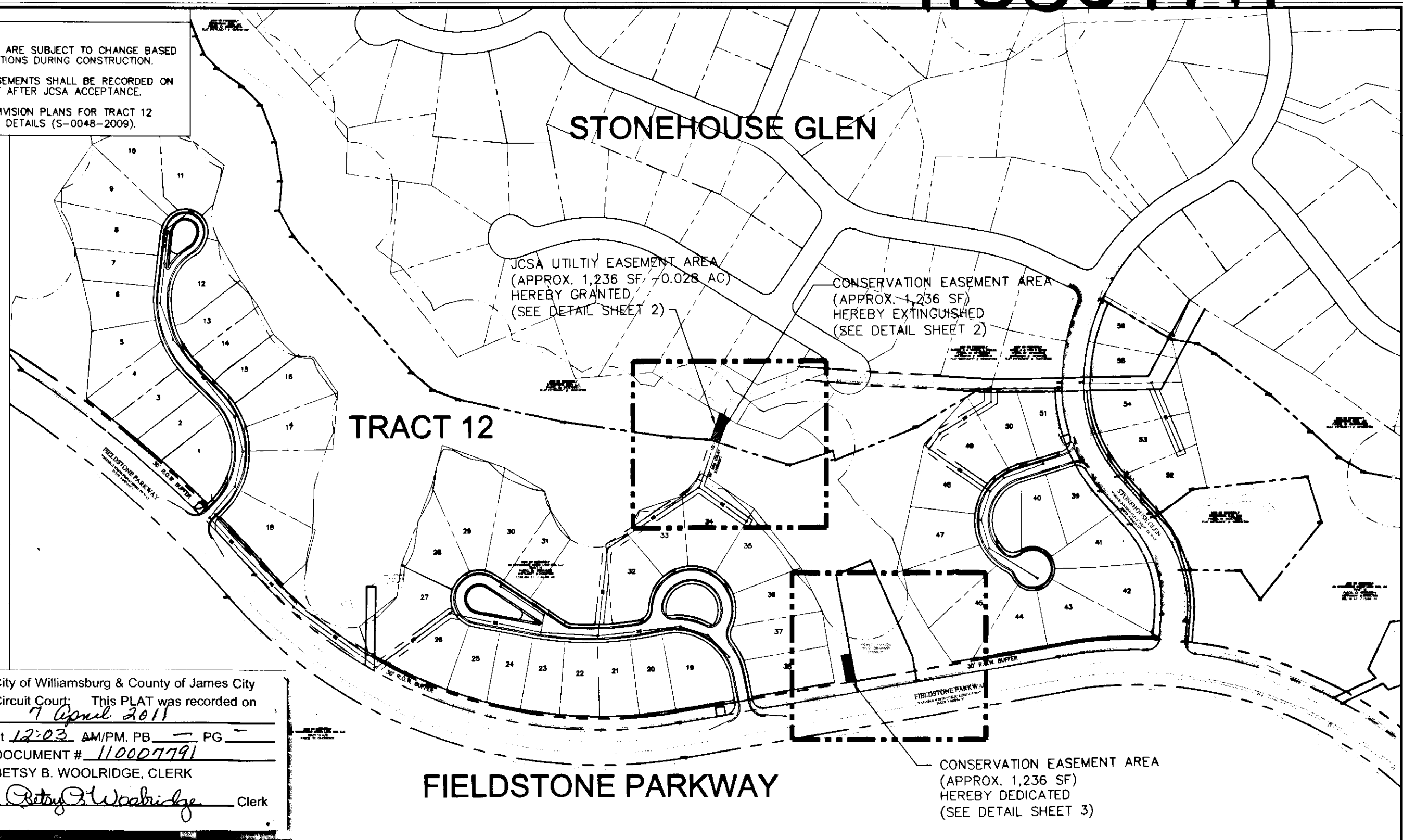
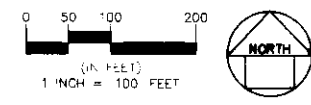


110007791

- NOTES:
1. ALL EASEMENTS ARE SUBJECT TO CHANGE BASED ON FIELD CONDITIONS DURING CONSTRUCTION.
  2. ALL UTILITY EASEMENTS SHALL BE RECORDED ON THE FINAL PLAT AFTER JCSA ACCEPTANCE.
  3. REFER TO SUBDIVISION PLANS FOR TRACT 12 FOR ADDITIONAL DETAILS (S-0048-2009).



City of Williamsburg & County of James City  
 Circuit Court: This PLAT was recorded on  
7 April 2011  
 at 12:03 AM/PM. PB — PG —  
 DOCUMENT # 110007791  
 BETSY B. WOOLRIDGE, CLERK  
*Betsy B. Woolridge* Clerk



3 Large/Small Plat(s) Recorded  
 herewith as # 110007791

STONEHOUSE - TRACT 12  
 GS STONEHOUSE GREEN LAND SUB, LLC  
 SEWER / CONSERVATION EASEMENT EXHIBIT-STONEHOUSE GLEN  
 SHEET 1  
 JAMES CITY COUNTY, VA

**WSP • SELLS**  
 Transportation & Infrastructure  
 15401 Weston Parkway Suite 100 • Cary, NC 27513 • 919.678.0055  
 www.wspells.com

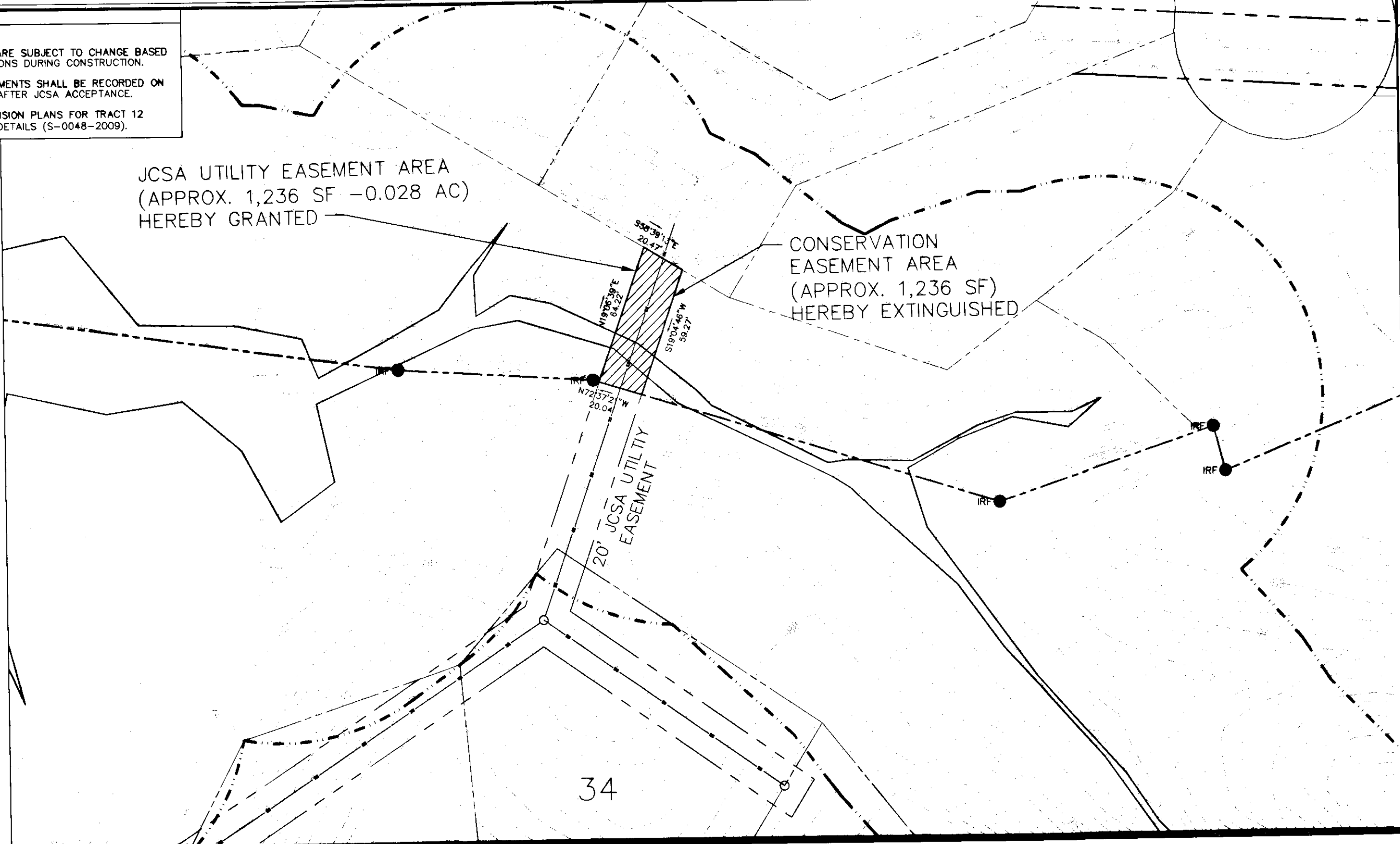
DATE: 09/29/10  
 PROJECT: 08-4050

110007791

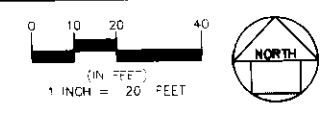
- NOTES:
1. ALL EASEMENTS ARE SUBJECT TO CHANGE BASED ON FIELD CONDITIONS DURING CONSTRUCTION.
  2. ALL UTILITY EASEMENTS SHALL BE RECORDED ON THE FINAL PLAT AFTER JCSA ACCEPTANCE.
  3. REFER TO SUBDIVISION PLANS FOR TRACT 12 FOR ADDITIONAL DETAILS (S-0048-2009).

JCSA UTILITY EASEMENT AREA  
(APPROX. 1,236 SF - 0.028 AC)  
HEREBY GRANTED

CONSERVATION  
EASEMENT AREA  
(APPROX. 1,236 SF)  
HEREBY EXTINGUISHED



34



DATE: 09/29/10  
PROJECT: 08-4050

City of Williamsburg & County of James City  
Circuit Court: This PLAT was recorded on  
7 April 2011  
at 12:03 AM/PM. PB      PG       
DOCUMENT # 110007791  
BETSY B. WOOLRIDGE, CLERK  
Betsy B. Woolridge Clerk

STONEHOUSE - TRACT 12  
GS STONEHOUSE GREEN LAND SUB, LLC  
SEWER EASEMENT EXHIBIT-STONEHOUSE GLEN  
SHEET 2  
JAMES CITY COUNTY, VA

3 Large/Small Plat(s) Recorded  
herewith as # 110007791

**WSP • SELLS**  
Transportation & Infrastructure  
15401 Weston Parkway Suite 100 • Cary, NC 27513 • 919.678.0035  
www.wspells.com

110007791

(5.5' OFF R/W)

45

44

37

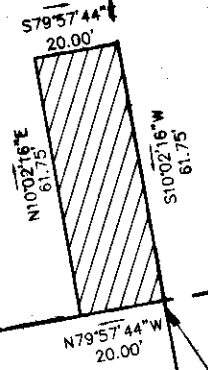
38

30' R.O.W. BUFFER

10' PRIVATE UTILITY EASEMENT  
**FIELDSTONE PARKWAY**  
VARIABLE WIDTH PUBLIC RIGHT-OF-WAY  
INSTR. # 060016179

CONSERVATION  
EASEMENT AREA  
(APPROX. 1,236 SF)  
HEREBY DEDICATED

- NOTES:
1. ALL EASEMENTS ARE SUBJECT TO CHANGE BASED ON FIELD CONDITIONS DURING CONSTRUCTION.
  2. ALL UTILITY EASEMENTS SHALL BE RECORDED ON THE FINAL PLAT AFTER JCSA ACCEPTANCE.
  3. REFER TO SUBDIVISION PLANS FOR TRACT 12 FOR ADDITIONAL DETAILS (S-0048-2009).



0 20 40  
1 INCH = 20 FEET  
NORTH

DATE: 09/29/10  
PROJECT: 08-4050

City of Williamsburg & County of James City  
Circuit Court: This PLAT was recorded on  
7 April 2011  
at 12:03 AM/PM. PB      PG       
DOCUMENT # 110007791  
BETSY B. WOOLRIDGE, CLERK  
Betsy B. Woolridge Clerk

STONEHOUSE - TRACT 12  
GS STONEHOUSE GREEN LAND SUB, LLC  
CONSERVATION EASEMENT EXHIBIT-STONEHOUSE GLEN  
SHEET 3  
JAMES CITY COUNTY, VA

Large/Small Plat(s) Recorded  
herewith as # 110007791

**WSP • SELLS**  
Transportation & Infrastructure  
15401 Weston Parkway Suite 100 • Cary, NC 27513 • 919.678.0035  
www.wspells.com