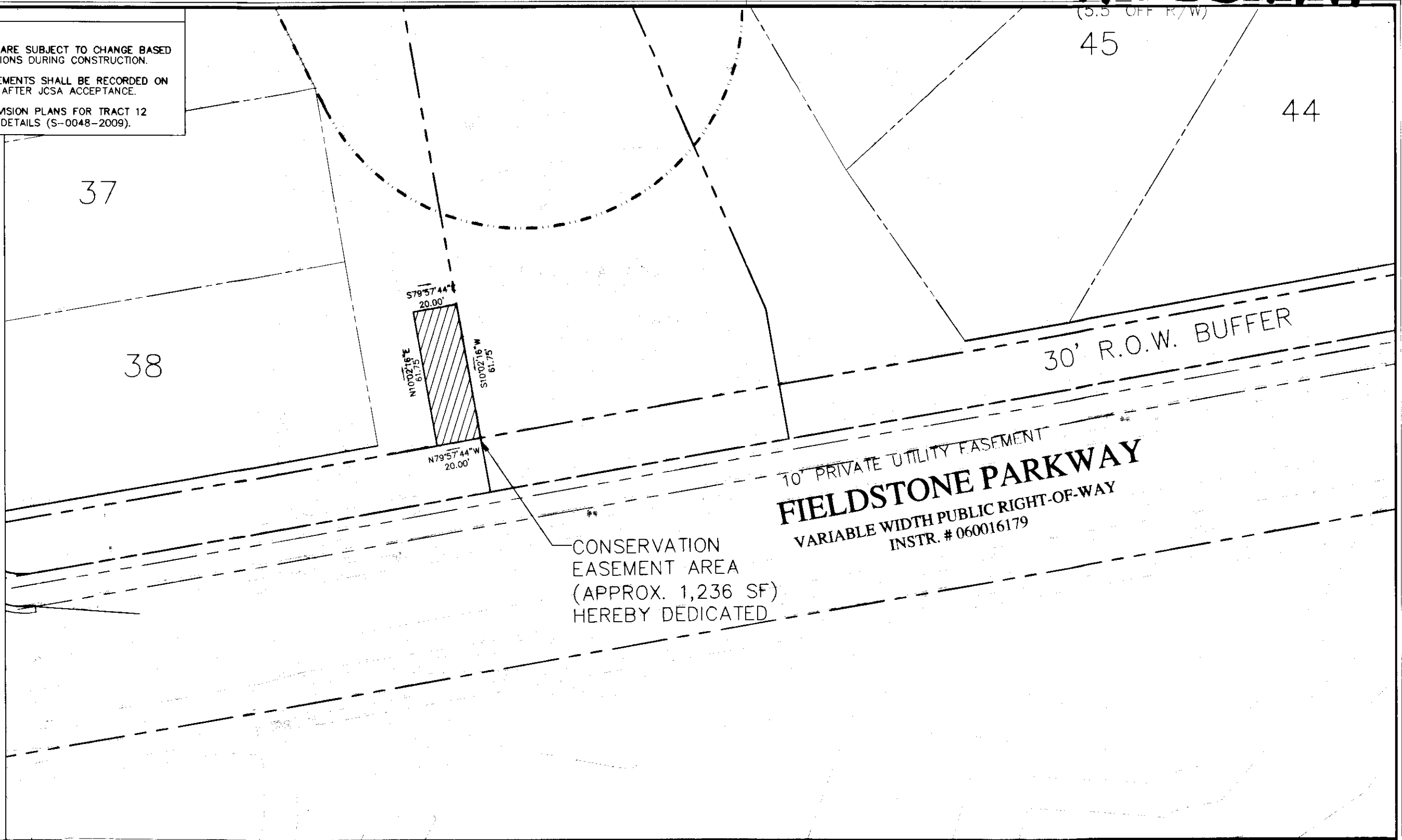


110007791

- NOTES:
1. ALL EASEMENTS ARE SUBJECT TO CHANGE BASED ON FIELD CONDITIONS DURING CONSTRUCTION.
  2. ALL UTILITY EASEMENTS SHALL BE RECORDED ON THE FINAL PLAT AFTER JCSA ACCEPTANCE.
  3. REFER TO SUBDIVISION PLANS FOR TRACT 12 FOR ADDITIONAL DETAILS (S-0048-2009).



10' PRIVATE UTILITY EASEMENT  
**FIELDSTONE PARKWAY**  
 VARIABLE WIDTH PUBLIC RIGHT-OF-WAY  
 INSTR. # 060016179

CONSERVATION  
 EASEMENT AREA  
 (APPROX. 1,236 SF)  
 HEREBY DEDICATED

DATE: 09/29/10  
 PROJECT: 08-4050

City of Williamsburg & County of James City  
 Circuit Court: This PLAT was recorded on  
7 April 2011  
 at 12:03 AM/PM. PB      PG       
 DOCUMENT # 110007791  
 BETSY B. WOOLRIDGE, CLERK  
Betsy B. Woolridge Clerk

STONEHOUSE - TRACT 12  
 GS STONEHOUSE GREEN LAND SUB, LLC  
 CONSERVATION EASEMENT EXHIBIT-STONEHOUSE GLEN  
 SHEET 3  
 JAMES CITY COUNTY, VA

Large/Small Plat(s) Recorded  
 herewith as # 110007791

**WSP • SELLS**  
 Transportation & Infrastructure  
 15401 Weston Parkway Suite 100 • Cary, NC 27513 • 919.678.0035  
 www.wspells.com