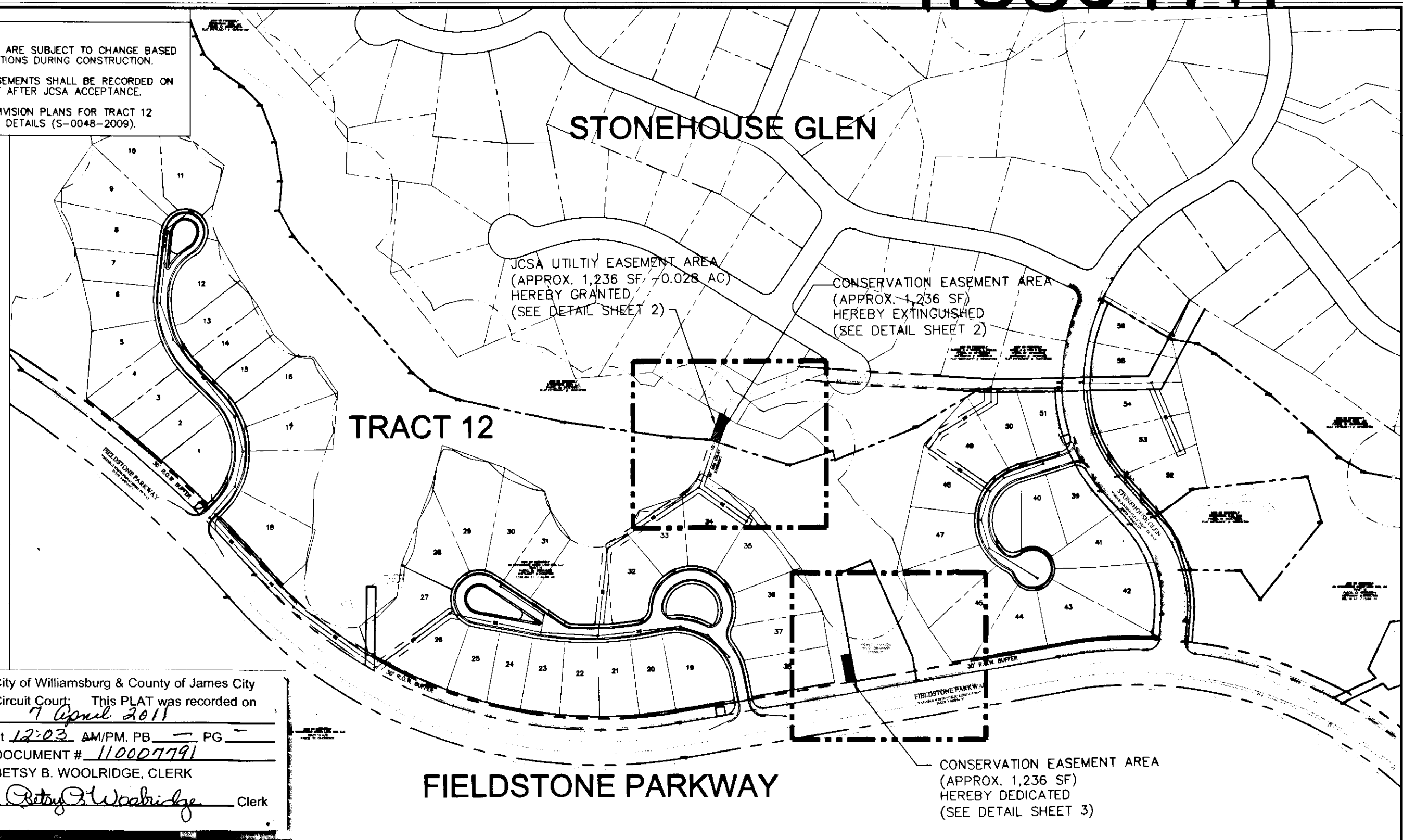
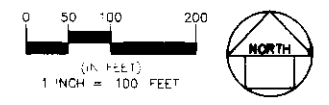


110007791

- NOTES:
1. ALL EASEMENTS ARE SUBJECT TO CHANGE BASED ON FIELD CONDITIONS DURING CONSTRUCTION.
 2. ALL UTILITY EASEMENTS SHALL BE RECORDED ON THE FINAL PLAT AFTER JCSA ACCEPTANCE.
 3. REFER TO SUBDIVISION PLANS FOR TRACT 12 FOR ADDITIONAL DETAILS (S-0048-2009).



City of Williamsburg & County of James City
 Circuit Court: This PLAT was recorded on
7 April 2011
 at 12:03 AM/PM. PB — PG —
 DOCUMENT # 110007791
 BETSY B. WOOLRIDGE, CLERK
Betsy B. Woolridge Clerk



3 Large/Small Plat(s) Recorded
 herewith as # 110007791

STONEHOUSE - TRACT 12
 GS STONEHOUSE GREEN LAND SUB, LLC
 SEWER / CONSERVATION EASEMENT EXHIBIT-STONEHOUSE GLEN
 SHEET 1
 JAMES CITY COUNTY, VA

WSP • SELLS
 Transportation & Infrastructure
 15401 Weston Parkway Suite 100 • Cary, NC 27513 • 919.678.0055
 www.wspells.com

DATE: 09/29/10
 PROJECT: 08-4050