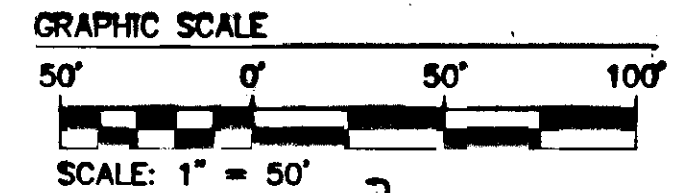
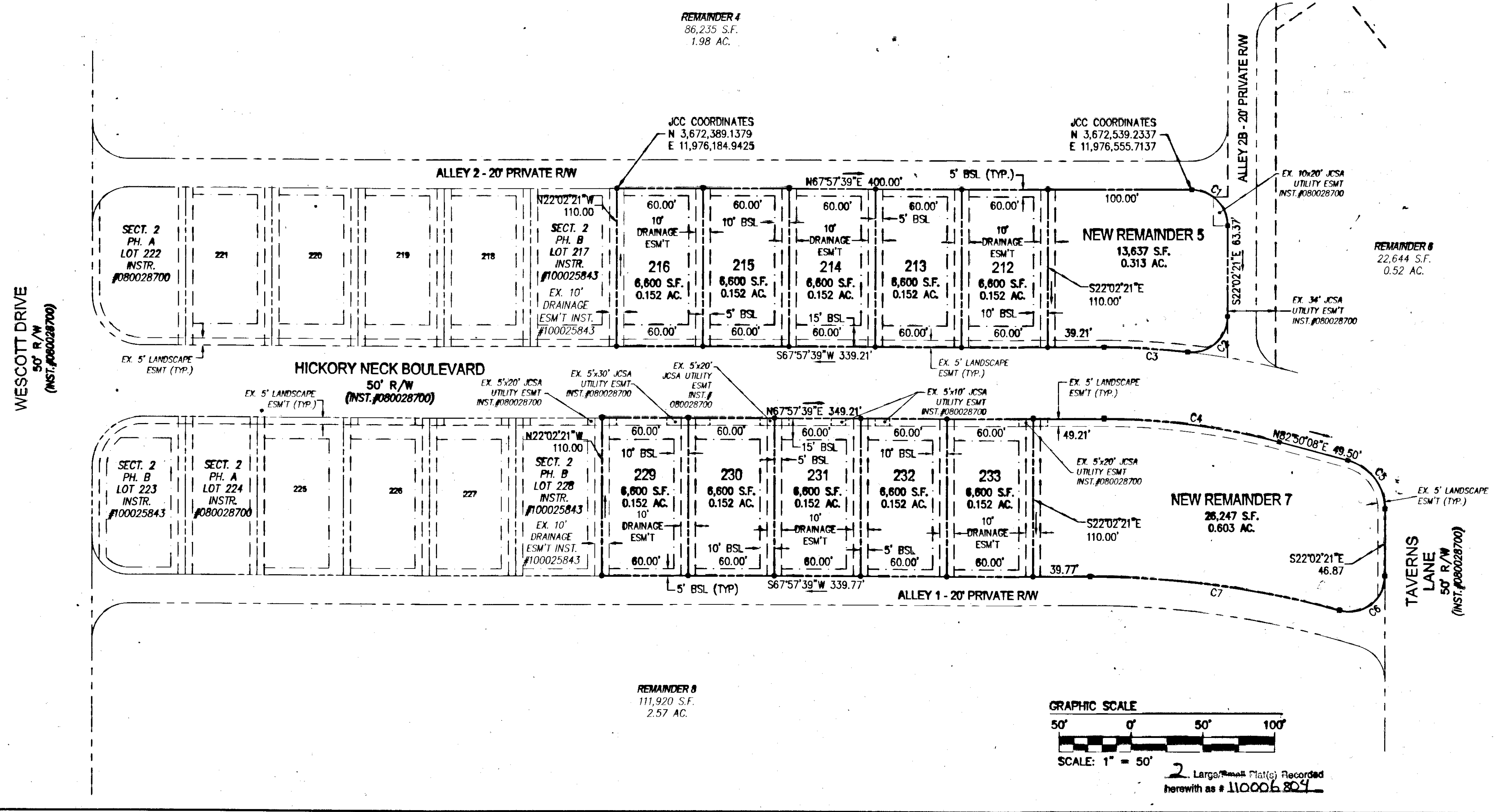
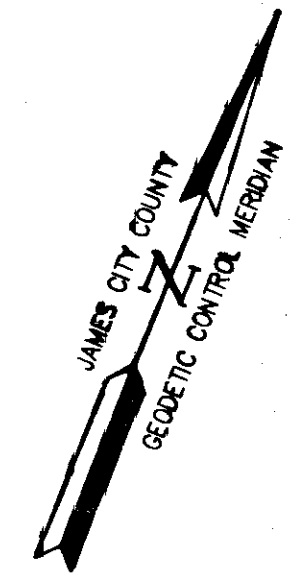


110006804

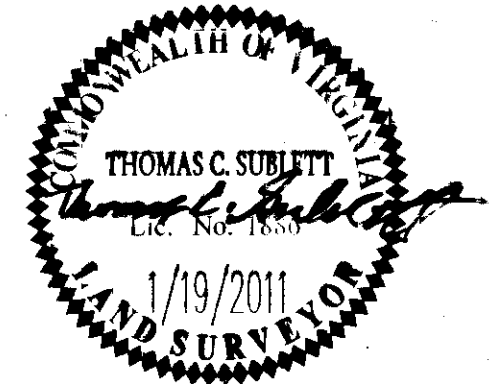
CURVE TABLE						
CURVE #	DELTA	RADIUS	LENGTH	TANGENT	CHORD	CHORD BEARING
C1	90°00'00"	25.00'	39.27'	25.00'	35.36'	S67°02'21"E
C2	96°20'45"	25.00'	42.04'	27.93'	37.26'	S26°08'02"W
C3	6°20'45"	525.00'	58.15'	29.10'	58.12'	S71°08'02"W
C4	14°52'29"	475.00'	123.32'	62.01'	122.97'	N75°23'54"E
C5	75°07'31"	35.00'	45.89'	26.92'	42.67'	S59°36'06"E
C6	105°22'09"	25.00'	45.98'	32.80'	39.77'	S30°38'44"W
C7	15°22'09"	655.00'	175.70'	88.38'	175.17'	S75°38'44"W



2 Large Scale Plat(s) Recorded herewith as # 110006804

Rev.	Date	Description	Revised By

City of Williamsburg & County of James City
Circuit Court: This PLAT was recorded on 3-18-2011
at 1:20 AM/PM, PB PG
DOCUMENT # 110006804
BETSY B. WOOLRIDGE, CLERK
Betsy B. Woolridge Clerk



AES
CONSULTING ENGINEERS
Hampton Roads | Central Virginia | Middle Peninsula

6248 Old Towne Road, Suite 1
Williamsburg, Virginia 23188
Phone: (757) 253-0040
Fax: (757) 220-8994
www.aesva.com

PLAT OF SUBDIVISION OF A PORTION OF REMAINDERS 5 & 7 WHITE HALL SECTION 2, PHASE H
OWNER: RAUCH DEVELOPMENT CO., L.L.C.
JCC CASE NO. S-0055-2008

STONEHOUSE DISTRICT JAMES CITY COUNTY VIRGINIA

Project Contacts:	TCS/JFS
Project Number:	9048-11
Scale:	1"=20'
Date:	1/19/11
Sheet Number	2 OF 2