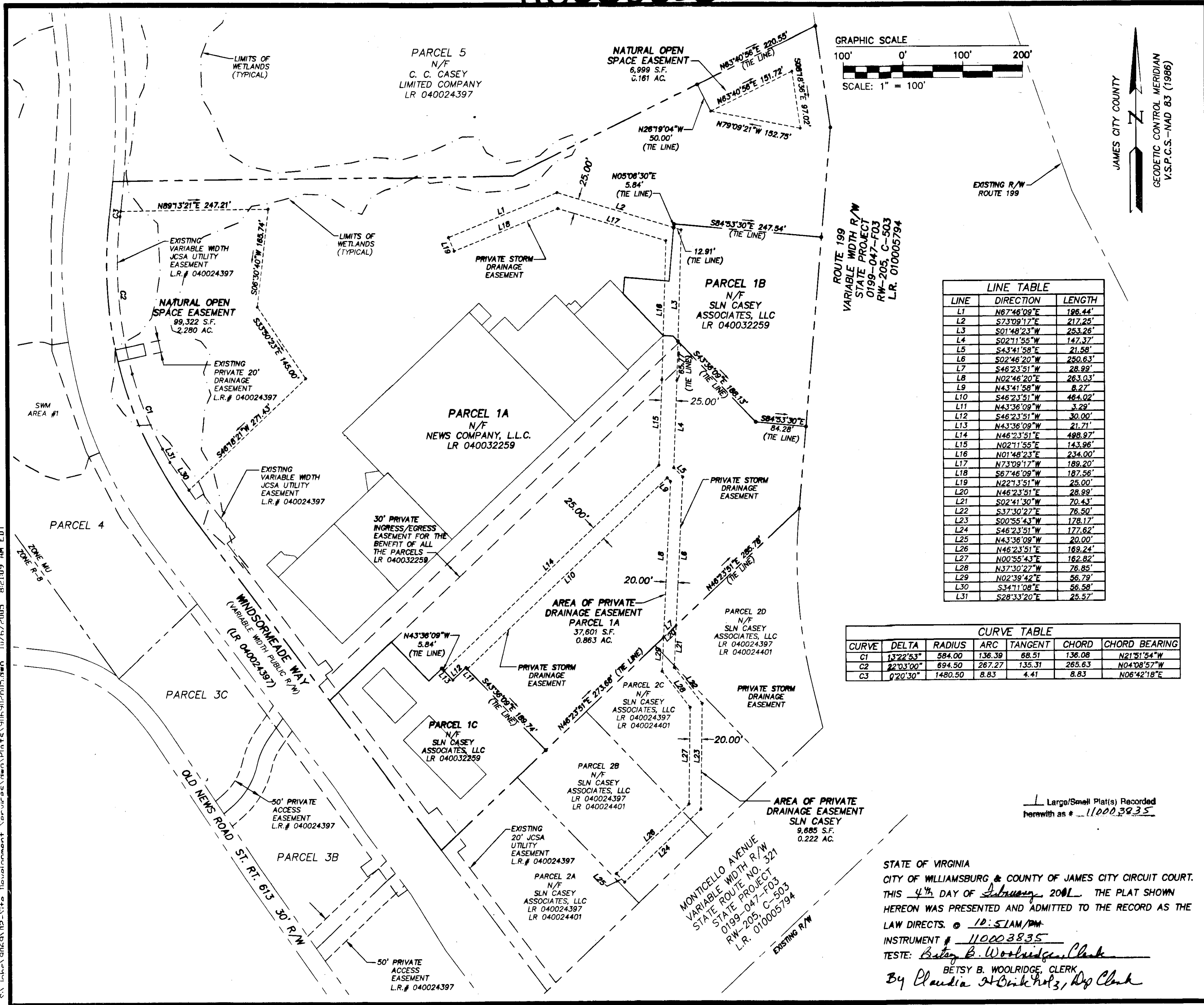


110003835

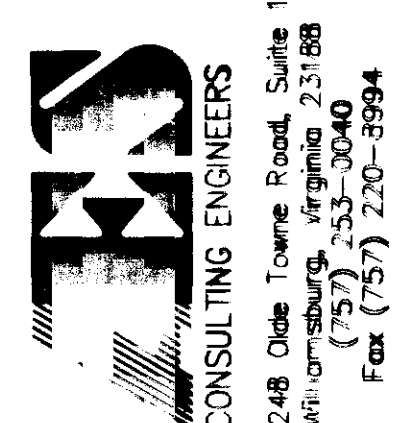
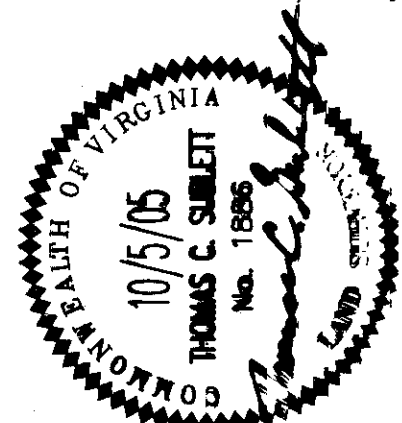


LINE TABLE

LINE	DIRECTION	LENGTH
L1	N67°46'09"E	196.44'
L2	S73°09'17"E	217.25'
L3	S01°48'23"W	253.26'
L4	S02°11'55"W	147.37'
L5	S43°41'58"E	21.58'
L6	S02°46'20"W	250.63'
L7	S46°23'51"W	28.99'
L8	N02°46'20"E	263.03'
L9	N43°41'58"W	8.27'
L10	S46°23'51"W	464.02'
L11	N43°36'09"W	3.29'
L12	S46°23'51"W	30.00'
L13	N43°36'09"W	21.71'
L14	N46°23'51"E	498.97'
L15	N02°11'55"E	143.96'
L16	N01°48'23"E	234.00'
L17	N73°09'17"W	189.20'
L18	S67°46'09"W	187.56'
L19	N22°13'51"W	25.00'
L20	N46°23'51"E	28.99'
L21	S02°41'30"W	70.43'
L22	S37°30'27"E	76.50'
L23	S00°55'43"W	178.17'
L24	S46°23'51"W	177.62'
L25	N43°36'09"W	20.00'
L26	N46°23'51"E	169.24'
L27	N00°55'43"E	162.82'
L28	N37°30'27"W	76.85'
L29	N02°39'42"E	56.79'
L30	S34°11'08"E	56.58'
L31	S28°33'20"E	25.57'

CURVE TABLE

CURVE	DELTA	RADIUS	ARC	TANGENT	CHORD	CHORD BEARING
C1	132°2'53"	584.00	136.39	68.51	136.08	N21°51'54"W
C2	22°03'00"	694.50	267.27	135.31	265.63	N04°08'57"W
C3	0°20'30"	1480.50	8.83	4.41	8.83	N06°42'18"E



PLAT OF EASEMENTS  
SHOWING PRIVATE DRAINAGE AND  
NATURAL OPEN SPACES  
BEING THE PROPERTY OF  
NEWS COMPANY L.L.C. AND  
SLN CASEY ASSOCIATES, L.L.C.

DESIGNED: AES  
DRAWN: JFS/JDB  
SCALE: 1"=100'  
DATE: 10/5/05  
PROJECT NO.: 9069-02  
DRAWING NO.: 1 OF 1

STATE OF VIRGINIA  
BERKELEY DISTRICT JAMES CITY COUNTY

STATE OF VIRGINIA  
CITY OF WILLIAMSBURG & COUNTY OF JAMES CITY CIRCUIT COURT.  
THIS 4<sup>th</sup> DAY OF February 2001. THE PLAT SHOWN  
HEREON WAS PRESENTED AND ADMITTED TO THE RECORD AS THE  
LAW DIRECTS. @ 10:51AM/PM  
INSTRUMENT # 110003835  
TESTE: Betsy B. Woolridge, Clerk  
By Claudia A. Brinkholz, Dep. Clerk

C:\inetpub\wwwroot\Site\Development\Survey\Plats\916\916\2005\_10\16\2005\_812109 AM EDIT