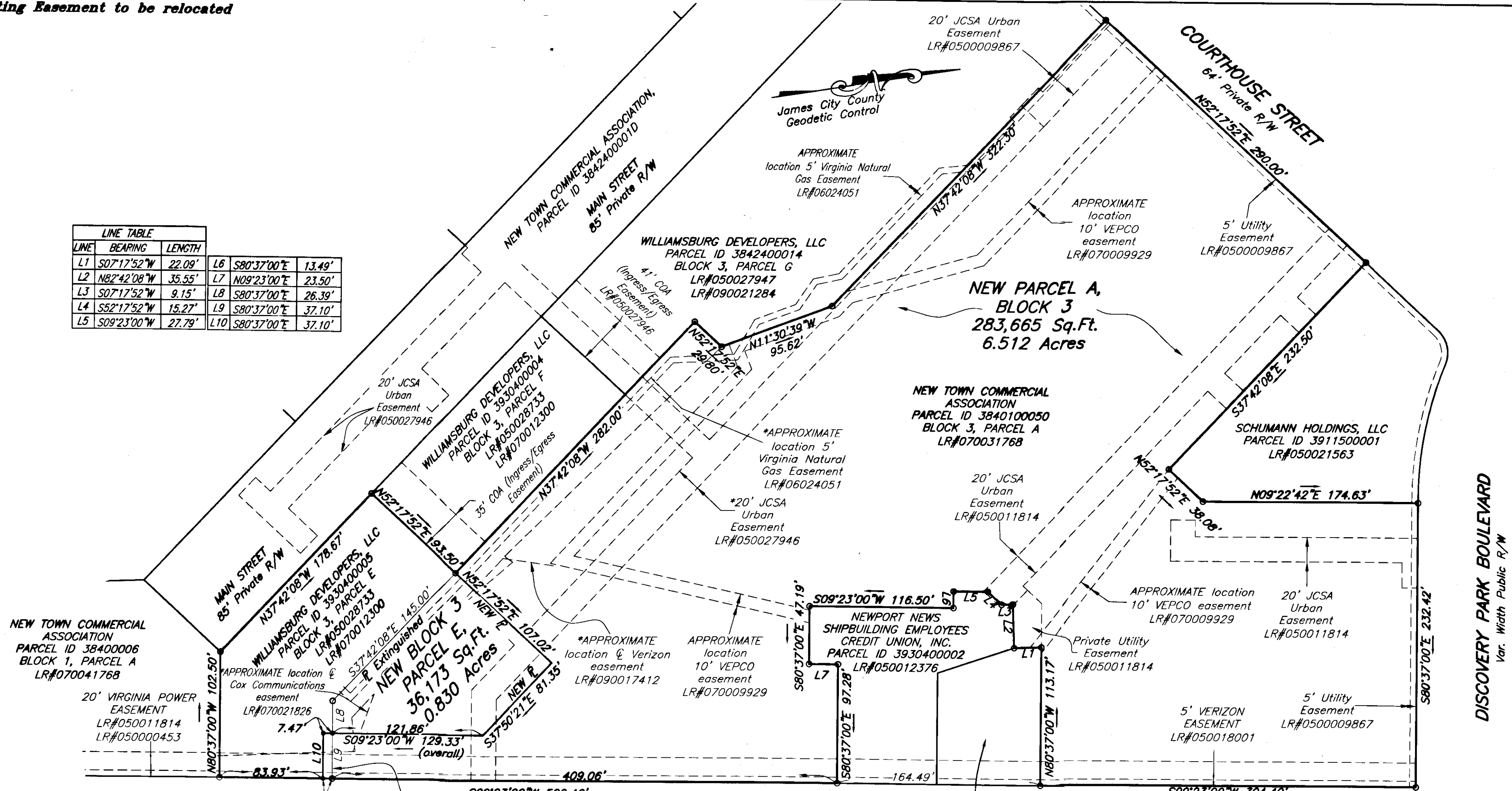


110001312

• Existing Easement to be relocated

| LINE TABLE |             |        |     |             |        |
|------------|-------------|--------|-----|-------------|--------|
| LINE       | BEARING     | LENGTH | L6  | S80°37'00"E | 13.49' |
| L1         | S07°17'52"W | 22.09' | L7  | N09°23'00"E | 23.50' |
| L2         | N82°42'08"W | 35.55' | L8  | S80°37'00"E | 26.39' |
| L3         | S07°17'52"W | 9.15'  | L9  | S80°37'00"E | 37.10' |
| L4         | S52°17'52"W | 15.27' | L10 | S80°37'00"E | 37.10' |
| L5         | S09°23'00"W | 27.79' |     |             |        |



STATE OF VIRGINIA

City of Williamsburg and County of James City Circuit Court, this 12 day of Jan 2011

The plat shown hereon was presented and admitted to the record as the law directs @ 1:40 am/pm

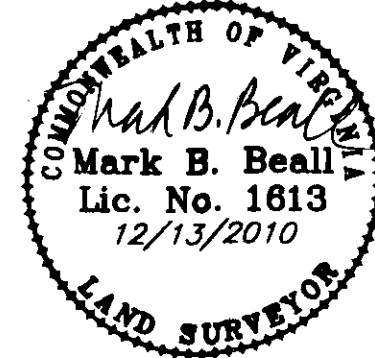
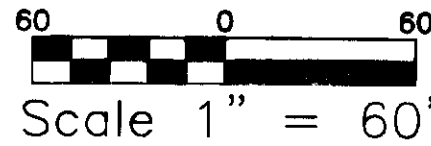
Instrument # 110001312

Teste: BETSY B. WOOLRIDGE, CLERK

2 Large/Small Plat(s) Recorded herewith as # 110001312

Bryson Hallman, Clerk

IRONBOUND ROAD  
Rte. 615  
Var. Width Public R/W



PLANNERS • ARCHITECTS  
ENGINEERS • SURVEYORS  
15871 City View Drive  
Suite 200  
Midlothian, Virginia 23113  
Phone: 804/794-0571  
FAX: 804/794-2635

PLAT SHOWING PARCEL LINE  
MODIFICATION BETWEEN NEW TOWN  
COMMERCIAL ASSOCIATION AND  
WILLIAMSBURG DEVELOPERS, LLC

BERKELEY DISTRICT  
JAMES CITY COUNTY, VIRGINIA  
DATE: DECEMBER 13, 2010 SCALE: 1"=60'

SHEET 2 OF 2

JOB #C1000301.00