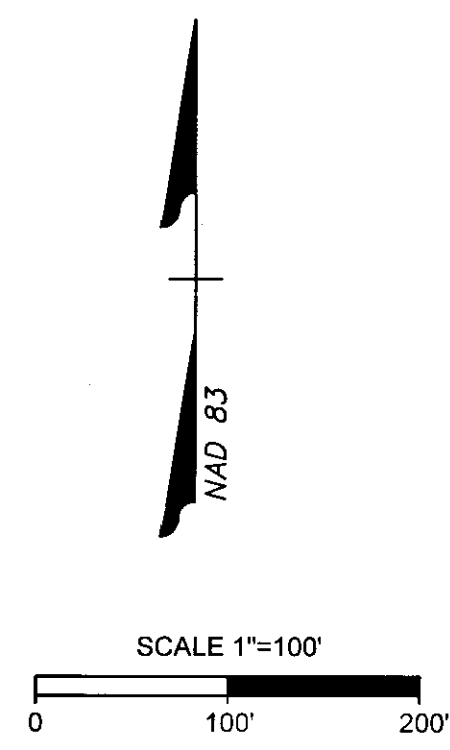
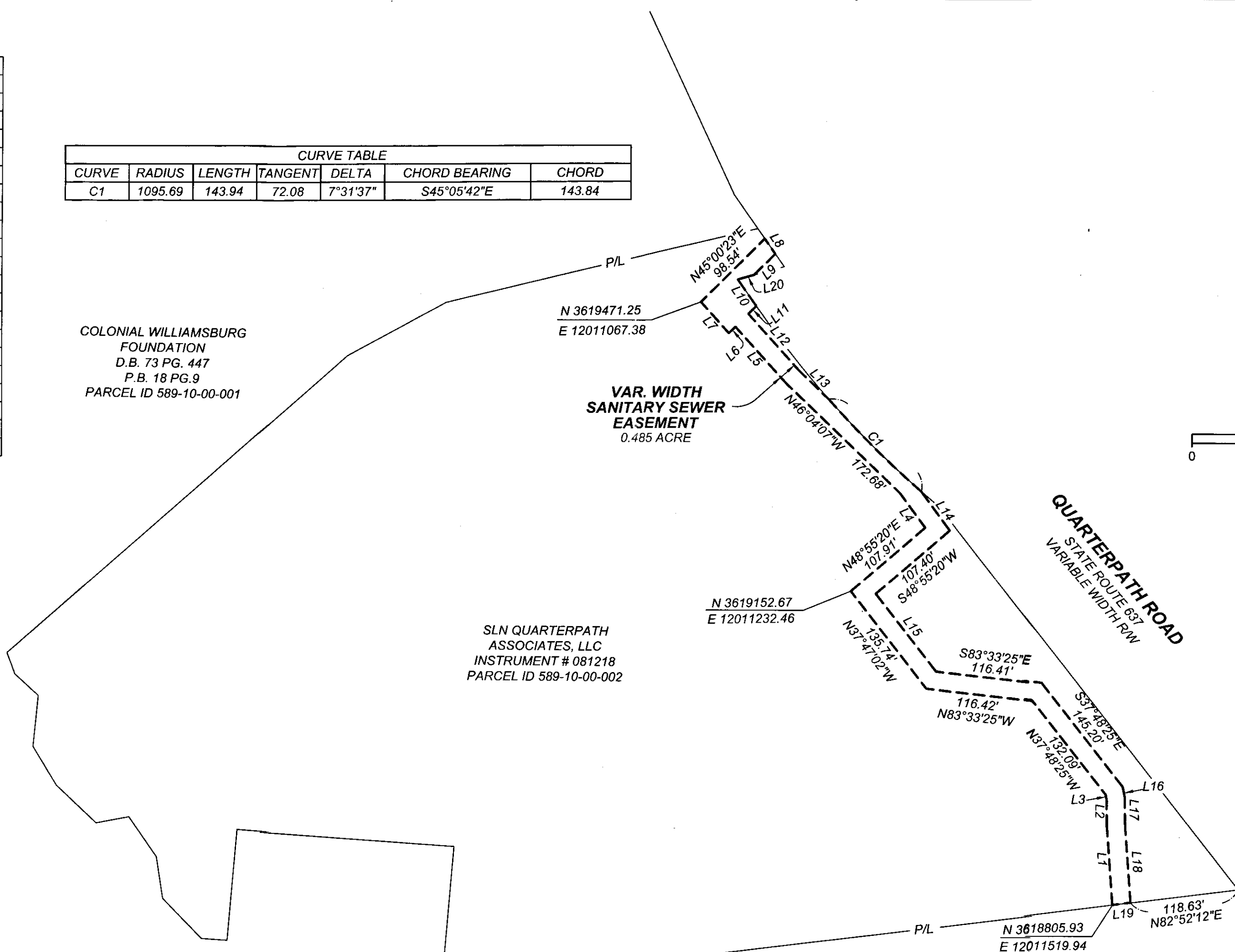


100617

LINE	BEARING	DISTANCE
L1	N04°03'25"W	89.05
L2	N00°30'27"W	27.74
L3	N11°30'05"W	5.58
L4	N36°14'00"W	47.23
L5	N41°57'09"W	84.31
L6	S45°00'23"W	10.01
L7	N41°57'09"W	45.92
L8	S34°45'37"E	20.32
L9	S45°00'23"W	32.79
L10	S34°52'19"E	35.49
L11	S45°00'23"W	12.20
L12	S41°57'09"E	84.65
L13	S46°04'07"E	43.96
L14	S36°14'00"E	53.02
L15	S37°47'02"E	108.42
L16	S11°30'05"E	12.18
L17	S00°30'27"E	29.05
L18	S04°03'25"E	87.36
L19	S82°52'12"W	20.03
L20	S74°27'41"W	18.48

CURVE	RADIUS	LENGTH	TANGENT	DELTA	CHORD BEARING	CHORD
C1	1095.69	143.94	72.08	7°31'37"	S45°05'42"E	143.84



Y:\901\23150\SANITARY SEW ESMT.dwg Plotted on 4/12/2010 9:32 AM by Marilyn Farmer

COLONIAL WILLIAMSBURG FOUNDATION
D.B. 50 PG. 447
P.B. 12 PG. 4
PARCEL ID 588-0A-00-001

COLONIAL WILLIAMSBURG FOUNDATION
D.B. 73 PG. 447
P.B. 18 PG. 9
PARCEL ID 589-10-00-001

SLN QUARTERPATH ASSOCIATES, LLC
INSTRUMENT # 081218
PARCEL ID 589-10-00-002

- NOTES:
- 1) THIS PLAT WAS PREPARED WITHOUT THE BENEFIT OF A TITLE BINDER, THEREFORE ALL EXISTING EASEMENTS MAY NOT BE SHOWN.
 - 2) BOUNDARY INFORMATION TAKEN FROM A PLAT ENTITLED: "PLAT SHOWING BOUNDARY LINE ADJUSTMENT AND LOT LINE VACATION ON A PARCEL BEING 14.88 ACRES± OWNED BY THE COLONIAL WILLIAMSBURG FOUNDATION" BY AES CONSULTING ENGINEERS, DATED JANUARY 18, 2005.
 - 3) EASEMENT LINES WERE DETERMINED USING AS-BUILT SANITARY SEWER AND FORCE MAIN RECORD DRAWINGS BY FLORA SURVEYING ASSOCIATES DATED 8-6-09 AND REVISED 8-13-09

STATE ROUTE #199
VARIABLE WIDTH RW

City of Williamsburg & County of James City
Circuit Court: This PLAT was recorded on
at 11:38 AM on 3 May 2010 PG 1
DOCUMENT # 100617
BETSY B. WOOLRIDGE, CLERK
Betsy B. Woolridge Clerk

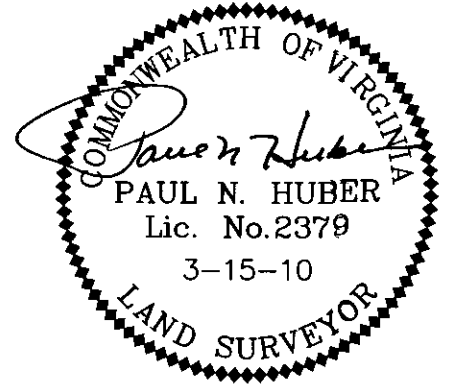


EXHIBIT A
PLAT SHOWING A VARIABLE
WIDTH SANITARY SEWER
EASEMENT ACROSS THE
PROPERTY OF SLN
QUARTERPATH ASSOCIATES, LLC

CITY OF WILLIAMSBURG, VA	
DATE: MARCH 15, 2010	SCALE: 1"=100'
SHEET 1 OF 1	J.N.:23150
DRAWN BY: R.L.F.	CHECK BY: M.S.F.

Large/Small Plat(s) Recorded
herewith as # 100617

THIS DRAWING PREPARED AT THE
CORPORATE OFFICE
1001 Boulders Parkway, Suite 300 | Richmond, VA 23225
TEL: 804-686-0500 FAX: 804-686-9018 www.timmons.com
 YOUR DESIGN ENHANCED THROUGH OURS.
 Site Development | Residential | Infrastructure | Technology

TIMMONS GROUP