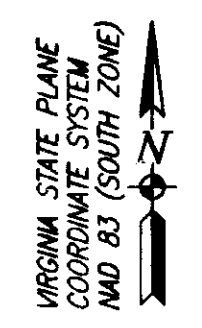
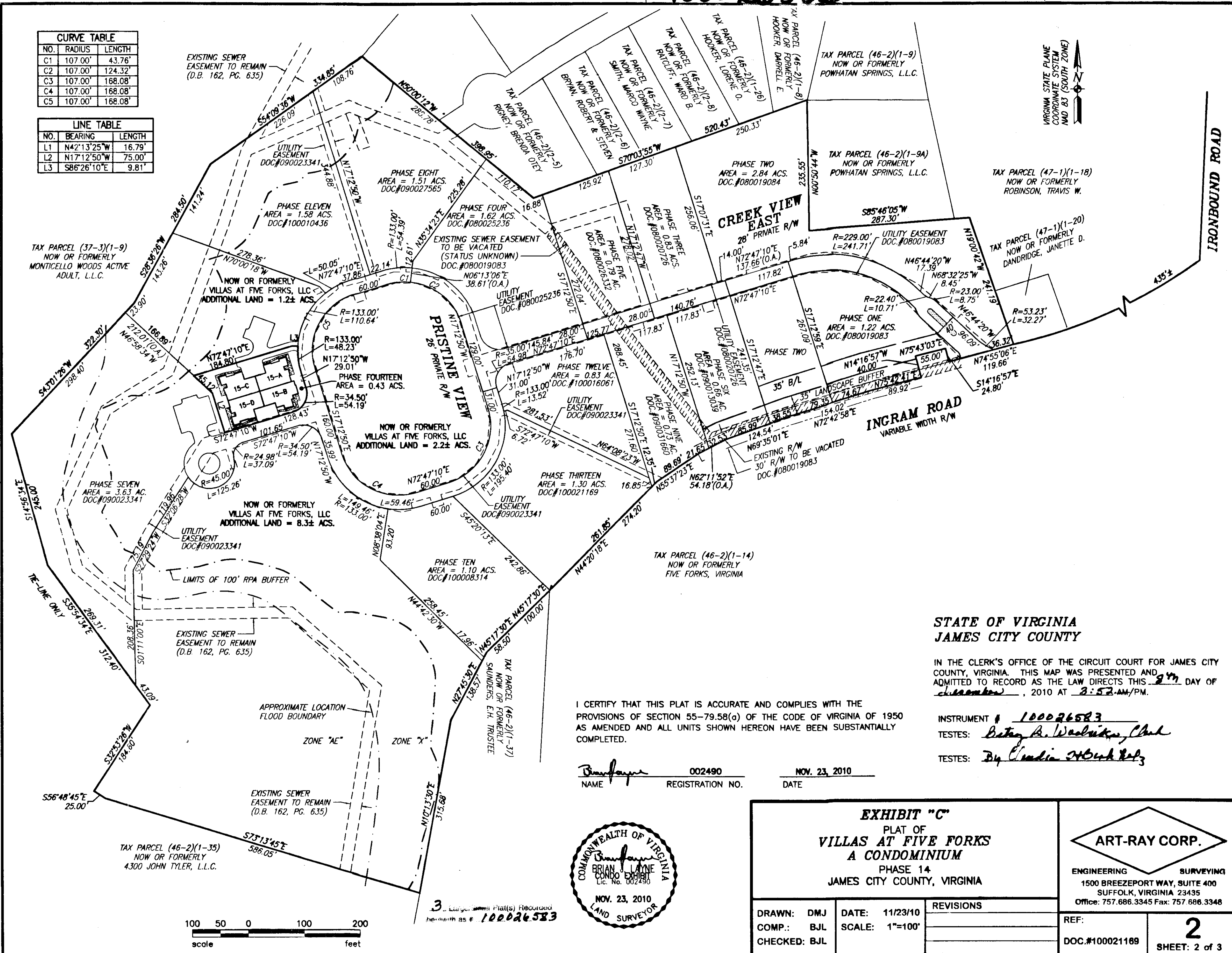


100026583

CURVE TABLE		
NO.	RADIUS	LENGTH
C1	107.00'	43.76'
C2	107.00'	124.32'
C3	107.00'	168.08'
C4	107.00'	168.08'
C5	107.00'	168.08'

LINE TABLE		
NO.	BEARING	LENGTH
L1	N42°13'25"W	16.79'
L2	N17°12'50"W	75.00'
L3	S86°26'10"E	9.81'



**STATE OF VIRGINIA
JAMES CITY COUNTY**

IN THE CLERK'S OFFICE OF THE CIRCUIT COURT FOR JAMES CITY COUNTY, VIRGINIA. THIS MAP WAS PRESENTED AND ADMITTED TO RECORD AS THE LAW DIRECTS THIS 27 DAY OF December, 2010 AT 2:52 AM/PM.

I CERTIFY THAT THIS PLAT IS ACCURATE AND COMPLIES WITH THE PROVISIONS OF SECTION 55-79.58(O) OF THE CODE OF VIRGINIA OF 1950 AS AMENDED AND ALL UNITS SHOWN HEREON HAVE BEEN SUBSTANTIALLY COMPLETED.

INSTRUMENT # 100026583
TESTES: Betsy B. Woolsten, Clerk
TESTES: By Claudia H. Harkley

Brian J. Layne 002490 NOV. 23, 2010
NAME REGISTRATION NO. DATE

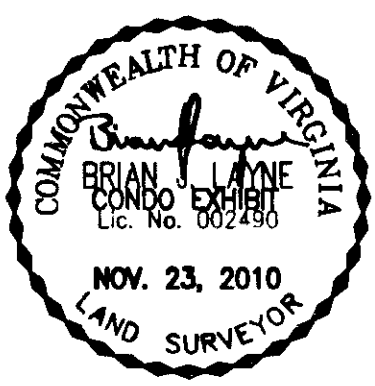


EXHIBIT "C"
PLAT OF
**VILLAS AT FIVE FORKS
A CONDOMINIUM**
PHASE 14
JAMES CITY COUNTY, VIRGINIA

ART-RAY CORP.
ENGINEERING SURVEYING
1500 BREEZEPORT WAY, SUITE 400
SUFFOLK, VIRGINIA 23435
Office: 757.686.3345 Fax: 757.686.3348

DRAWN: DMJ	DATE: 11/23/10	REVISIONS
COMP.: BJL	SCALE: 1"=100'	
CHECKED: BJL		

REF:	2
DOC.#100021169	



3 Large Format Plats(s) Recorded herewith as # 100026583