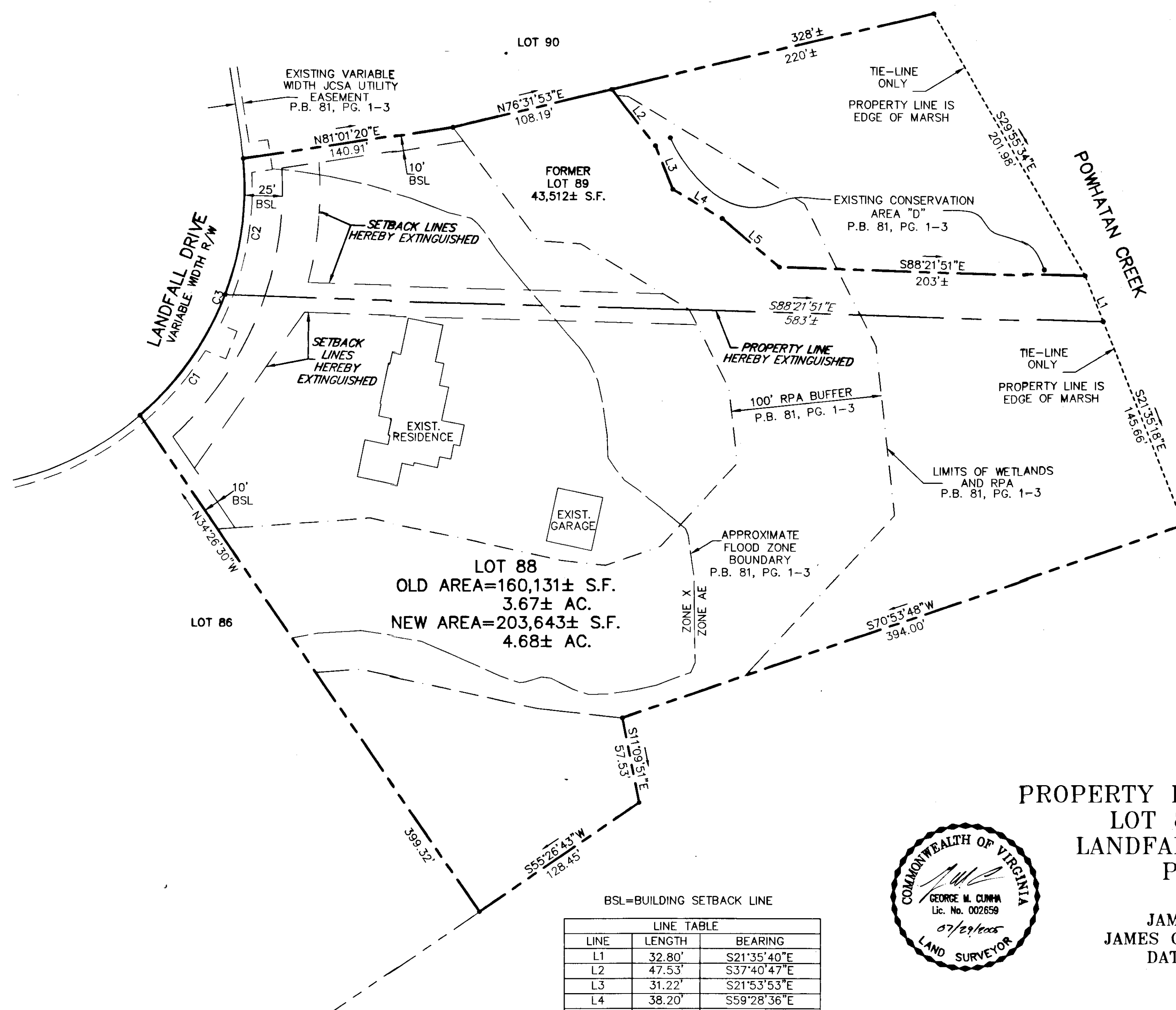


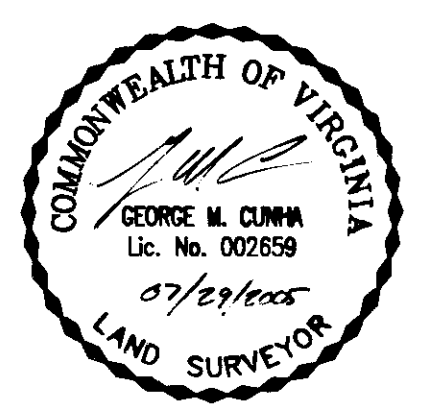
100025798



City of Williamsburg & County of James City  
 Circuit Court: This PLAT was recorded on  
 at 2 November 2010  
 at 10:53 AM/PM, PG. PG  
 DOCUMENT # 100025798  
 BETSY B. WOOLRIDGE, CLERK  
*Betsy B. Woolridge* Clerk

**PLAT OF  
 PROPERTY LINE EXTINGUISHMENT  
 LOT 88 AND LOT 89  
 LANDFALL AT JAMESTOWN  
 PHASE FOUR**

JAMESTOWN DISTRICT,  
 JAMES CITY COUNTY, VIRGINIA  
 DATE: JUNE 29, 2005  
 SCALE: 1"=50'  
 SHEET 2 OF 2



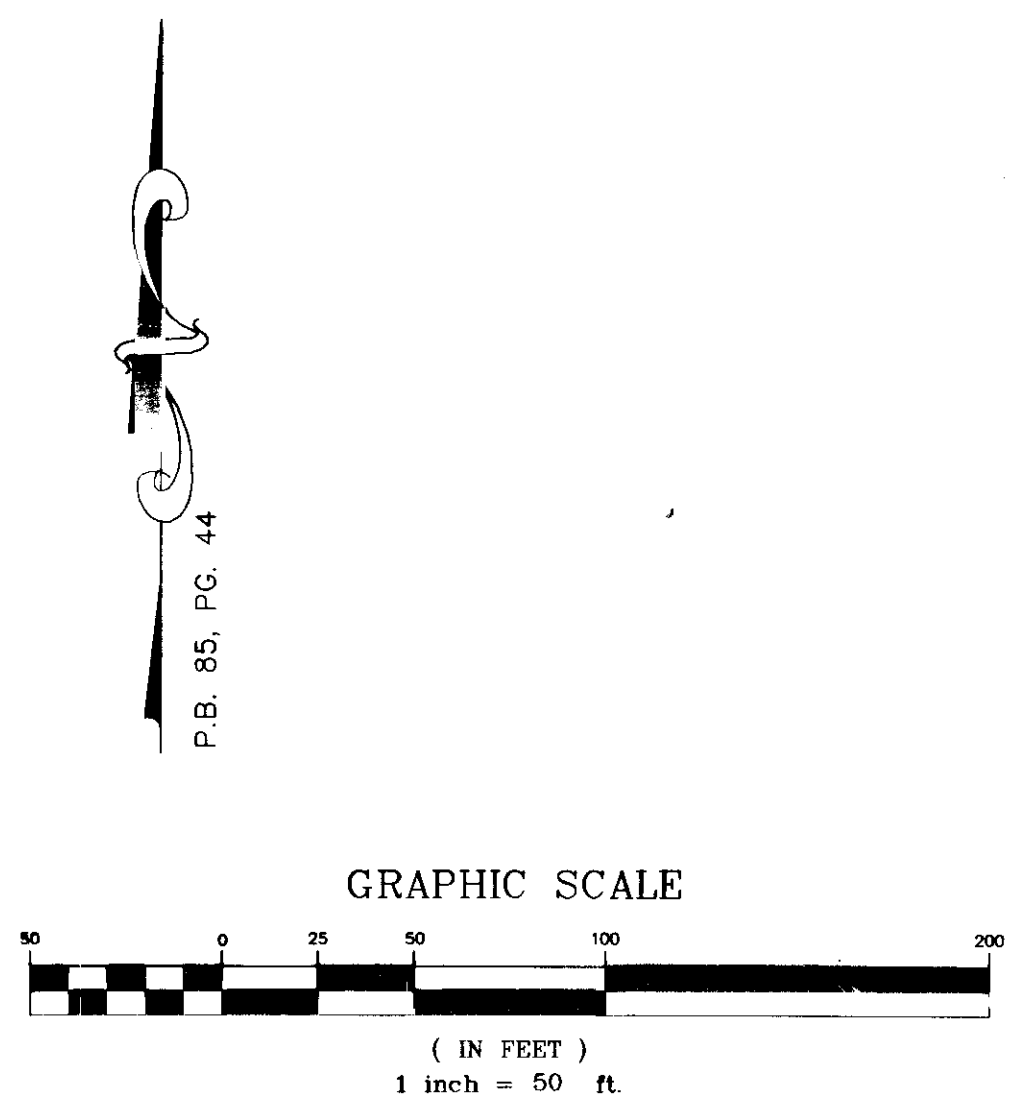
BSL=BUILDING SETBACK LINE

LINE TABLE		
LINE	LENGTH	BEARING
L1	32.80'	S21°35'40"E
L2	47.53'	S37°40'47"E
L3	31.22'	S21°53'53"E
L4	38.20'	S59°28'36"E
L5	49.73'	S49°50'35"E

CURVE TABLE						
CURVE	LENGTH	RADIUS	TANGENT	CHORD	CHORD BEARING	DELTA
C1	99.77'	200.00'	50.95'	98.74'	N34°52'36"E	28°34'57"
C2	92.09'	200.00'	46.88'	91.28'	N07°23'40"E	26°22'54"
C3	191.86'	200.00'	104.03'	184.59'	N21°41'09"E	54°57'51"

2 Large/Small Plat(s) Recorded  
 herewith as # 100025798

**VHB** Vanasse Hangen Brustlin, Inc.  
 Transportation Land Development Environmental Services  
 351 McLaw's Circle, Suite 3  
 Williamsburg, Virginia 23185-6316  
 (757) 220 0500 FAX (757) 220 8544



2005068-000.00 Landfall Lot 88-89 Pl Ext Plat\Lot88-PL\_Ext-EDIT.dwg

DRAWN BY: CO PROJ. NO.: 20050068-000.00  
 CHKD. BY: GMC DWG. NO.: 16133AW