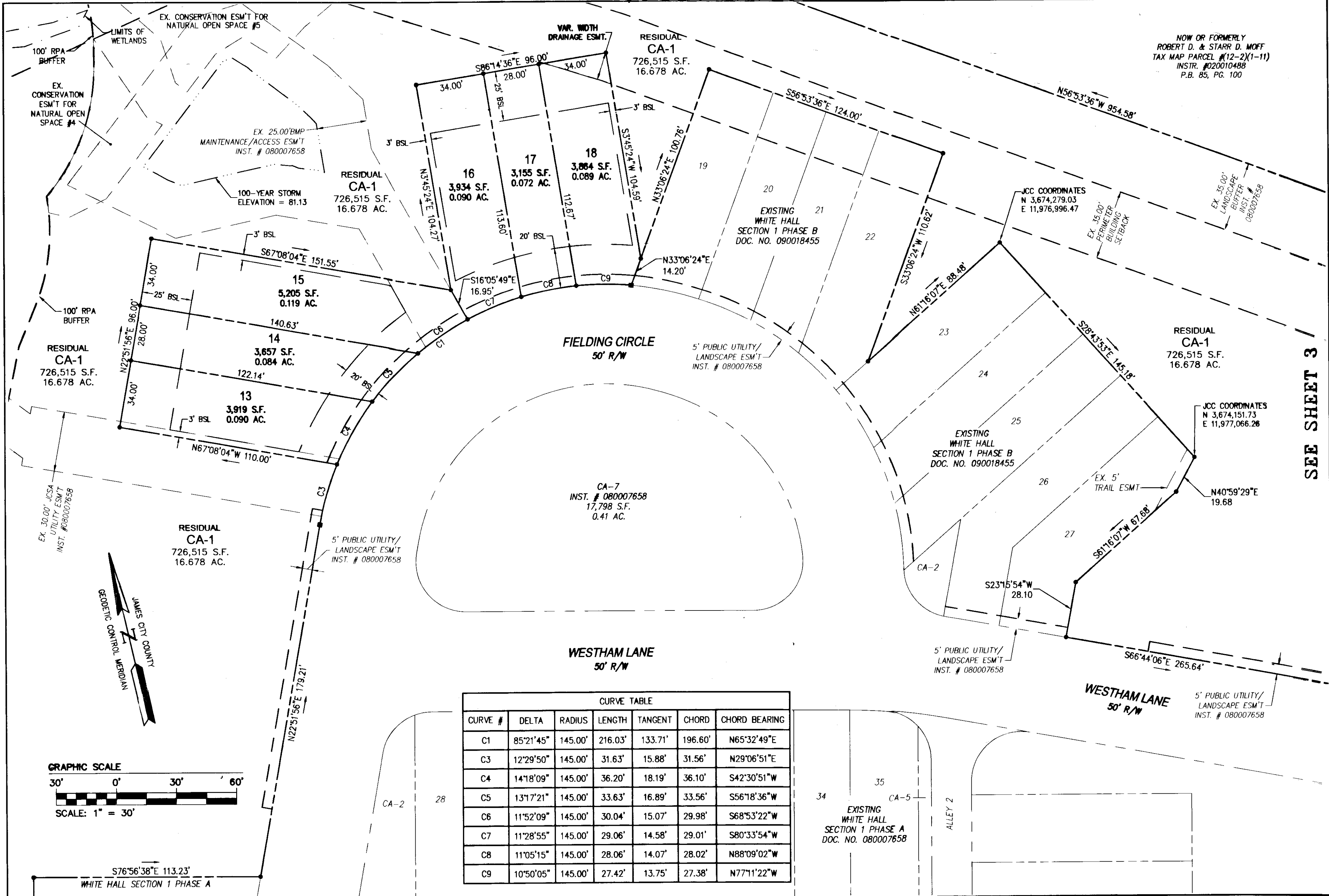


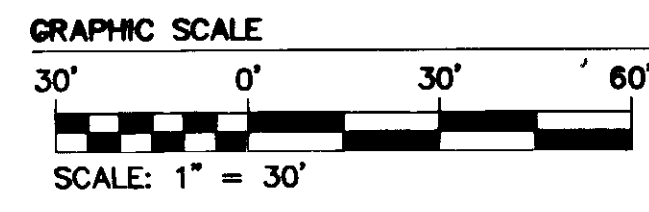
100024410



NOW OR FORMERLY
ROBERT D. & STARR D. MOFF
TAX MAP PARCEL #12-2(1-11)
INSTR. #020010488
P.B. 85, PG. 100

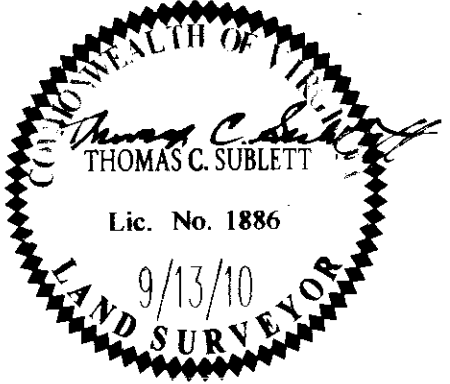
SEE SHEET 3

CURVE TABLE						
CURVE #	DELTA	RADIUS	LENGTH	TANGENT	CHORD	CHORD BEARING
C1	85°21'45"	145.00'	216.03'	133.71'	196.60'	N65°32'49"E
C3	12°29'50"	145.00'	31.63'	15.88'	31.56'	N29°06'51"E
C4	14°18'09"	145.00'	36.20'	18.19'	36.10'	S42°30'51"W
C5	13°17'21"	145.00'	33.63'	16.89'	33.56'	S56°18'36"W
C6	11°52'09"	145.00'	30.04'	15.07'	29.98'	S68°53'22"W
C7	11°28'55"	145.00'	29.06'	14.58'	29.01'	S80°33'54"W
C8	11°05'15"	145.00'	28.06'	14.07'	28.02'	N88°09'02"W
C9	10°50'05"	145.00'	27.42'	13.75'	27.38'	N77°11'22"W



1	10/4/10	REVISED PER COUNTY REQUIREMENTS	JFS
Rev.	Date	Description	Revised By

City of Williamsburg & County of James City
Circuit Court: This PLAT was recorded on
18 Nov 2010
at 9:02 AM/PM, PG-
DOCUMENT # 100024410
BETSY B. WOOLRIDGE, CLERK
Betsy B. Woolridge Clerk



AES
CONSULTING ENGINEERS
Hampton Roads | Central Virginia | Middle Peninsula

5248 Olde Towne Road, Suite 1
Williamsburg, Virginia 23188
Phone: (757) 253-0040
Fax: (757) 220-8994
www.aesa.com

PLAT OF SUBDIVISION OF PARCEL CA-1
WHITE HALL
SECTION 1, PHASE C
LOTS 13-18 AND 98-102
DEVELOPER: HHHUNT COMMUNITIES
STONEHOUSE DISTRICT JAMES CITY COUNTY VIRGINIA

Project Contacts: JFB
Project Number: 9048-10
Scale: 1"=30' Date: 9/13/10
Sheet Number
2 OF 3