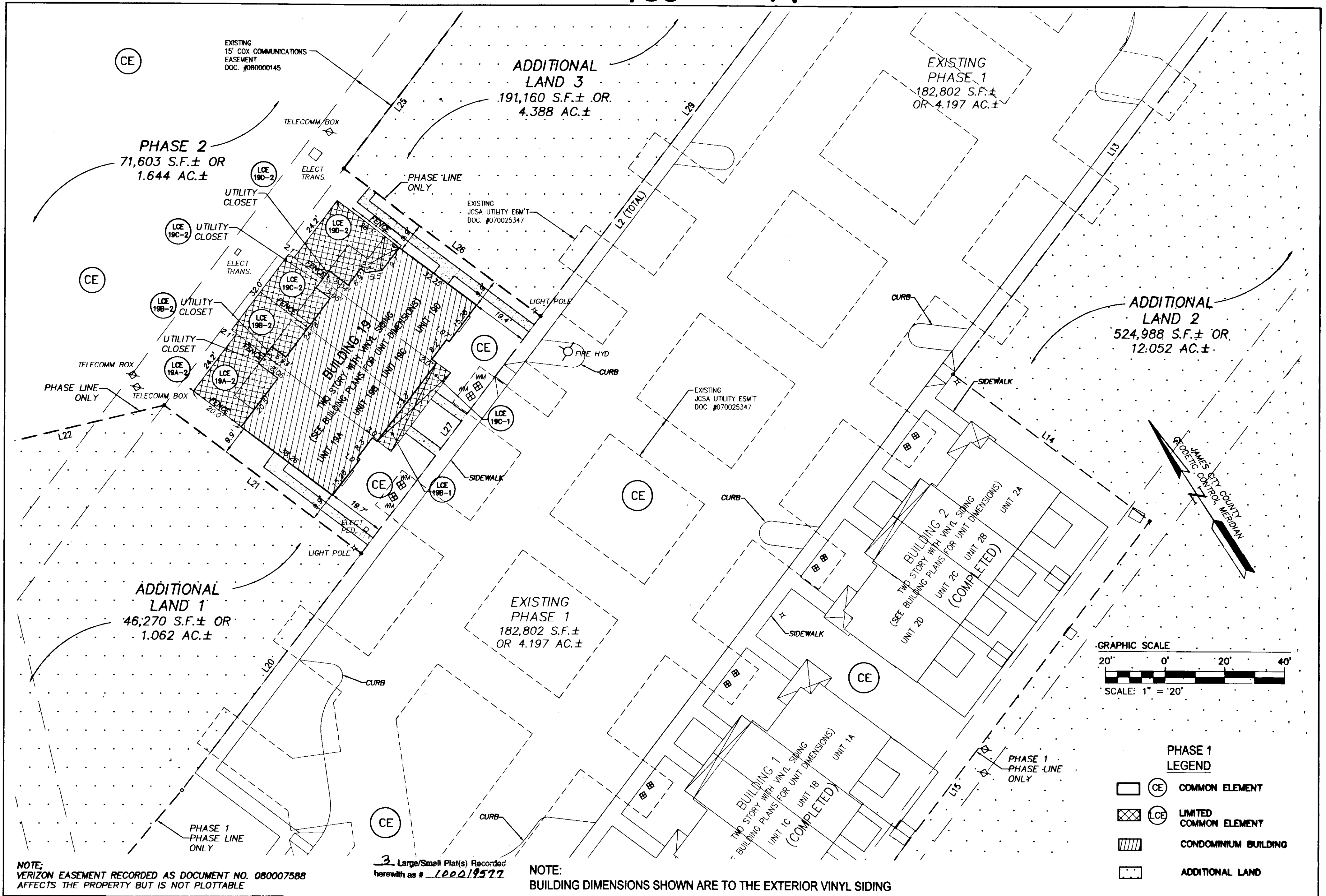
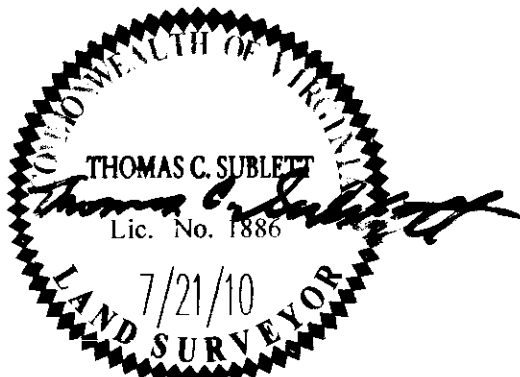


100019577



City of Williamsburg & County of James City			
Circuit Court: This PLAT was recorded on			
17 September 2010			
at 10:53 AM/PM, PB PG			
DOCUMENT # 100019577			
BETSY B. WOOLRIDGE, CLERK			
<i>Betsy B. Woolridge</i> Clerk			
1	8/12/10	REVISED PHASE 2 AREA AND CREATED ADDITIONAL LAND 3	JFS
Rev.	Date	Description	Revised By



AES
CONSULTING ENGINEERS
Hampton Roads | Central Virginia | Middle Peninsula

5248 Old Towne Road, Suite 1
Williamsburg, Virginia 23188
Phone: (757) 253-0040
Fax: (757) 220-8994
www.aesva.com

**PLAT OF CONDOMINIUM
WEATHERLY AT WHITEHALL
PHASE 2**

STONEHOUSE DISTRICT JAMES CITY COUNTY VIRGINIA

Project Contacts: JFS	
Project Number: 9048-08	
Scale: 1"=20'	Date: 7/21/10
Sheet Number	
3 OF 3	