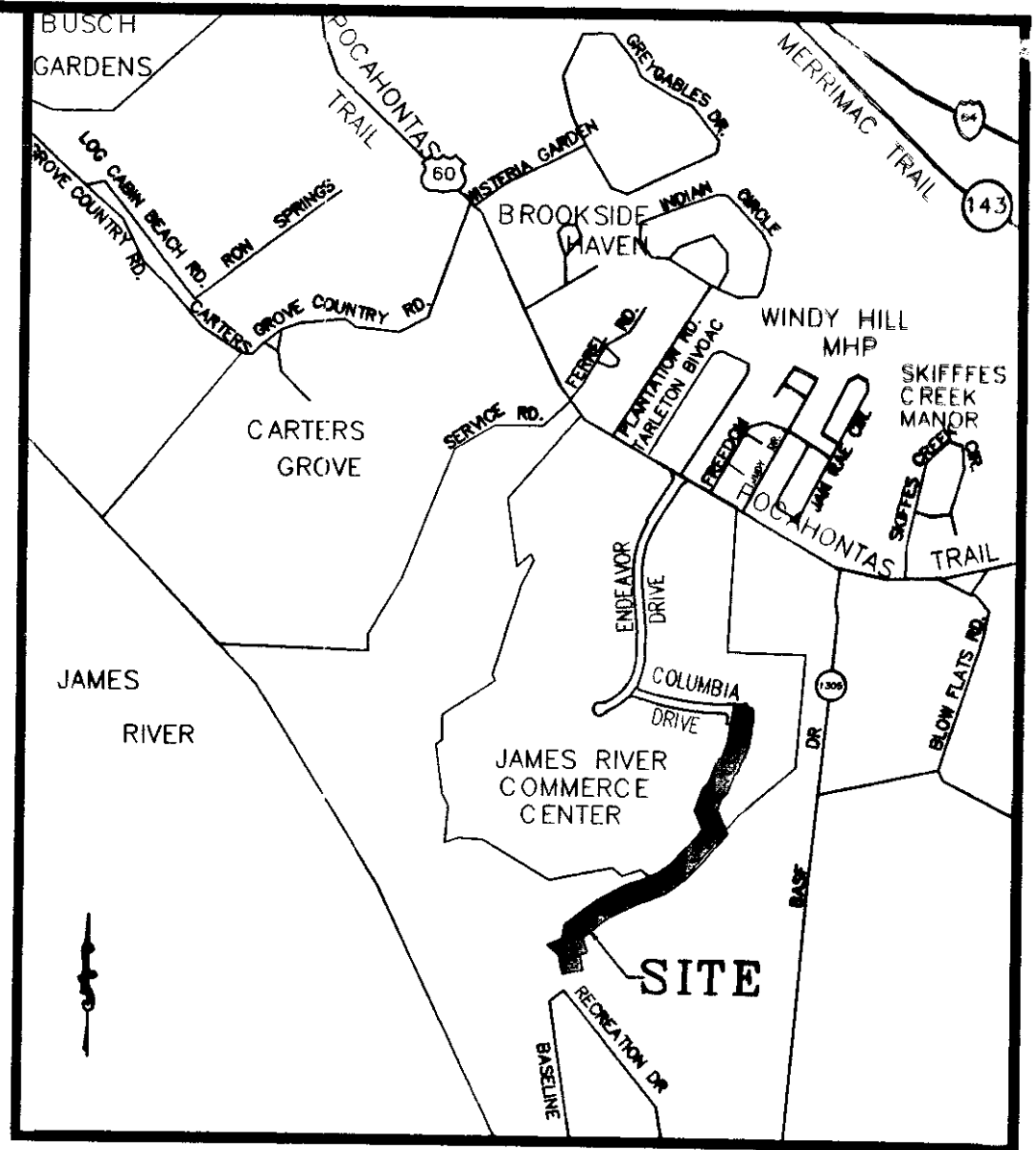
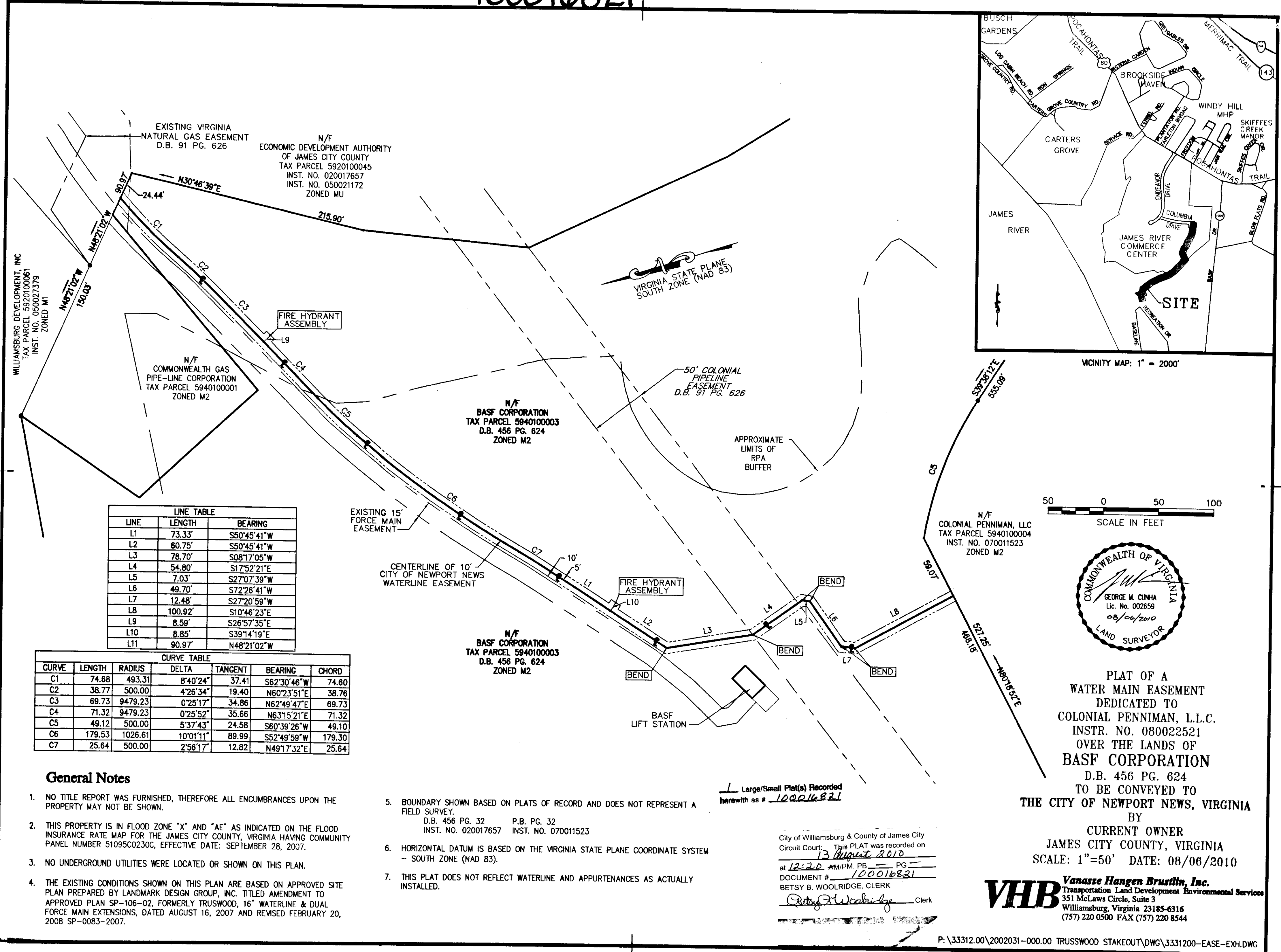


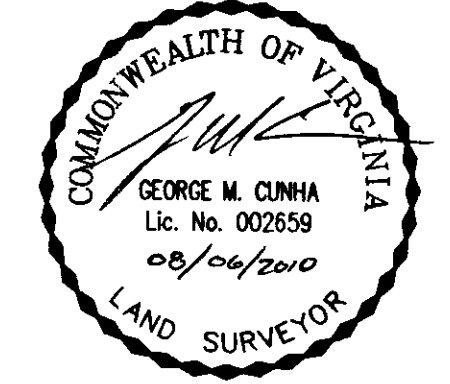
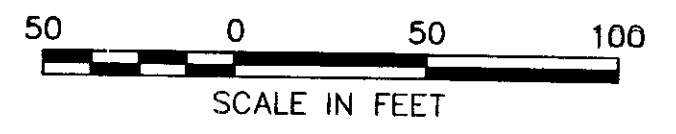
100016821



VICINITY MAP: 1" = 2000'

LINE	LENGTH	BEARING
L1	73.33'	S50°45'41"W
L2	60.75'	S50°45'41"W
L3	78.70'	S08°17'05"W
L4	54.80'	S17°52'21"E
L5	7.03'	S27°07'39"W
L6	49.70'	S72°26'41"W
L7	12.48'	S27°20'59"W
L8	100.92'	S10°46'23"E
L9	8.59'	S26°57'35"E
L10	8.85'	S39°14'19"E
L11	90.97'	N48°21'02"W

CURVE	LENGTH	RADIUS	DELTA	TANGENT	BEARING	CHORD
C1	74.68	493.31	8°40'24"	37.41	S62°30'46"W	74.60
C2	38.77	500.00	4°26'34"	19.40	N60°23'51"E	38.78
C3	69.73	9479.23	0°25'17"	34.86	N62°49'47"E	69.73
C4	71.32	9479.23	0°25'52"	35.66	N63°15'21"E	71.32
C5	49.12	500.00	5°37'43"	24.58	S60°39'26"W	49.10
C6	179.53	1026.61	10°01'11"	89.99	S52°49'59"W	179.30
C7	25.64	500.00	2°56'17"	12.82	N49°17'32"E	25.64



PLAT OF A
 WATER MAIN EASEMENT
 DEDICATED TO
 COLONIAL PENNIMAN, L.L.C.
 INSTR. NO. 080022521
 OVER THE LANDS OF
 BASF CORPORATION
 D.B. 456 PG. 624
 TO BE CONVEYED TO
 THE CITY OF NEWPORT NEWS, VIRGINIA
 BY
 CURRENT OWNER
 JAMES CITY COUNTY, VIRGINIA
 SCALE: 1"=50' DATE: 08/06/2010

VHB Vanasse Hangen Brustlin, Inc.
 Transportation Land Development Environmental Services
 351 McLaws Circle, Suite 3
 Williamsburg, Virginia 23185-6316
 (757) 220 0500 FAX (757) 220 8544

General Notes

- NO TITLE REPORT WAS FURNISHED, THEREFORE ALL ENCUMBRANCES UPON THE PROPERTY MAY NOT BE SHOWN.
- THIS PROPERTY IS IN FLOOD ZONE "X" AND "AE" AS INDICATED ON THE FLOOD INSURANCE RATE MAP FOR THE JAMES CITY COUNTY, VIRGINIA HAVING COMMUNITY PANEL NUMBER 51095C0230C, EFFECTIVE DATE: SEPTEMBER 28, 2007.
- NO UNDERGROUND UTILITIES WERE LOCATED OR SHOWN ON THIS PLAN.
- THE EXISTING CONDITIONS SHOWN ON THIS PLAN ARE BASED ON APPROVED SITE PLAN PREPARED BY LANDMARK DESIGN GROUP, INC. TITLED AMENDMENT TO APPROVED PLAN SP-106-02, FORMERLY TRUSWOOD, 16" WATERLINE & DUAL FORCE MAIN EXTENSIONS, DATED AUGUST 16, 2007 AND REVISED FEBRUARY 20, 2008 SP-0083-2007.
- BOUNDARY SHOWN BASED ON PLATS OF RECORD AND DOES NOT REPRESENT A FIELD SURVEY.
 D.B. 456 PG. 32 P.B. PG. 32
 INST. NO. 020017657 INST. NO. 070011523
- HORIZONTAL DATUM IS BASED ON THE VIRGINIA STATE PLANE COORDINATE SYSTEM - SOUTH ZONE (NAD 83).
- THIS PLAT DOES NOT REFLECT WATERLINE AND APPURTENANCES AS ACTUALLY INSTALLED.

Large/Small Plat(s) Recorded
 herewith as # 100016821

City of Williamsburg & County of James City
 Circuit Court: This PLAT was recorded on
 13 August 2010
 at 12:20 AM/PM, PG. 1
 DOCUMENT # 100016821
 BETSY B. WOOLRIDGE, CLERK
 Betsy B. Woolridge Clerk